

1/24th 4WD Electric Power R/C Car

Specifications:

STYLES	LENGTH	WIDTH	HEIGHT	WEIGHT	WHEEL BASE	DRIVE SYSTEM	GROUND CLEARANCE	DIAMETER OF WHEEL	WIDTH OF WHEEL	GEAR RATIO
Monster Truck	165mm	120mm	78mm	155g	110mm	4WD Shaft Drive	17mm	42mm	25mm	1:12.6
SCT	178mm	100mm	65mm	153g						
Sport Rally	175mm	100mm	70mm	158g						
Off-Road Buggy	165mm	100mm	70mm	149g						
Off-Road Truggy	167mm	105mm	70mm	150g						

Models:

- Please open box and check to avoid missing parts. Include a car, transmitter and manual in the box.
- Take out your car, radio and manual and take off car body.
- Please Check radio and receiver must be with same frequency, check inching switch must be in neutral position to avoid destroy servo.
- Check whether shocks leaking oil or not.
- Check receiver wireless is in good condition or not. Can not control steering and throttle.
- Take out manual from PE bag and put the antenna into the antenna pipe.
- Install 1.5v alkaline batteries for radio and for receiver, turn on the switch for radio and then receiver. Turn the steering wheel to check the steering direction, turn right, the car shall turn right, adjust ST reverse switch if the car is running opposite direction. The car shall be gone straight when the steering wheel back Neutral position, adjust ST trim if not. Pull throttle trigger and the car will go forward, and adjust TH reverse switch if not. Push throttle trigger and the car will stop and then backward, and adjust TH reverse switch if not. When the throttle trigger back neutral position, the car shall be at idle speed condition, adjust TH trim if not.
- Fill in nitro oil into the tank and break in the engine before drive you car.

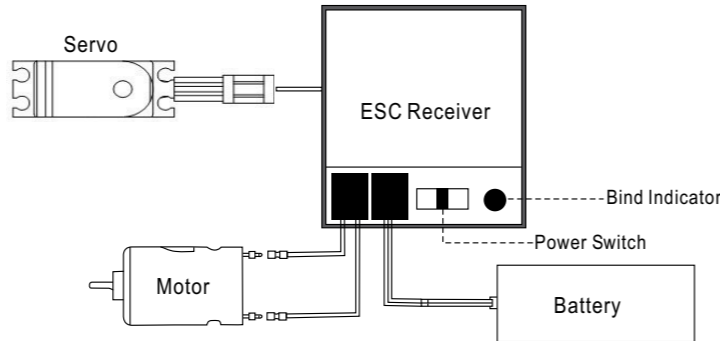
Warning Notes:

- Do not drive your model car when it is raining or thundering to keep safety.
- Keep your model car in dry normal temperature condition, and keep away from water.
- Please do not use other optional parts to install our model car if you can not make sure it can match your car or not. And please do not over load or use it to do breaking local law.
- To make sure nobody is using same frequency as yours to avoid that loose control your car or disturb other driver. Please follow up a experienced person when you drive your car as the beginner.
- Please keep away from Fire ad the model car come with plastic and electric material
- Can enlarge collecting area if pull out the receiver antenna, and will enlarge radio area if pull out radio antenna.
- Must turn on the switch of Radio, then turn on the switch of Receiver
- Must turn off the switch of Receiver, then turn off the switch of radio and take the connector out for the battery



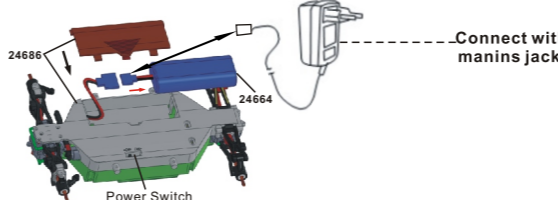
- This product is not a simple toy. It is an authentic R/C model.
- For better performance, some adjustment and correct assembly are necessary.
- Use the battery properly. Incorrect battery will damage your model and/or radio system.
- This product is strongly recommended for the user over 14 ages.

Scheme Of Installation:



Charge Battery:

- Connect charger plug with mains jack and then connect with connector of battery.
- Please be care of safety while charging, please remove charger plug from the mains jack once finish charging. Will be over heat if it is too long to be charging or incorrect charging way. must stop charging if over 45 degree for the battery temperature.
- Do not charge for battery at once when you take it away from your car. Please make sure battery in cool condition before recharge battery to keep battery performance running well and get a longer use life.



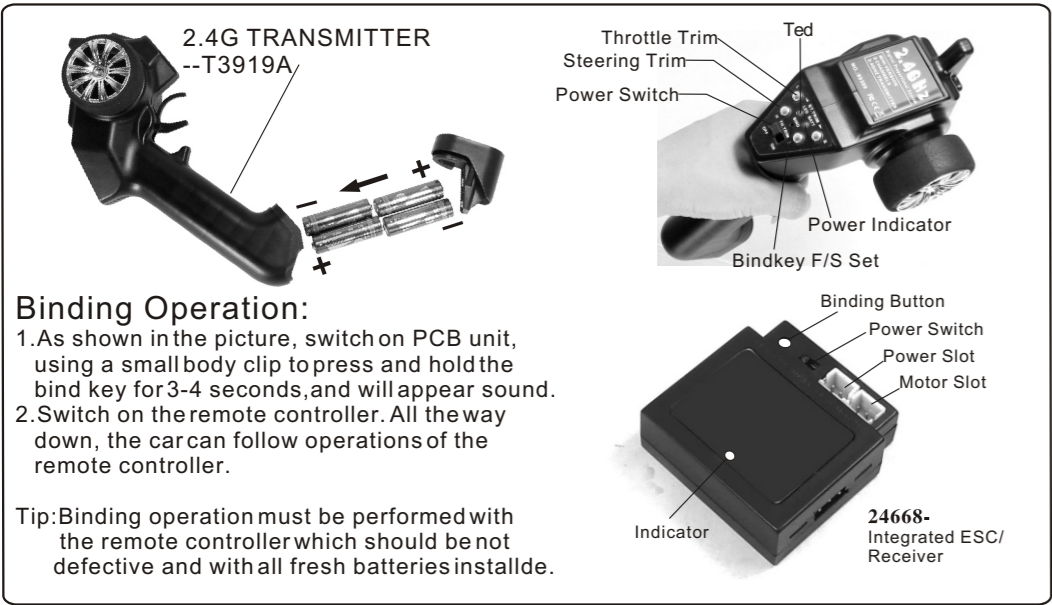
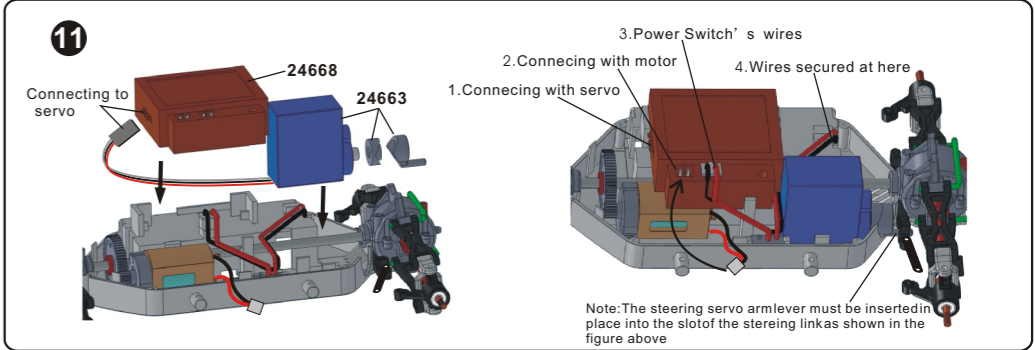
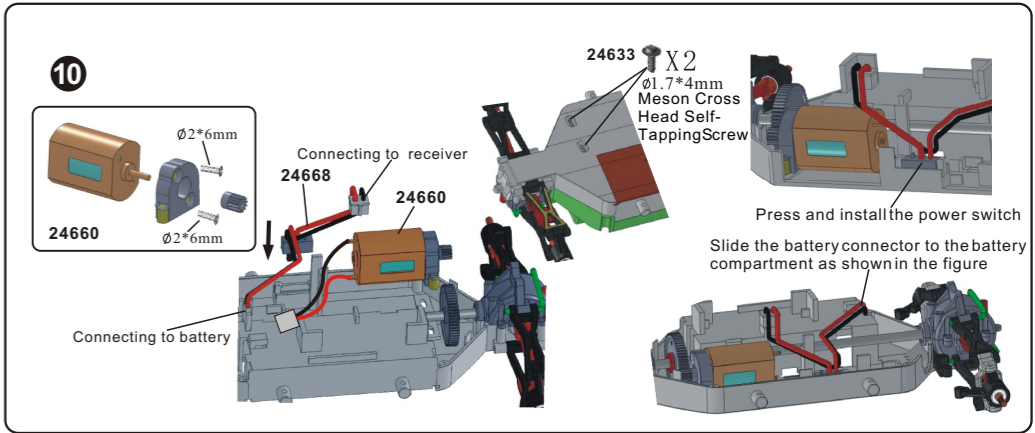
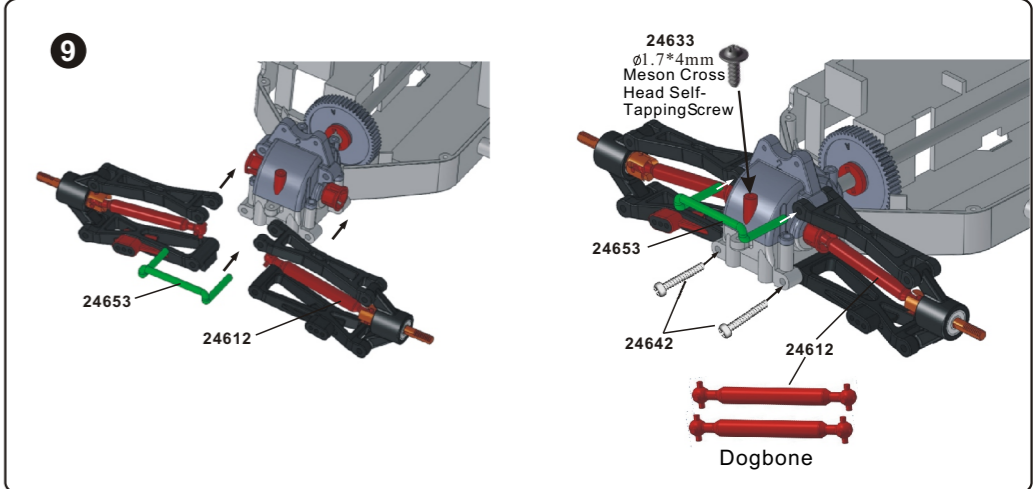
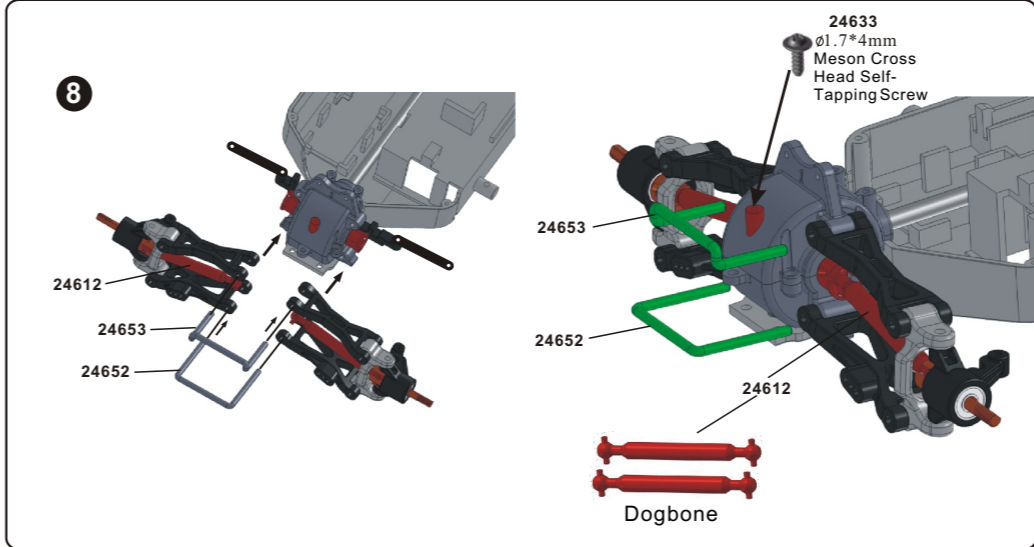
Maintenance after driving:

- Do not forget to turn off power and remove male plug and cut off power.
- Cleaning your car.
- Do not use Chemical cleanser to clean chassis to avoid electronic device getting damp and wire, weld and plastic part to be corrosive. Please use soft brush to cleaning you car.

Troubleshooting:

Please read the section if you have any fault trying to operate the vehicle.

Question	Reason	Solution
Car can not running	ESC getting over heat or getting slow	Cool down and try again.
No Performance	Power problem	Check wire loose or not
Motor over heat	Motor drive gear too tight	Cool the motor and adjust drive gear
No electric power	Battery without power or wire getting loose	Recharge and check wire
No driver power	Motor wire loose, Motor damaged Do not turn on switch for your radio while the motor is running.	Check motor wire connecting Change new motor, Check TH trim in neutral position or not
Out of control	Steering servo is not connect with ESC Steering servo is locked or no performance	Connect with ESC Check each part around the steering servo
Steering/Reverse	Pull throttle trigger the car go backward Steering wheel right but car going left or turns left and car going right.	Check TH trim/ST Rev switch.

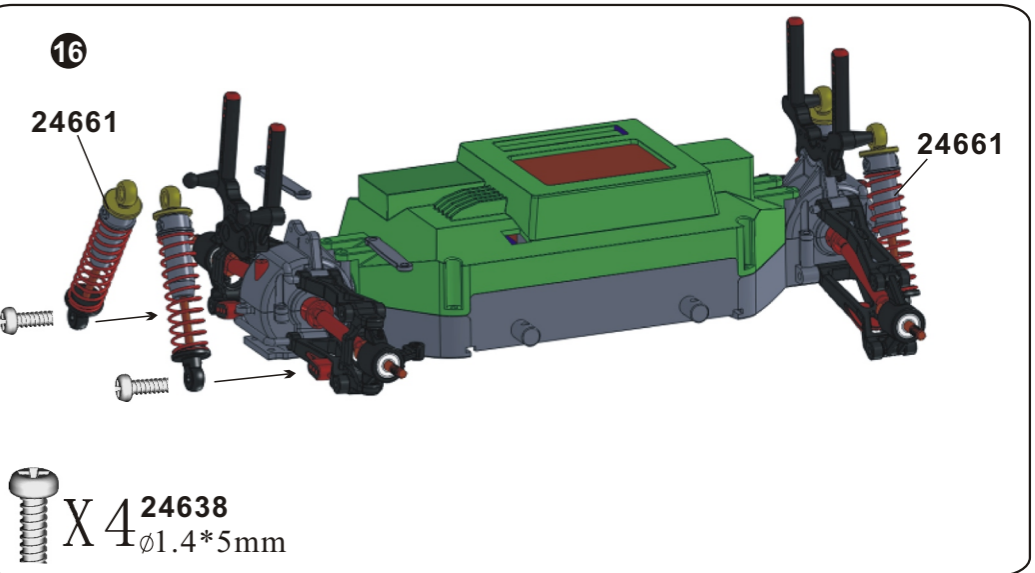
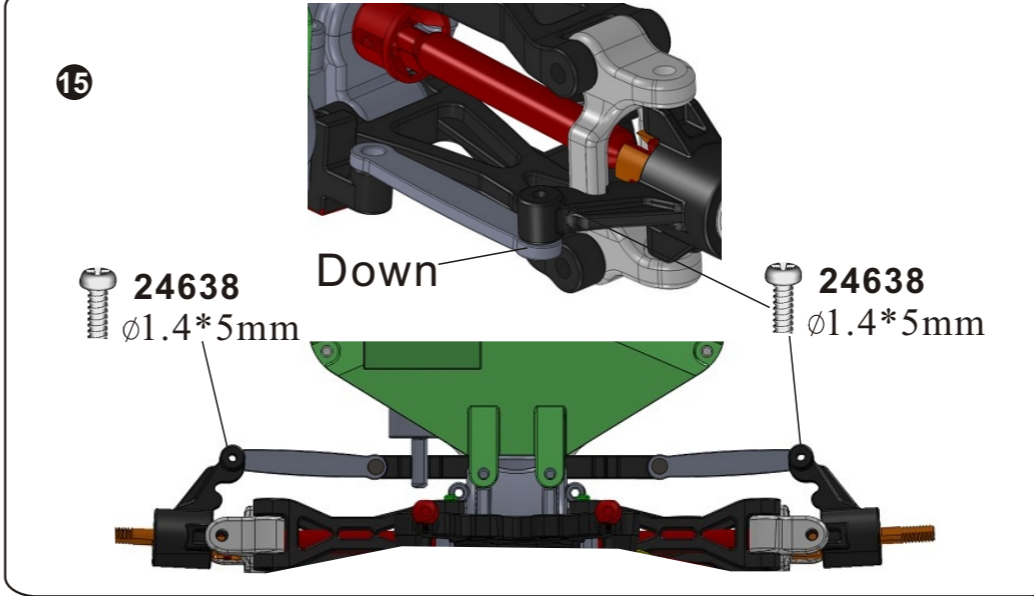
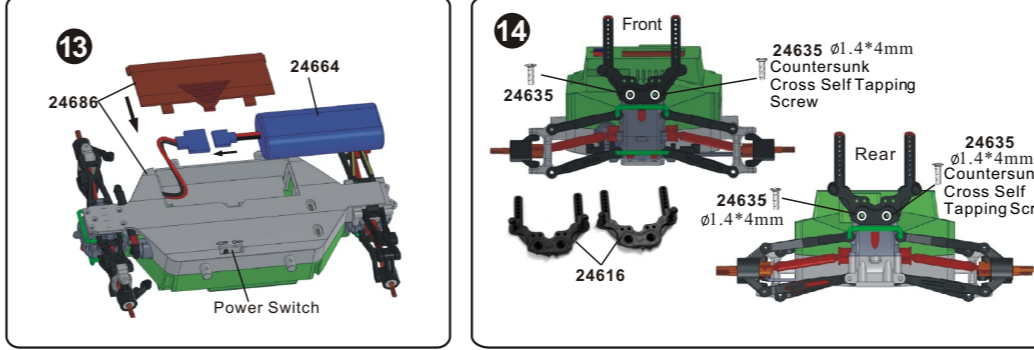
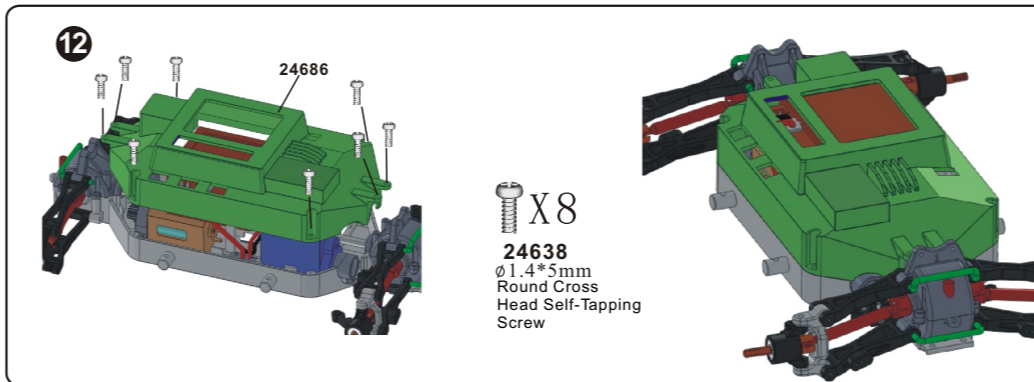
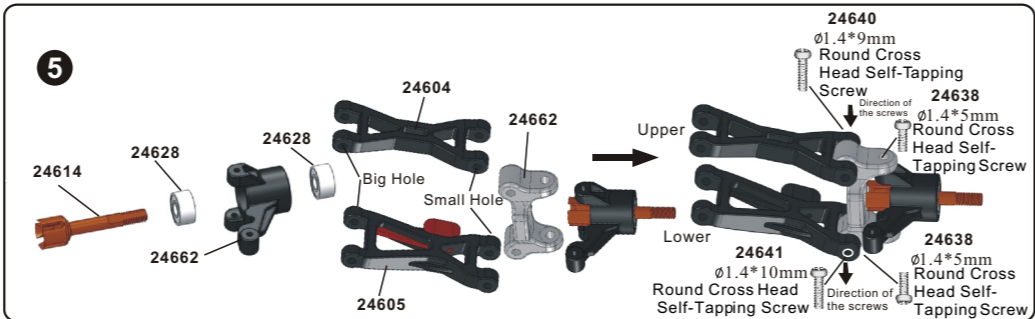
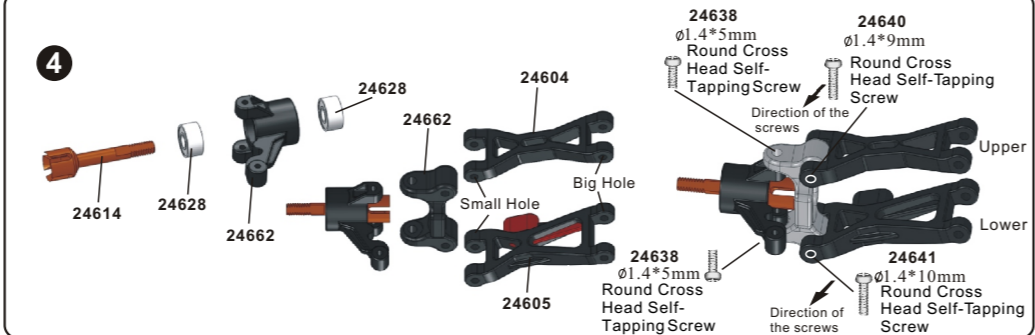
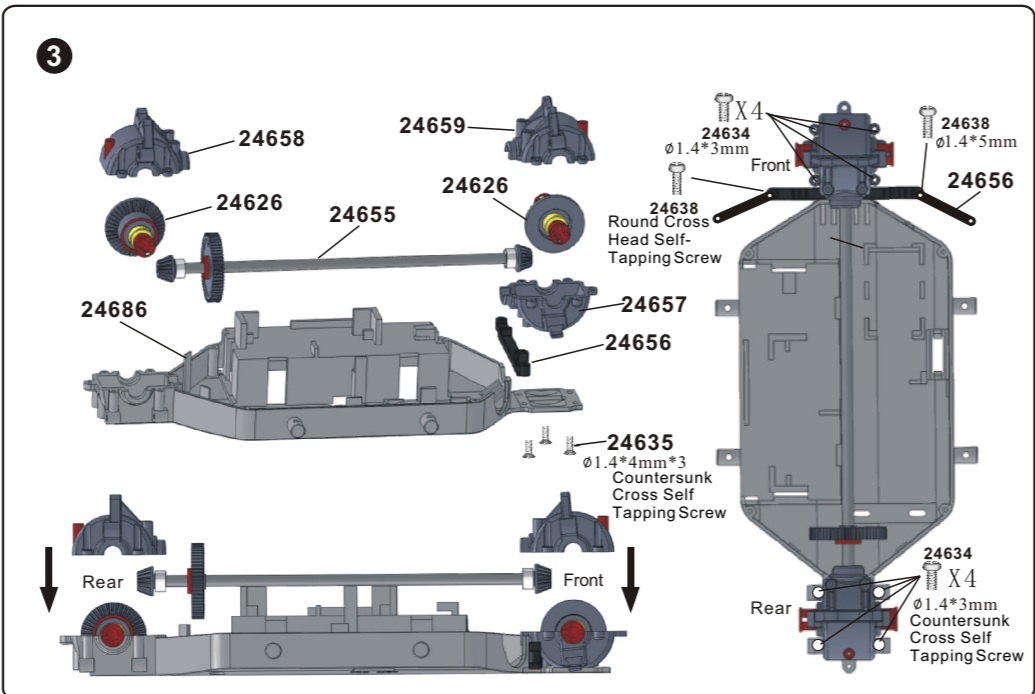
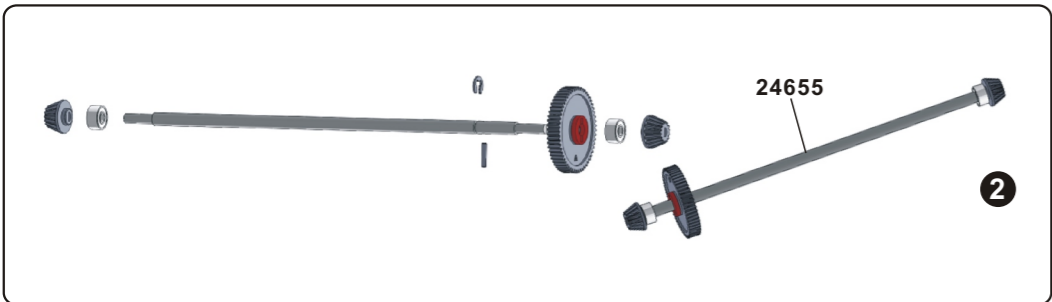
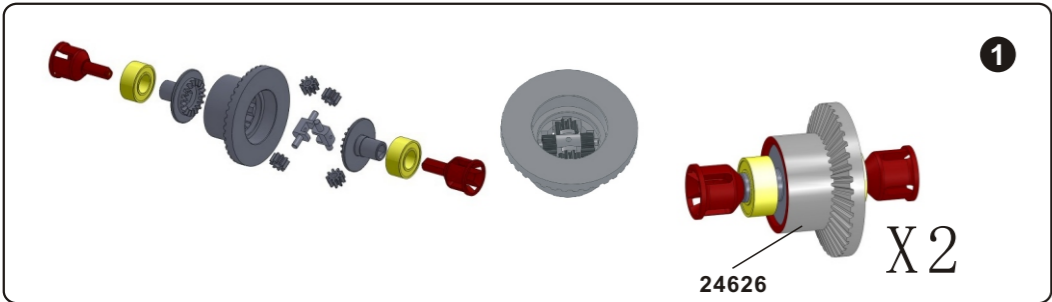


Binding Operation:

- As shown in the picture, switch on PCB unit, using a small body clip to press and hold the bind key for 3-4 seconds, and will appear sound.
- Switch on the remote controller. All the way down, the car can follow operations of the remote controller.

Tip: Binding operation must be performed with the remote controller which should be not defective and with all fresh batteries installed.





Assembling Steps:

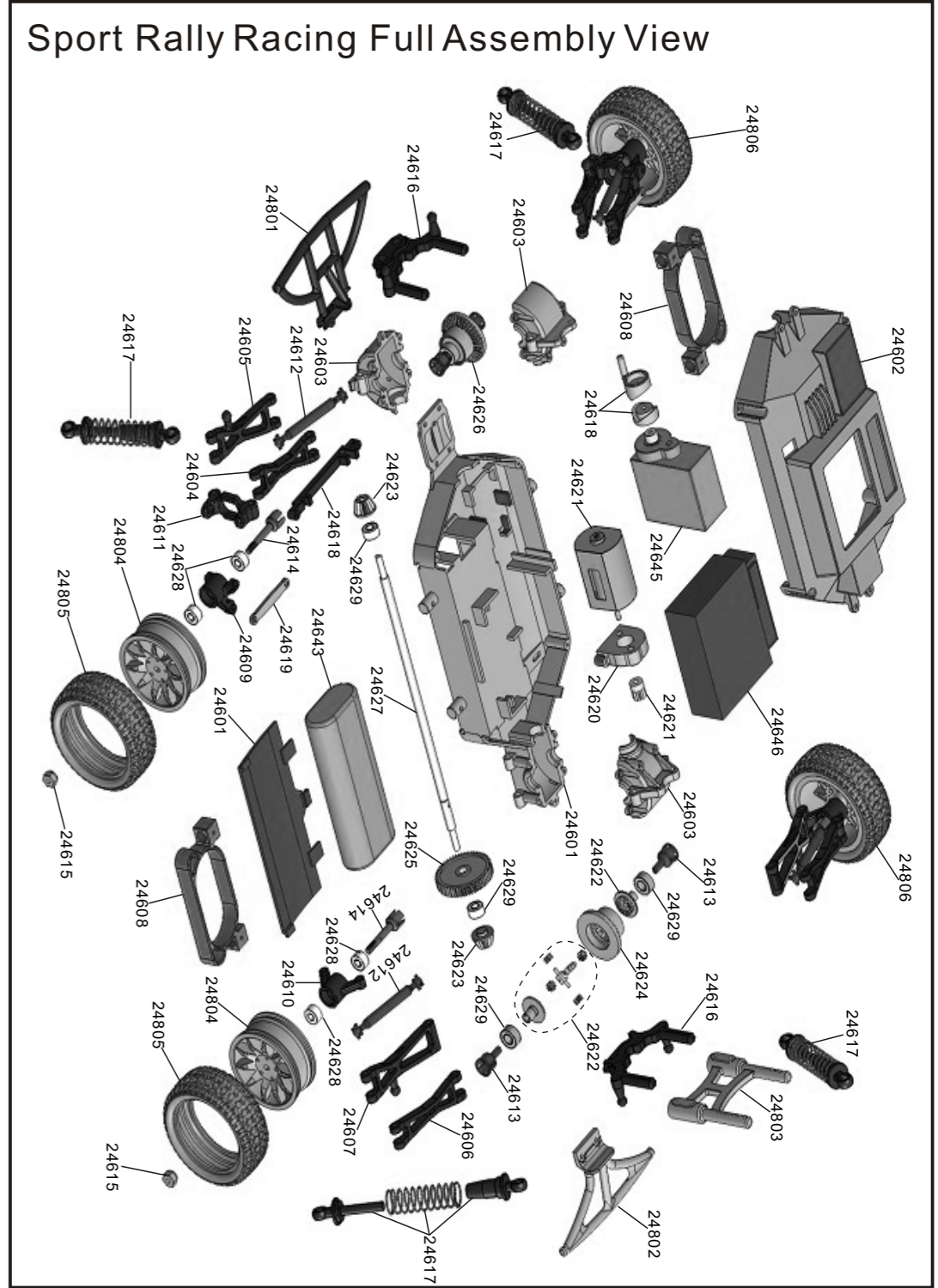
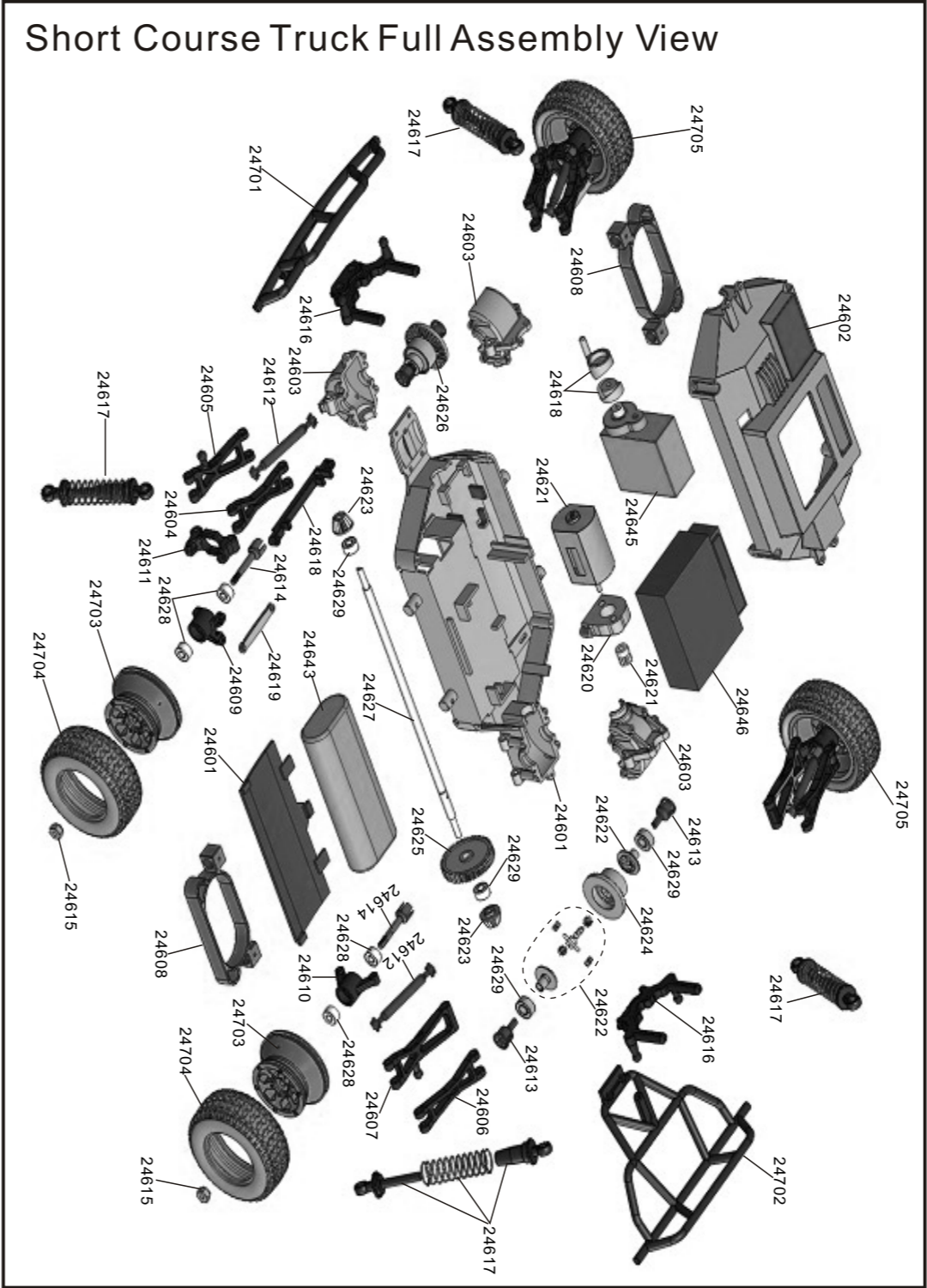


Spare Part

24601-Chassis+ Battery Case Lower Cover	24602-Chassis Upper Cover	24603-Gear Box (F/R)	24604-Front Upper Suspension Arm	24605-Front Lower Suspension Arm
24606-Rear Upper Suspension Arm	24607-Rear Lower Suspension Arm	24608-Side Guard	24609-Steering Hub	24610-Rear Upright
24611-Front Hub Carrier	24612-Dogbone	24617-Dogbone (Free Cutting Steel) (Optional)	24613-Joint Cup	24614-Wheel Axle
24615-Wheel Nut	24616-Shock Tower	24617-Shock Absorber	24618-Steering Set	24619-Steering Link

Spare Part				
24620-Motor Mount	24621-Motor+Gear (12T)	24622-Diff. Joint Cup Gear+Diff. Gear(9T)+Diff. Gear Shaft	24623-Diff.Gear(15T)	24624-Diff.Gear(39T)
24625-Drive Gear (58T)	24626-Diff. Gear Complete	24627-Drive Shaft	24628-Oil Bearing 5*2*2.5mm	24629-Oil Bearing 6*3*2.5mm
24630-R-Clipφ0.8mm	24631-E-Clipφ2.0mm	24632-Pin 1*4.5mm	24652-Front Lower Suspension Arm Pin 65M	24653-Front/Rear Upper Suspension Arm Pin 65M
24654-Switch Line	24633-Meson Cross Head Self-Tapping Screw 1.7*4mm 5P	24634-Countersunk Cross Self Tapping Screw 1.4*3mm 12P	24635-Countersunk Cross Self Tapping Screw 1.4*4mm 12P	24636-Countersunk Cross Machine Screw 2*6mm 6P
24637-Round Cross Head Self-Tapping Screw 1.4*3mm 12P	24638-Round Cross Head Self-Tapping Screw 1.4*5mm 12P	24639-Round Cross Head Self-Tapping Screw 1.4*8mm 12P	24640-Round Cross Head Self-Tapping Screw 1.4*9mm 12P	24641-Round Cross Head Self-Tapping Screw 1.4*10mm 12P
24642-Round Cross Head Self-Tapping Screw 1.4*16mm 6P	24643-Battery 4.8V 220Mah	24644-Charger	24645-Servo 1kg	24646-ESC+Receiver
T3919A-Transmitter (Optional)				

Monster Truck Spare Part					
24647-Front Bumper	24648-Rear Bumper	24649-Wheel Rim	24650-Tires+Insert Sponge	24651-Wheel Complete	
					
Short Course Truck Spare Part					
24701-Front Bumper	24702-Rear Bumper	24703-Wheel Rim	24704-Tires	24705-Wheel Complete	
					
Sport Rally Racing Spare Part					
24801-Front Bumper	24802-Rear Bumper	24803-Rear Body Post	24804-Wheel Rim	24805-Tires	24806-Wheel Complete
					
Off-Road Buggy Spare Part					
24501-Front Bumper	24502-Rear Bumper	24503-Wheel Rim	24504-Tires	24505-Wheel Complete	
					
24506-Wing	24507-Body Post				
					
Off-Road Truggy Spare Part					
24647-Front Bumper	24502-Rear Bumper	24301-Wheel Rim	24302-Tires	24303-Wheel Complete	
					
24506- Wing	24507-Body Post				
					



Upgradable Optionals				
246001-Gear Box (F/R)(AL.)	246002-Front Upper Suspension Arm(AL.)	246003-Front Lower Suspension Arm(AL.)	246004-Rear Upper Suspension Arm(AL.)	246005-Rear Lower Suspension Arm(AL.)
246006-Side Guard (AL.)	246007-Steering Hub (AL.)	246008-Rear Upright (AL.)	246009-Front Hub Carrier(AL.)	246010-Wheel Nut (AL.)
246011-(AL.)Shock Absorber	246012-Steering Set (AL.)	246013-Steering Link (AL.)	246014-Motor Mount (AL.)	246015-Front Bumper (AL.)
246016-Rear Bumper (AL.)	248001-Front Bumper (AL.)	248002-Rear Bumper (AL.)	246017-Dogbone (Free Cutting Steel)	246018-Joint Cup (Free Cutting Steel)
(Monster Truck Only)	(Sport Rally Only)	(Sport Rally Only)		
246019-Ball Bearing 5*2*2.5mm	246020-Ball Bearing 6*3*2.5mm			

