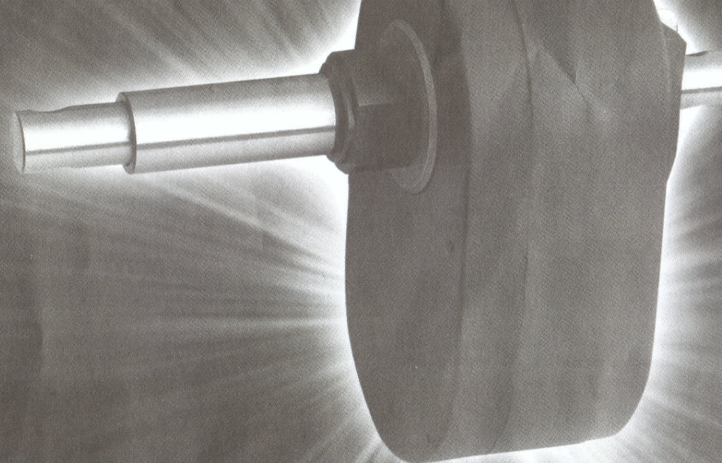


Please read these instructions thoroughly before assembling

MadBeast ***Reverse Module***

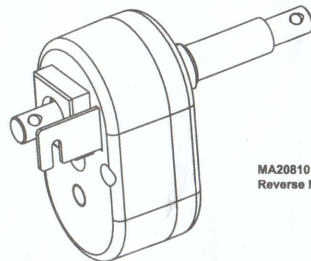
The reverse module provides reverse functionality for the Exceed-RC Madbeast Monster truck.



EXCEED-RC

Required For Operation

Included with kit



MA208101 X1
Reverse Module



MA2081A015 X1
Shift Rod



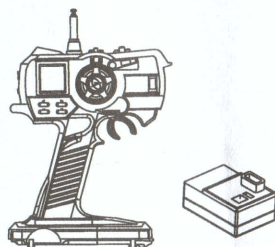
MA2081A009K1
Shift linkage Rod



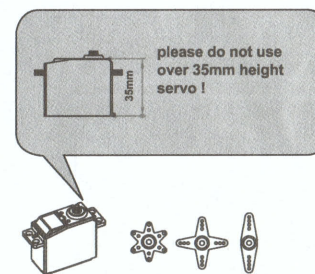
MA2081B01X1
Clutch Set

- BA1001B022 X3
Set Screw 3*3mm
- MA1001A022 X3
Alum. Stopper
- BA1001D013 X2
Silicone Tube
- MA2081A016 X2
Joint Cup Spacer
- MA2081B008 X1
Washer 8*13*1
- MA2081B009 X1
Washer 8*13*0.5
- MA2081B007X1
Washer 12*18*1
- BA1001B020 X1
Set Screw 4*4mm
- MA1001B004 X1
Spring for clutch
- MA1001A017 X1
Steel ball for clutch

Other equipment required

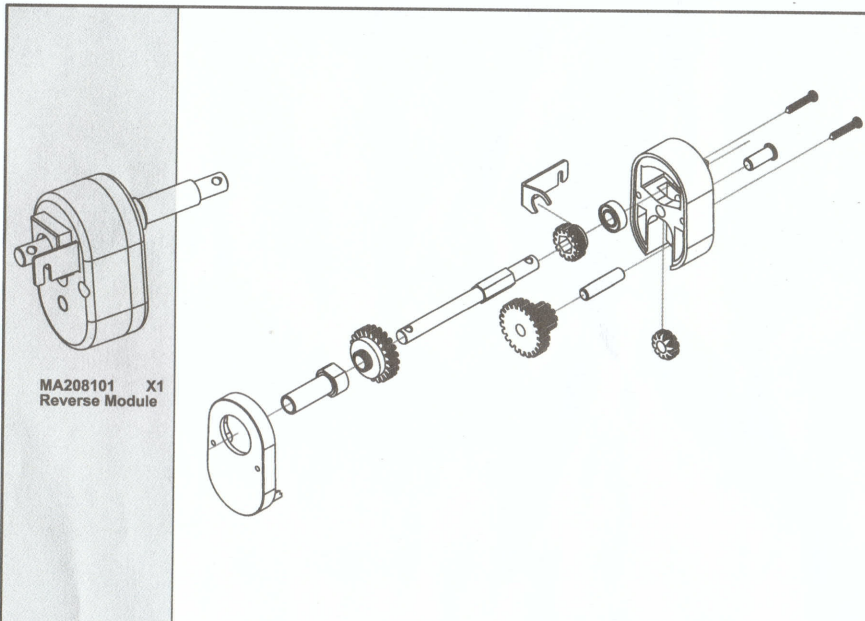


Three Channel Switching Type Radio System

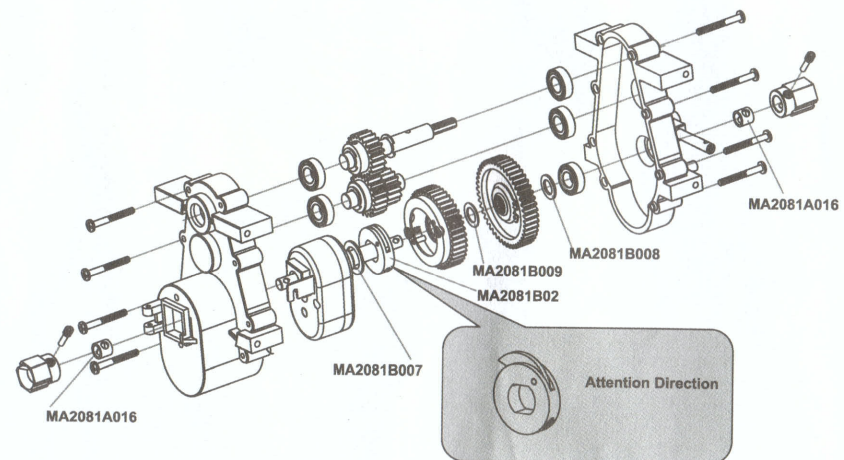


A Standard Servo With Servo Horn

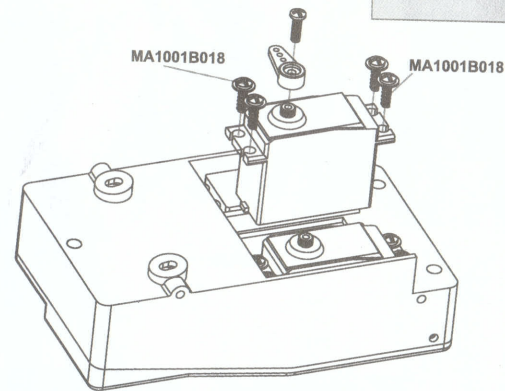
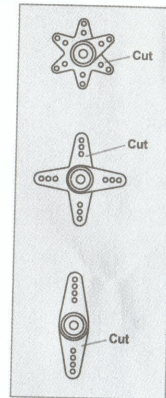
please do not use
over 35mm height
servo !



1 Attaching Reverse Module To The Gear Box

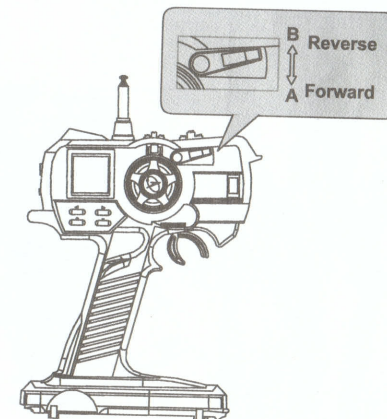
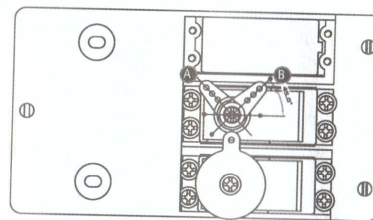


2 Attaching The Third Servo



MA1001B018 X4
3*10PBD Screw

3 Radio System Adjustment



4 Attaching Switch Linkages



MA2081A015 X1
Shift Rod



MA2081A009 X1
Shift linkage Rod



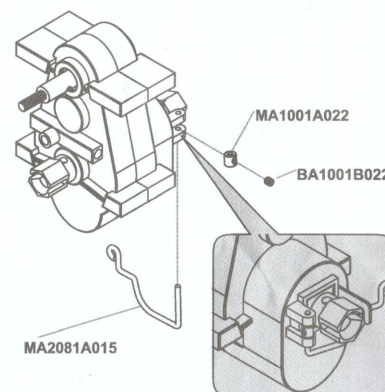
BA1001B022 X3
Set Screw 3*3mm



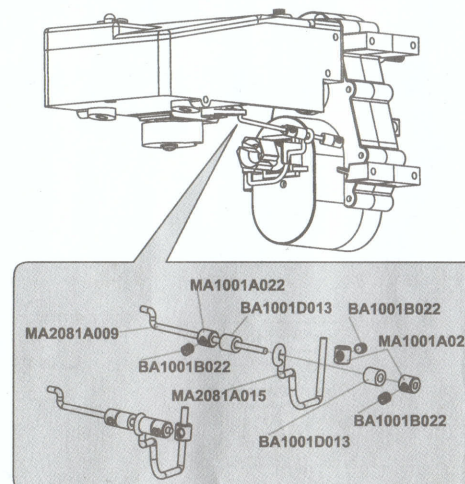
MA1001A022 X3
Alum. Stopper



BA1001D013 X2
Silicone Tube

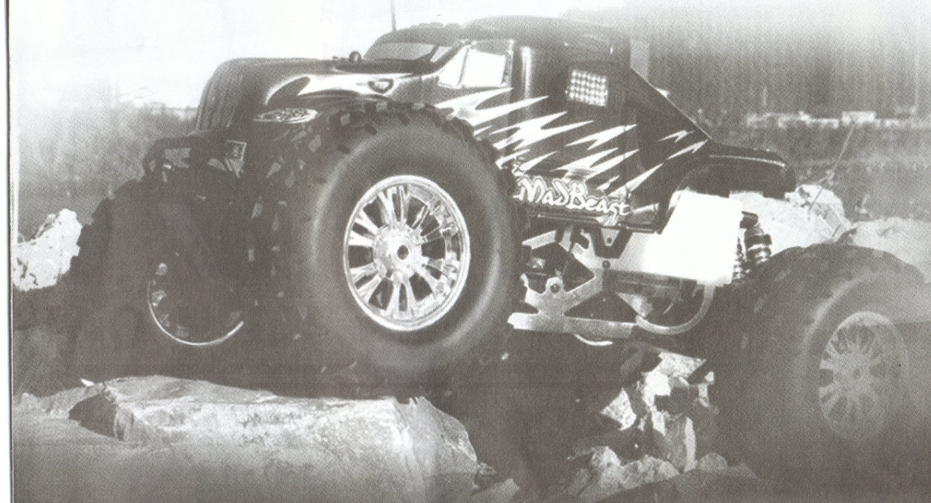


5 Attaching Linkages



Note: Make sure the Madbest is completely stopped when switching from Forward to Reverse or Reverse to Forward. Switching directions when the truck is moving will break the reverse module.

Please keep this OPERATING INSTRUCTION MANUAL for reference



EXCEED-RC