

Job Name:

Contact:

Ordering Code:

Fixture Type:



VIA Track System

VIA Track System



VIA Straight Track

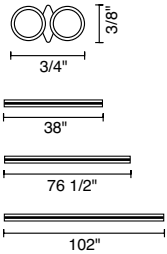
The VIA Track is a low-voltage copper tube track. The VIA Track consists of 2 copper pipes with galvanized surface finish in chrome or matte chrome. Center plastic insulations is dyed black or grey. Factory curved track available.

Technical Specs

- 300VA maximum thru-put
- 12V AC/DC rated
- Suitable for dry locations only

Ordering Code:

example: 160 - 032 - ch



| Part Number | VIA | Length | Finish |
|-------------|-----|-------------|-----------------|
| 160 | VIA | 031 38" | ch chrome |
| | | 032 76-1/2" | mc matte chrome |
| | | 033 102" | |



VIA Curved Track

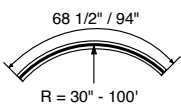
The VIA Curved Track is factory bent to specifications provided. Track may be curved horizontally or vertically into any radius from 2'6" to 100'. The VIA Curved Track consist of 2 copper pipes with galvanized surface finish in chrome, gold, or matte chrome. Center plastic insulations are black or grey.

Technical Specs

- 300VA maximum thru-put
- 12V AC/DC rated
- Suitable for dry locations only

Ordering Code:

example: 160 - 019-3 - ch



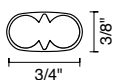
| Part Number | VIA | Length | Finish |
|-------------|-----|---------------------------|-----------------|
| 160 | VIA | 019-1 horizontal, 68-1/2" | ch chrome |
| | | 019-2 horizontal, 94" | mc matte chrome |
| | | 019-3 vertical, 68-1/2" | |
| | | 019-4 vertical, 94" | |



VIA End Cap

Ordering Code:

example: 160020 - mc



| Part Number | Finish |
|----------------|-----------------|
| 160020 end cap | bk black |
| | mc matte chrome |

Job Name:

Contact:

Ordering Code:

Fixture Type:



VIA System

VIA Connectors

Used to connect and redirect VIA Track

Technical Specs

- 300VA maximum
- 12V AC/DC rated
- Suitable for dry locations only

conductive and non conductive connectors for track sections



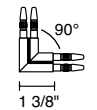
Ordering Code:

example: 160 - 409 - mc

| Part Number | Type | Finish |
|-------------|--------------------|------------------------|
| 160 | VIA | |
| 402* | internal connector | bk black |
| 409 | iso connector | mc matte chrome |

*402 does not offer any finish options

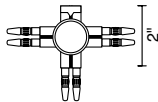
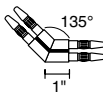
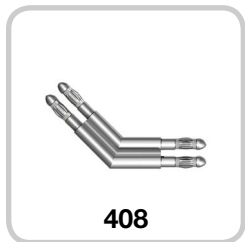
angled conductive connectors for redirecting track sections



Ordering Code:

example: 160 - 406 - ch

| Part Number | Type | Finish |
|-------------|---------------------------|------------------------|
| 160 | VIA | |
| 501 | flexible track connector | ch chrome |
| 406 | horizontal 90° connector | mc matte chrome |
| 408 | horizontal 135° connector | |
| 414 | horizontal T-connector | |



Job Name:

Contact:

Ordering Code:

Fixture Type:



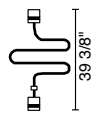
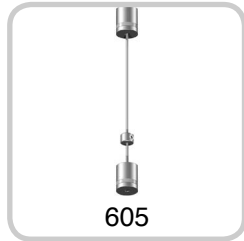
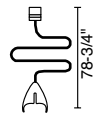
VIA System

VIA Mounting

Technical Specs

Used to mount VIA Track to wall or ceiling

cord suspension (all suspension supports can be field shortened)

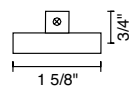


Ordering Code:

example: 160 - 600 - mc

| Part Number | Type | Finish |
|---------------------------|----------------------|------------------------|
| 160 VIA 600 | cord suspension clip | ch chrome |
| 605 | cord suspension 2 | mc matte chrome |

rigid supports



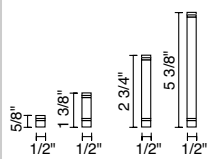
Ordering Code:

example: 160 - 518 - ch

| Part Number | Type | Finish |
|---------------------------|------------------------------------|------------------------|
| 160 VIA 518 | wall and ceiling attachment clip 1 | bk black |
| 519* | wall and ceiling attachment clip 2 | ch chrome |
| | | mc matte chrome |

*519 available in bk or mc only

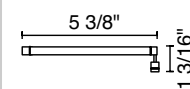
attachment clip accessories (must be used with 518 or 519 clips)
multiple spacers may be used and combined to lengthen the support



Ordering Code:

example: 160 - 530 - mc

| Part Number | Type | Finish |
|---------------------------|---------------------------|------------------------|
| 160 VIA 430 | 5/8" spacer | ch chrome |
| 530 | 1-3/8" spacer | mc matte chrome |
| 531 | 2-3/4" spacer | |
| 532 | 5-3/8" spacer | |
| 565 | 5/8" wall suspension I | |
| 566 | 5-3/8" wall suspension II | |
| 533 | plate disc | |



Job Name:

Contact:

Ordering Code:

Fixture Type:



VIA System

VIA Power Supply



VIA Plug-In Power Feed

includes track end cap (160020)

Technical Specs:

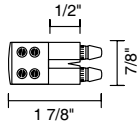
- 300VA maximum
- 12V AC/DC rated
- Suitable for dry locations only

Ordering Code:

example: 160401mc

Ordering Code

| | |
|-----------------|--------------|
| 160413bk | black |
| 160401mc | matte chrome |



VIA Mid-Span Power Feed

includes track end cap (160020)

Technical Specs:

- 300VA maximum
- 12V AC/DC rated
- Suitable for dry locations only

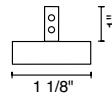
Ordering Code:

example: 160528 - ch

Part Number

Finish

| | | | |
|---------------|------------|-----------|--------------|
| 160528 | power feed | ch | chrome |
| | | mc | matte chrome |



VIA Canopy Power Feed

can be field shortened, includes set of track end caps (160020)

Technical Specs:

- 300VA maximum
- 12V AC/DC rated
- Suitable for dry locations only
- Mounts over 3" - 4" round J-box

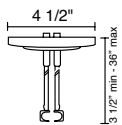
Ordering Code:

example: 160306 - ch

Part Number

Finish

| | | | |
|---------------|-------------|-----------|--------------|
| 160306 | canopy feed | ch | chrome |
| | | mc | matte chrome |



VIA Direct Feed

Technical Specs:

- | | |
|---|-----------------------------------|
| 60W | 105W |
| • 120VAC 50/60Hz input | • 120VAC 50/60Hz input |
| • 12VAC output | • 11.5VAC output |
| • Suitable for dry locations only | • Suitable for dry locations only |
| • Mount to 3-1/2" - 4" round recessed J-box | • Dimmable |
| • Dimmable ELV | |

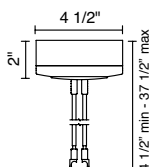
Ordering Code:

example: 160310 - mc

Part Number

Finish

| | | | |
|---------------|------------------|-----------|--------------|
| 160310 | 60W direct feed | mc | matte chrome |
| 160350 | 105W direct feed | | |



Job Name:

Contact:

Ordering Code:

Fixture Type:



VIA System

VIA Adapters



VIA Uni-Plug Adapter

Technical Specs

- 70 Watt maximum for halogen
- 70VA maximum for LED
- 12V AC/DC rated
- Suitable for dry locations only

Ordering Code:

example: 160050 - mc

| Part Number | | Finish | |
|---------------|---------|-----------|--------------|
| 160050 | adapter | ch | chrome |
| | | mc | matte chrome |



VIA 45° Uni-Plug Adapter

Technical Specs

- 70 Watt maximum for halogen
- 70VA maximum for LED
- 12V AC/DC rated
- Suitable for dry locations only
- Adjustable from 0° - 45°

Ordering Code:

example: 160051 - ch

| Part Number | | Finish | |
|---------------|-------------|-----------|--------------|
| 160051 | 45° adapter | ch | chrome |
| | | mc | matte chrome |

