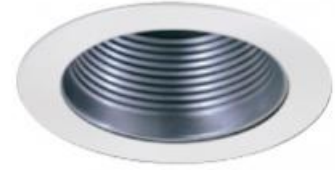


4" Phenolic Step Baffle Trim



Features

- Phenolic Step, Metal Ring.
- Lamp: 32W MAX CFL (PL-T) or 50W MAX PAR20 or R20.
- O.D.: 4 3/4".

Technical Details

Construction:

- Meticulously manufactured trim with a powder coated or anodized finish.
- Baffle helps reduce glare.

Installation: Clips securely mount trim into the housing and keeps ring flush with ceiling.

Compatible Housing: Compatible with 4" Line Voltage IC and Non-IC versions.

Lamp: Compatible with Medium base (E26) PAR type.

Options



All White



Black w/White Ring



All Copper



All Bronze



All Nickel



All Black



Black w/Nickel Ring



Nickel w/Black Ring



White w/Nickel Ring



Nickel w/White Ring



Black w/Bronze Ring



Bronze w/White Ring



White w/Bronze Ring

Product Number

Product Number Builder

Example: **EL993B**

4" Phenolic Baffle Metal Trim

Finish

EL993

- B** Black w/White Ring
- BZ** All Bronze
- CP** All Copper
- W** All White
- N** All Nickel
- BB** All Black
- BN** Black w/Nickel Ring
- NB** Nickel w/Black Ring
- WN** White w/Nickel Ring
- NW** Nickel w/White Ring
- BBZ** Black w/Bronze Ring
- BZW** Bronze w/White Ring
- WBZ** White w/Bronze Ring