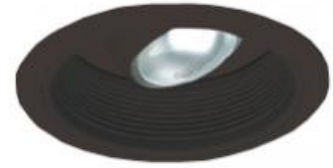


6" Regressed Baffle Trim with Regressed Eyeball



Features

- Adjustable Baffle.
- Lamp: 50W MAX PAR20.
- O.D.: 7 1/4".

Technical Details

Construction:

- Meticulously manufactured trim with a powder coated or anodized finish.
- Integral gimbal ring holds lamp and allows for 35° adjustability while keeping a flush look on the ceiling.
- Diecast trim ring for durability and lasting quality.
- Baffle helps reduce glare.

Installation: Clips securely mount trim into the housing and keeps ring flush with ceiling.

Compatible Housing: Compatible with 6" Integrated Line Voltage Housings.

Lamp: Compatible with Medium base (E26) PAR type.

Options



All White



All Black

Product Number

Item	Finish
EL508B	All Black

Product Number Builder Example: EL508B

6" Adjustable Baffle Trim	Finish
EL508	<input type="text"/> B All Black W All White