

# NIO-4SC

## 4" Iolite Square Adjustable Cone Reflector

Source: 14W to 28W LED  
800lm to 2500lm

Type

Project

Catalog No.

Notes

### PRODUCT DESCRIPTION

4" Iolite reflectors can be specified for use with Iolite new construction or remodel housings. Die-cast adjustable cone reflectors optimize visual cut-off and adjustable to aim the light source in desired direction.

### FEATURES

- 800lm, 1000lm, 1500lm, 2000lm or 2500lm LED packages
- 2700K, 3000K, 3500K, 4000K, 5000K @ 90+ CRI
- Comfort Dim (warm dimming) also available in 800lm only
- Flood optic, narrow flood and spot optics (included)
- 5-Year limited warranty

### SPECIFICATION

**Construction:** Reflectors are constructed of heat dissipating, die-cast aluminum. The aluminum die-cast LED heat sink is threaded to fit the reflector and transfer heat.

**Mounting:** Reflector includes friction blades to mount securely to housing.

### OPTICS

**800-1000lm:** Each reflector includes field changeable optics (25° spot, 38° narrow flood and 60° flood - preinstalled). Premium 15° and 25° TIR optics are also available.

**1500-2500lm:** Each reflector includes field changeable TIR optics (39° spot, 51° narrow flood - preinstalled and 71° flood).

### ELECTRICAL

**Lumens / Wattage:** 800lm / 14W, 1000lm / 14W, 1500lm / 20W, 2000lm / 24W, 2500lm / 28W

**Color Temperature:** 2700K, 3000K, 3500K, 4000K, 5000K

**CRI:** 90+ CRI

**Operating Temp.:** Specified by housing

**Lifetime:** 50,000 hours @ L70

**Comfort Dim:** Comfort Dim color tunes the temperature from a bright 3100K, to a romantic and comfortable 2000K on a gradual, even curve. Available in 800lm only.

**Dimming:** Specified by housing

### COMPATIBLE HOUSINGS

Reflectors are compatible with respective Iolite housings manufactured by Nora Lighting.

| CATALOG NO.   | DESCRIPTION           | LUMENS / WATTAGE |
|---------------|-----------------------|------------------|
| NHIOICD-48    | ICAT New Construction | 800-1000lm / 14W |
| NHIOICDCP-48  | Chicago Plenum        | 800-1000lm / 14W |
| NHRIIC-48     | ICAT Remodel          | 800-1000lm / 14W |
| NHIOICD-415   | ICAT New Construction | 1500lm / 20W     |
| NHIOICDCP-415 | Chicago Plenum        | 1500lm / 20W     |
| NHIOICD-420   | ICAT New Construction | 2000lm / 24W     |
| NHIOICDCP-420 | Chicago Plenum        | 2000lm / 24W     |
| NHIOICD-425   | ICAT New Construction | 2500lm / 28W     |
| NHIOICDCP-425 | Chicago Plenum        | 2500lm / 28W     |

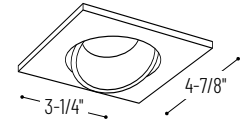
**Accessories:** Reflectors will accommodate (1) hex louver and (1) translucent deco collar or opaque snoot, no accessory holder is required, see accessories page. Flush mount mud ring is available to give the appearance of a trimless reflector, compatible with new construction housings only.

### LABELS AND LISTINGS

- cULus Listed for Damp Locations
- ENERGY STAR certified
- [5-Year Limited Warranty](#)
- RoHS Compliant
- Certified to the high efficacy requirements of California Title 24 JA8-2019



### PRODUCT IMAGES & DIMENSIONS



#### NIO-4SC

Square Adjustable Cone Regressed Reflector

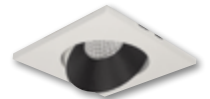
Adjustability:

New Construction: 45° (800-1000lm) / 35° (1500-2500lm)

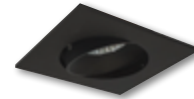
Remodel: 45° (800-1000lm)



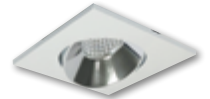
**BB**  
Black Reflector  
Black Flange



**BW**  
Black Reflector  
White Flange



**BZ**  
Bronze Reflector  
Bronze Flange



**CMPW**  
Specular Clear Reflector  
Matte Powder White Flange



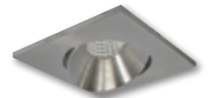
**HW**  
Haze Reflector  
White Flange



**HZMPW**  
Haze Reflector  
Matte Powder White Flange



**MPW**  
Matte Powder White Reflector  
Matte Powder White Flange



**NN**  
Natural Metal Reflector  
Natural Metal Flange



**WW**  
White Reflector  
White Flange

### 4" Iolite Square Adjustable Cone Reflector - Dedicated Housing Required

| Reflector Type                   | Color Temp.               | Finish  | Lumens / Wattage                         |
|----------------------------------|---------------------------|---|--|
| NIO-4SC = Square Adjustable Cone | <b>50X</b> = 5000K*       | <b>BB</b> = Black / Black                         | (blank) = 800lm / 14W                    |
|                                  | <b>CDX</b> = Comfort Dim† | <b>BW</b> = Black / White                         |  |
|                                  | <b>27X</b> = 2700K        | <b>BZ</b> = Bronze / Bronze                       | /10 = 1000lm / 14W                       |
|                                  | <b>30X</b> = 3000K        | <b>CMPW</b> = Specular Clear / Matte Powder White |  |
|                                  | <b>35X</b> = 3500K        | <b>HW</b> = Haze / White                          | /HL = 1500-2500lm<br>(varies by housing) |
|                                  | <b>40X</b> = 4000K        | <b>HZMPW</b> = Haze / Matte Powder White          |  |
|                                  | <b>50X</b> = 5000K        | <b>MPW</b> = Matte Powder White                   |  |
|                                  |                           | <b>NN</b> = Natural Metal / Natural Metal         |  |
|                                  |                           | <b>WW</b> = White / White                         |  |

\* 5000K LED modules in 800lm are while supplies last

† Comfort Dim available in 800lm only and 1" Iolite uses a different dimming curve than 2" & 4" Iolite

### Compatible Housings

| Housing Type   |
|--|
| <b>NHIOICD-48</b> = ICAT New Construction / 800-1000lm / 14W |
| <b>NHIOICDCP-48</b> = Chicago Plenum / 800-1000lm / 14W      |
| <b>NHRIIC-48</b> = ICAT Remodel / 800-1000lm / 14W           |
| <b>NHIOICD-415</b> = ICAT New Construction / 1500lm / 20W    |
| <b>NHIOICDCP-415</b> = Chicago Plenum / 1500lm / 20W         |
| <b>NHIOICD-420</b> = ICAT New Construction / 2000lm / 24W    |
| <b>NHIOICDCP-420</b> = Chicago Plenum / 2000lm / 24W         |
| <b>NHIOICD-425</b> = ICAT New Construction / 2500lm / 28W    |
| <b>NHIOICDCP-425</b> = Chicago Plenum / 2500lm / 28W         |

Example: **NIO-4SC50XWW** = 4" Iolite Square Adjustable Cone Regress Reflector, 5000K, White finish, 800lm / 14W

# 4" Iolite Accessories

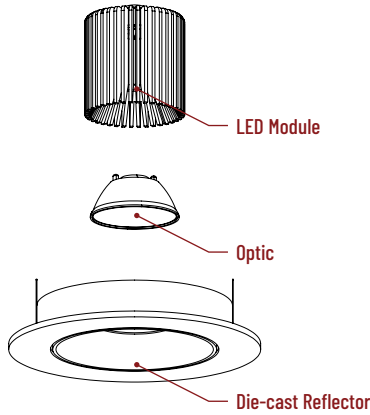
## 4" Iolite Square Adjustable Cone Reflector

|             |
|-------------|
| Type        |
| Project     |
| Catalog No. |
| Notes       |

### FIELD CHANGEABLE OPTICS

Iolite reflectors include spot, narrow flood and flood optics. Optics can be changed in the field by removing LED module from die-cast reflector. Replacement optics include an optional frosted lens.

**Note:** Frosted filter-optics and Premium TIR optics are not compatible with /HL LED modules.



Frosted Filter-Optic

|              |           |
|--------------|-----------|
| NIO-REFL15FR | 15° Optic |
| NIO-REFL25FR | 25° Optic |
| NIO-REFL38FR | 38° Optic |
| NIO-REFL60FR | 60° Optic |

Optic assembly includes optional frosted lens. 25°, 38° and 60° optics are included with 800lm and 1000lm reflector.  
**Not compatible with /HL LED module.**



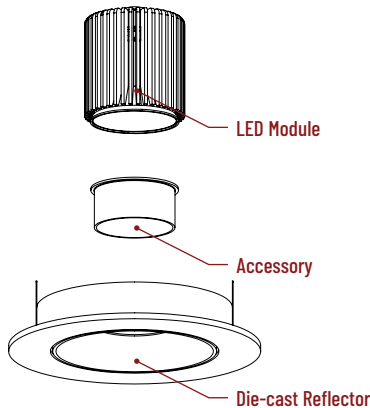
Premium TIR Optics

|               |           |
|---------------|-----------|
| NIO-REFLTIR15 | 15° Optic |
| NIO-REFLTIR25 | 25° Optic |

**Not compatible with /HL LED module or Comfort Dim (CDX) technology**

### ACCESSORIES

Iolite accessories can be added at any point in the design process. Accessories easily install between LED module and die-cast reflector. Luminaire will accommodate (1) hex louver and (1) collar accessory, no accessory holder required.



Translucent Decorative Collar

|   |             |
|---|-------------|
| NIO-AS14(color)                               | 5/8" length |
| NIO-AS19(color)                               | 3/4" length |
| NIO-AS26(color)                               | 1" length   |
| <b>Color:</b>                                 |             |
| AM (amber), BLU (blue), FR (frosted), R (red) |             |

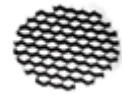
Translucent collars color the aperture with the specified color while producing white general light. Collars are available in different lengths. Use to add interest, create a theme, match a theme or define a space.



Opaque Collar Snoot

|   |             |
|---|-------------|
| NIO-AS14(color)                                   | 5/8" length |
| NIO-AS19(color)                                   | 3/4" length |
| NIO-AS26(color)                                   | 1" length   |
| <b>Color:</b>                                     |             |
| BLK (black), MPW (matte powder white), WH (white) |             |

Opaque snoot greatly reduces aperture brightness while preserving light output. (Note: Black snoot will reduce light)



Hex Cell Louver

|        |       |
|--------|-------|
| NIO-HC | Black |
|--------|-------|

Hex cell louver subtly reduces aperture brightness by reducing light output by about 20%.

### FLUSH MOUNT

4" Iolite reflectors can be installed flush with the drywall for a flush mount appearance. A flush mount mud ring is installed after the drywall and a professional drywall finisher floats the ceiling to blend in the mud ring.

Flush Mount Mud Ring

|             |                 |
|-------------|-----------------|
| NIO-FMMR-4S | Square Mud Ring |
|-------------|-----------------|

Mounts reflector flush to ceiling with flange visible. Mud ring attaches to drywall. **Only for use with NHIOICD-48 or NHIOICDCP-48 new construction housings and NIO-4S reflectors.** Dimensions: 7-7/8" diameter 1/2" thick



# PHOTOMETRICS

## 4" Iolite Square Adjustable Cone Reflector 800 lumens

Type

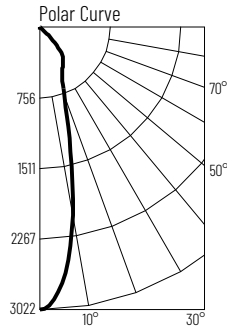
Project

Catalog No.

Notes

### Test Information

Test Number: NTR1338  
Part Number: N10-4SC40XWW  
Beam Spread: 26° Spot  
Lumens: 1294lm  
Wattage: 13.96W  
Efficacy: 93pw  
CCT / CRI: 4000K / 90 CRI  
Spacing Criteria (0°-180): 0.44  
Spacing Criteria (90°-270): 0.46



### Illuminance at a Distance

| Distance from Luminaire | FC at Nadir | Beam Diameter |
|-------------------------|-------------|---------------|
| 4'                      | 187fc       | 1'-10"        |
| 6'                      | 83.3fc      | 2'-10"        |
| 8'                      | 46.9fc      | 3'-8"         |
| 10'                     | 30fc        | 4'-7"         |
| 12'                     | 20.8fc      | 5'-6"         |

### Zonal Lumen Summary

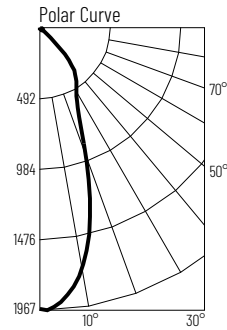
| Zone   | Lumens | % Luminaire |
|--------|--------|-------------|
| 0-30   | 844    | 65.2        |
| 0-40   | 1111   | 85.9        |
| 0-60   | 1281   | 99          |
| 0-90   | 1292   | 99.9        |
| 90-180 | 2      | 0.1         |
| 0-180  | 1294   | 100         |

### Candela Table

| Vertical Angles | Candela |
|-----------------|---------|
| 0               | 3000    |
| 5               | 2700    |
| 15              | 1193    |
| 25              | 556     |
| 35              | 426     |
| 45              | 194     |

### Test Information

Test Number: NTR1339  
Part Number: N10-4SC40XWW  
Beam Spread: 39° Narrow Flood  
Lumens: 1329lm  
Wattage: 13.98W  
Efficacy: 95pw  
CCT / CRI: 4000K / 90 CRI  
Spacing Criteria (0°-180): 0.64  
Spacing Criteria (90°-270): 0.66



### Illuminance at a Distance

| Distance from Luminaire | FC at Nadir | Beam Diameter |
|-------------------------|-------------|---------------|
| 4'                      | 123fc       | 2'-10"        |
| 6'                      | 54.7fc      | 4'-2"         |
| 8'                      | 30.7fc      | 5'-7"         |
| 10'                     | 19.7fc      | 7'            |
| 12'                     | 13.7fc      | 8'-5"         |

### Zonal Lumen Summary

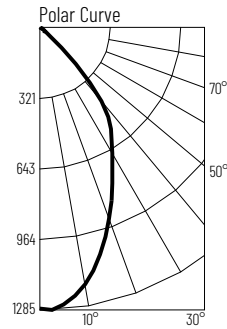
| Zone   | Lumens | % Luminaire |
|--------|--------|-------------|
| 0-30   | 848    | 63.9        |
| 0-40   | 1125   | 84.6        |
| 0-60   | 1304   | 98.2        |
| 0-90   | 1323   | 99.6        |
| 90-180 | 6      | 0.4         |
| 0-180  | 1329   | 100         |

### Candela Table

| Vertical Angles | Candela |
|-----------------|---------|
| 0               | 1967    |
| 5               | 1876    |
| 15              | 1342    |
| 25              | 637     |
| 35              | 441     |
| 45              | 195     |

### Test Information

Test Number: NTR1340  
Part Number: N10-4SC40XWW  
Beam Spread: 61° Flood  
Lumens: 1348lm  
Wattage: 14.07W  
Efficacy: 96pw  
CCT / CRI: 4000K / 90 CRI  
Spacing Criteria (0°-180): 0.86  
Spacing Criteria (90°-270): 0.88



### Illuminance at a Distance

| Distance from Luminaire | FC at Nadir | Beam Diameter |
|-------------------------|-------------|---------------|
| 4'                      | 79.8fc      | 4'-8"         |
| 6'                      | 35.5fc      | 7'            |
| 8'                      | 19.9fc      | 9'-5"         |
| 10'                     | 12.8fc      | 11'-8"        |
| 12'                     | 8.9fc       | 14'           |

### Zonal Lumen Summary

| Zone   | Lumens | % Luminaire |
|--------|--------|-------------|
| 0-30   | 768    | 57          |
| 0-40   | 1081   | 80.2        |
| 0-60   | 1319   | 97.9        |
| 0-90   | 1343   | 99.6        |
| 90-180 | 6      | 0.4         |
| 0-180  | 1348   | 100         |

### Candela Table

| Vertical Angles | Candela |
|-----------------|---------|
| 0               | 1276    |
| 5               | 1244    |
| 15              | 1050    |
| 25              | 768     |
| 35              | 553     |
| 45              | 222     |

### Lumen Output Multipliers

Color Temperature: 2700K (0.83), 3000K (0.86), 3500K (0.89), 4000K (1.00), 5000K (1.01)

# PHOTOMETRICS

## 4" Iolite Square Adjustable Cone Reflector 1000 lumens

Type

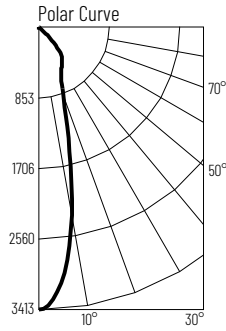
Project

Catalog No.

Notes

### Test Information

Test Number: NTR1368  
Part Number: NI0-4SC40XWW/10  
Beam Spread: 26° Spot  
Lumens: 1484lm  
Wattage: 13.41W  
Efficacy: 111pw  
CCT / CRI: 4000K / 90 CRI  
Spacing Criteria (0°-180): 0.46  
Spacing Criteria (90°-270): 0.46



### Illuminance at a Distance

| Distance from Luminaire | FC at Nadir | Beam Diameter |
|-------------------------|-------------|---------------|
| 4'                      | 213fc       | 1'-11"        |
| 6'                      | 94.8fc      | 2'-10"        |
| 8'                      | 53.3fc      | 3'-8"         |
| 10'                     | 34.1fc      | 4'-8"         |
| 12'                     | 23.7fc      | 5'-7"         |

### Zonal Lumen Summary

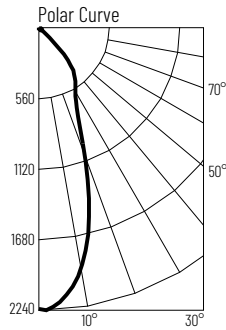
| Zone   | Lumens | % Luminaire |
|--------|--------|-------------|
| 0-30   | 968    | 65.2        |
| 0-40   | 1274   | 85.9        |
| 0-60   | 1471   | 99.1        |
| 0-90   | 1482   | 99.9        |
| 90-180 | 2      | 0.1         |
| 0-180  | 1484   | 100         |

### Candela Table

| Vertical Angles | Candela |
|-----------------|---------|
| 0               | 3413    |
| 5               | 3107    |
| 15              | 1389    |
| 25              | 648     |
| 35              | 495     |
| 45              | 222     |

### Test Information

Test Number: NTR1369  
Part Number: NI0-4SC40XWW/10  
Beam Spread: 38° Narrow Flood  
Lumens: 1482lm  
Wattage: 13.5W  
Efficacy: 110pw  
CCT / CRI: 4000K / 90 CRI  
Spacing Criteria (0°-180): 0.64  
Spacing Criteria (90°-270): 0.66



### Illuminance at a Distance

| Distance from Luminaire | FC at Nadir | Beam Diameter |
|-------------------------|-------------|---------------|
| 4'                      | 139fc       | 2'-10"        |
| 6'                      | 61.9fc      | 4'-2"         |
| 8'                      | 34.8fc      | 5'-6"         |
| 10'                     | 22.3fc      | 6'-11"        |
| 12'                     | 15.5fc      | 8'-4"         |

### Zonal Lumen Summary

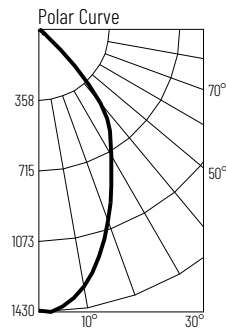
| Zone   | Lumens | % Luminaire |
|--------|--------|-------------|
| 0-30   | 953    | 64.3        |
| 0-40   | 1235   | 83.3        |
| 0-60   | 1462   | 98.7        |
| 0-90   | 1480   | 99.8        |
| 90-180 | 2      | 0.2         |
| 0-180  | 1482   | 100         |

### Candela Table

| Vertical Angles | Candela |
|-----------------|---------|
| 0               | 2228    |
| 5               | 2133    |
| 15              | 1512    |
| 25              | 707     |
| 35              | 499     |
| 45              | 218     |

### Test Information

Test Number: NTR1370  
Part Number: NI0-4SC40XWW/10  
Beam Spread: 61° Flood  
Lumens: 1500lm  
Wattage: 13.47W  
Efficacy: 111pw  
CCT / CRI: 4000K / 90 CRI  
Spacing Criteria (0°-180): 0.86  
Spacing Criteria (90°-270): 0.88



### Illuminance at a Distance

| Distance from Luminaire | FC at Nadir | Beam Diameter |
|-------------------------|-------------|---------------|
| 4'                      | 88.9fc      | 4'-8"         |
| 6'                      | 39.5fc      | 7'            |
| 8'                      | 22.2fc      | 9'-5"         |
| 10'                     | 14.2fc      | 11'-8"        |
| 12'                     | 9.9fc       | 14'           |

### Zonal Lumen Summary

| Zone   | Lumens | % Luminaire |
|--------|--------|-------------|
| 0-30   | 855    | 57          |
| 0-40   | 1239   | 82.6        |
| 0-60   | 1468   | 97.9        |
| 0-90   | 1494   | 99.6        |
| 90-180 | 6      | 0.4         |
| 0-180  | 1500   | 100         |

### Candela Table

| Vertical Angles | Candela |
|-----------------|---------|
| 0               | 1423    |
| 5               | 1392    |
| 15              | 1174    |
| 25              | 854     |
| 35              | 619     |
| 45              | 247     |

### Lumen Output Multipliers

Color Temperature: 2700K (0.82), 3000K (0.84), 3500K (0.92), 4000K (1.00), 5000K (0.97)

# PHOTOMETRICS

## 4" Iolite Square Adjustable Cone Reflector 1500 lumens

Type

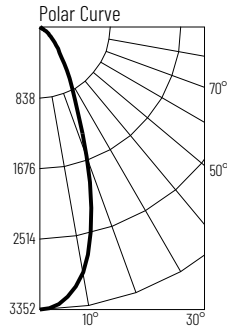
Project

Catalog No.

Notes

### Test Information

Test Number: NTR1273R1  
Part Number: N10-4SC40XWW/HL  
Beam Spread: 39° Spot  
Lumens: 2113lm  
Wattage: 19.91W  
Efficacy: 106pw  
CCT / CRI: 4000K / 90 CRI  
Spacing Criteria (0°-180): 0.64  
Spacing Criteria (90°-270): 0.66



### Illuminance at a Distance

| Distance from Luminaire | FC at Nadir | Beam Diameter |
|-------------------------|-------------|---------------|
| 6'                      | 93fc        | 4'-4"         |
| 8'                      | 52.3fc      | 5'-8"         |
| 10'                     | 33.5fc      | 7'-1"         |
| 12'                     | 23.3fc      | 8'-6"         |
| 14'                     | 17.1fc      | 9'-11"        |

### Zonal Lumen Summary

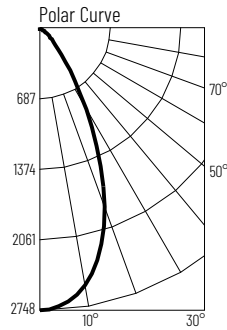
| Zone   | Lumens | % Luminaire |
|--------|--------|-------------|
| 0-30   | 1435   | 67.9        |
| 0-40   | 1751   | 82.9        |
| 0-60   | 2055   | 97.3        |
| 0-90   | 2104   | 99.6        |
| 90-180 | 9      | 0.4         |
| 0-180  | 2113   | 100         |

### Candela Table

| Vertical Angles | Candela |
|-----------------|---------|
| 0               | 3349    |
| 5               | 3234    |
| 15              | 2311    |
| 25              | 1058    |
| 35              | 494     |
| 45              | 247     |

### Test Information

Test Number: NTR1244R1  
Part Number: N10-4SC40XWW/HL  
Beam Spread: 51° Narrow Flood  
Lumens: 2219lm  
Wattage: 19.9W  
Efficacy: 111pw  
CCT / CRI: 4000K / 90 CRI  
Spacing Criteria (0°-180): 0.8  
Spacing Criteria (90°-270): 0.82



### Illuminance at a Distance

| Distance from Luminaire | FC at Nadir | Beam Diameter |
|-------------------------|-------------|---------------|
| 6'                      | 76.3fc      | 5'-8"         |
| 8'                      | 42.9fc      | 7'-6"         |
| 10'                     | 27.5fc      | 9'-5"         |
| 12'                     | 19.1fc      | 11'-4"        |
| 14'                     | 14fc        | 13'-2"        |

### Zonal Lumen Summary

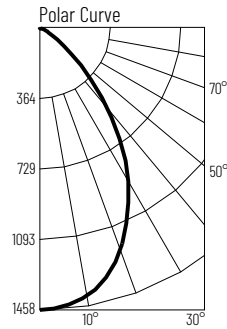
| Zone   | Lumens | % Luminaire |
|--------|--------|-------------|
| 0-30   | 1524   | 68.7        |
| 0-40   | 1904   | 85.8        |
| 0-60   | 2167   | 97.7        |
| 0-90   | 2209   | 99.6        |
| 90-180 | 10     | 0.4         |
| 0-180  | 2219   | 100         |

### Candela Table

| Vertical Angles | Candela |
|-----------------|---------|
| 0               | 2748    |
| 5               | 2691    |
| 15              | 2254    |
| 25              | 1402    |
| 35              | 590     |
| 45              | 218     |

### Test Information

Test Number: NTR1279R1  
Part Number: N10-4SC40XWW/HL  
Beam Spread: 71° Flood  
Lumens: 1937lm  
Wattage: 19.85W  
Efficacy: 98pw  
CCT / CRI: 4000K / 90 CRI  
Spacing Criteria (0°-180): 1.02  
Spacing Criteria (90°-270): 1.04



### Illuminance at a Distance

| Distance from Luminaire | FC at Nadir | Beam Diameter |
|-------------------------|-------------|---------------|
| 6'                      | 40.5fc      | 8'-6"         |
| 8'                      | 22.8fc      | 11'-5"        |
| 10'                     | 14.6fc      | 14'-2"        |
| 12'                     | 10.1fc      | 17'           |
| 14'                     | 7.4fc       | 19'-11"       |

### Zonal Lumen Summary

| Zone   | Lumens | % Luminaire |
|--------|--------|-------------|
| 0-30   | 1010   | 52.1        |
| 0-40   | 1434   | 74          |
| 0-60   | 1871   | 96.5        |
| 0-90   | 1929   | 99.5        |
| 90-180 | 9      | 0.5         |
| 0-180  | 1937   | 100         |

### Candela Table

| Vertical Angles | Candela |
|-----------------|---------|
| 0               | 1456    |
| 5               | 1441    |
| 15              | 1335    |
| 25              | 1084    |
| 35              | 745     |
| 45              | 360     |

### Lumen Output Multipliers

Color Temperature: 2700K (0.83), 3000K (0.89), 3500K (1.00), 4000K (1.00), 5000K (1.06)

# PHOTOMETRICS

## 4" Iolite Square Adjustable Cone Reflector 2000 lumens

Type

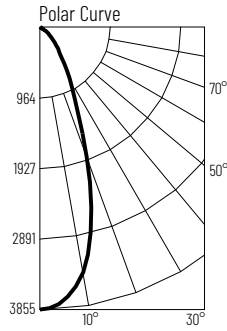
Project

Catalog No.

Notes

### Test Information

Test Number: NTR1274R1  
Part Number: N10-4SC40XWW/HL  
Beam Spread: 39° Spot  
Lumens: 2420lm  
Wattage: 23.94W  
Efficacy: 101pw  
CCT / CRI: 4000K / 90 CRI  
Spacing Criteria (0°-180): 0.64  
Spacing Criteria (90°-270): 0.66



### Illuminance at a Distance

| Distance from Luminaire | FC at Nadir | Beam Diameter |
|-------------------------|-------------|---------------|
| 8'                      | 60fc        | 4'-2"         |
| 10'                     | 38.4fc      | 5'-7"         |
| 12'                     | 26.7fc      | 7'-1"         |
| 14'                     | 19.6fc      | 9'-11"        |
| 16'                     | 15fc        | 11'-4"        |

### Zonal Lumen Summary

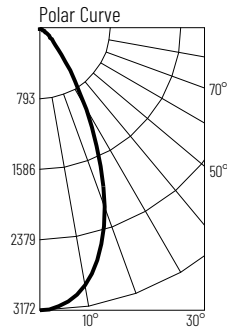
| Zone   | Lumens | % Luminaire |
|--------|--------|-------------|
| 0-30   | 1642   | 67.8        |
| 0-40   | 2004   | 82.8        |
| 0-60   | 2354   | 97.3        |
| 0-90   | 2410   | 99.6        |
| 90-180 | 11     | 0.4         |
| 0-180  | 2420   | 100         |

### Candela Table

| Vertical Angles | Candela |
|-----------------|---------|
| 0               | 3841    |
| 5               | 3688    |
| 15              | 2627    |
| 25              | 1206    |
| 35              | 565     |
| 45              | 283     |

### Test Information

Test Number: NTR1275R1  
Part Number: N10-4SC40XWW/HL  
Beam Spread: 51° Narrow Flood  
Lumens: 2549lm  
Wattage: 24W  
Efficacy: 106pw  
CCT / CRI: 4000K / 90 CRI  
Spacing Criteria (0°-180): 0.8  
Spacing Criteria (90°-270): 0.82



### Illuminance at a Distance

| Distance from Luminaire | FC at Nadir | Beam Diameter |
|-------------------------|-------------|---------------|
| 8'                      | 49.4fc      | 7'-6"         |
| 10'                     | 31.6fc      | 9'-5"         |
| 12'                     | 22fc        | 11'-2"        |
| 14'                     | 16.1fc      | 11'           |
| 16'                     | 12.4fc      | 15'           |

### Zonal Lumen Summary

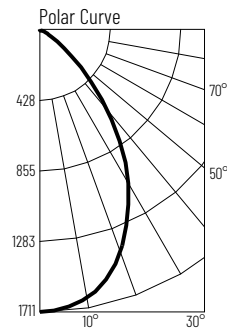
| Zone   | Lumens | % Luminaire |
|--------|--------|-------------|
| 0-30   | 1752   | 68.7        |
| 0-40   | 2188   | 85.8        |
| 0-60   | 2491   | 97.7        |
| 0-90   | 2538   | 99.6        |
| 90-180 | 11     | 0.4         |
| 0-180  | 2549   | 100         |

### Candela Table

| Vertical Angles | Candela |
|-----------------|---------|
| 0               | 3162    |
| 5               | 3091    |
| 15              | 2585    |
| 25              | 1604    |
| 35              | 675     |
| 45              | 248     |

### Test Information

Test Number: NTR1280R1  
Part Number: N10-4SC40XWW/HL  
Beam Spread: 71° Flood  
Lumens: 2266lm  
Wattage: 24.19W  
Efficacy: 94pw  
CCT / CRI: 4000K / 90 CRI  
Spacing Criteria (0°-180): 1.02  
Spacing Criteria (90°-270): 1.04



### Illuminance at a Distance

| Distance from Luminaire | FC at Nadir | Beam Diameter |
|-------------------------|-------------|---------------|
| 8'                      | 26.7fc      | 11'-4"        |
| 10'                     | 17.1fc      | 14'-2"        |
| 12'                     | 11.9fc      | 17'           |
| 14'                     | 8.7fc       | 19'-11"       |
| 16'                     | 6.7fc       | 22'-8"        |

### Zonal Lumen Summary

| Zone   | Lumens | % Luminaire |
|--------|--------|-------------|
| 0-30   | 1182   | 52.2        |
| 0-40   | 1678   | 74          |
| 0-60   | 2188   | 96.5        |
| 0-90   | 2256   | 99.5        |
| 90-180 | 10     | 0.5         |
| 0-180  | 2266   | 100         |

### Candela Table

| Vertical Angles | Candela |
|-----------------|---------|
| 0               | 1707    |
| 5               | 1690    |
| 15              | 1645    |
| 25              | 1271    |
| 35              | 874     |
| 45              | 422     |

### Lumen Output Multipliers

Color Temperature: 2700K (0.84), 3000K (0.87), 3500K (0.99), 4000K (1.00), 5000K (1.07)

# PHOTOMETRICS

## 4" Iolite Square Adjustable Cone Reflector 2500 lumens

Type

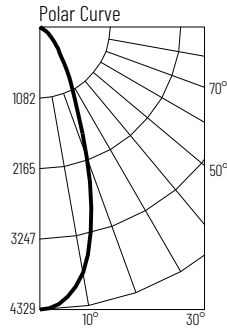
Project

Catalog No.

Notes

### Test Information

Test Number: NTR1275R1  
Part Number: N10-4SC40XWW/HL  
Beam Spread: 39° Spot  
Lumens: 2712lm  
Wattage: 27.74W  
Efficacy: 98pw  
CCT / CRI: 4000K / 90 CRI  
Spacing Criteria (0°-180): 0.64  
Spacing Criteria (90°-270): 0.66



### Illuminance at a Distance

| Distance from Luminaire | FC at Nadir | Beam Diameter |
|-------------------------|-------------|---------------|
| 10'                     | 43.1fc      | 7'-1"         |
| 12'                     | 30fc        | 8'-6"         |
| 14'                     | 22fc        | 9'-11"        |
| 16'                     | 16.8fc      | 11'-4"        |
| 18'                     | 13.3fc      | 12'-8"        |

### Zonal Lumen Summary

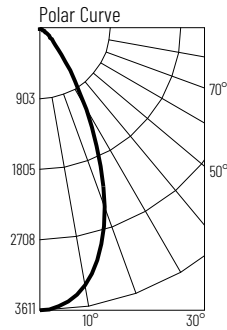
| Zone   | Lumens | % Luminaire |
|--------|--------|-------------|
| 0-30   | 1842   | 67.9        |
| 0-40   | 2247   | 82.9        |
| 0-60   | 2637   | 97.3        |
| 0-90   | 2700   | 99.6        |
| 90-180 | 12     | 0.4         |
| 0-180  | 2712   | 100         |

### Candela Table

| Vertical Angles | Candela |
|-----------------|---------|
| 0               | 4313    |
| 5               | 4138    |
| 15              | 2952    |
| 25              | 1349    |
| 35              | 630     |
| 45              | 315     |

### Test Information

Test Number: NTR1276R1  
Part Number: N10-4SC40XWW/HL  
Beam Spread: 51° Narrow Flood  
Lumens: 2897lm  
Wattage: 27.81W  
Efficacy: 104pw  
CCT / CRI: 4000K / 90 CRI  
Spacing Criteria (0°-180): 0.8  
Spacing Criteria (90°-270): 0.82



### Illuminance at a Distance

| Distance from Luminaire | FC at Nadir | Beam Diameter |
|-------------------------|-------------|---------------|
| 10'                     | 36fc        | 9'-4"         |
| 12'                     | 25fc        | 11'-2"        |
| 14'                     | 18.3fc      | 13'-1"        |
| 16'                     | 14fc        | 15'           |
| 16'                     | 11.1fc      | 16'-10"       |

### Zonal Lumen Summary

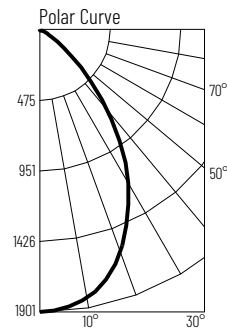
| Zone   | Lumens | % Luminaire |
|--------|--------|-------------|
| 0-30   | 1989   | 68.7        |
| 0-40   | 2485   | 85.8        |
| 0-60   | 2830   | 97.7        |
| 0-90   | 2884   | 99.6        |
| 90-180 | 13     | 0.4         |
| 0-180  | 2897   | 100         |

### Candela Table

| Vertical Angles | Candela |
|-----------------|---------|
| 0               | 3596    |
| 5               | 3507    |
| 15              | 2930    |
| 25              | 1818    |
| 35              | 761     |
| 45              | 280     |

### Test Information

Test Number: NTR1281R1  
Part Number: N10-4SC40XWW/HL  
Beam Spread: 71° Flood  
Lumens: 2519lm  
Wattage: 27.68W  
Efficacy: 91pw  
CCT / CRI: 4000K / 90 CRI  
Spacing Criteria (0°-180): 1.02  
Spacing Criteria (90°-270): 1.04



### Illuminance at a Distance

| Distance from Luminaire | FC at Nadir | Beam Diameter |
|-------------------------|-------------|---------------|
| 10'                     | 19fc        | 14'-2"        |
| 12'                     | 13.2fc      | 17'           |
| 14'                     | 9.7fc       | 19'-10"       |
| 16'                     | 7.4fc       | 22'-8"        |
| 16'                     | 5.9fc       | 25'-6"        |

### Zonal Lumen Summary

| Zone   | Lumens | % Luminaire |
|--------|--------|-------------|
| 0-30   | 1313   | 52.1        |
| 0-40   | 1864   | 74          |
| 0-60   | 2432   | 96.5        |
| 0-90   | 2508   | 99.6        |
| 90-180 | 11     | 0.4         |
| 0-180  | 2519   | 100         |

### Candela Table

| Vertical Angles | Candela |
|-----------------|---------|
| 0               | 1899    |
| 5               | 1875    |
| 15              | 1735    |
| 25              | 1410    |
| 35              | 969     |
| 45              | 466     |

### Lumen Output Multipliers

Color Temperature: 2700K (0.82), 3000K (0.89), 3500K (0.99), 4000K (1.00), 5000K (1.05)