



Getting Started Guide



zigbee

certified
product

PLUG-IN DIMMER

Cat. No. DG3HL

WEB VERSION



Welcome to the Decora Smart™ family of Zigbee® enabled devices



See the complete line of Zigbee enabled
dimmers, switches and plug-ins
leviton.com/decorasmart

WEB VERSION



Welcome



The Decora Smart™ Plug-In Dimmer with Zigbee® technology is designed for use with Zigbee hubs. Using mesh networking technology Zigbee provides quick, reliable, secure communication to a wide variety of smart products.

Manual on/off control is convenient using the backlit, forward facing button. Add your plug-in dimmer to a Zigbee hub to control it with your smartphone or voice interface.



We are here to help



CALL

1-800-824-3005 (USA)
1-800-405-5320 (Canada)



CHAT

leviton.com



ONLINE

leviton.com/decorasmart



EMAIL

dssupport@leviton.com



Your plug-in dimmer works with:

The Decora Smart™ Plug-In Dimmer with Zigbee® technology is compatible with dimmable LED, dimmable CFL, and incandescent bulbs. Your plug-in dimmer should not be used with motor loads.



For LED compatibility recommendations, go to leviton.com/LED.

RATINGS	
LED / CFL	100W - 120VAC, 60Hz
Incandescent	300W - 120VAC, 60Hz
Operating Temp	0°C - 40°C (32°F - 104°F)
Operating Humidity	0-90% non-condensing
NETWORK	
Zigbee	Zigbee 3.0 Certified



Features

Back-lit button

- Shows on/off status of the load
- Helps locate the button in the dark
- Use to turn the load on/off
- Use to enter programming/ joining mode



Load Connection

- Downward facing - great for use behind furniture

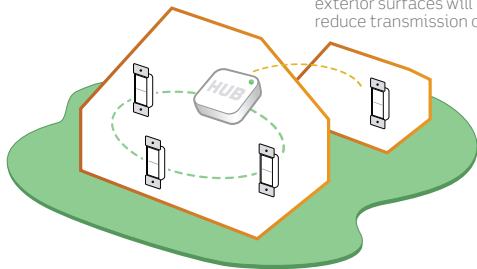


Before you install

Something to consider:

Zigbee is a mesh network. It must be installed within 30 ft of hub or another Zigbee 3.0 compliant device.

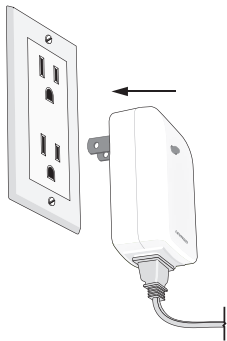
NOTE: Communication through exterior surfaces will likely reduce transmission distances.





Installation

1. Plug your lamp into the plug-in dimmer.
2. Insert plug-in dimmer into any non-switched 120VAC receptacle.
3. Your plug-in dimmer is now ready to join the network.



Add your plug-in dimmer to a hub

To control your plug-in dimmer with your phone, add it to a compatible Zigbee hub. Use the hub's app and follow the instructions for adding a dimmer. When you power up your plug-in dimmer it immediately enters inclusion mode (some hubs may use the term connect, join or pair). If the hub uses older inclusion processes contact technical services for specific product instructions.



Factory default

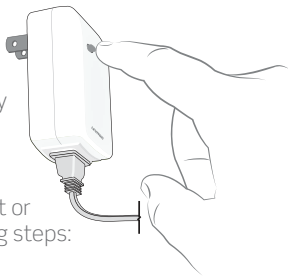
Reset your plug-in dimmer to factory settings and place in joining mode:

1. Hold the backlit button for a total of 14 seconds.
2. After the first 7 seconds the light turns amber. Continue to hold.
3. After a total of 14 seconds, the light will quickly flash red/amber.
4. Release the button and the plug-in dimmer will reset.



Manually start/stop joining

When you first power on your plug-in dimmer or perform a factory reset the green status light will automatically flash. This indicates the plug-in is in joining mode. It will remain in this state for 30 minutes or until the plug-in is added to a network. To manually start or stop joining mode perform the following steps:



- 1.** Press and hold the button for 7 seconds. Status light will turn amber.
- 2a.** To start joining mode press the button 1 time. The status light will flash green rapidly to indicate it is in joining mode.
- 2b.** To stop joining mode press the button 1 time. The plug-in will leave joining mode. NOTE: the device can still be operated manually even if not joined to a hub.



Quick Tips

If your plug-in dimmer is not performing as expected, visit leviton.com/decorasmart or contact technical services.

- Intermittent dimming operation:
 - Confirm the load does not exceed ratings.



Safety First

WARNING: TO AVOID FIRE, PERSONAL INJURY OR DEATH DO NOT USE

the dimmer for the control of high power heating appliances such as portable heaters. There can be unexpected consequences if not used with care. For example, an empty coffee pot can be remotely turned on. If that should happen, your coffee pot could be damaged from overheating. If an electric heater is turned on by remote control while clothing is draped over it, a fire could result. This module will not control lighting that is used with electronic low-voltage and high frequency power supply transformers, nor high pressure discharge lamps (HID lighting). This includes mercury-vapor, sodium vapor and metal halide lamps.

WARNINGS:

- To reduce the risk of overheating and possible damage to other equipment do not install to control a motor-operated appliance, fluorescent lighting fixture, or a transformer supplied appliance.
- This product is to be installed and/or used in accordance with electrical codes and regulations.
- Indoor use only.
- If you are unsure about any part of these instructions, consult an electrician.
- Unplug unit when servicing loads.
- Save this instruction sheet. It contains important technical data along with testing and troubleshooting information which will be useful after installation is complete.

Limited 5 Year Warranty

For Leviton's limited product warranty, go to www.leviton.com. For a printed copy of the warranty, call 1-800-824-3005.

FOR CANADA ONLY

For warranty information and/or product returns, residents of Canada should contact Leviton in writing at Leviton Manufacturing of Canada ULC to the attention of the **Quality Assurance Department, 165 Hymus Blvd, Pointe-Claire (Quebec), Canada H9R 1E9 or by telephone at 1 800 405-5320.**

FCC COMPLIANCE STATEMENT

The enclosed device complies with Part 15 of the FCC Rules. Operation is subject to the following two conditions: (i.) This device may not cause harmful interference (ii.) This device must accept any interference received, including interference that may cause undesired operation. Any changes or modifications not expressly approved by Leviton could void the user's authority to operate this equipment. This equipment has been tested and found to comply with the limits for a Class B digital device, pursuant to part 15 of the FCC Rules. These limits are designed to provide reasonable protection against harmful interference in a residential installation. This equipment generates uses and can radiate radio frequency energy and, if not installed and used in accordance with the instructions, may cause harmful interference to radio communications. However, there is no guarantee that interference will not occur in a particular installation. If this equipment does cause harmful interference to radio or television reception, which can be determined by turning the equipment off and on, the user is encouraged to try to correct the interference by one or more of the following measures:

- Reorient or relocate the receiving antenna.
- Increase the separation between the equipment and receiver.
- Connect the equipment into an outlet on a circuit different from that to which the receiver is connected.
- Consult the dealer or an experienced radio/TV technician for help.

FCC CAUTION

Any changes or modifications not expressly approved by Leviton Manufacturing Co., Inc., could void the user's authority to operate the equipment.

FCC SUPPLIER'S DECLARATION OF CONFORMITY:

Model DG3HL - plug-in dimmer is manufactured by Leviton Manufacturing Co., Inc., www.leviton.com.

This device complies with part 15 of the FCC Rules. Operation is subject to the following two conditions:

(1) This device may not cause harmful interference, and (2) this device must accept any interference received, including interference that may cause undesired operation.

IC STATEMENT

This device complies with Industry Canada license-exempt RSS standard(s). Operation is subject to the following two conditions: (1) this device may not cause interference, and (2) this device must accept any interference, including interference that may cause undesired operation of the device.

RF EXPOSURE AND CO-LOCATION:

To comply with FCC OET Bulletin 65 and ISED RF exposure limits for general population and uncontrolled exposure, this device shall be installed and operated with a minimum distance of 7.9 inches (20 cm) between the radiator and your body. Also, must not be co-located or operated in conjunction with any other antenna or transmitter.

Copyright and Trademark Information

The Leviton logo and Decora Smart are trademarks of Leviton Manufacturing Co., Inc. Zigbee is a U.S. registered trademark of Zigbee Alliance. Use herein of other third party trademarks, service marks, trade names, brand names and/or product names are for informational purposes only, are/may be the trademarks of their respective owners; such use is not meant to imply affiliation, sponsorship, or endorsement. No part of this document may be reproduced, transmitted or transcribed without the express written permission of Leviton Manufacturing Co., Inc.

Copyright 2020 Leviton Mfg. Co., Inc.

If you need help...



CALL

1-800-824-3005 (USA)

1-800-405-5320 (Canada)



ONLINE

leviton.com/decorasmart



CHAT

leviton.com



EMAIL

dssupport@leviton.com

Leviton Manufacturing Co., Inc.
201 North Service Road, Melville, NY 11747
Telephone: 1-800-824-3005

Visit Leviton's website at www.leviton.com
© 2020 Leviton Manufacturing Co., Inc. All rights reserved.

Specifications subject to change at any time without notice.

DI-000-DG3HL-02A

WEB VERSION