

DESCRIPTION

The patent pending Lumark Crosstour™ Floodlight Kit easily attaches to the Crosstour LED Wall Pack luminaire. The floodlight kit converts 10W, 20W and 30W Crosstour wall mount luminaires into floodlighting luminaires suitable for ground or wall mount applications. Crosstour LED offers seamless architectural style with super bright energy efficient LEDs. The low-profile, rugged construction of the easy to install knuckle or trunnion base along with stainless steel hardware, visors and impact guards make Crosstour LED an “all-in-one” universal product offering that installs virtually anywhere.

Catalog #		Type	
Project			
Comments		Date	
Prepared by			

SPECIFICATION FEATURES

Application

The Crosstour LED luminaire with knuckle or trunnion floodlight kit is ideal for floodlight illumination of ground mounted signage, building façade architecture or for wall mount applications where greater forward throw illumination is needed.

Construction

KNUCKLE FLOODLIGHTING BASE: Heavy-duty, die-cast aluminum knuckle base utilizes tooth-lock adjustment mechanism for both solid engagement and easy aiming adjustment. Visual 15° adjustment indicators allow for 180° rotation of the luminaire. Knuckle adjustment is made via the stainless steel screw. Knuckle is 3G vibration rated. Knuckle fits 1/2” NPS available mounting junction box cover (supplied by others) and is secured with supplied locking nut. Attaches directly to the Crosstour LED Wall Mount back box via the supplied magnetic stainless steel hardware.

TRUNNION FLOODLIGHTING

BASE: Adjustable heavy-gauge steel trunnion-mount utilizes interlocking slide adjustment mechanism for precise aiming and secure installation. Supplied standard with 12” of pre-wired SOOW 600V wet location rated cord. Visual 15° adjustment indicators allow for 180° rotation of the luminaire. Trunnion base can be lag bolted to any surface and is 3G vibration rated. Quickly attaches to the Crosstour LED Wall Mount back box via the supplied magnetic stainless steel hardware.

Electrical

Three-wire electrical conductor wire is pre-wired to the knuckle base allowing easy wiring to junction box utility power and to the Crosstour LED luminaire. Trunnion base includes 12” SOOW cord/whip. The SOOW cord is 18AWG and is rated for -40°C to 90°C. SOOW cord is highly flexible and features stranded copper conductors, separator and is secured in a thermoplastic elastomeric rubber jacket.

Top Visors and Impact Guards

Supplied with heavy -duty steel top visors that quickly attach to the Crosstour LED Wall Pack 10W, 20W and 30W housing via the supplied stainless steel hardware. Crosstour top visors control glare and spill light in all directions. Useful in uplighting applications to limit light travel above intended wall surface or sign. 1/8” Thick UV stabilized impact guards install directly into the visor via the side-slot lock feature. Useful in protecting the Crosstour LED glass lens from projectile objects when mounted at low levels.

Finish

Crosstour is protected with a 5-stage TGIC Super durable carbon bronze or summit white polyester powder coat paint. Premium TGIC powder coat paint finishes withstand extreme climate conditions while providing optimal color and gloss retention of the Crosstour installed life.



LUMINAIRE SOLD SEPARATELY

Crosstour LED Floodlight Kit

CERTIFICATION DATA

(Floodlight Kit Only)
UL/cUL Wet Location Listed
3G Vibration Rated Trunnion

SHIPPING DATA:

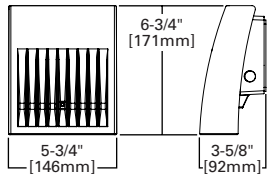
Approximate Net Weight:
1.2 – 1.9 lbs. (0.5 – 0.9 kgs.)

STOCK ORDERING INFORMATION

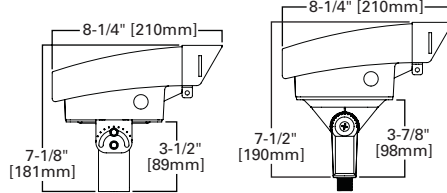
Knuckle Mount Floodlighting Kit	Trunnion Mount Floodlighting Kit
XTORFLD-KNC =Carbon Bronze Knuckle Base With Locking Nut, Small and Large Top Visors and Impact Shields	XTORFLD-TRN =Carbon Bronze Trunnion Base With 12" Wet Location SOOW Cord, Small and Large Top Visors and Impact Shields
XTORFLD-KNC-WHT =Summit White Knuckle Base With Locking Nut, Small and Large Top Visors and Impact Shields	XTORFLD-TRN-WHT =Summit White Trunnion Base With 12" Wet Location SOOW Cord, Small and Large Top Visors and Impact Shields

DIMENSIONS

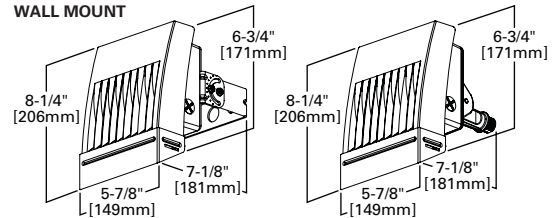
SMALL (10W and 20W)



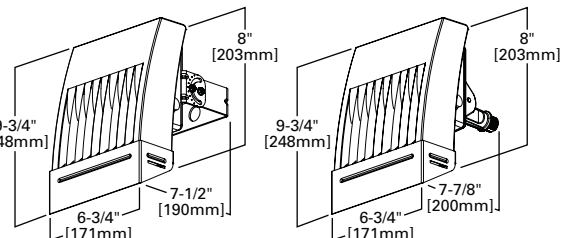
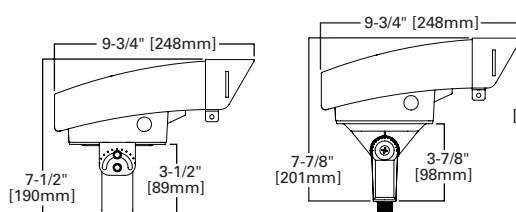
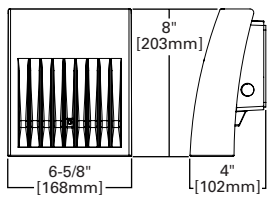
GROUND MOUNT



WALL MOUNT



LARGE (30W)



LUMEN MAINTENANCE

Ambient Temperature	TM-21 Lumen Maintenance (72,000 Hours)	Theoretical L70 (Hours)
10W Model		
25°C	> 91%	> 350,000
40°C	> 91%	> 340,000
50°C	> 91%	> 330,000
20W Model		
25°C	> 91%	> 340,000
40°C	> 90%	> 320,000
50°C	> 90%	> 300,000
30W Model		
25°C	> 91%	> 340,000
40°C	> 91%	> 320,000
50°C	> 90%	> 300,000

CRI/CCT TABLE

LED Information	XTOR1A	XTOR2A	XTOR2A-N	XTOR3A	XTOR3A-N
Delivered Lumens (Wall Mount)	734	1432	1323	2649	2273
Delivered Lumens (With Flood Accessory Kit)	713	1424	1315	2614	2243
B.U.G. Rating*	B1-U0-G0	B1-U0-G0	B1-U0-G0	B1-U0-G0	B1-U0-G0
CCT (Kelvin)	5000	5000	3500	5000	3500
CRI (Color Rendering Index)	67	65	68	65	68
Power Consumption (Watts)	8W	21W	21W	30W	30W

* B.U.G. Rating does not apply to floodlighting.

CURRENT DRAW

Voltage	Model Series		
	10W	20W	30W
120V	0.06A	0.21A	0.29A
208V	0.04A	0.13A	0.18A
240V	0.04A	0.12A	0.16A
277V	0.03A	0.10A	0.14A
347V	0.03A	0.08A	0.11A