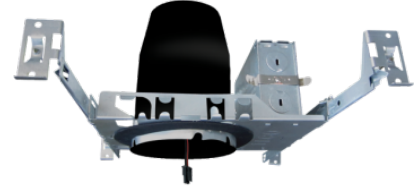


3" IC Airtight New Construction Housing for Architectural Koto™ LED Engine



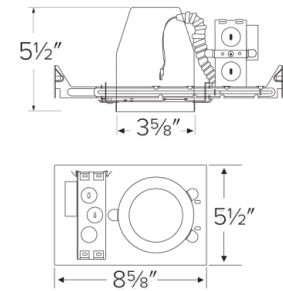
Features

- IC Airtight for direct contact with insulation.
- Koto™ Architectural Housing: 120/277V 0-10V/Triac/ELV or 120V Triac/ELV with optional Emergency Battery Backup.
- Must be used with Architectural Koto™ LED Light Engines (ELK19 or ELK21 Series).
- Lumen output based on module

Specifications

Wattage	10.5W
Lumens	750 (ELK19) - 950 (ELK21) lm
Voltage	120/277V or 120V
Dimmable	Triac/ELV, 0-10V/Triac/ELV

Dimensions



Technical Details

Lamp: Designed for use with ELCO Architectural Koto™ LED Light Engines (ELK19 or ELK21 Series)

Construction: Single wall IC rated for direct contact with insulation, for use in IC or non-IC conditions. Housing adjusts in frame to accommodate up to 1 1/2" ceiling thickness. Airtight housing with gasket to restrict airflow in accordance with ASTM E-283 air-tight requirements.

Installation: Designed for ceiling plenums where 2x6 joists or taller joists are used. High strength hanger bars can easily be nailed to joists. Maximum hole cutout is 3 5/8". Suitable for t-grid and drop ceiling applications. See installation sheet for detailed information.

Junction Box: Positioned to accommodate straight conduit runs. Seven 1/2" trade size conduit knockouts, four 3/4" knockouts. Pry-out knockout slots. 4 Romex pryouts with strain relief.

Hanger Bars: Pre-installed hanger bars with True Nail facilitate easy installation in regular lumber, engineered lumber, and laminated beams. Integral T-bar slots for easy installation in T-bars. Spans up to 24" and can be repositioned 90°. Score lines allow for tool-free hanger bar size reduction. Integral leveling flange allows for single-person installation while aligning the housings with the joists.

Electrical: Input Voltage: 120V or 120/277V. **Dimmability:** Triac/ELV or 0-10V/Triac/ELV

Listings: UL Listed for Damp Location. UL Listed for Wet Location with select trims. UL Listed for Feed Through. UL Listed for Direct Contact with Insulation and Combustible Material. Airtight per ASTM E-283. Install a JA8-2016-E lamp/luminaire for Title 24 Compliance.

Warranty: ELCO Lighting warrants products will be free from defects in materials and workmanship for a period of 5 years.

Product Numbers

Item	Description	Lumens	Watts	Voltage	Dimming
E3LK65ICA	New Construction	750 (ELK19) - 950 (ELK21) lm	10.5W	120V	Triac/ELV
E3LK66ICAD	New Construction	750 (ELK19) - 950 (ELK21) lm	10.5W	120/277V	0-10V/Triac/ELV
E3LK65ICA-EM1	with 90 min. Emergency Battery Back-Up	750 (ELK19) - 950 (ELK21) lm	10.5W	120V	Triac/ELV
E3LK66ICAD-EM1	with 90 min. Emergency Battery Back-Up	750 (ELK19) - 950 (ELK21) lm	10.5W	120/277V	0-10V/Triac/ELV

Product Number Builder Example: E3LK65ICA

3" Koto™ Standard ICA Housing

Voltage

Dimming

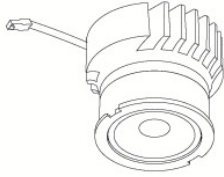
E3LK
65 120V
66 120/277V

ICA Triac/ELV
ICAD 0-10V/Triac/ELV

Compatible Products

For use with Dedicated 3" Architectural ICA LED Housings

Koto™ Architectural LED Light Engine



Koto™ LED Light Engine
ELK19 - ELK21

PRODUCT NUMBER BUILDER			
Koto™ LED Light Engine	Lumens	Color Temperature	Beam Angle
ELK			
19	750 - 850 lm	27D 2700K	(blank) 38° lens (Standard)
21	1100 - 1500 lm	30D 3000K	-S 18° lens
		35D 3500K	-N 25° lens
		40D 4000K	-W 60° lens
		SD Sunset Dimming (ELK19 Only)	

ACCESSORIES	
Lens	Reflectors
EP731C 18° Lens	EP735C 15°
EP732C 25° Lens	EP736C 25°
EP733C 38° Lens	EP737C 38°
EP734C 60° Lens	EP738C 60°
<small>*EP732C, EP733C, EP734C Included</small>	
Secondary Optics	
L45 Hex Louver	
L46 Linear Louver	
L47 Spread Louver	

3" Pex™ Twist-&-Lock Trims

Deep Reflector
ELK3618
Finishes:
(W, BB, BZ, B, C, H)

Adjustable Gimbal
ELK3629
Finishes:
(W, BB, BZ, B, C, H)

Adjustable Pinhole
ELK3627
Finishes:
(B, BB, BZ)

Adjustable Baffle
ELK3693
Finishes:
(W)

Sq. Deep Reflector
ELK3318
Finishes:
(W, BB, BZ, B, C, H)

Sq. Adjustable Gimbal
ELK3329
Finishes:
(W, BB, BZ, B, C, H)

Sq. Adjustable Baffle
ELK3393
Finishes:
(W)

Sq. Adjustable Pinhole
ELK3327
Finishes:
(B, BB, BZ)

*Finishes: **W** - All White, **BB** - All Black, **BZ** - All Bronze, **B** - Black Reflector w/White Ring, **C** - Chrome Reflector w/White Ring, **H** - Haze Reflector w/White Ring