

HDMI Matrix System

HDTVIM44 HDMI Matrix

User Manual



Brief Introduction

HDTVIM44 HDMI matrix with 12V power adapter for multiple HDMI sources to multiple display devices by different routing. With high reliability, low power consumption, high bandwidth (support HDMI 1.4) features, HDTVIM44 can achieve up to 4x4 size.

User can control the matrix operation by panel buttons, PC serial port.

User Control

1. Front Panel



SEL A: Select the input source for HDMI output A

SEL B: Select the input source for HDMI output B

SEL C: Select the input source for HDMI output C

SEL D: Select the input source for HDMI output D

1,2,3,4 : Shows the input source which is selected

Act : Shows if the corresponding input signal is active

Link : Shows if the sink device is connected

SEL EDID: EDID option

Auto: Auto parse EDID;

Manual: User can configure the EDID with PC Tool

2D: EDID option_2D

3D: EDID option_3D

IR: For Remoter control (optional)

2. Back Panel



INPUT: HDMI input 1,2,3,4 which connected to source devices

OUTPUT: HDMI output A,B,C,D connected to sink devices

RS232: PC tool interface

ON/OFF: Power on/off switching

DC/12V:12V adapter input

PC tool user guide-RS232

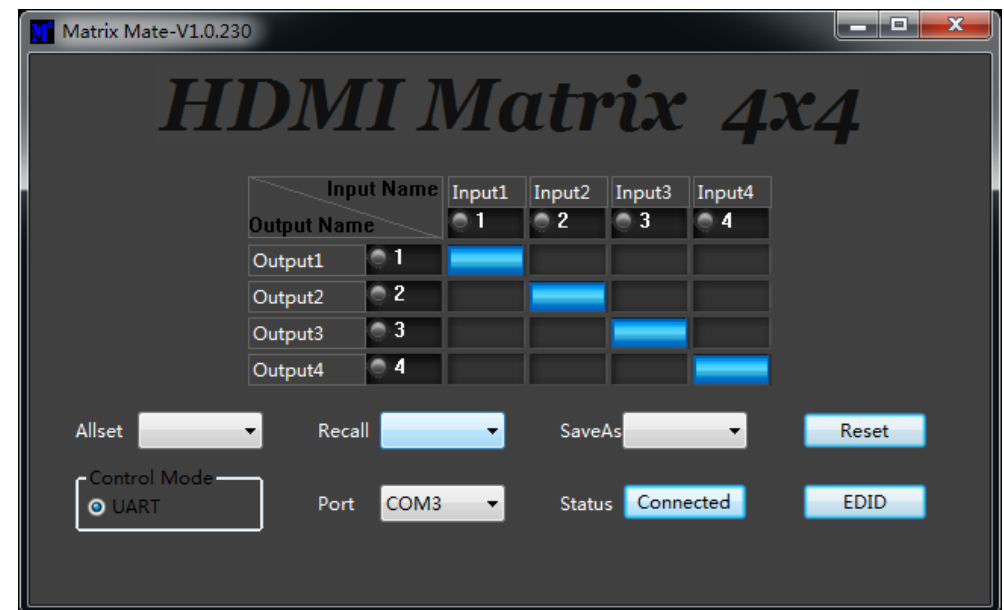
The PC tool can control the matrix via COM port, and there will be two parts of operation guide, which consists of the connection operation of COM port and the control operation of matrix.

Instruction of connection via COM port:

- 1) Connect the PC and HDTVIM44 matrix with RS232 cable, and please make sure that the driver of RS232 is working well.
- 2) Double click the PC **tool software**. It will automatically connect to the matrix via COM port.
- 3) If the connection is **successful**, the corresponding display will be blue.
- 4) If the connection is **failed**, please **check** the causes and

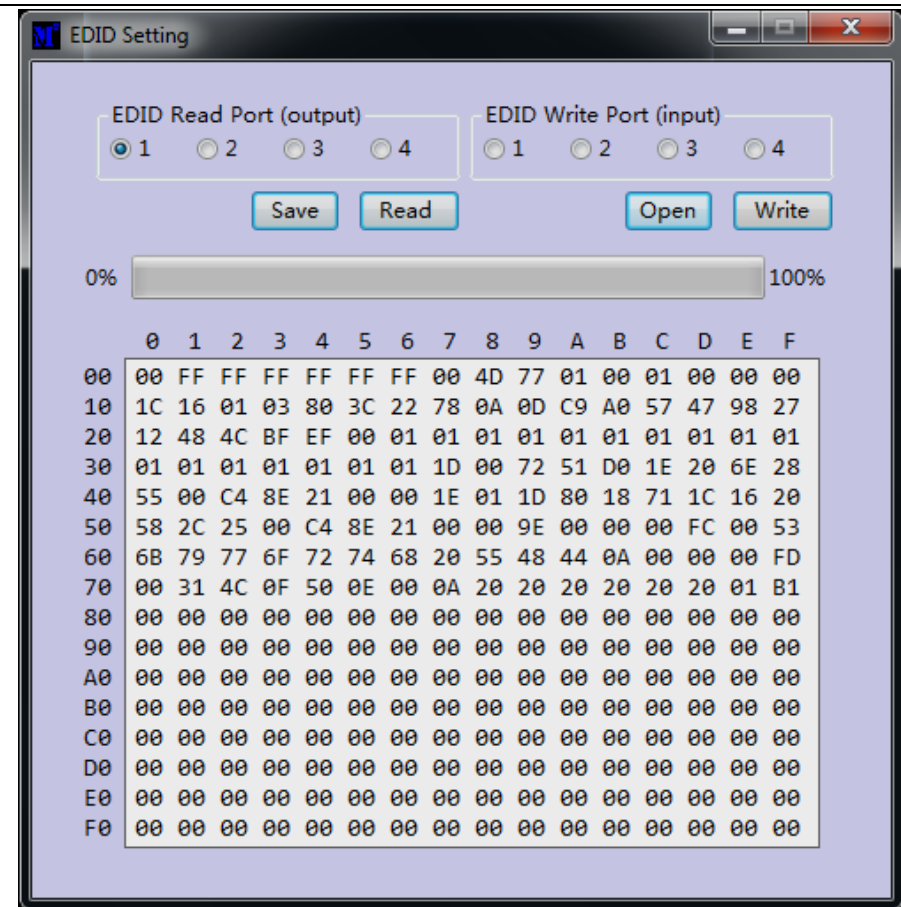
retry again according to the software's hint. Usually, the causes may be as follows: No COM port connected to the computer, the COM port is used by other programmes, the matrix is not working well, and so on.

- 6) The **ComboBox** on the right of Port shows the COM ports that connected to the computer. If there's no COM port connected, it will show COM0, COM1...COM9.
- 7) The **button** on the right of Status indicates the current status of connection. You can switch the connection status by pressing this button.



Instruction of control operation of matrix:

- 1) Click the **rectangle** which is on the right of output port and on the bottom of the input port can switch output port's input source. And the rectangle's color will change to **blue** if the operation is successful. Otherwise, you can try it again.
- 2) **All set**: Click the drop-down menu to select a input source which will be routed to all HDMI output port.
- 3) **Recall**: The drop-down menu to recall the item N routing
- 4) **Saveas**: The drop-down menu to save the current routing status to item N status.
- 5) **Reset**: Reset the matrix configuration.
- 8) **EDID**: You can open or close the IDID control window by clicking this button. The instruction of operation of EDID control is as below:
 EDID Read Port (Output) : Select a output port which will do EDID operation.
 EDID Write Port (Input) : Select input ports which will do EDID operation.
Save : Save IDID data to file on your computer.
Open : Open and show a file of EDID data.
Read : Read EDID data from the selected HDMI port(output).
Write : Write EDID data to the selected HDMI port(input).



Note:

When read EDID from the Sinks, please make sure the cable between Matrix and Sinks (such as TV) connected well, and can normally display.

HDTVIM44 Parameters

Electrical parameters	
Interface	HDMI-A
HDMI version	HDMI1.4
Bandwidth	300MHz
Resolution	Up to 4Kx2K@30Hz
Clock Jitter	<0.15 Tbit (1080p@60)
RiseTime	<0.3Tbit (20%--80%)
RiseTime	<0.3Tbit (20%--80%)
Transmission Delay	5ns
Amplitude	T.M.D.S +/- 0.4Vpp
Differential impedance	100±15ohm
RS232 control	
Baud rate and protocol	Baud rate: 9600,data bit: 8, stop bit: 1,No parity checking
Power	
Max Consumption	10W
Adapter	12V/3A
Matrix Mechanical dimensions	
Size(mm)	300(L)X130(W)X32(H)
Weight	1.4Kg

Accessories List

Item	Quantity
Power Adapter 12V/3A	1
Remote	1
User Manual CD	1
Matrix	1

Troubleshooting and Maintenance

- 1) When flicker or flash point on the screen, please check if the connection is reliable, whether the source is a standby or replace the HDMI cable
- 2) When user can 't control matrix with PC, please check if com port No. is wrong settle on the PC tool
- 3) When the POWER led not lighted and no picture displayed,please check if the power adapter connected well and if the power switch in OFF.