



**TAURI**™

## Temperature-Check Tablets

**1 second scan from 3ft with +/- 0.5°F accuracy**

**TTS-15** 15.6" panel  
See inside for more sizes

Add an extra layer of protection to your facility and help protect your most valuable assets - your human assets.

Hospitality



Medical



Education



Corporate



Restaurant



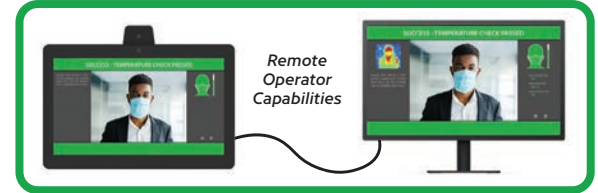
Airport



Retail



# Increase Safety with a quick temperature check



To ensure that individuals entering a location are not running a high temperature, Aurora introduces the new TAURI infrared temperature sensor/detector. It provides alerts when a person is running a high temperature within 1 second.

The system uses an advanced algorithm for detecting and calculating heat signatures. Based on technology developed in Germany, the highly accurate auto-calibrated sensor measures with a tolerance of +/- 0.3 degrees Celsius (+/- 0.5 degrees Fahrenheit). TAURI tablets also come with a 2-year warranty.

## Why a temperature sensor?

- Provides the first layer of screening protection
- More hygienic with non-touch infrared technology
- Multiple devices can be monitored by a single user



TTS-10  
10.1" panel

TTS-15  
15.6" panel

TTS-21  
21.5" panel

## Full Features Offered

1. Customize the interface experience for the user and operator
2. Digital signage for still and/or video playback
3. Messaging and audible prompts\*
4. Snapshots and thermal result email alerts
5. Automate entry or other devices; interface into nearly all security or medical systems\*
6. Ability to monitor multiple Tauri® tablets simultaneously from one interface
7. Database storage: locally or remotely\*
8. People Counting
9. Hand gesture control to utilize screen content for questionnaires or identity recognition\*
10. QR Code Scanning\*
11. Real-time streaming camera and thermal temperature reading
12. Facial Detection
13. Face Mask Detection
14. Customized Flagging\*

\*Requires basic JavaScript programming and/or Core Studio® software (included) available for full customization



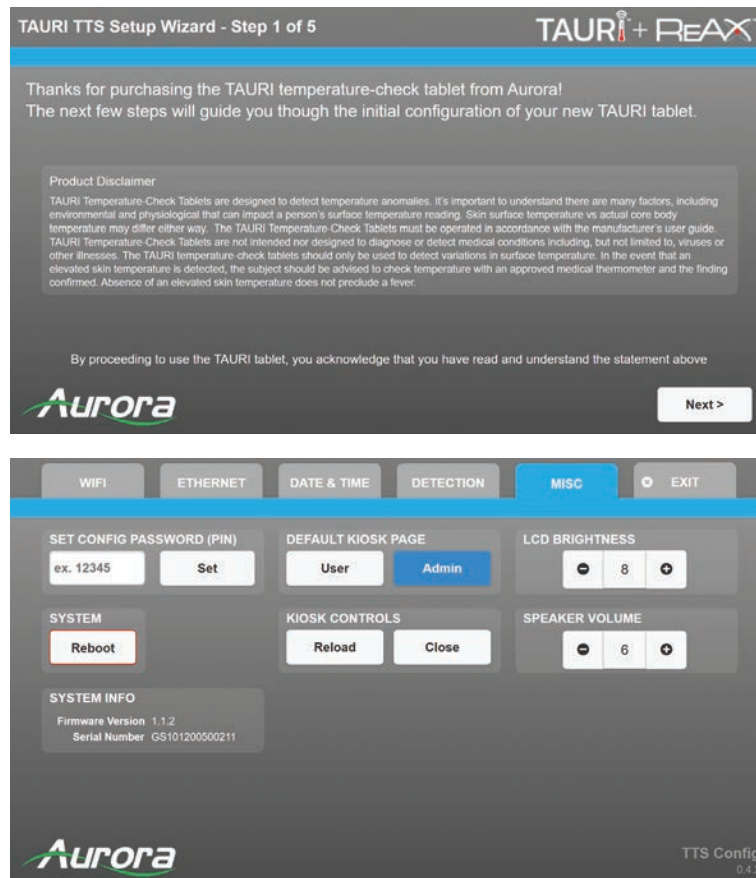
TAURI (patents pending) is a partnership between Aurora and GloryStar

The TAURI Temperature-Check Tablets are designed to detect temperature anomalies. It's important to understand there are many factors, including environmental and physiological that can impact a person's surface temperature reading. Skin surface temperature vs actual core body temperature may differ either way. The TAURI Temperature-Check Tablets must be operated in accordance with the manufacturer's user guide. TAURI Temperature-Check Tablets are not intended nor designed to diagnose or detect medical conditions including, but not limited to, viruses or other illnesses. The TAURI temperature-check tablets should only be used to detect variations in surface temperature. In the event that an elevated skin temperature is detected, the subject should be advised to check temperature with an approved medical thermometer and the finding confirmed. Absence of an elevated skin temperature does not preclude a fever.

# Set Up Wizard

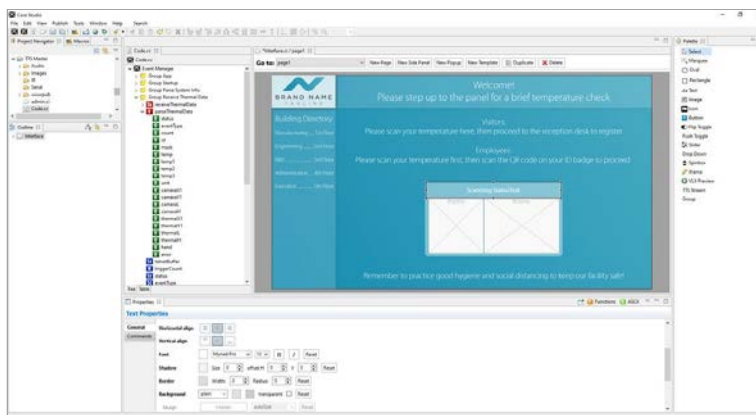
A Tool Provided to Customize Your Experience

## Sample Live Screenshots



# Core Studio Software

Included with Tauri (Sample Screenshot)



## TAURI: Key Specifications\*

\*For more specifications and details, please see: [www.auroramm.com/tauri](http://www.auroramm.com/tauri)

		TTS-10	TTS-15	TTS-21
Screen Size		10.1"	15.6"	21.5"
Dimensions	Size (WxHxD)	10.1 x 6.5 x 1.3"	15.6 x 8.8 x 1.2"	21.5 x 12.8 x 1.875"
	Product Weight	1.5 lbs	3.08 lbs	8.38 lbs
	Box Size	15.16 x 8.74 x 2.56"	17.48 x 13.7 x 4.4"	22.9 x 17.4 x 4.5"

### Options:

- APS-1 adjustable pole stand with weighted base
- WMT-1 wall mount
- DTM-1/DTM-2 desktop stands



WMT-1 wall mount



DTM-1 desktop mount



DTM-2 desktop mount

## Q&A

Q: How accurate is the infrared sensor?

A: +/- 0.5 degrees Fahrenheit.

Q: What is the scan distance?

A: 1.6 to 3.3 feet.

Q: What is the temperature detection speed?

A: 1 second.

Q: How many people can it detect one time?

A: 1 person can be scanned at a time.

Q: Is there an option to store the data of people checked? If yes, how far back?

A: Currently no.

Q: Is the unit able to detect people of different heights (e.g. children, adults 3' to 6.5')?

A: There's a visible sensor and a camera that will show your face on the LCD screen. Within the effective scanning range, the sensor should pick up the face, though in extreme cases the tablet might need to be adjusted.

Q: Are there any data/tests available regarding the accuracy of this unit?

A: The accuracy is at 0.5 degrees Fahrenheit which is provided by our component manufacturer located in Germany. For the past few months this module has been implemented with projects for access control.

Q: Can the sensor be affixed to a door, away from the tablet that collects data?

A: The sensor must be connected to the tablet at this time.

Q: How does the alert message work? Are there display and sound alerts?

A: On the display screen, it will show the person's face and current temperature. If it senses a temperature higher than what has been set as normal, the tablet will show red and emit an alert sound.

Q: Will the system detect objects and/or animals?

A: The system is designed to only detect people.

Q: Does the temperature sensor need to be calibrated?

A: No, the sensor is initially calibrated at the factory and will auto-calibrate once deployed.

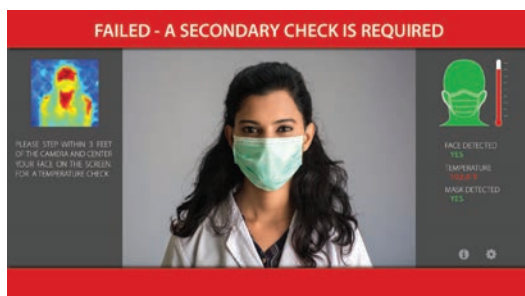
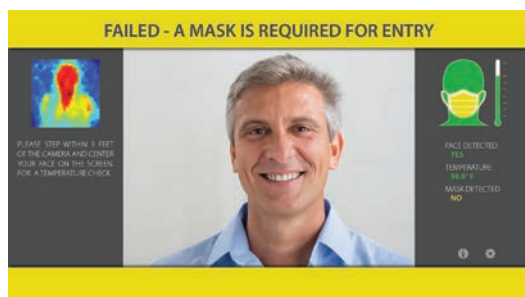
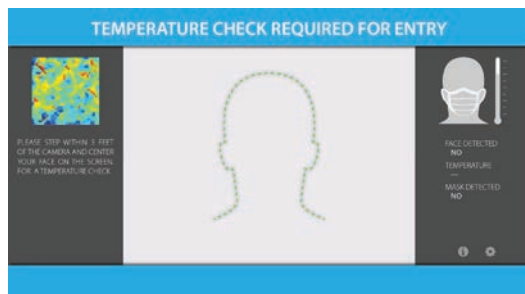


APS-1 pole stand

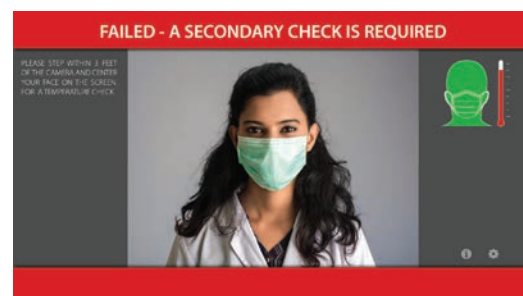
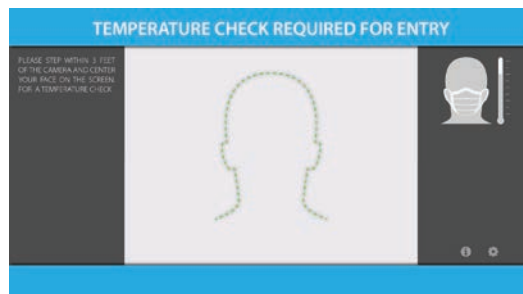


# The User Experience

## Operator View:



## User View:



*Customized View to enhance confidentiality and security.*