

IP CAMERA CONFIGURATION IN ENVIROMUX WEB INTERFACE

The IP cameras in the chart below can be used to take snapshots and attach them to alert messages sent to users. All of the below listed models are compatible with the E-16D/5D/2D and the E-MICRO-T(RHP) (requires firmware version 3.11 and later).

The images that are attached will be at the default resolution for each camera:

Model	Default Resolution	Current Firmware Version
E-IPCAM-WN	640x480	v1.12.0.3
E-IPCAM-WHNPT	1280x720	v11.6.5.1.1
E-IPCAM-WHNO-V2	1920x1080	v10.3.141.1
E-IPCAM-WHNPT-V3	1280x720	v7.3.11.1.1
E-IPCAM-SWHNO	1920x1080	v10.6.7.1.2-20170920
E-IPCAM-DHNPO-V2(P)	1920X1080	v5.4.5 build 170124

For model E-IPCAM-WN ONLY:

To configure the IP camera to capture this image, enter the following in the “**Image URL**” box on the “**Configure IP Cameras**” page of the ENVIROMUX Web Interface.

<IP ADDRESS>/image/jpeg.cgi



IP Camera #6

Add to View	<input checked="" type="checkbox"/>	<small>Enable this camera in the View page</small>
Name	<input type="text"/>	<small>Name of the IP camera</small>
Image URL	<input type="text" value="92.168.3.15/image/jpeg.cgi"/>	<small>Full path of the image file of the IP camera</small>
IP Address	<input type="text"/>	<small>IP address of the IP camera</small>
Refresh Rate (x100 msec)	<input type="text" value="1"/>	<small>Refresh rate of the image in hundreds of milliseconds</small>

For model E-IPCAM-WHNPT-V3 and E-IPCAM-WHNO-V2 ONLY:

To configure the IP camera to capture this image, enter the following in the “**Image URL**” box on the “**Configure IP Cameras**” page of the ENVIROMUX Web Interface.

`<IP ADDRESS>/cgi-bin/hi3510/tmpfs/auto.jpg`

Be sure to put a checkmark in “**Enable HTTP Auth**”, enter the HTTP Auth Username (default is “admin”) and enter the password you assigned when you setup the camera (default is "admin").

Configure IP Cameras

IP Camera #1	
Add to View	<input checked="" type="checkbox"/> Enable this camera in the View page
Name	<input type="text"/> Name of the IP camera
Image URL	<input type="text" value="192.168.3.9/cgi-bin/hi"/> Full path of the image file of the IP camera
IP Address	<input type="text" value="192.168.3.9"/> IP address of the IP camera
Refresh Rate (x100 msec)	<input type="text" value="5"/> Refresh rate of the image in hundreds of milliseconds
Enable HTTP Auth	<input checked="" type="checkbox"/> Use HTTP Authorization to access this camera
Enable Digest Access	<input type="checkbox"/> Use Digest Access Authentication to access this camera
HTTP Auth Username	<input type="text" value="admin"/> Username to be used in HTTP Authorization
HTTP Auth Password	<input type="text" value="admin"/> Password to be used in HTTP Authorization

For model E-IPCAM-DHNPO-V2(P) (Model -V2P includes a power supply)

To configure the IP camera to capture an image, enter the following in the “**Image URL**” box on the “**Configure IP Cameras**” page of the ENVIROMUX Web Interface.

`<IP ADDRESS>/streaming/channels/1/picture`

Be sure to put a checkmark in “**Enable HTTP Auth**”, enter the HTTP Auth Username (default is “admin”) and enter the password you assigned when you setup the camera (there is no default, you must assign this).

Note: Be sure to set the Refresh Rate for this camera at 10 or above.

For model E-IPCAM-SWHNO and E-IPCAM-WHNPT:

To configure the IP camera to capture this image, enter the following in the **“Image URL”** box on the **“Configure IP Cameras”** page of the ENVIROMUX Web Interface.

<IP ADDRESS>/tmpfs/auto.jpg

Be sure to put a checkmark in **“Enable HTTP Auth”**, enter the HTTP Auth Username (default is “admin”) and enter the password you assigned when you setup the camera (default is "admin").

Configure IP Cameras



IP Camera #1	
Add to View	<input checked="" type="checkbox"/> Enable this camera in the View page
Name	<input type="text"/> Name of the IP camera
Image URL	192.168.3.9/tmpfs/auto.j Full path of the image file of the IP camera
IP Address	192.168.3.9 IP address of the IP camera
Refresh Rate (x100 msec)	2 Refresh rate of the image in hundreds of milliseconds
Enable HTTP Auth	<input checked="" type="checkbox"/> Use HTTP Authorization to access this camera
Enable Digest Access	<input type="checkbox"/> Use Digest Access Authentication to access this camera
HTTP Auth Username	admin Username to be used in HTTP Authorization
HTTP Auth Password	admin Password to be used in HTTP Authorization

Access Individual Camera Settings

E-IPCAM-WN

To access the **E-IPCAM-WN** web interface to change its settings:

1. Connect the AC adapter to the camera to power it ON.
2. Connect an Ethernet cable between the camera and an available port on a router (connected to your network), or directly to a PC.
3. Open a browser (Internet Explorer, Firefox, etc) on that PC and enter the default IP **192.168.0.20**.
4. Enter the user name "**admin**". Leave the password field blank.
5. Click "OK".



E-IPCAM-DHNPO-V2(P)

To access the **E-IPCAM-DHNPO-V2** web interface to change its settings:

1. Connect the camera to a POE connected Ethernet cable to power it ON, or if it is a E-IPCAM-DHNPO-V2P, connect the supplied 12VDC power supply. The Ethernet cable must be connected to the same local network your PC is connected to.

Note: By default, this camera obtains an IP address from a DHCP server on the local network. To find the IP address of the camera, consult the DHCP client list on the DHCP server of your wireless router or use the search tool (SADP.exe available from our [website](#)) and follow the instructions. (See image at bottom of page.)

2. Open a browser (Internet Explorer, Firefox, etc) on that PC and enter the IP address found with the search tool. If no DHCP server exists, the default IP will be **192.168.1.64**.

3. The first time you do this, the Activation window will pop up. Assign a password. The password must contain a minimum of 8 characters, including upper case letters, lower case letters, numbers, and special characters. Be sure to make note of it after entering it. Then click "OK".

User Name admin

Password ❌

Valid password range [8-16]. You can use a combination of numbers, lowercase, uppercase and special character for your password with at least two kinds of them contained.

Confirm

OK

If you are using the SADP discovery tool to identify the IP address of the **E-IPCAM-DHNPO-V2**, you will be able to assign the password from the discovery tool window (below).

Total number of online devices: 2

ID	Device Type	Status	IPv4 Address	Port	Software Version	IPv4 Gateway	HTTP Port	Device Serial No.
001	DS-2CD2125FWD-I	Inactive	192.168.1.64	8000	V5.4.5build 1701...	192.168.1.1	80	DS-2CD2125FWD-I201706
002	DS-2CD2122FWD-IS	Active	192.168.3.113	8000	V5.5.0build 1707...	192.168.3.3	80	DS-2CD2122FWD-IS20180

Export Refresh

Activate the Device

The device is not activated.

You can modify the network parameters after the device activation.

Activate Now

New Password:

Confirm Password:

Enable Hi-Connect

Activate

4. After the initial login and password assignment, the login screen will look like this.



5. Enter the username and assigned password. Then click “Login”.
You now have access to all internal settings of the camera.

E-IPCAM-SWHNO (and E-IPCAM-WHNPT)

To access the **E-IPCAM-SWHNO** web interface to change its settings:

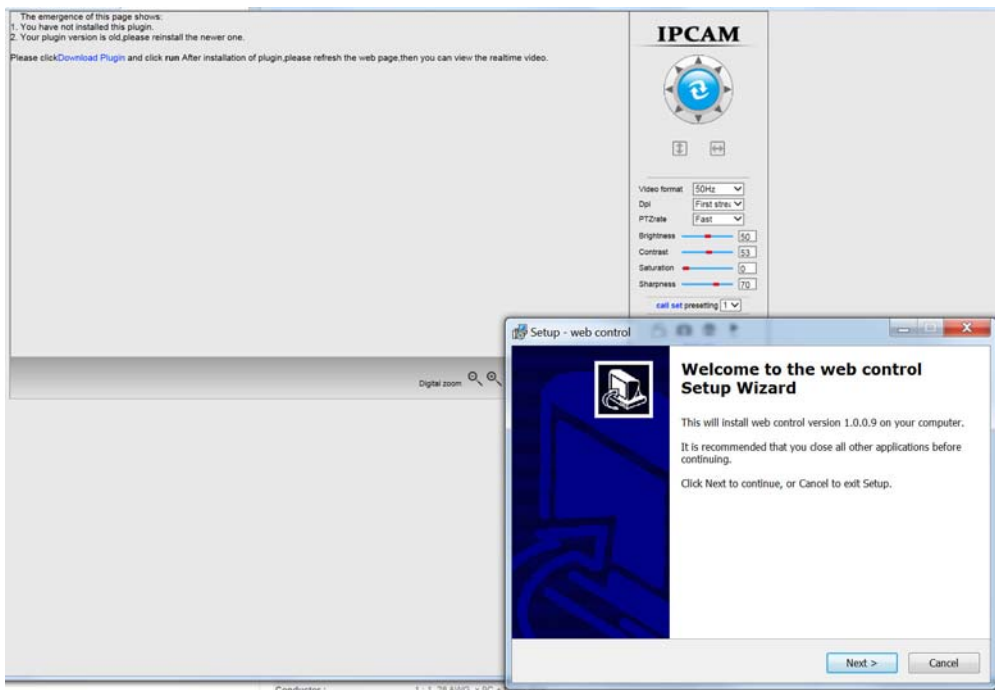
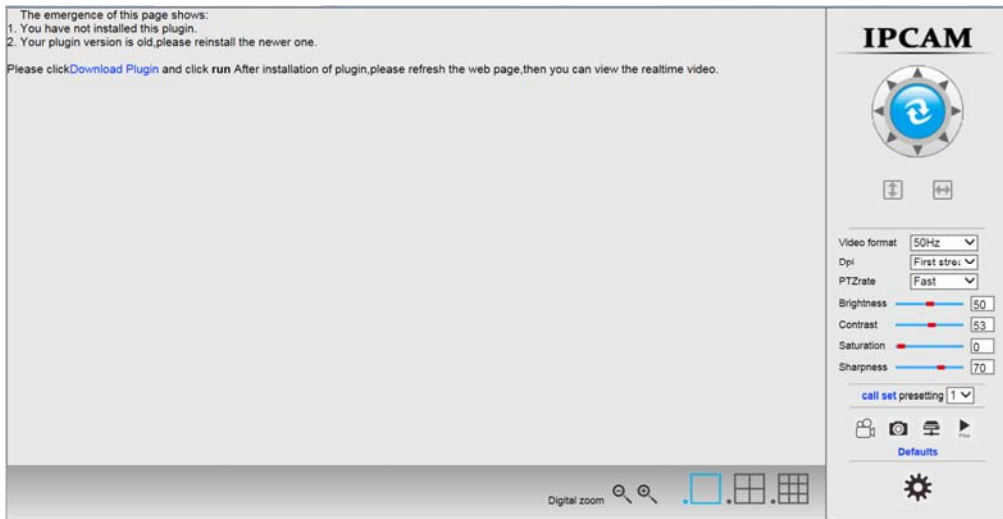
1. Connect the AC adapter to the camera to power it ON. Wait 30 seconds.
2. Connect an Ethernet cable between the camera and an available port on a router (connected to your network), or directly to a PC.

Note: By default, this camera obtains an IP address from a DHCP server on the local network. To find the IP address of the camera, consult the DHCP client list on the DHCP server of your wireless router or use the discovery tool (HiP2P Client_Setup_v6.0.3.2.exe) and follow the instructions found in the e-ipcam-swhno.zip available on our [website](#). However, if there is no DHCP server available, or if you are connecting the camera directly with your PC without another device in-between, the static default IP address of this camera is 192.168.1.88.

3. Open a browser (Internet Explorer, Firefox, etc) on that PC and enter the default IP **192.168.1.88**.
4. The login window will pop up.
5. Enter the default user name "admin" and default password "admin" (all lowercase letters).
6. Click "OK".
7. You will be presented with a login selection method. For this installation, select "Intelligent mode, suitable for IE, Google, Firefox browser".



8. At the next screen you will be prompted to install the plugin to your browser. Click "Download Plugin" and follow the prompts for installation.



9. Once the plugin is installed, you may need to refresh your connection. Enter the IP address into the URL bar of the browser again.

You now have access to all internal settings of the camera.

E-IPCAM-WHNO-V2 and E-IPCAM-WHNPT-V3

To access the **E-IPCAM-WHNO-V2** or **E-IPCAM-WHNPT-V3** web interface to change its settings:

1. Connect the AC adapter to the camera to power it ON. Wait 30 seconds.
2. Connect an Ethernet cable between the camera and an available port on a router (connected to your network), or directly to a PC.

Note: By default, this camera obtains an IP address from a DHCP server on the local network. To find the IP address of the camera, consult the DHCP client list on the DHCP server of your wireless router or use the discovery tool found in the e-ipcaw-whno-v2.zip available on our [website](#). However, if there is no DHCP server available, or if you are connecting the camera directly with your PC without another device in-between, the static default IP address of this camera is 192.168.1.88.

3. Open a browser (Internet Explorer, Firefox, etc) on that PC and enter the default IP **192.168.1.88**.
4. The login window will pop up.
5. Enter the default user name "admin" and default password "admin" (all lowercase letters).
6. Click "Login".



When opening the camera's interface, the browser will prompt you to install a plugin. The plugin is necessary to get the camera's video. Click the install link to download the plugin, and install it manually. If the browser prompts you to allow the plugin to work on the computer, hit "Allow" to ensure the plugin can run successfully.

You now have access to all internal settings of the camera.

If you make changes to the network settings, you will have to reset the IP camera and you will be forced to change the password. Please select a password that is at least 8 characters long, and include a combination of uppercase letters, lowercase letters, and numbers. Be sure to make note of the new password.

