

ST-C6USB4K18GB-HDBT230

4K 18Gbps HDMI USB KVM Extender over HDBase-T

User manual



Thank you for purchasing this product. For optimum performance and safety, please read the instructions carefully and keep the manual for future reference.

Please read below safety instructions carefully before installation and operation:

1. Please pay attention to all the warnings and hints on this device.
2. Do not expose this unit to rain, moisture and liquid.
3. Do not put any stuff into the device.
4. Do not attempt to repair this device.
5. Shut off power and make sure environment is safe before installation.
6. Do not plug-in/out the connected cables while in use.
7. Make sure to match specifications if using alternative DC adapters.

• **Introduction**

This HDBaseT single network cable KVM extender transmits HDMI signal up to 70 meters over cat6 fluently and clearly. It is lossless in signal and supports 3D, 24bits deep color, CEC, HDCP and ultra HD 4KX2K@60Hz. It allows access to a computer system from a remote console by USB connectors (USB keyboard and mouse). It is perfect for factory and construction sites, or any type of installation where the console needs to be in a conveniently accessible location. It is also useful for control and security purposes. It's a perfect solution for audio&video transmission in applications of HD conference system, HD multimedia education system, HD digital advertising and signage etc.

• Features

1. Support bi-directional IR pass back.
2. Uncompressed HDMI video signal.
3. Supported resolution is up to ultra HD 4Kx2K@60Hz (3840x2160).
4. Support HDBaseT 2.0, HDCP 2.2 ,CEC, 24bit deep color.
5. Support LPCM, DTS-HD and Dolby True HD audio.
6. Support KVM function, remote control conveniently
7. Transmit 4Kx2K@60Hz signal over cat6 up to 70 meters (230 feet).
8. Sender is powered through network cable from Reciever. The set only requires power supply connection at the Receiver.

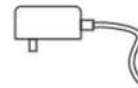
• Package Contents



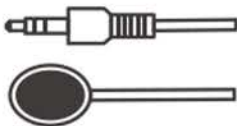
TX Sender x1pc



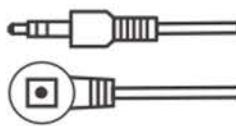
RX Receiver x1pc



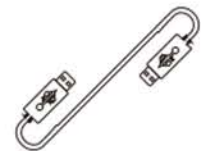
DC12V/2A
x1pc



IR blaster extension
cable x2pcs



IR receiver extension
cable x2pcs



USB Cable x 1pc

• Installation Requirements

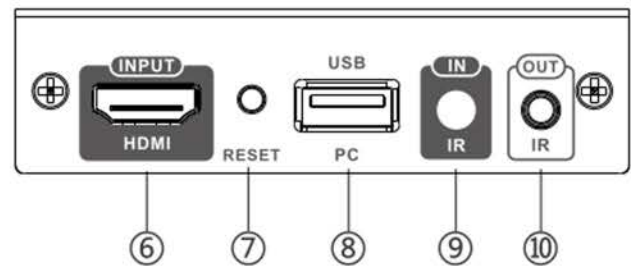
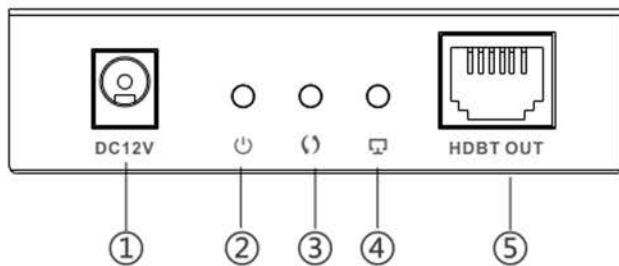
1. HDMI source devices with HDMI OUTPUT interface: DVD, PS3, STB, PC etc.
2. Display devices with HDMI INPUT port: SDTV, HDTV, projector

3. Network cables :

UTP/STP Cat6/Cat6A/Cat7 network cables, which follow the standard of IEEE-568B.

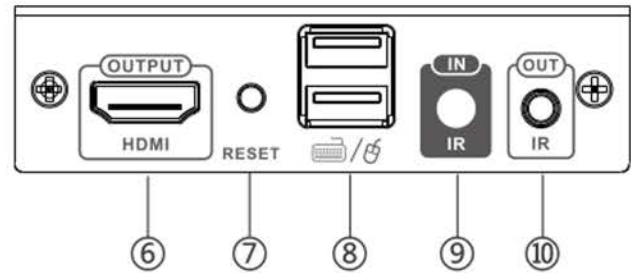
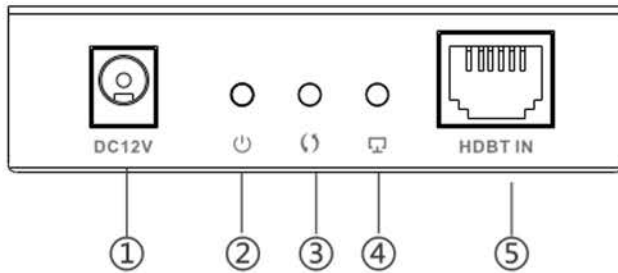
• Panel Description

1. TX Sender (Local Unit)



①	Power input	(Optional)Connect with DC12V/2A power adapter
②	Power indicator	LED indicator turn on when power on
③	Data transmission indicator	It turns on when the transmitter unit and the receiver unit connect well with each other, and it flashes when there is no transmission between the transmitter unit and the receiver unit.
④	Connection indicator	It flashes when the receiver unit connected well with the HDMI display device, and it turns off when no transmission between the receiver unit and the display device.
⑤	HDBT Output	To connect with receiver by network cable
⑥	HDMI input	Connect with HDMI source device
⑦	Reset button	Press for restarting the unit
⑧	USB port	To connect with PC
⑨	IR receiver extension cable interface	Connect with IR receiver extension cable. Please make sure the remote control is within the required range of IR receiver
⑩	IR blaster extension cable interface	Connect with IR blaster extension cable. Please put the IR blaster close to source device to best transmit the IR signal from receiver

2. RX Receiver (Remote Unit)



①	Power input	Connect with DC12V/2A power adapter
②	Power indicator	LED indicator turn on when power on
③	Data transmission indicator	It turns on when the transmitter unit and the receiver unit connect well with each other, and it flashes when there is no transmission between the transmitter unit and the receiver unit.
④	Connection indicator	It flashes when the receiver unit connected well with the HDMI display device, and it turns off when no transmission between the receiver unit and the display device.
⑤	HDBT input	To connect with transmitter by network cable
⑥	HDMI output	Connect with HDMI display device
⑦	Reset button	Press for restarting the unit
⑧	USB port	To connect with keyboard/mouse
⑨	IR receiver extension cable interface	Connect with IR receiver extension cable. Please make sure the remote control is within the required range of IR receiver
⑩	IR blaster extension cable interface	Connect with IR blaster extension cable. Please put the IR blaster close to source device to best transmit the IR signal from receiver

• Installation Procedures

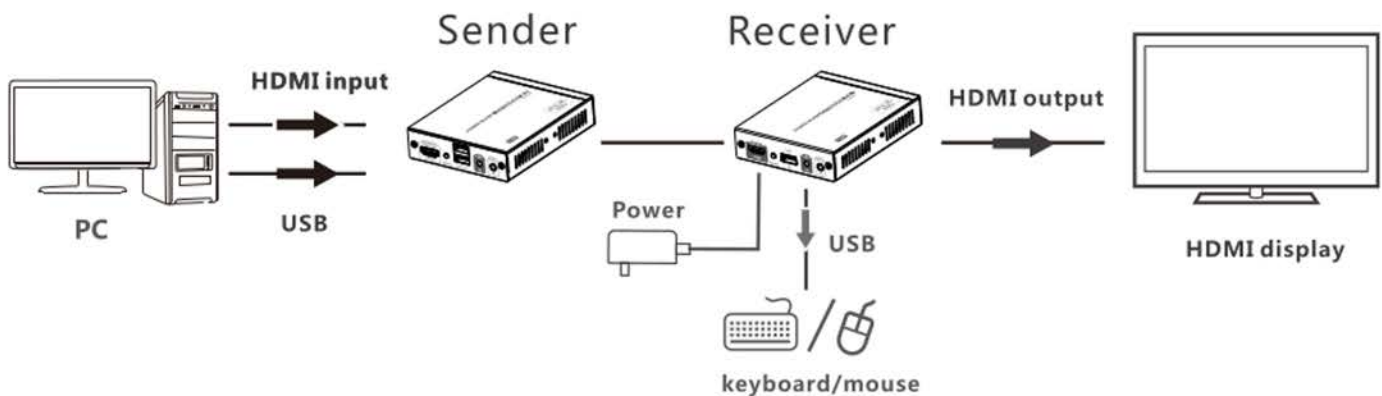
1. To make a Cat6/6A/7 network cable

Follow the standard of IEEE-568B:



1	white and orange	4	blue	7	white and brown
2	orange	5	white and blue	8	brown
3	white and green	6	green		

2. Connections



3. Bi-directional IR pass back

- 1) It supports bi-directional IR pass back. User can control DVD at RX end and control TV at TX end.
- 2) If control at RX end, please connect IR blaster extension cable with IR OUT of TX and connect IR receiver extension cable with IR IN of RX. If control at TX end, please connect IR receiver extension cable with IR IN of TX and connect IR blaster extension cable with IR OUT of RX.

• FAQ

Q: No output on screen?

A: 1) First , please check and make sure the power supply is connected well. Then, check and make sure all cables are connected correctly.

2)Please check and make sure the right HDMI input port of the TV/ screen has been chosen.

3)Please check and make sure there is HDMI signal to be fed into transmitter unit, and check and make sure the receiver unit has been connected well with the display device.

Q: Data transmission indicator flashes and no output?

A: Check and make sure the HDMI display device has been switched to the right HDMI input channel.

Q: Connection indicator stays off?

A: Check whether the TX's HDMI IN has signal input and make sure RX's OUT is well connected with HDMI display.

Q: Output image with "snow" (interference)?

A: Change the HDMI cable between the transmitter unit and the source device . It would be best to use a shorter HDMI cable for testing. Make sure HDMI cable is of high quality.

Specifications	
Local Unit	
Compatibility	USB Computer or HDTV Video Source with HDMI output
Platforms supported	Windows 2000/XP/Vista/7/8/10, Windows Server 2000/2003/2008/2012/2016, Solaris, Linux, FreeBSD, and MAC OS 9/10.
Connections	1- HDMI Female, 1- USB Type A Female; 2- 3.5mm Jacks, 1- RJ45 Female
Remote Unit	
Resolutions supported	Ultra-HD 4Kx2K 60Hz 4:4:4 resolutions (3840x2160 @30/50/60Hz); HDTV resolutions to 1080p
Connections	1- HDMI Female, 1- USB Type A Female; 2- 3.5mm Jacks, 1- RJ45 Female
HDCP Supported	HDCP 2.2
Max. data rate	18Gbps
General	
Dimensions WxDxH	3.43x4.31x0.92 in. (87x109.5x23.4mm)
Operating Temperature	32 to 131°F (0 to 55°C).
Storage Temperature	-14 to 158°F (-10 to 70°C).
Relative Humidity	0 to 90% non-condensing RH.
HDMI Signal	Support HDMI2.0, HDCP2.2, CEC and 24bits deep color
Audio Support	LPCM, DTS Digital, Dolby Digital
Power	Local Unit: Powered by CAT cable connection to Remote Unit Remote Unit: AC Adapter- Input: 100 to 240 VAC at 50 or 60 Hz via AC adapter / Output: 12VDC, 2A
Approvals	CE,FCC,RoHS
Max. Distance	230 feet (70 meters) over CAT6/6a/7 cable.