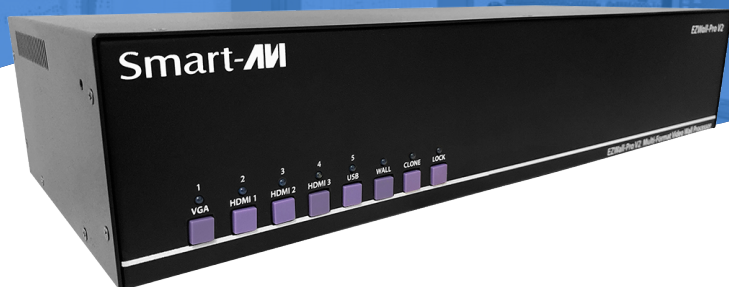


# EZWall-Pro 3x3 V2

Multi-Format Video Wall Processor



## INSTALLATION MANUAL



**Smart-AVI**  
SMART AUDIO VIDEO INNOVATION

## TABLE OF CONTENTS

TABLE OF CONTENTS / WHAT'S IN THE BOX?	2
INTRODUCTION	3
FEATURES	3
APPLICATIONS	3
TECHNICAL SPECIFICATIONS	4
HARDWARE INSTALLATION	5 - 6
FRONT PANEL CONTROL	6
ESTABLISHING AN RS-232 CONNECTION	7
IR REMOTE CONTROL	8
CONTROL VIA ETHERNET	9 - 11
FIRMWARE UPDATE	12 - 14
LIMITED WARRANTY STATEMENT	15

## WHAT'S IN THE BOX?

MODEL NUMBER	DESCRIPTION
EZW3X3V2-S	Multi-Format Video Wall Processor. Includes: [EZW3X3 and (CCPWR06)]



## **INTRODUCTION**

Thank you for choosing Smart-AVI EZWall-Pro for your video wall solution. The EZWall-Pro 3x3 V2 offers top-notch HD-DVI output for five different type of signal inputs. Create striking 3x3 wall displays easily with simple signal-switching and flexible connectivity. The EZWall-Pro V2 even features a fully-integrated USB media player, perfect for populating your displays with enticing digital content.

Capable of expanding any supported video input to nine large-scale screens at 1080p, the EZWall-Pro show-cases stunning picture quality and SmartAVI products' signature ease of use. In this guide, you will learn how to install and optimize your experience with the EZWall-Pro using basic steps. We will cover setting the hard-ware up, activating and connecting your systems, and offer helpful tips on how to best use EZWall-Pro V2's excellent selection of picture modes to enhance your video wall. Congratulations again on choosing EZWall-Pro V2 and SmartAVI as your go-to video wall solution!

## **FEATURES:**

- 9 screen (3x3) multi-Layout, multi-format video wall controller
- Outputs: (12) DVI single-link
- Inputs: (3) HDMI, (1) RS-232, (1) VGA, (1) IR input
- Integrated USB Media Player for digital video, imagery and audio
- Internal EDID learning
- 1080p (1920x1080 @ 60Hz) Full HD resolution output
- No additional hardware or software required
- Supports control via Front Panel Buttons
- Supports control via IR Remote control
- Supports control via RS-232
- Supports control via TCP/IP
- HDCP and HDMI 1.4 compliant

## **APPLICATIONS:**

- Corporate or Educational Presentations
- Airport Installations
- Wall Displays
- Digital Signage
- Dealer Rooms
- Control Rooms
- Shopping Centers
- Security
- Point-of-Sale
- Entertainment Venues
- Corporate Lobbies
- Restaurants

**TECHNICAL SPECIFICATIONS:**

VIDEO	
Output Resolutions	Up to 1080P (1920x1080@60Hz)
Input Resolutions	Up to 1080P (1920x1080)
Input Video Signal	1.2 volts
Input DDC Signal	5 volts
Outputs	(12) DVI-D
DVI Format	Single-link
Inputs	(3) HDMI, (1) VGA, (1) IR, (1) RS-232, (1) USB 2.0 Type A, (1) RJ-45
HDCP Compliance	1.0/2.0
Audio	(1) 3.5mm input, (1) 3.5mm output
CONTROL	
Front Panel	Tactile Switches
RS-232	DB9 Female, 115200 bps, N, 8 1, No flow control
TCP/IP	RJ-45
IR Remote Control	EZ-RMT (NEC 38 KHz)
OTHER	
Power	Internal 100-240 VAC
Dimensions	17.125" W x 3.625" H x 7.5" D
Weight	7.9 lbs.
USB MEDIA PLAYER	
Signal Type	USB 2.0, 1.1, and 1.0 (Type A)
Video Formats	MJPEG, MPEG-1, MPEG-2, MPEG-4, Vvid, DivX H.264
Max Resolution	1920x1080 @30fps
Max Data Rate	20 Mbps
Audio Formats*	MP3, WMA, AAC, MP2, PCM, AC3
Photo Max Resolutions	JPEG - 15360x8640, BMP - 9600x6400, PNG - 9600x6400
OTHER	Max TXT resolution: 1200x800
	Max ANSI/UNICODE GB/UTF8 file size: 1MB

\*PLEASE NOTE: EZWall-Pro 3x3 V2 only supports the primary formats listed above. Any unlisted formats are not compatible with EZWall-Pro 3x3 V2.





**HARDWARE INSTALLATION**

- 1. Position EZWall-Pro 3x3 V2 conveniently and keep it unplugged.
- 2. Connect DVI output cables between the EZWall-Pro 3x3 V2 and your video wall screens
- 3. Connect any input to their corresponding signal source (Blu-Ray player, computer, etc)
- 4. Optionally connect the IR receiver to the IR input jack at the back of the EZWall-Pro 3x3 V2.
- 5. Optionally connect an RS-232 cable from a PC to the RS-232 port of the unit for additional control.
- 6. Optionally connect an Ethernet cable to the EZWall-Pro for additional control over the internet (TCP/IP)
- 7. Turn on the EZWall-Pro 3x3 V2. 8. Wait for a few seconds for the unit to initialize

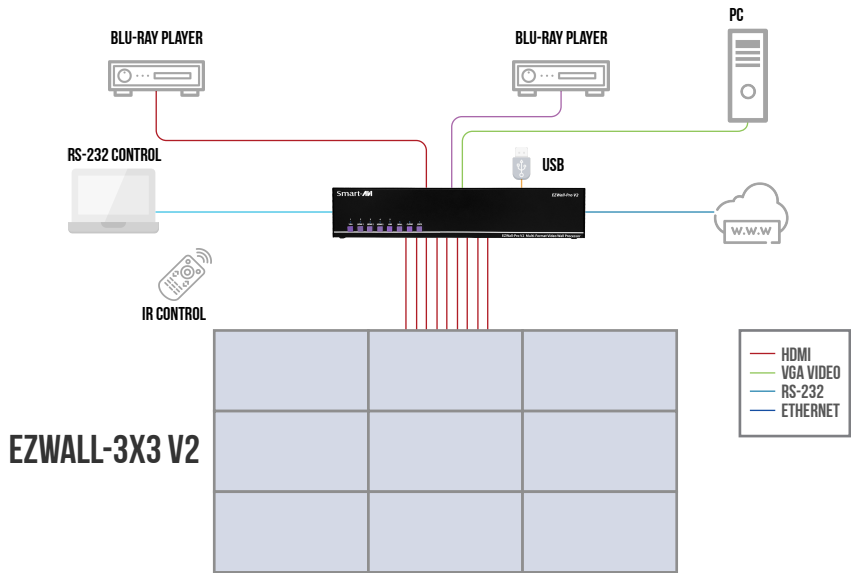
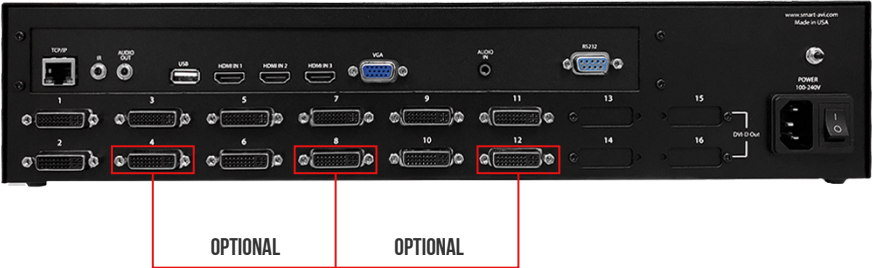


Figure 5-1



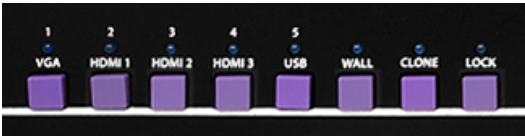
**HARDWARE INSTALLATION NOTICE:**

The Smart-AVI EZWall-Pro 3x3 V2 is available in several configurations; For this particular setup, ports 4, 8, and 12 are optional. The remaining ports; 1,3,5,7,9,11,2,6 and 10 are functional and are required for displaying nine large-scale screens.



**FRONT PANEL CONTROL**

To switch to Video Wall mode, press the WALL button. To switch to Clone mode, press the CLONE button.

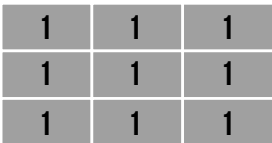


To switch between listed sources, press:

- 1. VGA
- 2. HDMI 1
- 3. HDMI 2
- 4. HDMI 3
- 5. USB \*
- 6. WALL MODE
- 7. CLONE MODE (See above)
- 8. LOCK (See above)



**VIDEO WALL MODE:**  
Users can project the input image across nine HD screens (3x3 configuration).



**CLONE MODE:**  
Users can route the input image to each display individually.

Figure 6-2

ESTABLISHING AN RS-232 CONNECTION

Before you start:

The EZWall-Pro 3x3 V2 may also be controlled via RS-232 commands. This feature requires that an RS-232 card is installed in your computer or a USB to RS-232 adapter. Check the RS-232 connections on your computer and the EZWall-Pro 3x3 V2 to determine if you need a male to male, female to female or male to female cable.

ESTABLISHING AN RS-232 CONNECTION

Establish a connection to the Smart-AVI device:

- 1. Connect an RS-232 cable to the RS-232 connector on the PC.
- 2. Connect the other end of the cable to the RS-232 port of the Smart-AVI device.
- 3. Use Windows Control Panel / Device Manager to identify the Com port number. See instructions and Figure 9-2 below.
- 4. Power on the device.

If you are using a USB to COM port adapter on a Windows PC and need to identify the COM port used, do the following:

- 1. Click on the start button.
  - 2. Click on Control Panel.
  - 3. Click on Device Manager.
  - 4. Click on the arrow next to Ports (COM & LPT).
- You should see the name of your adapter and the COM port number in use.

Setting up the Terminal Application:

Run the terminal client of your choice such as HyperTerminal or PuTTY.

Select the correct COM port on the PC.

Use the following connection settings: 115200, N, 8, 1, no flow control.

Once the connection is established type //? And hit enter. The EZWall-Pro 3x3 V2 should respond with a firmware version number and a list of available commands.

COMMANDS	DESCRIPTION
//?	Help (List of Commands)
//B	Boot EZWall-Pro 3x3 V2
//C	Clone display mode
//I#	Select input (# = 1=HDMI1, 2=HDMI2, 3=VGA, 4=AV1, 5=AV2, 6=YBPBR, 7=USB*)
//QA	Query IP Address
//QC	Query available video Configurations
//QM	Query current Mode
//QF	Query Firmware version
//QS	Query current Status
//V	Default Video Configuration (3X3)
//W	Wall
//Z	Sleep

\* USB player requires the IR Remote Control for navigation and media selection.



## IR REMOTE CONTROL

BUTTON	DESCRIPTION
WALL	Video Wall Mode
CLONE	Clone Mode
SOURCE	Pressing SOURCE followed by pressing a number will select the source port number.

## USB PLAYER REMOTE CONTROL\*\*

BUTTON	DESCRIPTION (Navigating Menus)
USB	Pressing USB followed by pressing number 1 or 2 will select the USB port.
[OK] Center Button	Enter or Select
CH+	Navigate UP
CH-	Navigate DOWN
◀ -	Navigate LEFT
▶ +	Navigate RIGHT
BUTTON	DESCRIPTION (Navigating while Displaying)
[OK] Center Button	Display Menu
[OK] Center Button (x2 while in menu)	Turn off Menu
◀ +	Volume Up
▶ -	Volume Down

\* Note that when not using all three displays the unused displays will be a clone of output #1

\*\* The USB player requires the IR Remote Control for navigation and media selection.

CONTROL VIA ETHERNET

EZWall-Pro 3x3 V2 TCP/ IP control is a feature that allows mode switching and other configurations to be controlled remotely via HTTP. Manage your EZWall-Pro 3x3 V2 with ease from anywhere in the world. First you must find the IP address for the EZWall-Pro 3x3 V2. Finder.exe (Smart IP-Finder) is conveniently available on our website; please visit [www.smartavi.com/helpful-links.html](http://www.smartavi.com/helpful-links.html) for this and our full list of compatible third-party software. Download and execute the IP address Finder software for your product. The EZWall-Pro 3x3 V2 and its IP address should appear in the display as shown in Figure 9-1.

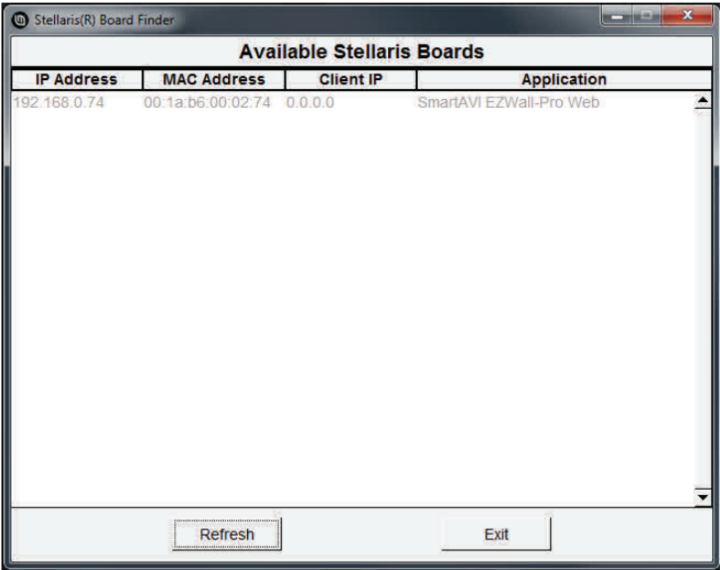


Figure 9-1

**CONTROL VIA ETHERNET (CONTINUED)**

Enter the IP address into a web browser of your choice. You should see the EZWall-Pro 3x3 Home/Welcome page. Click on the LOG IN tab in the top tool bar. Enter the User ID and Password in the Login page. The User ID and Password are case sensitive. User ID = admin, Password = 1234.

You can change the User ID and password by clicking the ADMINISTRATION button. See Figure 10-1

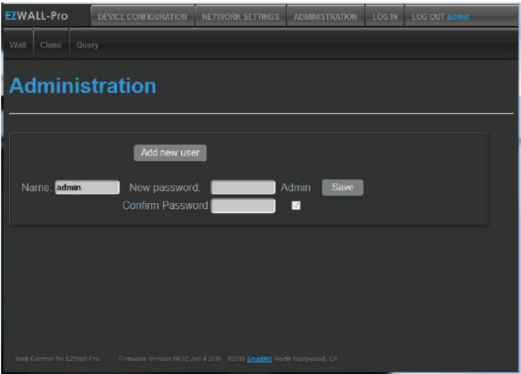


Figure 10-1

Click the Network Settings in the top tool-bar to configure your network settings. See Figure 10-2

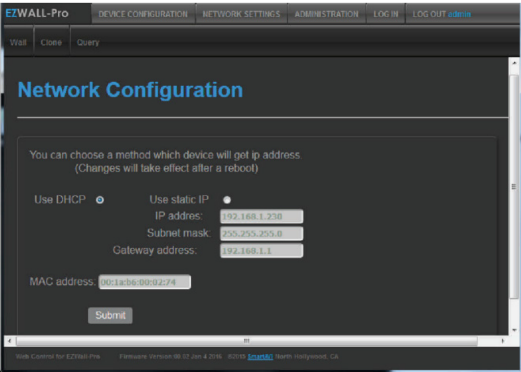


Figure 10-2

**CONTROL VIA ETHERNET (CONTINUED)**

You can use the internal web page to set the EZWall-Pro 3x3 V2 to Wall Mode or Clone Mode and set the desired source\*. See Figure 11-1.

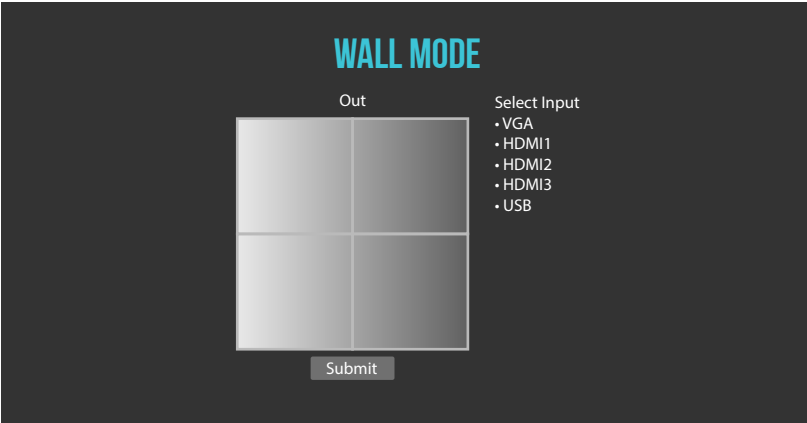
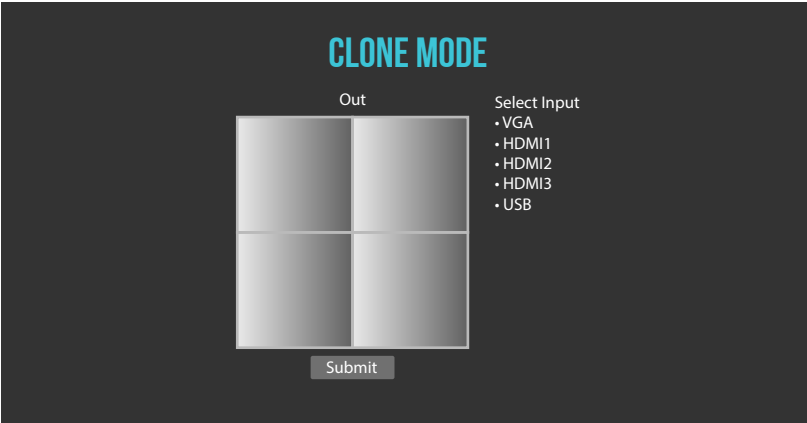


Figure 11-1



\* USB player requires the IR Remote Control for navigation and media selection.

## FIRMWARE UPDATE

Identify the COM port on your PC.

1. Click the Start button in the lower left corner of your Windows PC.
2. Click on Control Panel.
3. Click on Device Manager.
4. Click on the arrow next to "Ports (COM & LPT)".
5. You should see the COM port number.

Download and install the chip45boot2 GUI software in your PC. Copy the website location below into your browser and download the chip45boot2 firmware installer software.

[http://download.chip45.com/chip45boot2\\_GUI\\_V1.13.zip](http://download.chip45.com/chip45boot2_GUI_V1.13.zip)

Contact Smart-AVI support for the current firmware.

1. Power OFF the EZWall-Pro 3x3 V2.
2. Connect the RS-232 cable from the computer to the RS-232 port of the EZWall-Pro 3x3 V2.
3. Open the chip45boot2 GUI.
4. Connect to your active COM port using: 115200 Baud, No parity, 8 data bits, 1 stop bit, No flow control.
5. Initially the Status light in the lower right side of the chip45boot2 window will be dark. Status will appear next to it. The boot loader in the EZWall-Pro 3x3 V2 is only accessible for a few seconds after you power up the EZWall-Pro 3x3 V2. Immediately after turning on the power switch on the EZWall-Pro 3x3 V2 you must click the "Connect to Boot loader" button in the chip45boot2 window. You only have a second to connect. If you connect successfully to the boot loader the Status light will turn green and connected will appear next to it. If it doesn't connect the Status light will turn red and Failed will appear next to it. If you fail to connect, power off the EZWall-Pro 3x3 V2 and try again. See Figure 12-1.

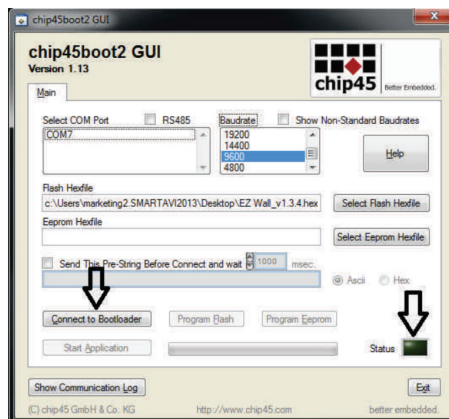


Figure 12-1



## FIRMWARE UPDATE (CONTINUED)

Click on the “Select Flash Hexfile” button. Navigate to and select the .hex firmware file. Click the “Program Flash” button. A green progress bar will display under the “Program Flash” button. The Status light will turn yellow and display “Uploading”.

See Figure 13-1.

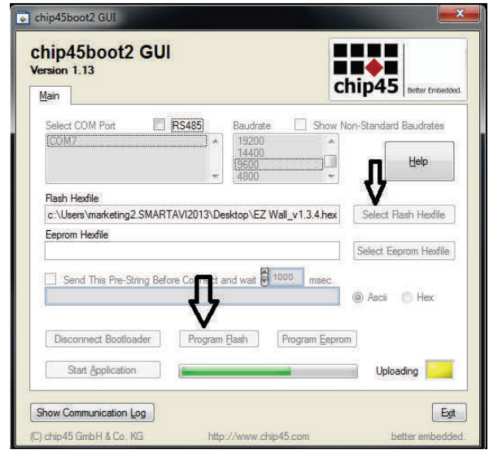


Figure 13-1

Upon successful completion the Status light will turn green and display Done!

See Figure 13-2.

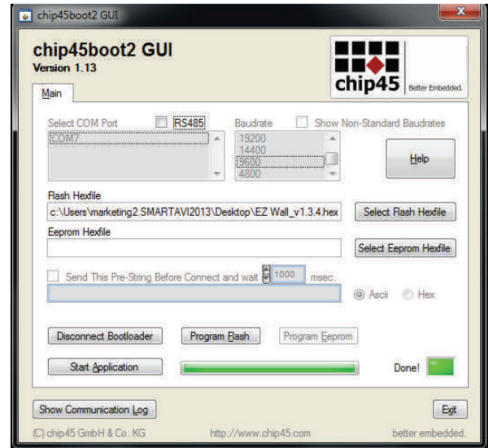


Figure 13-2

## LIMITED WARRANTY STATEMENT

### A. **Extent of limited warranty**

Smart-AVI Technologies, Inc. warrants to the end-user customers that the Smart-AVI product specified above will be free from defects in materials and workmanship for the duration of 1 year, which duration begins on the date of purchase by the customer. Customer is responsible for maintaining proof of date of purchase. Smart-AVI limited warranty covers only those defects which arise as a result of normal use of the product, and do not apply to any:

- a. Improper or inadequate maintenance or modifications*
- b. Operations outside product specifications*
- c. Mechanical abuse and exposure to severe conditions*

If Smart-AVI receives, during applicable warranty period, a notice of defect, Smart-AVI will at its discretion replace or repair defective product. If Smart-AVI is unable to replace or repair defective product covered by the Smart-AVI warranty within reasonable period of time, Smart-AVI shall refund the cost of the product. Smart-AVI shall have no obligation to repair, replace or refund unit until customer returns defective product to Smart-AVI. Any replacement product could be new or like new, provided that it has functionality at least equal to that of the product being replaced. Smart-AVI limited warranty is valid in any country where the covered product is distributed by Smart-AVI.

### B. **Limitations of warranty**

To the extent allowed by local law, neither Smart-AVI nor its third party suppliers make any other warranty or condition of any kind whether expressed or implied with respect to the Smart-AVI product, and specifically disclaim implied warranties or conditions of merchantability, satisfactory quality, and fitness for a particular purpose.

### C. **Limitations of liability**

To the extent allowed by local law the remedies provided in this warranty statement are the customers sole and exclusive remedies. To the extent allowed by local law, except for the obligations specifically set forth in this warranty statement, in no event will Smart-AVI or its third party suppliers be liable for direct, indirect, special, incidental, or consequential damages whether based on contract, tort or any other legal theory and whether advised of the possibility of such damages.

### D. **Local law**

To the extent that this warranty statement is inconsistent with local law, this warranty statement shall be considered modified to be consistent with the law.



*Designed and Manufactured in the USA*