

# MXWall-Pro

Real-Time Video Wall Processor and Matrix Switch



**MXWall-Pro** is a powerful video wall processor capable of displaying of multiple video sources across multiple connected display devices in a vast array of creative configurations. Our “Big Data” Era necessitates “Big Picture” visualization, and MXWall-Pro delivers both impactful video wall scale and flexibility suited for any environment.

## FEATURES

- Complete hardware solution
- Plug-and-play ready
- Expandable HDMI inputs and DVI outputs (up to 32x32)
- 1080p (1920x1080 @ 60Hz) Output Resolution
- Flexible video wall display configurations
- Reliable 24/7 Uninterrupted Use
- Easy control and access
- HDCP and HDMI 1.4 compliant
- User-Friendly MXWall Manager Software

## APPLICATIONS

- Corporate or Educational Presentations
- Airport Installations
- Wall Displays
- Digital Signage
- Dealer Rooms
- Control Rooms
- Shopping Centers
- Security
- Point-of-Sale Retail
- Entertainment Venues
- Corporate Lobbies
- Restaurants



## FULLY SCALABLE VIDEO WALL PROCESSING SOLUTION

Combining full switching capabilities of a matrix and the versatile high definition capabilities of a converter-scaler, SmartAVI's MXWall-Pro is an ideal all-in-one video wall processing solution. Specifically designed for the most demanding environments and applications, the MXWall-Pro lets users effortlessly manage and route up to 32 HDMI video sources to 32 HD displays in real time at stellar picture resolutions up to 1080p.

Stun and enthrall with robust multi-screen configurations and full scaling capabilities across 32 screens. Completely compatible with HDCP and HDMI 1.4 connectors, the MXWall-Pro reliably transmits HD content across fully scalable display configurations in real-time for 24/7 uninterrupted use and HD output.



HD imagery. Flexible layouts. Striking results: MXWall-Pro is unmatched at video wall processing!

### EXPANDABLE INPUT-OUTPUT CONFIGURATIONS

MXWall-Pro-2	4x4
	8x8
	12x12
	16x16
	32x32

## USER-FRIENDLY, GORGEOUS, POWERFUL

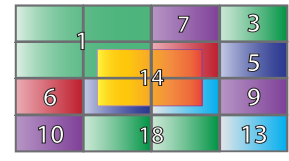
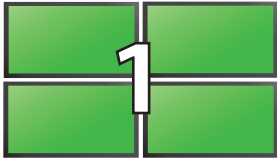
Plug-and-play ready, the MXWall-Pro requires absolutely no technical skill to install and operate. Optimized for USB media and HDMI device compatibility, the MXWall-Pro offers both ease and freedom to craft video wall displays in any capacity.

Perfect for large-scale displays and digital signage arrangements, MXWall-Pro is terrific for large public displays, entertainment venues, and transportation hubs like airports. The MXWall-Pro's reliability and unmatched scalability also make it an essential addition to control rooms, command centers, and other mission-critical environments: no matter your video wall needs, SmartAVI's MXWall-Pro delivers them to amazing effect!



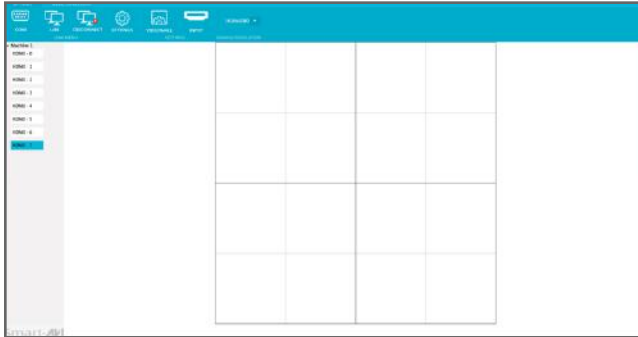
MXWall-Pro is media-format friendly and supports multiple file types ideal for crafting engaging video wall displays.

## CREATIVE CONTROL & FLEXIBILITY



The MXWall-Pro's robust selection of display configurations bring imaginative multi-screen collages to life!

From 4x4 displays to stunning 32x32 video walls, MXWallPro makes crafting your ideal configurations effortless and effective!



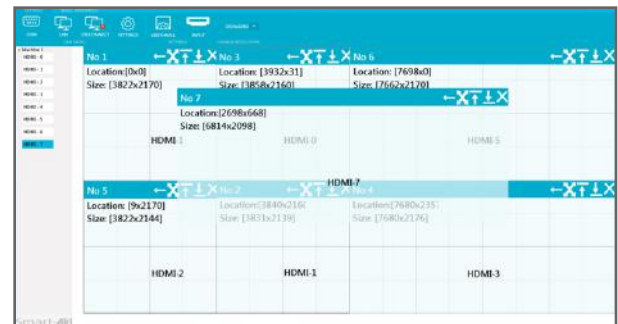
### EASY TO USE:

The MXWall Manager software features a streamlined layout that keeps things simple and clear. Our intuitive menus and settings interface ensure set-ups always are easy and stress-free.

Choose from settings like aspect-ratio, rows, columns, video sources, and more! Adjust resolutions, scaling, and active monitors on the fly. Not happy with your current configuration? Just clear the workspace and start fresh: it's that simple!

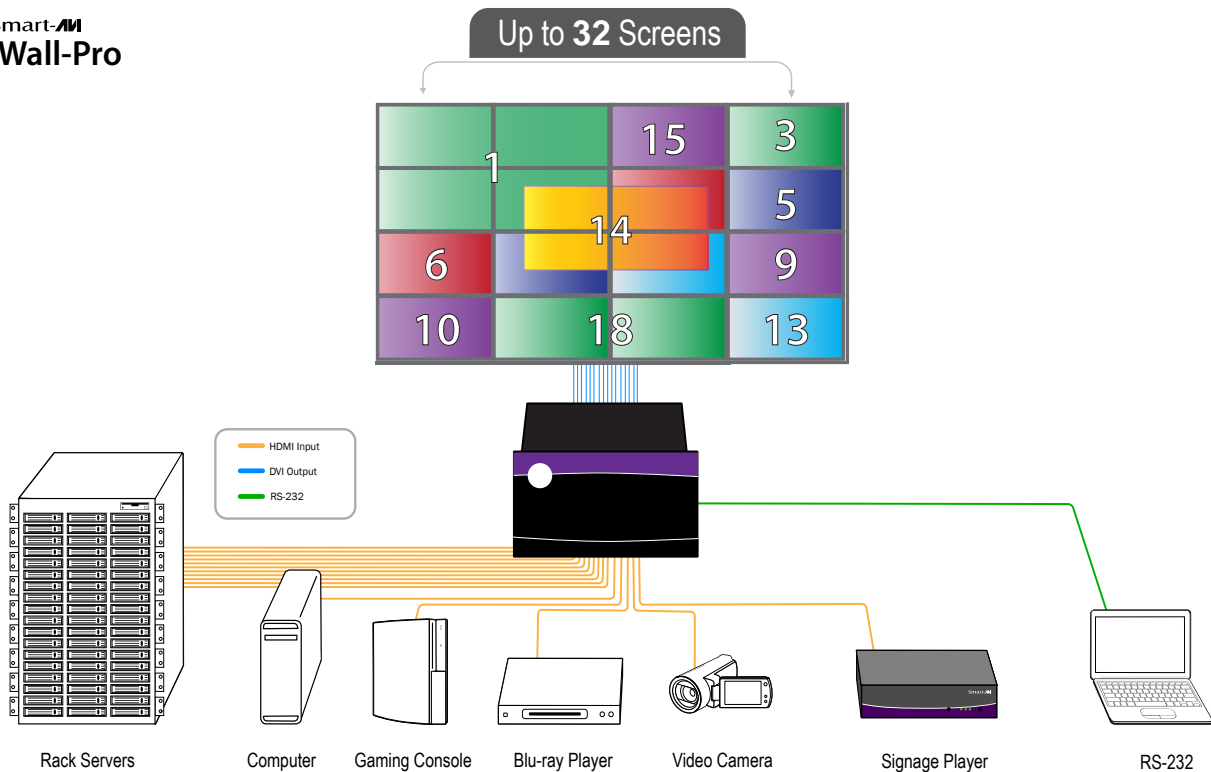
### FULLY CUSTOMIZABLE:

Take your pick of any of our versatile display modes. Select any screen and input the source you would prefer. Even multiple video sources can share a single screen with our QUAD, PIP, and WINDOWED display modes. The possibilities are as endless as your creative potential!



## APPLICATION DIAGRAM

Smart-AM  
MXWall-Pro





# SPECIFICATIONS



MXWall-Pro Front



MXWall-Pro (32x32) Rear

## VIDEO

Video Amplifier Bandwidth	3.2G
Input Video Signal	Video (TMDS) 0.5~1.0Vpp
Input DDC Signal	5 volts
Compliances	HDMI 1.4 and HDCP
Pixel Rates	Clock frequency beyond 165Mpix/second
Format	4:4:4 and 4:2:2 data input formats
Resolution	480p, 720p, 1080i, 1080p
Input Card Format	HDMI, DVI
Output Card Format	HDMI, DVI
Input Slots	Up to 8 cards (4 inputs each)
Output Slots	Up to 8 cards (4 outputs each)
Video Type	RGB/YCBCR : 24/30/36-bits, YCBCR: 8/10/12/16/20/24-bits

## CONTROLS

Front	State Display with push buttons
RS-232	9600bps, Software flow DB9 Female
TCP/IP	Webserver, Telnet

## OTHER

Working Temperature	0°C~+55°C
Storage Humidity	10%~90%
Weight	30 lbs.
Dimensions	17.125 in (W) x 12 in (H) x 12 in (D)
Power Supply	50/60Hz, 100~230 VAC
Consumption	300W

## ORDERING INFORMATION

Part No.	Description
MXWALLPRO-S	HDMI, DVI Real-Time Matrix with Integrated Video Wall Includes: [MXWall-Pro, (CCPWR06)]



Designed and Manufactured in the USA

[www.smartavi.com](http://www.smartavi.com)

Tel: 800.AVI.2131 • 818.503.6200 • 11651  
Vanowen St. North Hollywood, CA. 91605

**Smart-AVI**  
SMART AUDIO VIDEO INNOVATION