

MXWall-UHD

8x8 Ultra HD (4k/60Hz) Videowall Processor with Seamless Matrix Features



All-in-one video wall and matrix solution with 4K Full UHD inputs and outputs, an integrated converter and scaler.

FEATURES:

- Supports UHD 4K/60Hz, 4K/30Hz and 1080p/60Hz on both inputs and outputs
- HDMI 2.0 input
- Seamless switching
- Control via IP, RS-232 and the front panel
- Windows GUI allows unlimited customization
- Can be configured as 2x4, 4x2, 1x8 and more
- Integrated scaler can convert any resolution to UHD
- Complete hardware solution
- Plug-and-play ready
- Unlimited Layouts

APPLICATIONS:

- Corporate or Educational Presentations
- Airport Installations
- Wall Displays
- Digital Signage
- Dealer Rooms
- Control Rooms
- Shopping Centers
- Security
- Point-of-Sale Retail
- Entertainment Venues
- Corporate Lobbies
- Restaurants



Designed and Manufactured in the USA

FULLY SCALABLE VIDEO WALL PROCESSING SOLUTION

Combining full switching capabilities of a matrix and the versatile high definition capabilities of a converter-scaler, SmartAVI's MXWall-UHD is an ideal all-in-one video wall processing solution. Specifically designed for demanding video display applications, the MXWall-UHD lets users effortlessly manage and route 8 HDMI video sources up to 8 UHD displays in real time with stellar picture resolutions up to 4k.

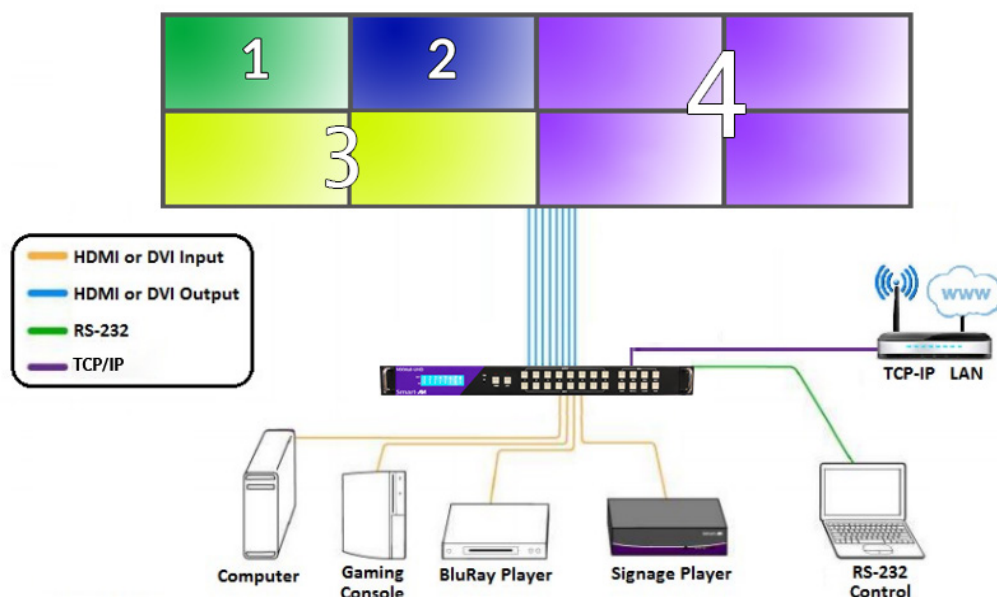
The MXWall-UHD features multi-screen configuration options and full scaling capabilities across a maximum of 8 screens. Completely compatible with HDCP and HDMI 2.0, the MXWall-UHD reliably transmits UHD content across fully scalable display configurations in real-time for 24/7 uninterrupted use.



USER-FRIENDLY, FLEXIBLE, POWERFUL

Plug-and-play ready, the MXWall-UHD requires absolutely no technical skill to install and operate. Optimized for media and HDMI device compatibility, the MXWall-UHD offers both ease and freedom to craft video wall displays in any capacity.

Perfect for mid-sized video-wall and digital signage arrangements, MXWall-UHD is terrific for public displays, entertainment venues, and transportation hubs like airports. The MXWall-UHD's reliability and scalability also make it an essential addition to controlrooms, command centers, and other mission-critical environments: no matter what your video wall needs, SmartAVI's MXWall-UHD delivers them to amazing effect!



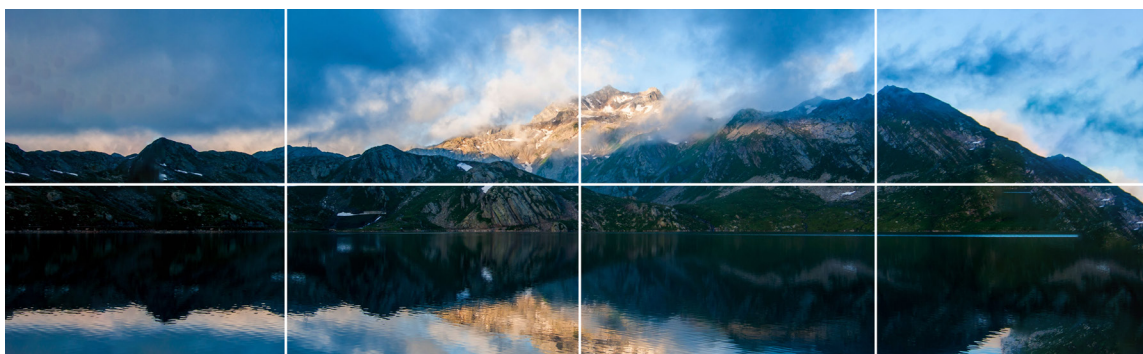
UNLIMITED CONFIGURATIONS:

It is easy to create different configurations or modes that are simple to navigate through with the MX-Wall-UHD. There are endless possibilities. Creating and switching between display modes is simple. Front panel buttons, on-screen-display, RS-232, and TCP/IP can be used to switch between modes at will. The MXWall-UHD presents nearly unlimited configuration possibilities.



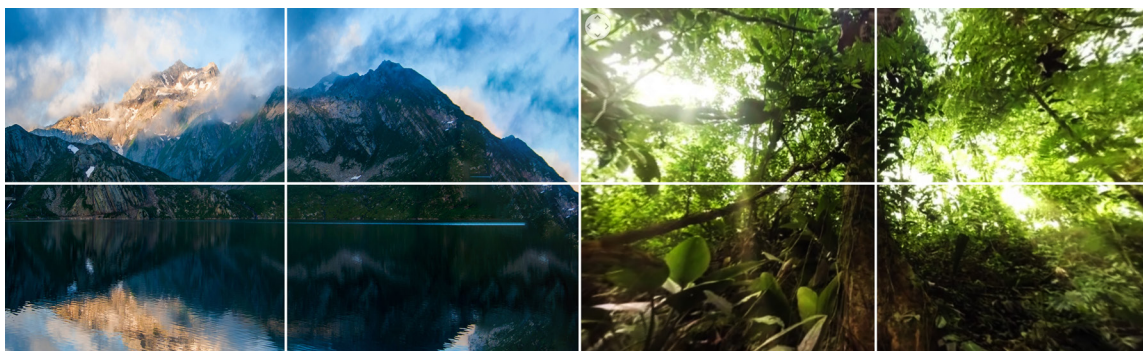
Individual Mode:

Users can route individual input images to each display individually.



Video Wall Mode:

Users can stretch an input image across 8 UHD screens with resolutions of up to 4K/60Hz.

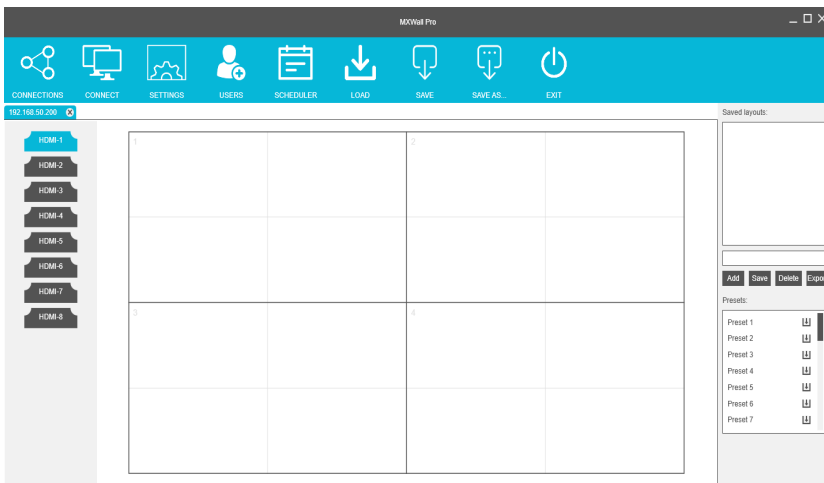


Custom Displays:

User defined custom displays can be created with supplied software: Users can populate individual screens with multiple inputs. Add any of the input signals to play along side others within a single display.

MXWALL MANAGER SOFTWARE

The MXWall-UHD also comes with SmartAVI's intuitive MXWall Manager software, which allows users to create amazing video wall displays in minutes. Its click-and-drag operation and simple layout ensure managing video walls is easy and effective every time!

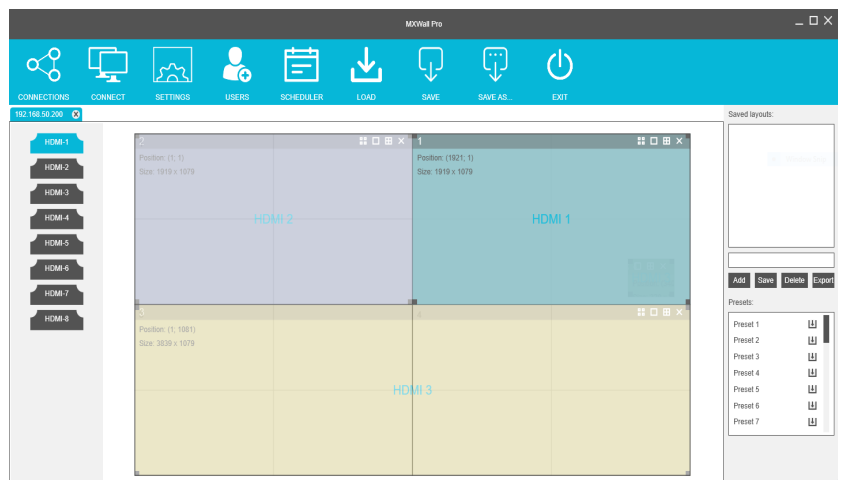


EASY TO USE:

The MXWall Manager software features a streamlined layout that keeps things simple and clear. Our intuitive menus and settings interface ensure set-ups always are easy and stress-free. Choose from settings like aspect-ratio, rows, columns, video sources, and more! Adjust resolutions, scaling, and active monitors on the fly. Not happy with your current configuration? Just clear the workspace and start fresh: it's that simple!

FULLY CUSTOMIZABLE:

Take your pick of any of our versatile display modes. Select any screen and input the source you would prefer. Even multiple video sources can share a single screen with INDIVIDUAL and QUAD display modes. The possibilities are as endless as your creative potential!



TECHNICAL SPECIFICATIONS:



MXWall-UHD Front



MXWall-UHD Rear

VIDEO	
Video Amplifier Bandwidth	18 Gbps
Input Video Signal	Video (TMDS) 0.4~1.0Vpp
Input DDC Signal	5 Volts
Compliances	HDMI 2.0, HDCP 2.2
Input Resolutions	3840x2160@24Hz/25Hz/30Hz/ 50Hz/60Hz
Output Resolutions	3840x2160@24Hz/25Hz/30Hz/ 50Hz/60Hz, 1080p@60Hz
Video Type	HDMI
HDMI (In)	8
HDMI (Out)	8
AUDIO	
Audio (In)	3.5mm (x8)
Audio (Out)	3.5mm (x8)

OTHER	
Working Temperature	0°C~+40°C
Storage Humidity	10%~50%
Weight	11 lbs.
Dimensions	17" (W) x 3.5" (H) x 15" (D)
Power Supply	50/60Hz, 110-240 VAC
IR (Out)	x8
IR (In)	x8
Power Consumption	100W
CONTROL	
Front Panel	Tacticle Switches
RS-232	DB9 connector, Baud Rate 9600
TCP/IP	RJ-45, UDP telnet

ORDERING INFORMATION	
Model Number	Description
MXWALL-UHD-S	8x8 4K/60Hz Video Wall Processor and Matrix Switch. Includes: [MXWALL-UHD and CCPWR06]