



Double-Wall Drawer Systems

Häfele Moovit®

Information	8.3
Drawer Slides and Profiles	8.4
Railing Sets and Cross Rails	8.5
Front Panels and Brackets	8.6
Height Extension Panels	8.7
Glass Side Panels	8.8
Accessories	8.9

Grass Vionaro

Drawer Sides and Slides	8.10-8.11
Accessories and Front Panels	8.12-8.13

Salice Lineabox

Metal Sides	8.14
Accessories	8.15



Single-Wall Drawer Systems

Grass Zargen

Information	8.16-8.18
Drawer Sides	8.19-8.21
Full Extension Slides	8.21
Side Rails/Dividers	8.22
Pendaflex	8.23

Drawer Systems

Supra Drawer System	8.24-8.25
Soft Closing Mechanism	8.26



Concealed Undermount Slides

Salice

Futura 16 and 19	8.27-8.28
Futura Push	8.29-8.31

Grass

Dynapro	8.32-8.37
---------	-----------

Elite Plus	8.38-8.40
Sensomatic Door Opener	8.41-8.42

Concealed Undermount Slides	8.43
-----------------------------	------



Ball Bearing Slides

Accuride

Information	8.44-8.45
3/4 Extension – 35 lbs.	8.46
Full Extension – 65 lbs.	8.47
3/4 Extension – 75 lbs.	8.48
Full Extension – 100 lbs.	8.49-8.50, 8.52-8.53
	8.55-8.59, 8.61-8.63
Full Extension – 90 lbs.	8.51, 8.54
Full Extension – 150 lbs.	8.60, 8.64
Full Extension – 180 lbs.	8.65
Full Extension – 75/200 lbs.	8.66
Full Extension – 150/350 lbs.	8.67
Full Extension – 150-500 lbs.	8.68

Overtravel – 75/200 lbs.	8.69
Overtravel – 150 lbs.	8.70
3/4 Extension – 75 lbs.	8.71
Two Way Slides – 50 lbs/100 lbs..	8.72-8.73
Shelf Slide – 100 lbs.	8.74
Lock-Out – 110 lbs.	8.75
Over Extension – 155 lbs.	8.76
Pantry Slide – 175 lbs.	8.77-8.78
Linear Motion Track System	8.79-8.80
Stainless Steel Full Extension	8.81-8.82
17 mm 3/4 Extension – 22 lbs.	8.83
Econo Slide – Full Extension – 100 lbs.	8.84



Epoxy/Plastic Slides and Accessories

3/4 Extension – 100 lbs.	8.85
Full Extension – 150 lbs.	8.86
Rear Mounting Brackets and Spacers	8.87

Drawer Front Adjustment Fittings	8.88
Roll-out Tray Supports	8.89-8.90
Plastic Rails	8.91

Pull-Out Cabinet Slides/Guides

Single Extension – Tiratell – 220 lbs.	8.92
Full Extension – 275 lbs.	8.93

EKU Forte – 374 lbs.	8.94-8.95
Partial Extension – 440 lbs.	8.96

Häfele Moovit®

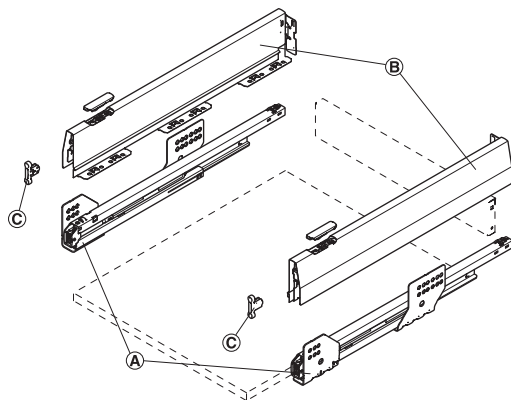
- 3 finishes available
- Integrated Soft & Silent mechanism for a smooth and consistent close
- Quick and simple assembly and installation
- Tool-free drawer front assembly and removal
- Numerous accessories are available to customize drawers
- Heavy duty weight rating: 50 kg (110 lbs.) and 70 kg (154 lbs.)
- Convenient adjustment location allows for quick and simple vertical and horizontal adjustment from the top

soft&silent)))



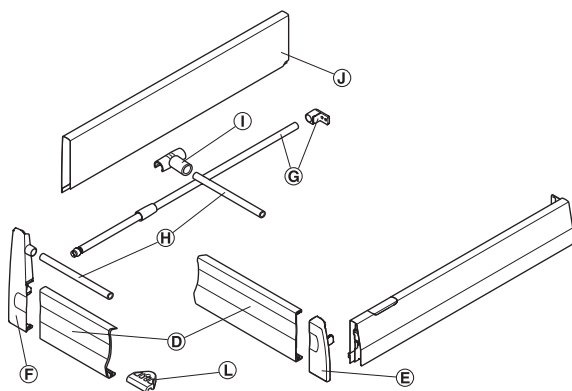
Standard Drawer System

- A:** Full extension drawer slide with integrated soft and silent mechanism
B: Drawer side profiles
C: Drawer front fixing brackets

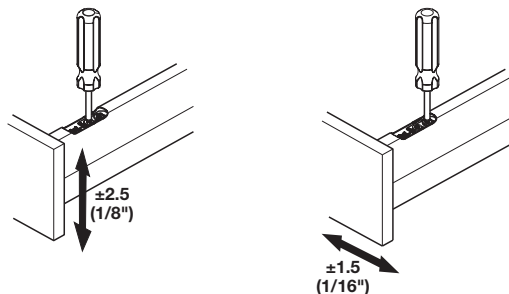


Internal Drawer System

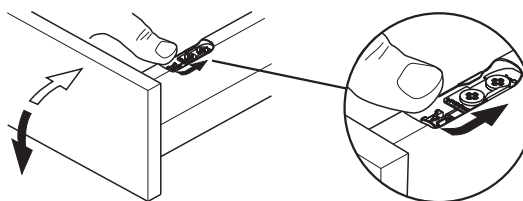
- D:** Front panel for internal drawers
E: Front fixing brackets for internal drawers
F: Front fixing brackets for internal drawers with railing
G, H, I: Railing set
J: Height extension panel
 (G, H, I and J can be used on Standard Drawer System also)
L: Stabilizing plate



Convenient height and side adjustment from the top.



No tools required for mounting and removing the drawer front



Calculation of Drawer Dimensions

- 5/8" material required for drawer bottom and back
- Drawer Bottom Width = Internal cabinet width minus 62 mm
- Drawer Bottom Depth = Moovit profile length minus 3 mm
- Drawer Back Height = 69 mm for standard profile
157 mm with height extension panel
- Drawer Back Width = same as bottom
- Drawer Front Fixing Bracket positioning = ICW-44 mm centered