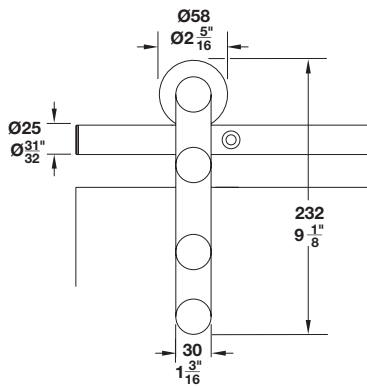
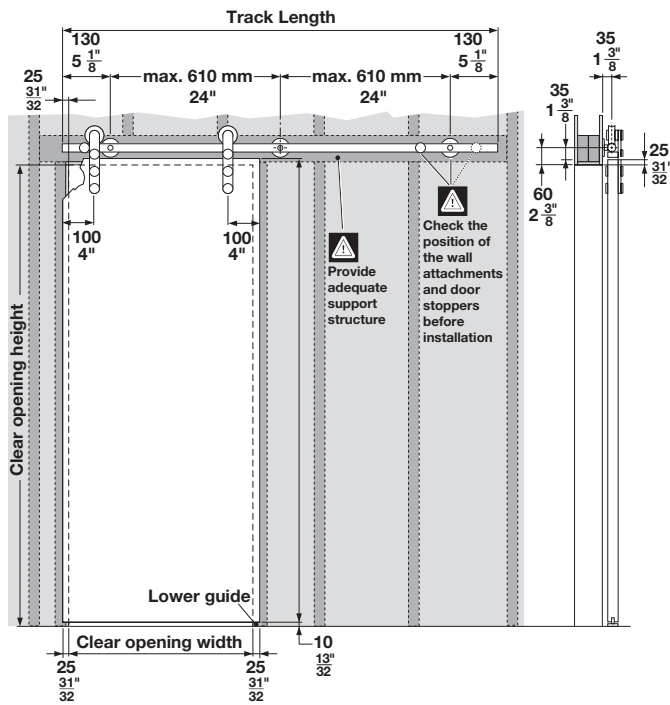
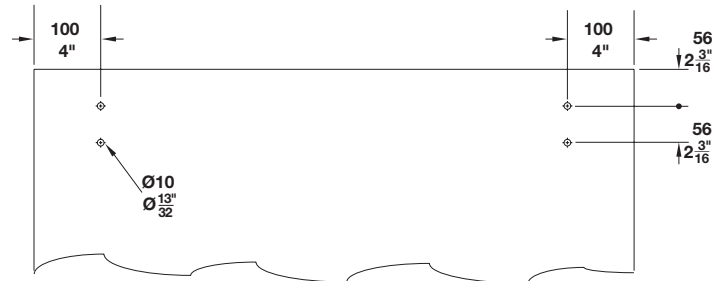


Antra I with Hollow Tube Upper Track

- Maximum door weight: 100 kg (220 lbs.)
- Door thickness: 35 – 45 mm (1 3/8" – 1 3/4")
- Height adjustable: ±3 mm (1/8")
- For 1 sliding wood door
- Smooth quiet operation
- Maintenance-free
- Simple installation
- Stainless steel components
- Tested according to ANSI/BHMA A156.14-2013



Thru-hole locations









Antra I Fitting Sets

- Complete sets for 1 sliding wood door

Door width, max.	Track length A	Item No.
0.9 m (35 7/16")	1.8 m (5' 10 7/8")	941.07.184
1 m (39 7/8")	2.1 m (6' 10 11/16")	941.07.185
1.1 m (43 5/16")	2.3 m (7' 6 9/16")	941.07.186
1.25 m (49 3/16")	2.54 m (8' 4")	941.07.187

Set Components

	Description	Material	Finish	Track length	Qty./door	Item No.
	Upper track, hollow tube	Stainless Steel	dark bronze	1.8 m (5' 10 7/8")	1 pc.	941.07.919
				2.1 m (6' 10 11/16")		941.07.922
				2.3 m (7' 6 9/16")		941.07.924
				2.54 m (8' 4")		941.07.926
	Running gear, face mounted	Stainless Steel	dark bronze	-	2 pcs.	941.07.191
	Door stop	Stainless Steel	dark bronze	-	1 set (1 LH and 1 RH)	941.07.301
	Wall attachment with 19 mm (3/4") spacer	Stainless Steel	dark bronze	1 pc.	4 pcs. (up to door width of 1 m (39 7/8") or 5 pcs.	941.07.411
				2 pc. set		940.64.405
				3 pc. set		940.64.406
	Lower guide	Plastic	anthracite	-	1 pc.	941.07.131
	Hex key, 5 mm	Steel	galvanized	-	1 pc.	008.28.062

Installation Plan

Included in fitting set, also available for planning and execution upon request.

Note

Item numbers stated are valid for 1 pc. When ordering individual components please indicate the desired quantity.
Order hanger bolts separately.
For bi-parting application order 2 sets plus the coupler 941.07.407.

Dimensional data not binding. We reserve the right to alter specifications without notice.

Hanger bolts	page 1.107
Accessories	pages 1.119-1.123