





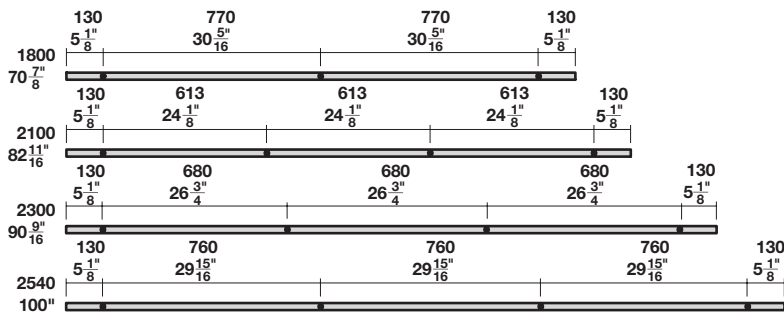


**Accessories – For Solid Rod Stainless Steel Tracks**

**Running Gear and Track**

	Description	Material	Finish	Drillings	Length/Diameter	Item No.
	Running gear for Flatec I glass, height adjustable +/- 3 mm (1/8")	Stainless Steel	matt	-	-	941.07.118
	Running gear for Unotec Home glass	Stainless Steel	matt	-	-	941.64.121
	Running gear for Tritec glass	Stainless Steel	matt	-	-	941.07.124
	Upper track, solid rod, pre-drilled	Stainless Steel	matt	3	1.8 m (5' 10 7/8")	940.64.918
				4	2.1 m (6' 10 11/16")	940.64.921
				4	2.3 m (7' 6 9/16")	940.64.923
				4	2.54 m (8' 4")	940.64.925
	Coupling sleeve for connecting two upper tracks, not crossable	Stainless Steel	matt	-	Ø35 mm (1 3/8")	941.07.401
	Angular coupling sleeve for connecting two upper tracks, not crossable, adjustable 90° – 270°	Stainless Steel	matt	-	Ø35 mm (1 3/8")	941.07.406

Drilling dimensions for solid rod upper tracks:



Dimensional data not binding. We reserve the right to alter specifications without notice.

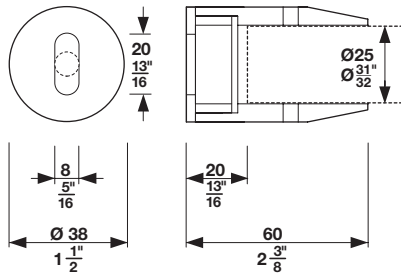
Dimensions in mm  
 Inches are approximate

Accessories – For Solid Rod Stainless Steel Tracks

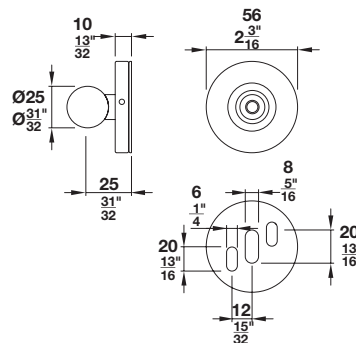
Wall Attachments

Description	Material	Finish	Qty.	Item No.
 Wall-mounted end cap, height adjustable by +/- 3 mm (1/8")	Stainless Steel	mat	-	941.07.108
 Wall mount, Ø38 mm (1 1/2"), height adjustable by +/- 3 mm (1/8")	Stainless Steel	mat	-	941.07.109
 Wall attachment with 5 mm (3/16") spacer	Stainless Steel	mat	1 pc.	941.07.101
			2 pc. set	940.64.400
			3 pc. set	940.64.401
 Wall attachment bracket, Ø55 mm (2 3/16"), adjustable in width and height	Stainless Steel	mat	-	941.07.412
 Support disks for 12.7 mm (1/2") or 16 mm (5/8") thick drywall, Ø50 mm (2")	Plastic	black	-	941.07.132
 Glass mounting bracket for 8 - 12.7 mm (5/16" - 1/2") thick glass	Stainless Steel	mat	-	941.07.112

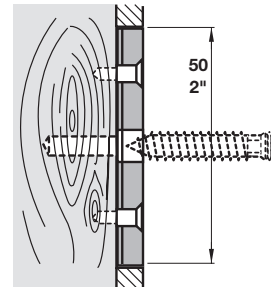
Wall-mounted end cap



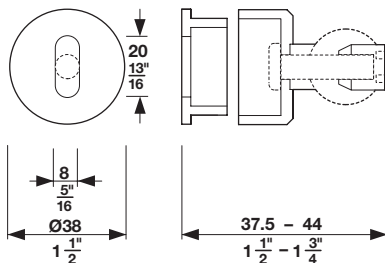
Wall attachment bracket, 55 mm (2 3/16")



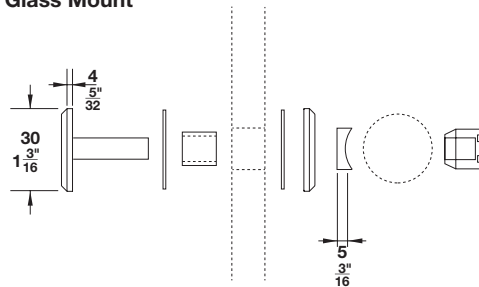
Support Disk for drywall mounting



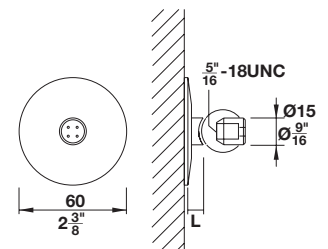
Wall mount



Glass Mount



Wall attachment bracket, 60 mm (2 3/8")



Dimensions in mm  
Inches are approximate

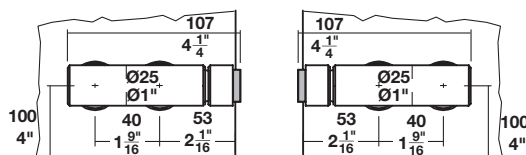
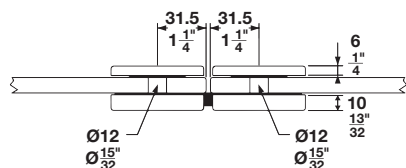
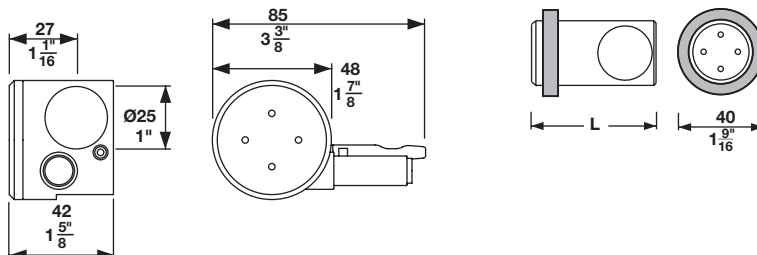
**Accessories – For Solid Rod Stainless Steel Tracks**

**Door Dampeners and Stops**

	Description	Material	Finish	Length	Item No.
	Door dampener set, Flatec I	Stainless Steel	matt	–	941.07.096
	Door dampener set, Unotec Home and Tritec	Stainless Steel	matt	–	941.07.095
	Door stop, Flatec I and Tritec	Stainless Steel	matt	45 mm (1 3/4")	941.07.127
	Door stop, Unotec Home	Stainless Steel	matt	57 mm (2 1/4")	941.07.126
	Door stop set	Stainless Steel	matt	–	941.07.128
	Door stop set	Stainless Steel	matt	–	941.07.300

**Note**

All solid stainless steel track sets include a door dampener set.





Dimensional data not binding. We reserve the right to alter specifications without notice.

Dimensions in mm  
 Inches are approximate

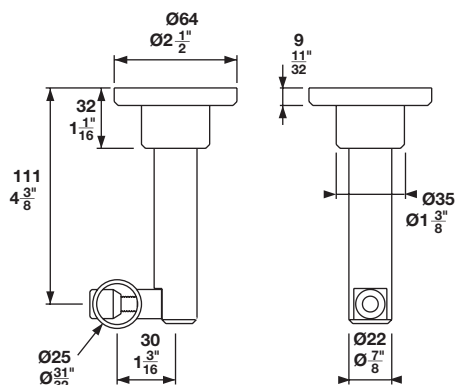
**Accessories – For Solid Rod Stainless Steel Tracks**

**Ceiling Brackets**

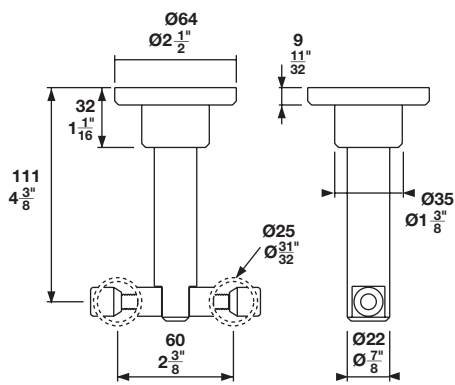
1

Description	Material	Finish	Item No.
 Ceiling bracket, for one solid rod upper track	Stainless Steel	matt	941.07.430
 Ceiling bracket, for two solid rod bypassing upper tracks	Stainless Steel	matt	941.07.432

**Ceiling Bracket for Solid Rod Single Upper Track**





**Ceiling Bracket for Solid Rod Two Bypassing Upper Track**



Dimensions in mm  
 Inches are approximate

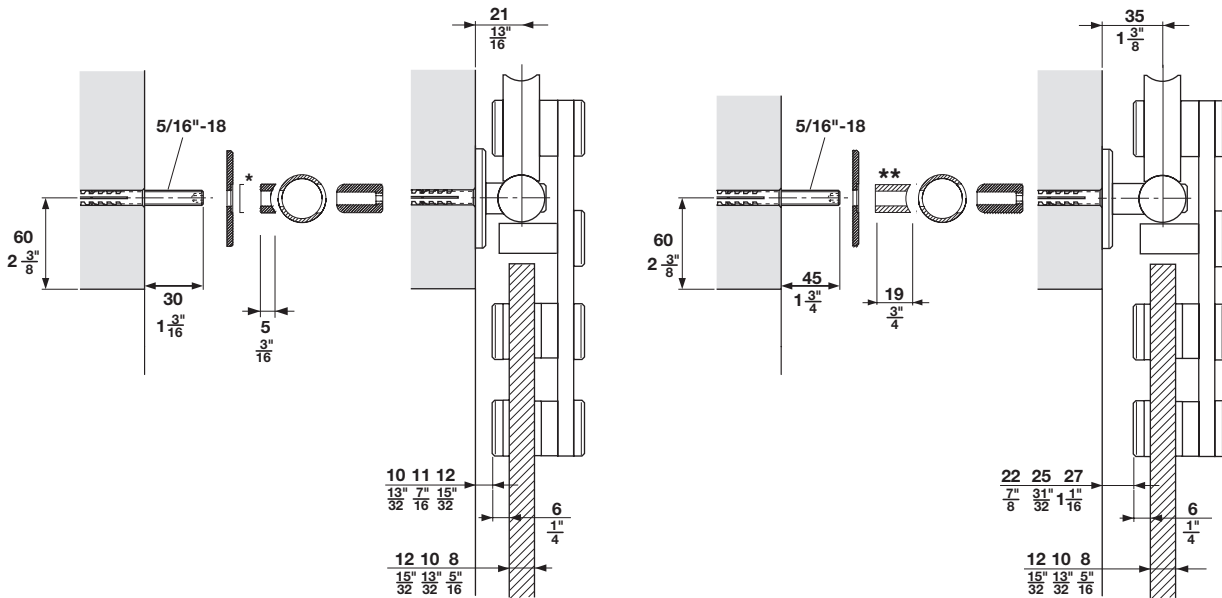
Accessories – For Solid Rod Stainless Steel Tracks

Spacer and Disk

	Description	Material	Finish	Length/Diameter	Item No.
	Baseboard spacer	Stainless Steel	matt	5 mm (3/16")	941.07.142
				19 mm (3/4")	941.07.103
				Ø2 mm (1/16")	941.07.105
	Compensation disk	Stainless Steel	matt	Ø5 mm (3/16")	941.07.106
				Ø10 mm (13/32")	941.07.107



Standard installation

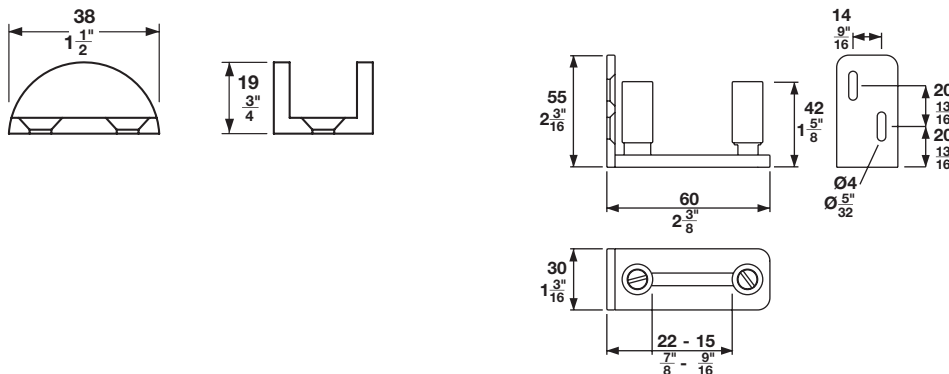
Installation with baseboards and trim



\* If needed the distance between the wall and the track can be adjusted by adding one of the compensation discs per wall attachment.  
\*\* For installations with a baseboard or door trim please order the baseboard spacer (941.07.103) separately; one per wall attachment.

Lower guides

	Description	Material	Finish	Item No.
	Lower guide, floor mounted	Stainless Steel	matt	941.07.129
	Lower guide, for glass doors, wall mounted, adjustable 8 – 12.7 mm (5/16" – 1/2")	Stainless Steel	-	941.07.241



Dimensional data not binding. We reserve the right to alter specifications without notice.

Dimensions in mm  
Inches are approximate