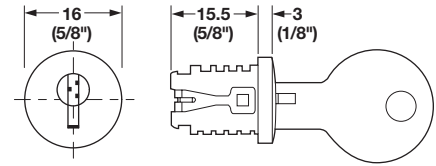


**Modular Removable Core Locking System – Timberline**

- Separates the lock core from cylinder housing
- Any combination of locking systems can be obtained
- Manufacturer can install fully functional locking systems
- Simplifies the planning and changing of locking systems
- Lock cores can be replaced with the aid of the removal key



**Snap-In Lock Core**

- Suitable For Any Cylinder Body
- 5 plate levers = 900 possible key changes

**Keyed Different**

Material: Zinc die-cast, unfinished; Plate levers: Brass; Keys: Brass; Finish: nickel-plated

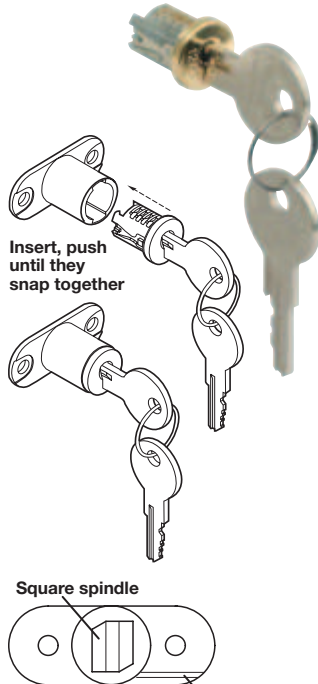
Lock face:	Nickel Polished	Nickel Matt	Brass Polished	Bronzed Epoxy	Black Epoxy	White Epoxy
Item No.	210.04.606	210.04.710	210.04.803	210.04.106	210.04.302	210.04.500
Timberline No.	LP-100	LP-700	LP-500	LP-400	LP-300	LP-820

**Keyed Alike**

Lock face:	Nickel Polished	Nickel Matt	Brass Polished	Bronzed Epoxy	Black Epoxy	White Epoxy
Keying #'s	Item No.					
100 TA	210.04.615	210.04.720	210.04.812	210.04.115	210.04.311	210.04.510
101 TA	210.04.624	210.04.721	210.04.821	210.04.124	210.04.320	210.04.511
102 TA	210.04.633	210.04.722	210.04.830	210.04.133	210.04.339	210.04.512
103 TA	210.04.642	210.04.723	210.04.849	210.04.142	210.04.348	210.04.513
104 TA	210.04.651	210.04.724	210.04.858	210.04.151	210.04.357	210.04.514
105 TA	210.04.660	210.04.725	210.04.867	210.04.160	210.04.366	210.04.515
106 TA	210.04.679	210.04.726	210.04.876	210.04.179	210.04.375	210.04.516
107 TA	210.04.688	210.04.727	210.04.885	210.04.188	210.04.384	210.04.517
108 TA	210.04.697	210.04.728	210.04.894	210.04.197	210.04.393	210.04.518
109 TA	210.04.704	210.04.729	210.04.901	210.04.204	210.04.400	210.04.519

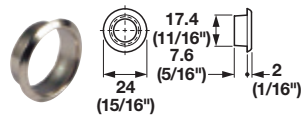
**Supplied With**

2 Keys



**Note**

The cylinder housings and lock cores are marked (see diagram above). A series of furniture doors can all be locked with the same direction of turn, if the markings are positioned identically.



**Cylinder Rosette**

- For any cylinder body

Material: Steel

Finish/Color	Timberline No.	Item No.
nickel polished	BZ-100	210.04.062
nickel matt	BZ-700	210.04.070
brass polished	BZ-500	210.04.054
bronzed	BZ-400	210.04.017
black	BZ-300	210.04.035
white	BZ-800	210.04.071

**Note**

Requires Ø19 mm hole for installation with lock cylinder.

**Protective Cap**

- Keeps interior of cylinder housing free of paint and dirt after lock is installed.

Material: PVC

Color	Timberline No.	Item No.
orange	CC-100	210.02.095

**Removal Key**

- To remove lock cores

Material: Brass

Timberline No.	Item No.
KY-500-TA	210.02.004

**Master Key**

- Fits all TA lock cores (see table above)

Material: Brass

Timberline No.	Item No.
KY-101-TA	210.02.059

**Replacement Key**

- Special order only
- Specify key number at time of order

Material: Brass

Item No.
210.02.009

Dimensional data not binding. We reserve the right to alter specifications without notice.