

**Pantry Pull-Out**

- Easy installation
  - For 12" to 24" cabinet widths
  - Door mounted; for overlay and inset doors
  - Height adjustable trays in 4" increments
  - Integrated soft open and soft close
  - Synchronized runner provides a more stable and smooth operation
- Weight capacity: 265 lbs.

**Note**

Available in Häfele's 20-20 catalog.



*soft&silent*)))



**Full Extension Pantry Frame**

W x D: 121 x 546 mm (4 3/4" x 21 1/2")

Material: Steel

Installed Height	Rec. # of Shelves	Champagne	Silver
800 – 1200 (31 1/2" – 47 1/4")	4	546.62.810	546.62.910
1200 – 1600 (47 1/4" – 63")	4	546.62.811	546.62.911
1600 – 2000 (63" – 78 3/4")	6	546.62.812	546.62.912
1900 – 2300 (74 7/8" – 90 1/2")	8	546.62.813	546.62.913

**Supplied With**

- Frame
- Runners
- Door brackets
- Integrated soft open and close



**Front Stabilizer, optional**

- Can be secured anywhere to the support frame
  - Additional door support for tall doors
- W x D x H: 160 x 28 x 20 mm (6 5/16" x 1 1/8" x 13/16")

Material: Steel

Finish	Item No.
champagne	546.76.420
silver	546.76.220



**Basket Holder, optional**

- To be used as add-on hooks when pantry frame height is extended
- Height: 125 mm (5")

Material: Steel

Finish	Item No.
champagne	545.84.480
silver	545.84.280

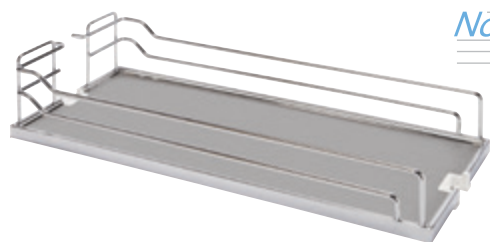
**Supplied With**

2 pcs.

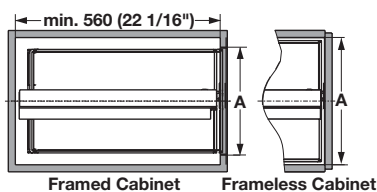
Storage container set	page 3.39
Flat head screws	pages 11.132-11.133, 11.135
Pan head screws	pages 11.134-11.135

Dimensions in mm  
Inches are approximate

Storage Sets



Non Slip



Arena Plus Tray Set

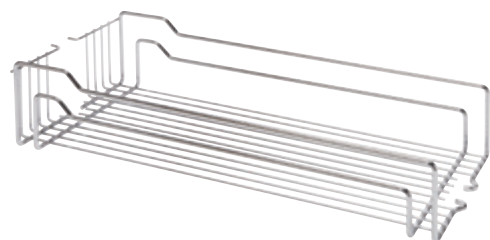
D x H: 518 x 105 mm (20 3/8" x 4 1/8")

Material: Shelf: Melamine; Surround: Steel, powder-coated or chrome

Width of Tray	A minimum	Champagne/Maple	Chrome/Maple	Chrome/White	Chrome/Gray
203 (8")	216 (8 1/2")	546.63.812	546.63.112	546.63.212	-
254 (10")	267 (10 1/2")	546.63.832	546.63.132	546.63.232	546.63.532
279 (11")	292 (11 1/2")	546.63.813	546.63.113	546.63.213	-
330 (13")	343 (13 1/2")	546.63.833	546.63.133	546.63.233	546.63.533
356 (14")	368 (14 1/2")	546.63.814	546.63.114	546.63.214	-
406 (16")	419 (16 1/2")	546.63.834	546.63.134	546.63.234	546.63.534
432 (17")	445 (17 1/2")	546.63.815	546.63.115	546.63.215	-
483 (19")	495 (19 1/2")	546.63.835	546.63.135	546.63.235	-
508 (20")	521 (20 1/2")	546.63.816	546.63.116	546.63.216	-
559 (22")	572 (22 1/2")	546.63.836	546.63.136	546.63.236	-

Supplied With

2 Trays



Wire Basket Set

D x H: 518 x 105 mm (20 3/8" x 4 1/8")

Material: Steel; Finish: chrome

Width of Tray	A minimum	Item No.
203 (8")	216 (8 1/2")	546.63.202
254 (10")	267 (10 1/2")	546.63.222
279 (11")	292 (11 1/2")	546.63.203
330 (13")	343 (13 1/2")	546.63.223
356 (14")	368 (14 1/2")	546.63.204
406 (16")	419 (16 1/2")	546.63.224
432 (17")	445 (17 1/2")	546.63.205
483 (19")	495 (19 1/2")	546.63.225
508 (20")	521 (20 1/2")	546.63.206
559 (22")	572 (22 1/2")	546.63.226

Supplied With

2 Baskets

Storage Container Set

- With 4 containers with lids (1.25 quarts) and 2 open containers  
Minimum opening width: 268 mm (10 1/2")  
W x D x H: 127 x 527 x 197 mm (5" x 20 3/4" x 7 3/4")

Material: Container: Plastic, translucent; Lids: gray; Support: Steel

Finish	Item No.
champagne	546.79.830
silver	546.79.230

Supplied With

2 Support elements  
6 Containers  
Divider



Dimensional data not binding. We reserve the right to alter specifications without notice.