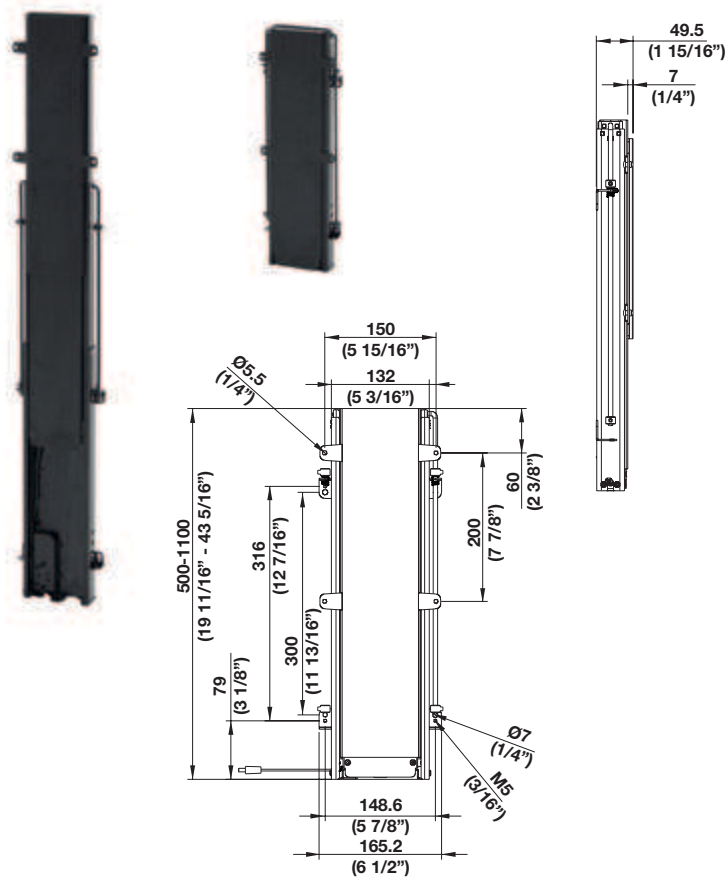


Motorized

- The compact design is perfect for light-duty use applications in end-of-bed units, kitchen cabinets, conference tables, desks and other types of furniture where space is limited
  - With a built-in height of 19 5/8" and a thickness of only 2", the lift fits perfectly in tight spaces; it has a stroke of approximately 23 1/2" and can accommodate TVs up to 40" diagonal
  - The unit features a finished back with no visible screw holes or mechanical features, making it an appealing choice for applications where the lift will be seen from behind
  - Each lift comes with anti-squeeze technology that stops all motion upon encountering an object
  - The lift comes with an RF remote and a rocker switch for manual operation
  - IR remote operation is also available
  - Mounting brackets cover a range of VESA standards: 200 x 200, 100 x 200 & 100 x 100
- Weight capacity: 25 lbs.



4



Lift

Material: Steel, powder-coated

| Color | Item No.   |
|-------|------------|
| black | 421.68.510 |

Supplied With

- Mounting brackets
- Radio frequency remote
- Rocker switch
- Power supply

Note

IR remote operation is available.

Infrared Conversion Set

| Item No.   |
|------------|
| 421.68.518 |

Dimensional data not binding. We reserve the right to alter specifications without notice.

Dimensions in mm  
Inches are approximate

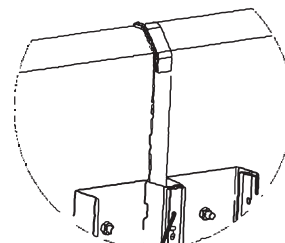
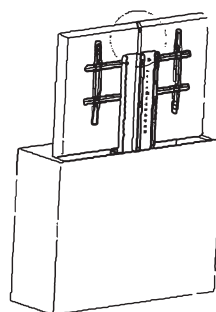


### Motorized Flat Panel

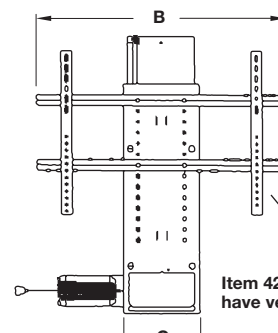
- Simple and fast mounting
- Rack & pinion design with unique stability system
- Universal mounting brackets
- Plug and Play electrical connections
- Wireless remote control operation and wired switch
- Height adjustable Lid Lifter
- Travel Speed: 1.11" per second
- Manufacturers warranty: 5 yrs.; 2 yrs. on electrical components



4



**Lid Lifter:**  
Lid Lifter easily adjusts up and down to provide a greater degree of flexibility when raising the TV out of the cabinet



Item 421.68.443 does not have vertical mounting bars.

### TV Lift

Weight capacity: 145 lbs. Weight capacity is reduced to 64 lbs. when the lift is inverted.

Material: Steel; Color: black

| Max. TV/Diagonal | Travel  | A        | B   | C       | D        | Anti Pinch | Adjustable Travel Stops | Item No.   |
|------------------|---------|----------|-----|---------|----------|------------|-------------------------|------------|
| 46"              | 27 1/2" | 23 5/8"  | 17" | 10 3/4" | 2 13/16" | yes        | yes                     | 421.68.443 |
| 50"              | 29 1/2" | 34 1/16" | 30" | 8 3/16" | 4 7/16"  | no         | no                      | 421.68.440 |
| 65"              | 39 1/4" | 29 1/2"  | 30" | 10 3/4" | 2 13/16" | yes        | yes                     | 421.68.444 |

#### Supplied With

Universal mounting brackets  
Radio frequency remote  
Power supply  
Wired switch

#### Infrared Conversion Set

| Item No.   |
|------------|
| 421.68.449 |

#### Supplied With

Module  
Remote  
Wired switch  
Sensor with card

#### Note

Required when connecting to a home theater system.

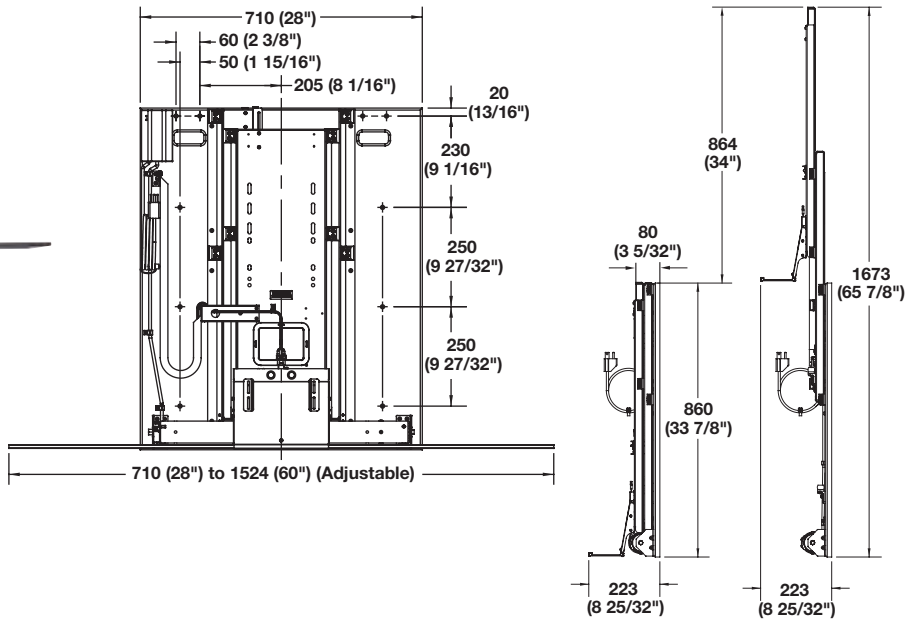
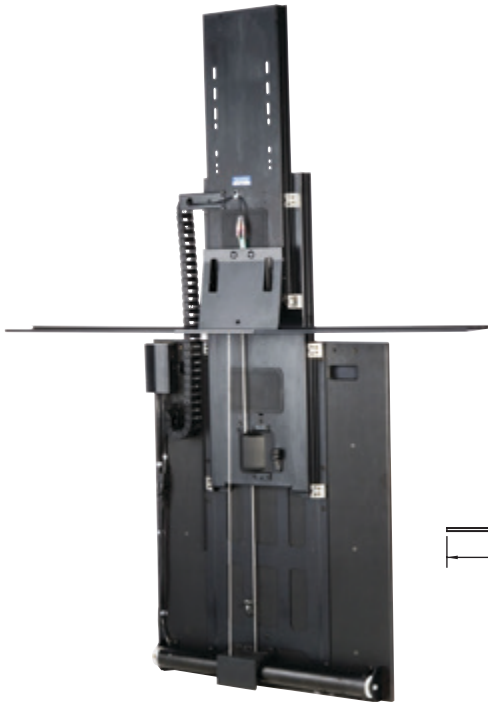
Dimensional data not binding. We reserve the right to alter specifications without notice.

Dimensions in mm  
Inches are approximate

Accuride Motorized Flat Panel

- Pre-mounted to backboard for easy installation
- Auto-reverse changes direction of movement when the reversal deck encounters an obstruction as the lift lowers
- Hole and slot pattern accommodates a wide variety of TV mounting brackets

Minimum inside cabinet dimensions (W x D x H):  
28" x 10" x 34" (overlay), 34 3/4" (inset)  
Maximum TV dimensions: 50" diagonal, 33 1/2" high  
Maximum weight capacity: 120 lbs.



CB Lift 050 - Quick Lift

Material: Steel

| Color | Item No.   |
|-------|------------|
| black | 421.68.390 |

Supplied With

Remote control  
Screws

Fixed Lid Bracket Kit

Material: Steel

| Color | Item No.   |
|-------|------------|
| black | 421.68.399 |