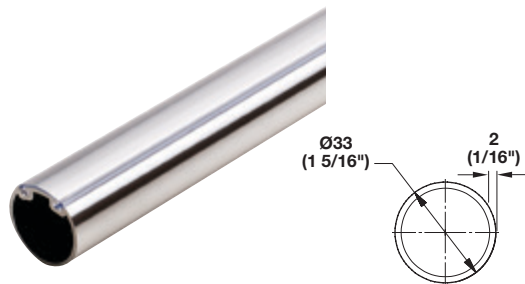


Synergy Elite



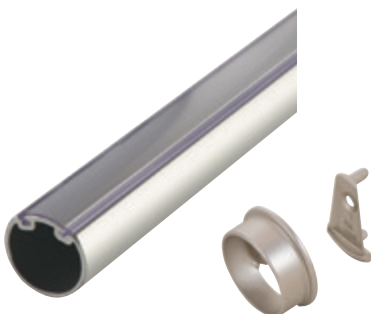
Wardrobe Tube

- Round with protective sleeve
- Insert on top
- Øx L: 33 x 2438 (1 5/16" x 8')

Material: Aluminum, anodized; Insert: Plastic

Finish	Insert	Item No.
polished chrome	clear	801.42.240
matt aluminum	clear	801.42.440
matt nickel	clear	801.42.640
matt gold	clear	801.42.040
dark oil-rubbed bronze	black	801.42.140
slate	black	801.42.340

Supplied With
12 pcs.



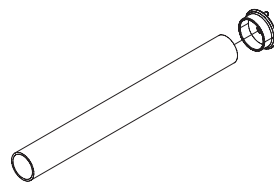
Wardrobe Tube with Supports

- Round, with protective insert on top
- Ø33 (1 5/16")

Material: Aluminum, anodized

Length	Polished Chrome	Matt Aluminum	Matt Nickel	Matt Gold	Dark Oil-Rubbed Bronze
451 (17 3/4")	801.42.255	801.42.465	801.42.655	801.42.055	801.42.155
603 (23 3/4")	801.42.256	801.42.466	801.42.656	801.42.056	801.42.156
756 (29 3/4")	801.42.257	801.42.467	801.42.657	801.42.057	801.42.157
908 (35 3/4")	801.42.258	801.42.468	801.42.658	801.42.058	801.42.158
1217 (47 15/16")	801.42.259	801.42.469	801.42.659	801.42.059	801.42.159

Supplied With
Tube
2 Supports



Wardrobe Tube Support

- Unique two-part design allows the support to fully surround the tube ends
- Connect the wedge shaped brackets into line bore holes and side supports onto the end of the tube, then side supports onto the wedge shaped brackets
- With two pins for 5 mm holes
- 32 mm (1 1/4") spacing with an additional screw hole for side panel mounting

Material: Zinc-plated

Finish	Item No.
polished chrome	803.39.210
matt aluminum	803.39.410
matt nickel	803.39.610
matt gold	803.39.910
dark oil-rubbed bronze	803.39.110
slate	803.39.710

Dimensional data not binding. We reserve the right to alter specifications without notice.

Flat head screws pages 11.132-11.133, 11.135

Dimensions in mm
Inches are approximate