

Häfele Wall Bed

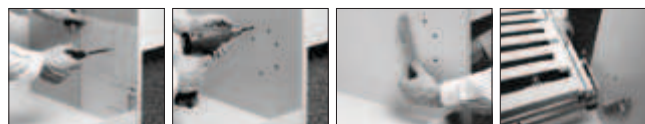
- For vertical folding beds
- Space saving: ideal for lofts, guest beds, home office, etc.
- Available in 3 sizes for mattresses:
 - Single/Twin: 75" x 39"
 - Double/Full: 75" x 54"
 - Queen: 80" x 60"
- Sturdy, torsion-free steel frame with concealed gas struts
- Includes integrated folding feet, which automatically extend as bed is opened and retract when closing
- With wood slatted mattress supports mounted in flexible sockets for comfort
- Recommended for relatively light foam mattresses, without box springs, 6"-10" thick
- Includes drilling template for proper alignment and installation of hardware
- Casework to be constructed by end user
- Inside depth of case: 470–600 mm (18 1/2"–23 5/8")

Note

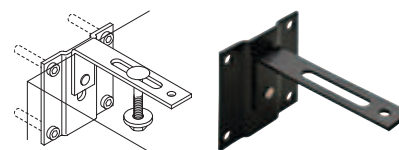
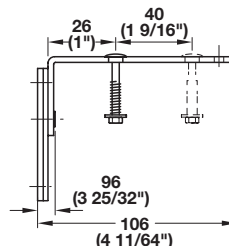
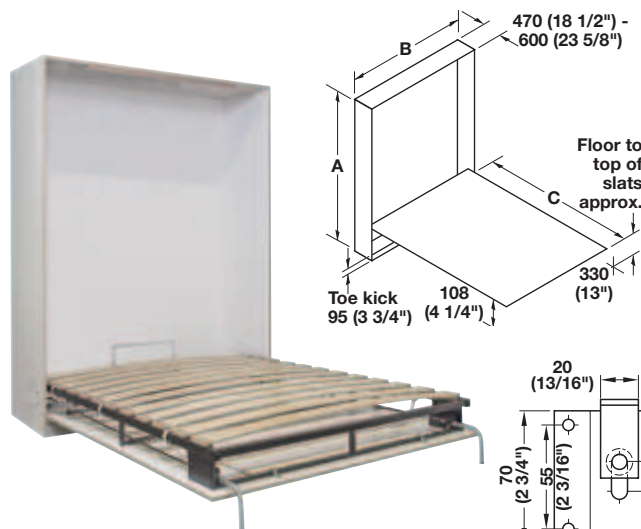
Successful and safe installation of fitting set and construction of casework requires a professional skill level. Casework to be constructed of high quality material (preferably high quality plywood), minimum thickness 3/4". Cabinet must be safely secured against tipping, 2 safety brackets are included.



Wall bed installation has never been so easy and safe. Häfele's Wall bed system comes complete with pre-mounted fittings and can be installed in 4 easy steps.



1. Mark drilling position on both panels with the aid of the included drilling template.
2. Drill 6 holes in each side panel.
3. Fasten the two support brackets with the screws provided.
4. Slide bed frame onto support brackets, tighten screws, and attach the front panel.



Wall Bed

Material: Steel; Finish: Frame: black epoxy; Folding feet: silver epoxy
Slats: Laminated Beech; Finish: natural lacquered

Cabinet construction inside dimensions					
Mattress sizes		A-inside height	B-inside width	C-protrusion	Item No.
Single/Twin	75" x 39"	2018 (79 7/16")	1051 (41 3/8")	1725 (68")	271.92.016
Double/Full	75" x 54"	2018 (79 7/16")	1432 (56 3/8")	1725 (68")	271.92.025
Queen	80" x 60"	2145 (84 7/16")	1584 (62 3/8")	1852 (73")	271.92.132

Supplied With

Complete frame
Mounting brackets and hardware
2 Safety brackets

3 Bed straps
Mattress retainer
Drilling template

General Weight Parameters

	Front panel weight	Mattress weight	Combined lifting capacity
Single/Twin	approx. 27 kg (60 lbs)	16–22 kg (35–48 lbs)	43–49 kg (95–108 lbs)
Double/Full	approx. 38 kg (84 lbs)	23–31 kg (50–68 lbs)	61–69 kg (134–152 lbs)
Queen	approx. 45 kg (100 lbs)	27–36 kg (60–80 lbs)	72–81 kg (160–180 lbs)

Note

Wall bed will not operate properly unless the above weight ranges are adhered to.

Additional "Safe" Safety Brackets

- Secures folding beds to wall
- The special design ensures that force is distributed evenly over all the mounting bolts offering adjustability for alignment
- The swiveling wall plate permits straightforward mounting in any position

Material: Steel

Color	Item No.
black	271.98.100

Supplied With

Mounting hardware

Note

To comply with DIN 68 873, foldaway beds must be installed with a minimum of two safety fittings.

Dimensions in mm
Inches are approximate