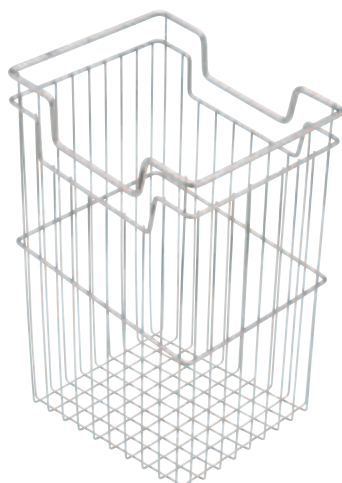
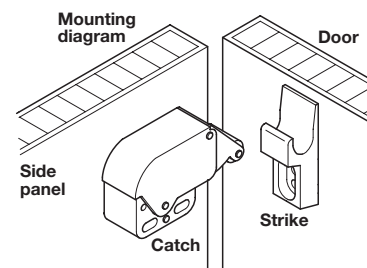


- The door is opened under spring tension by approximately 27° by simply applying pressure directly to the door itself
- The release function can be activated with light pressure on the door
- Door opens automatically
- To close door, light pressure against door is required
- Flap-ex flap hinge and mini latch are required for door operation



### Laundry Hamper

- With lowered handles, hangs on mounting rail
- For cabinet width: 300 mm (11 3/4")
- Capacity: 23.5 liters (6 gal.)
- W x D: 238 x 259 mm (9 3/8" x 10 3/16")
- Height: rear 365 mm (14 3/8")
- front 420 mm (16 1/2")

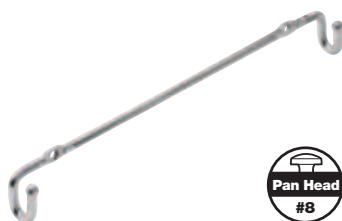
Material: Steel

Finish	Item No.
chrome-plated	540.02.112

- With lowered handles, hangs on mounting rail
- For cabinet width: 450 mm (17 3/4")
- Capacity: 39 liters (10 gal.)
- W x D: 388 x 259 mm (15 1/4" x 10 3/16")
- Height: rear 365 mm (14 3/8")
- front 420 mm (16 1/2")

Material: Steel

Finish	Item No.
chrome-plated	540.02.121

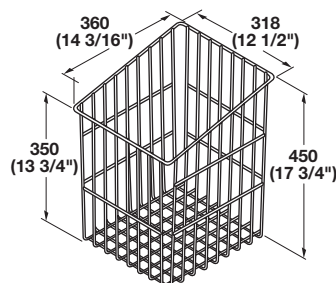
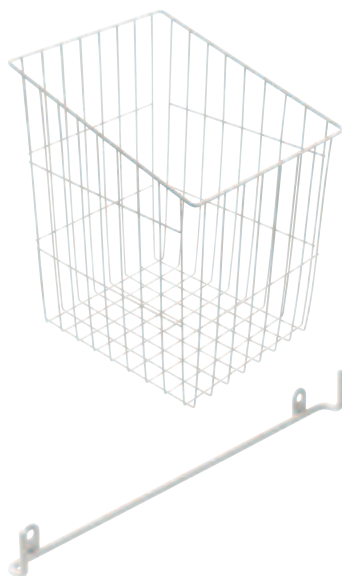


### Mounting Bracket

- For laundry hamper above, screw-mounted
- Width: 214 mm (8 7/16")
- Spacing between holes: 160 mm (6 19/64")

Material: Steel

Finish	Item No.
chrome-plated	540.02.194



### Hook-on Hamper, slanted

- For hanging on mounting bracket below
- Min. inside cabinet width: 343 mm (13 1/2")

Material: Steel wire, epoxy-coated

Color	Item No.
white	540.09.755

### Mounting Bracket

- For laundry hamper, screw-mounted
- W x D x H: 225 x 16 x 26 mm (8 7/8" x 5/8" x 1")
- Space between holes: 190 mm (7 1/2")

Material: Steel, epoxy-coated

Color	Item No.
white	540.06.996

Mini latch	page 4.74
Flap stay kit	page 4.74
Pan head screws	pages 11.134-11.135

Dimensions in mm  
Inches are approximate

### Laundry Hamper, slanted

- Mount by hanging on the back of a tilt-out door using the mounting bracket below
- Unique V notches indicate the location of the mounting bracket  
Height: 495 mm (19 1/2")

Material: Steel

Width	Depth	Chrome-plated	White powder-coated	Dark Oil-Rubbed Bronze powder-coated	Matt Nickel powder-coated	Matt Gold painted
432 (17")	341 (13 7/16")	547.42.231	547.42.731	547.42.131	547.42.631	547.42.831
	392 (15 7/16")	547.42.241	547.42.741	547.42.141	547.42.641	547.42.841
584 (23")	341 (13 7/16")	547.42.232	547.42.732	547.42.132	547.42.632	547.42.832
	392 (15 7/16")	547.42.242	547.42.742	547.42.142	547.42.642	547.42.842



### Bracket

- For laundry hamper above
- Screw-mounted with 4.0 mm screws  
Space between holes: 160 mm (6 5/16")  
W x D x H: 214 x 25 x 68 mm (8 7/16" x 1" x 2 11/16")

Material: Steel

Finish	Item No.
chrome-plated	547.42.990
white powder-coated	547.42.991
dark oil-rubbed bronze powder-coated	547.42.190
matt nickel powder-coated	547.42.690
matt gold painted	547.42.890

### Laundry Hamper Liner

- Creates a smooth, solid surface on the hamper bottom

Material: Plastic, translucent

Width	Depth	Item No.
432 (17")	341 (13 7/16")	547.95.431
	392 (15 7/16")	547.95.433
584 (23")	341 (13 7/16")	547.95.432
	392 (15 7/16")	547.95.434



### Laundry Hamper Bag

- Handles attached on both sides and elastic band around the top edge allow for easy removal  
Height: 495 mm (19 1/2")

Material: 100% Cotton; Color: cream

Width	Depth	Item No.
432 (17")	341 (13 7/16")	547.42.485
	392 (15 7/16")	547.42.486
584 (23")	341 (13 7/16")	547.42.487
	392 (15 7/16")	547.42.488

Dimensional data not binding. We reserve the right to alter specifications without notice.

Pan head screws

pages 11.134-11.135



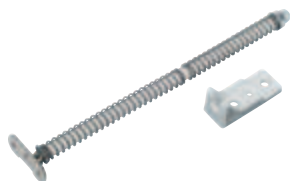
### Flap Stay Hamper Kit

Material: Steel

Finish/Color	Item No.
nickel-plated	547.42.993
black	547.42.994

#### Supplied With

Smove shock absorber  
 Smove adapter bracket  
 2 Duo flap stays  
 2 37 mm cabinet brackets  
 2 Wood door brackets  
 4 Varianta screws  
 6 Countersunk wood screws  
 2 Pan head screws  
 4 mm hex key



### FLAP-EX Flap Hinge

- Particularly suitable for installing in cabinets with laundry hamper
  - The door is opened approximately 27°
  - When the door is closed, the flap is pushed back into the cabinet and secured by the Mini Latch
- For cabinet sizes from 820 mm (32 5/16") high, 400 mm (15 3/4") wide inside cabinet depth of at least 270 mm (10 5/8")

Material: Steel; Bearing: Plastic

Finish	Item No.
nickel-plated	365.52.708

#### Supplied With

Angle bracket  
 Rod with plastic sleeve  
 2 Washers  
 2 Coil springs  
 Bearing

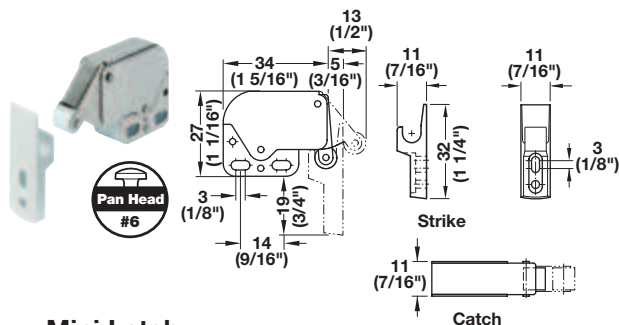
#### Note

Completely assembled, for installation of the front flap, 2 cup hinges and a Mini Latch are required, see below.

The hinge with the coil springs is designed to support a particle board front with the maximum dimensions 590 mm (23 1/4") high, 400 mm (15 3/4") wide and 19 mm (3/4") thick and a maximum weight when full of 5 kg (11 lbs).

#### Mounting Instructions

Screw the angle bracket to front panel and screw-mount bearing to cabinet side panel; see mounting drawing on the right. Push round rod into the screw-on bearing between the two coil springs.



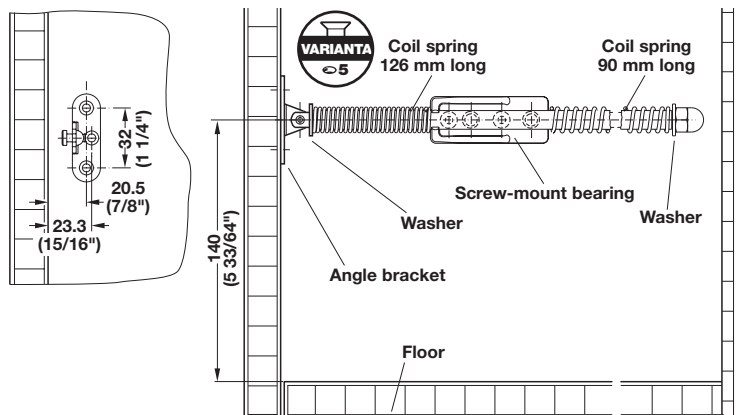
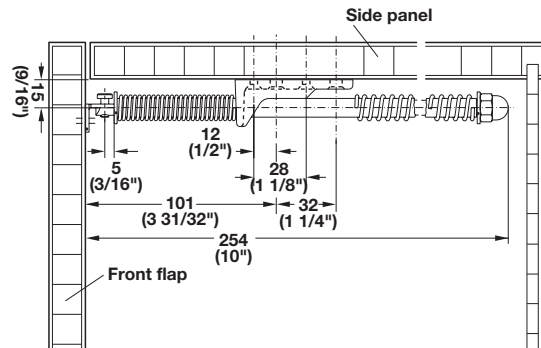
### Mini Latch

- Screw-mounted, with strike

Material: Catch: Steel; Strike: Plastic; Color: white

Finish	Item No.
nickel-plated	245.54.701

The door is opened by pushing against the door panel. The pressure triggers the release spring in the fitting and the door opens automatically. To close the door, slightly press against the door panel.



Varianta screws	page 11.142
Flat head screws	pages 11.132-11.133, 11.135
Pan head screws	pages 11.134-11.135