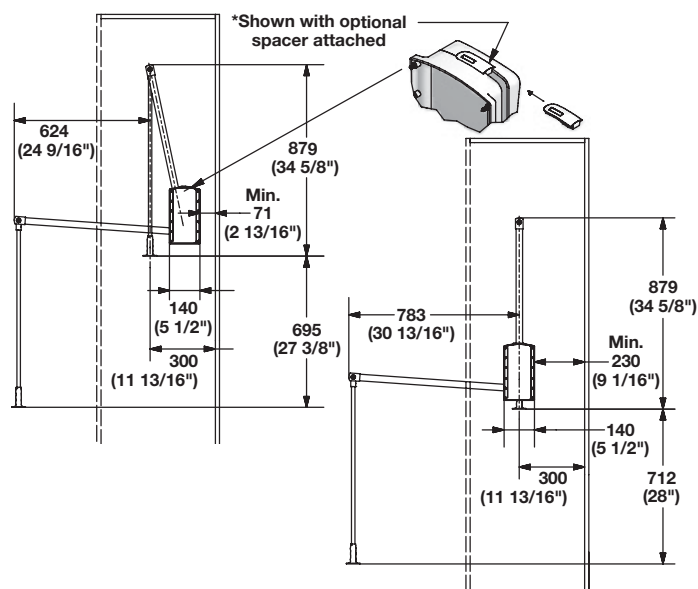
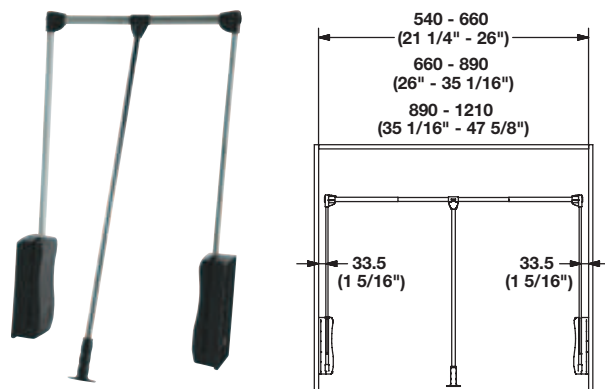


Lifts

- Adjustable width
- Optional poles are available for higher installation
- Ergonomic handle
- Reinforced T-bracket
- Bumpers attached to add protection to the housing when lowering the clothes bar
- Spacers included to provide optional distance between the back wall and the hangers

4



Wardrobe Lift

- For attachment to closet sides with screws
- Weight capacity: 12 kg (26 lbs.)
- Height: 839 mm (33 1/16")
- Wardrobe tubes: Ø22 mm, with adjustment feature for different widths of closets

Material: Arms and pole: Steel; Housing: Plastic

For inside closet widths	Chrome-plated/Black	Black powder-coated/Black
540 - 660 (21 1/4" - 26")	805.31.201	805.31.301
660 - 890 (26" - 35 1/16")	805.31.202	805.31.302
890 - 1210 (35 1/16" - 47 5/8")	805.31.203	805.31.303

Supplied With

Mounting hardware

Wardrobe Lift

- For attachment to closet sides with screws
- For inside closet widths: 890 - 1210 mm (35 1/16" - 47 5/8")
- Weight capacity: 15 kg (33 lbs.)
- Height: 839 mm (33 1/16")
- Wardrobe tubes: Ø22 mm (7/8"), with adjustment feature for different widths of closets

Material: Arms and pole: Steel; Housing: Plastic

Finish/Color	Item No.
chrome-plated/black	805.31.223
black powder-coated/black	805.31.323

Supplied With

Mounting hardware

Steel Pole

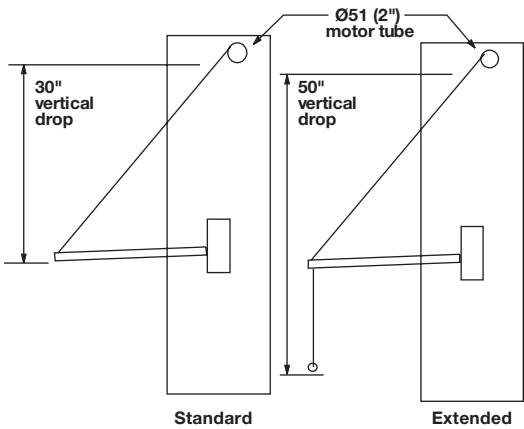
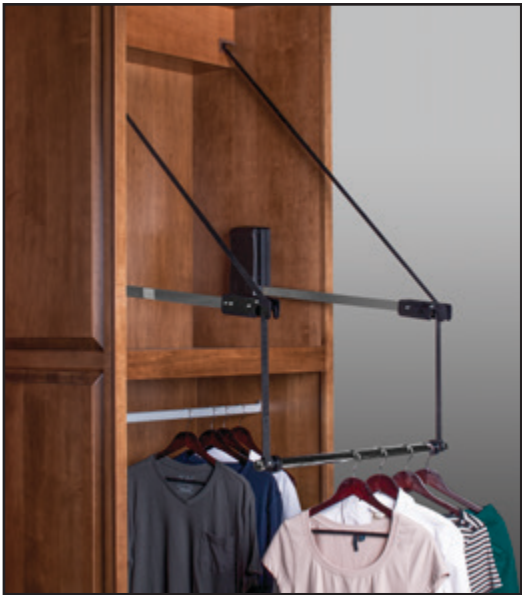
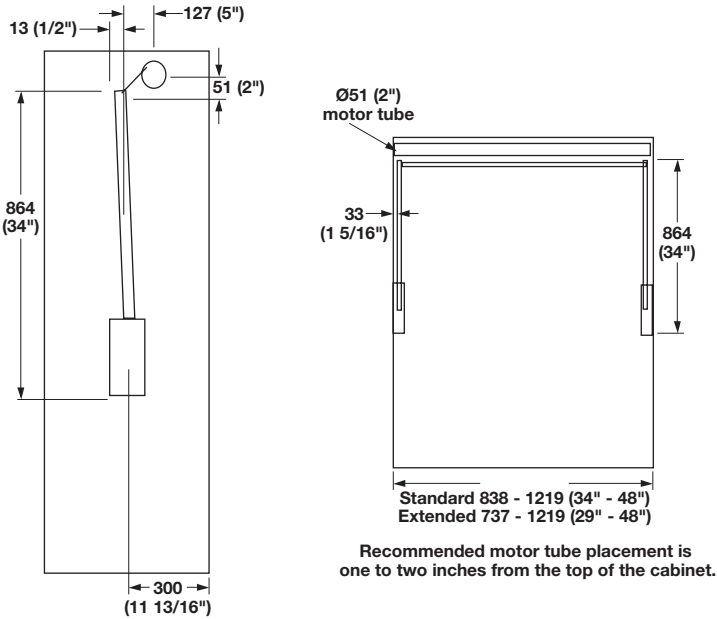
- For optional pole length of the 805.31.xxx wardrobe lifts
- Poles can replace the handle pole
- Two screw holes provided, one at each end for attachment to the clothes bar connector and the handle
- Pole can be cut to size but hole must be redrilled for either the clothes bar connector or the handle Ø16 mm (5/8")

Material: Steel; Finish: chrome-plated

Length	Item No.
1800 (70 7/8")	805.31.295
1524 (60")	805.31.296
1219 (48")	805.31.297

Motorized Lift

- Store items with the ease of motorization
- For use when greater weight capacity is required
- Store clothing in higher spaces when there is limitation in reach and/or strength
- Accessible without the use of a ladder



Motorized Wardrobe Lift

- Motorized 110v, electrical plug included but can be hardwired by electrician (220v available on special order)
- Wireless remote, programs upward and lower range of motion

Material: Arms and Cross Bars: Steel; Housing: Plastic

Lift	Width	Weight capacity	Vertical Lowering Range of clothes rail	Arm/Housing	Item No.
Standard	864 - 1219 (34"-48")	60 lbs.	762 (30")	chrome/black black/black	805.32.254 805.32.354
Extended	737 - 1219 (29"-48")	70 lbs.	1270 (50")	chrome/black black/black	805.32.262 805.32.362

Supplied With

Instructions to size the unit to desired width

Dimensional data not binding. We reserve the right to alter specifications without notice.