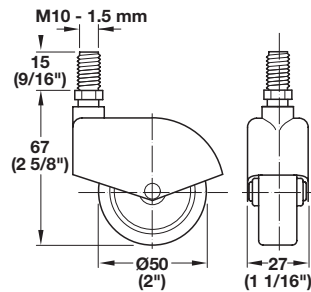


Enclosed Caster

- With mounting plate
 Weight capacity: approx. 50 kg (110 lbs.)

Material: Zinc Alloy; Finish: chrome-plated
 Wheel: Soft Plastic; Color: black

Version	Item No.
without brake	660.18.264
with brake	660.19.261



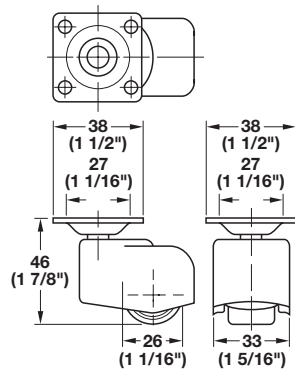
Enclosed Caster

- With threaded bolt, M10
 Weight capacity: approx. 50 kg (110 lbs.)

Material: Zinc Alloy; Finish: chrome-plated
 Wheel: Soft Plastic; Color: black

Version	Item No.
without brake	660.18.282
with brake	660.19.289

Dimensional data not binding. We reserve the right to alter specifications without notice.



Single Wheel Low Profile Roller Caster

- With 38 x 38 mm (1 1/2" x 1 1/2") mounting plate
 Wheel Ø26 (1 1/16")
 Weight capacity: approx. 75 kg (165 lbs.)

Material: Plastic

Color	Item No.
black, matt	661.31.315