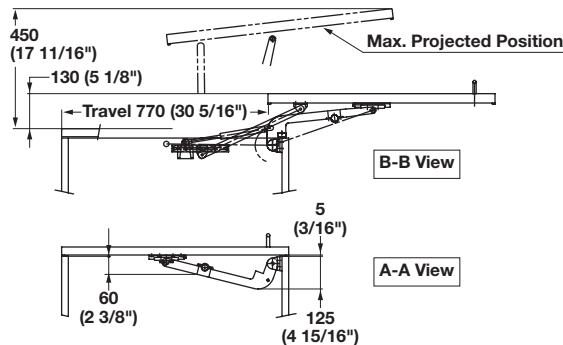


FAD 44

- Maximum door weight (per door): 35 kg (77 lbs.)
 Maximum Inside cabinet height: FAD 44 2340 mm (92 1/4"),
 FAD 44/L 2940 mm (115 3/4")
 If the overlay distance on the side plate is 25 mm (1") the door width should be 800 – 850 mm (29 1/2" – 33 1/2")
 Inside cabinet width: 750 – 800 mm (29 1/2" – 31 1/2")
 Door thickness: 24 – 38 mm (15/16" – 1 1/2")
- Door swings out laterally in a small radius compared to ordinary swing doors, ideal for tight space applications
 - Enables various opening styles and combinations
 - For overlay use
 - Built-in gas spring provides a smooth self opening and closing movement
 - Height adjustable by cutting arm connection bar
 - Applications: pantries, storage cabinets, closets, laundry room, etc.



Lateral Opening System

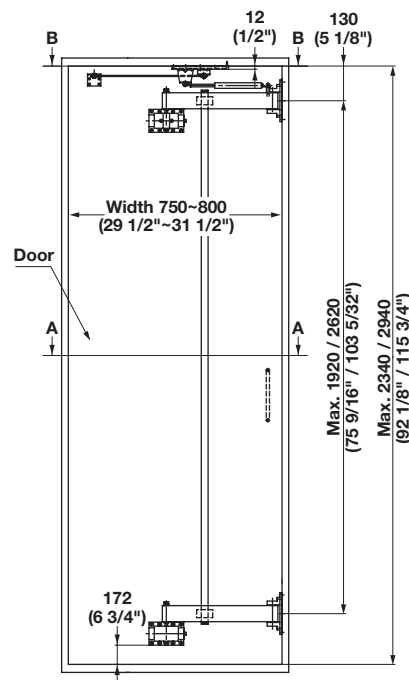
- For large size cabinets

Material: Steel; Finish: silver painted

System	Item No.
FAD 44	409.43.720
FAD 44/L	409.43.740

Note

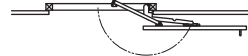
If the door is opening to the left, install your handle on the left half of the door. If the door is opening to the right, install your handle on the right half of the door.



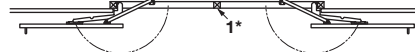
Left Hand Use



Right Hand Use



Right / Left Combination



Left Combination

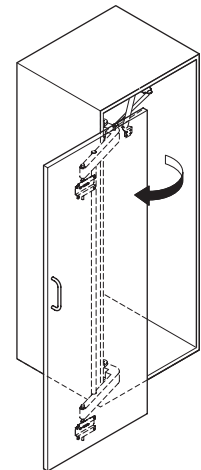
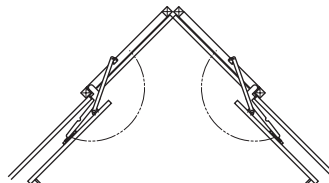


Right Combination



- 1* Vertical frame or door stoppers on floor for both doors required in center
 2* Min. 4 mm gap around door

Corner Use



Dimensional data not binding. We reserve the right to alter specifications without notice.