

Häfele MX



Railing Set

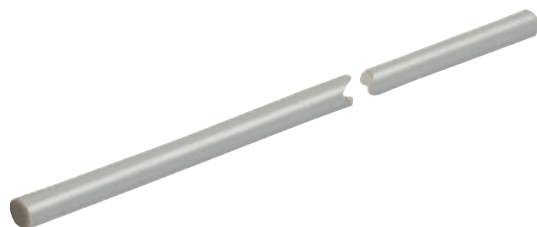
- Finish coordinates with profile
- Rails offer +/- 2 mm tilt adjustment
 Ø11 mm (7/16")

Material: Slides: Steel, epoxy-coated
 Adapters/Connector: Plastic

Length	Anthracite	Champagne	White
270 (10 5/8")	553.59.400	553.59.800	553.59.600
300 (11 13/16")	553.59.401	553.59.801	553.59.601
350 (13 3/4")	553.59.402	553.59.802	553.59.602
400 (15 3/4")	553.59.403	553.59.803	553.59.603
450 (17 11/16")	553.59.404	553.59.804	553.59.604
500 (19 11/16")	553.59.405	553.59.805	553.59.605
550 (21 5/8")	553.59.406	553.59.806	553.59.606
600 (23 5/8")	553.59.407	553.59.807	553.59.607
650 (25 9/16")	553.59.408	553.59.808	553.59.608

Supplied With

- 2 Rails
- 4 Front brackets: 2 press fit and 2 screw-mount
- 2 Rear panel holders



Cross Rail

- Cross rail is cut 68 mm (2 11/16") less than the inside cabinet width
 Length: 1102 mm (43 1/8")
 Ø11 mm (7/16")

Material: Steel, epoxy-coated

Finish	Item No.
anthracite	553.59.434
champagne	553.59.834
white	553.59.634

Note

Required for 120 x 40 mm Internal Drawer Bracket.

Cross Rail Holder

Material: Plastic

Finish	Item No.
anthracite	553.59.439
champagne	553.59.839
white	553.59.639

Cover Cap

Material: Plastic, light gray

Description	Anthracite	Champagne	White
blank	551.61.381	553.59.881	551.61.781
with Häfele logo	551.61.380	553.59.880	551.61.780

Supplied With

- 1 Right and 1 Left cover cap



Dimensional data not binding. We reserve the right to alter specifications without notice.