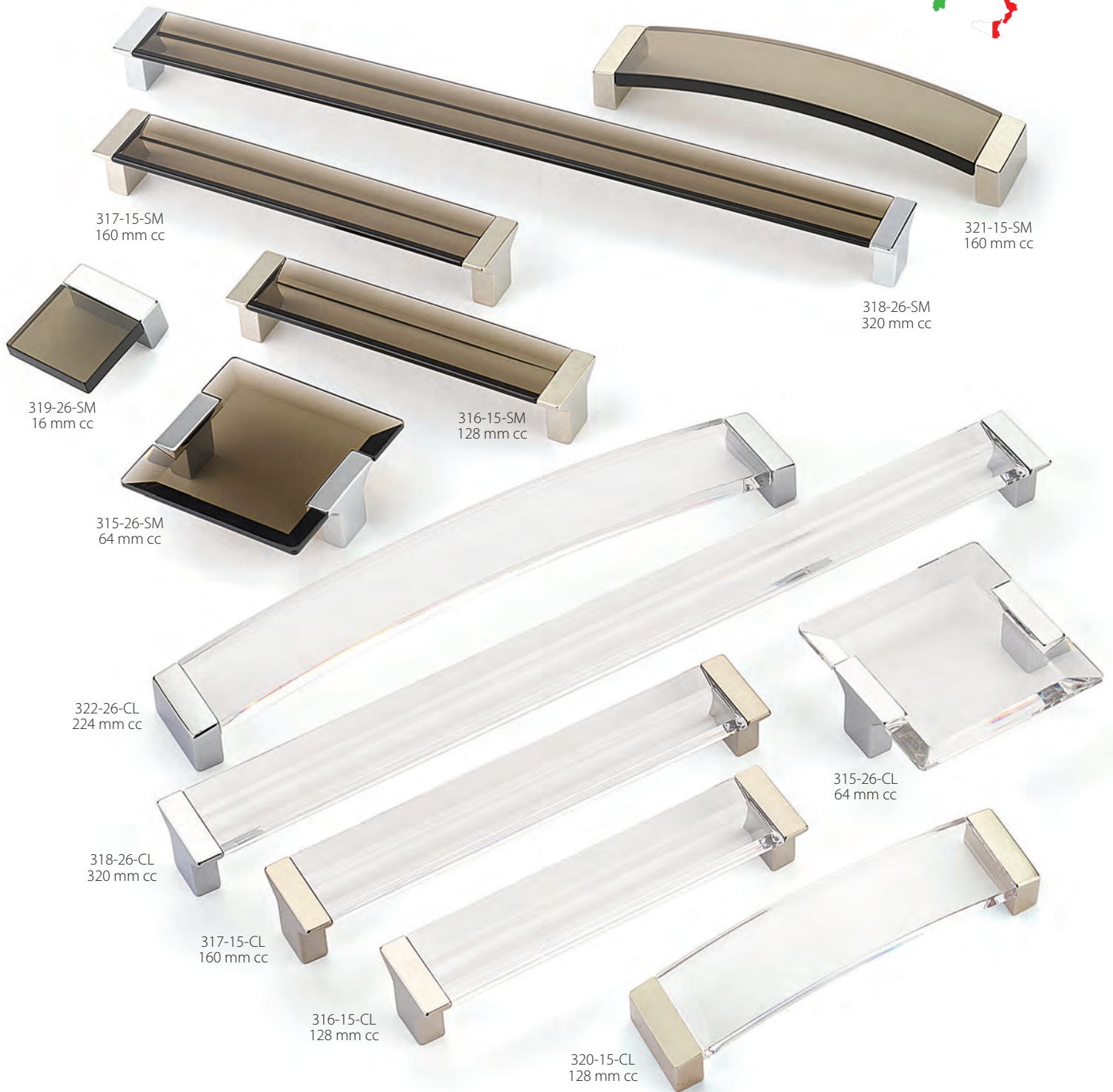


# POSITANO



317-15-SM  
160 mm cc

321-15-SM  
160 mm cc

318-26-SM  
320 mm cc

319-26-SM  
16 mm cc

316-15-SM  
128 mm cc

315-26-SM  
64 mm cc

322-26-CL  
224 mm cc

315-26-CL  
64 mm cc

318-26-CL  
320 mm cc

317-15-CL  
160 mm cc

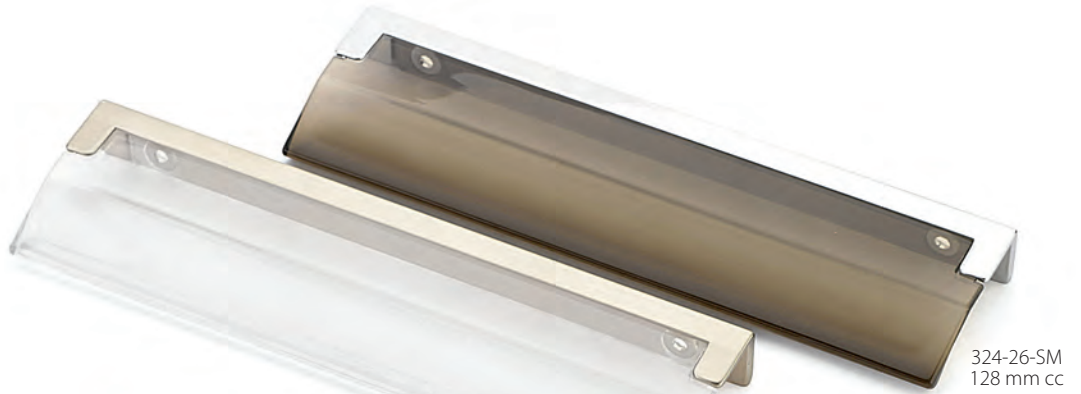
316-15-CL  
128 mm cc

320-15-CL  
128 mm cc

15-CL-Satin Nickel Clear ■ 15-SM-Satin Nickel Smoke  
26-CL-Polished Chrome Clear ■ 26-SM-Polished Chrome Smoke

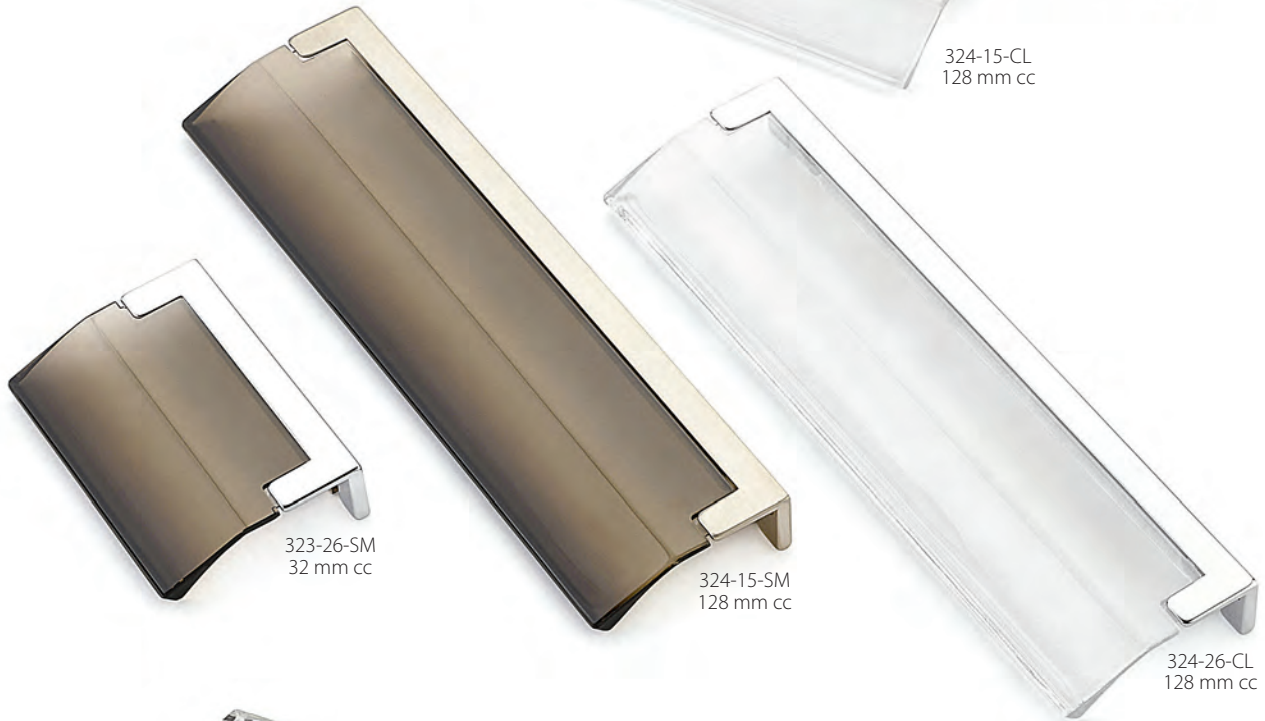
Items in this design group are not intended for use as appliance pulls.

# POSITANO



324-15-CL  
128 mm cc

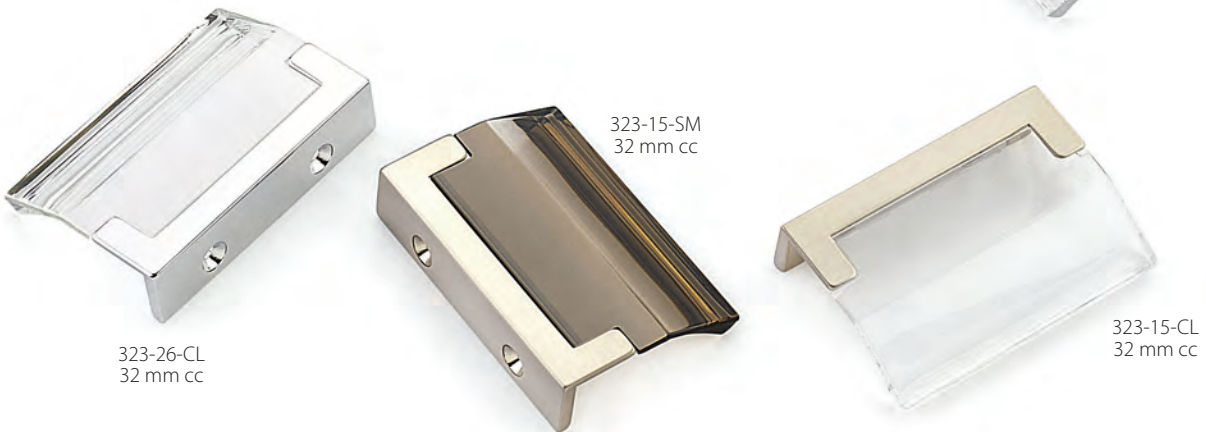
324-26-SM  
128 mm cc



323-26-SM  
32 mm cc

324-15-SM  
128 mm cc

324-26-CL  
128 mm cc



323-26-CL  
32 mm cc

323-15-SM  
32 mm cc

323-15-CL  
32 mm cc

15-CL-Satin Nickel Clear ■ 15-SM-Satin Nickel Smoke  
26-CL-Polished Chrome Clear ■ 26-SM-Polished Chrome Smoke



*We recommend Positano edge pulls be installed on flat panel cabinets with a maximum thickness of 3/4" in order to achieve proper clearance. Edge pulls attach from inside drawer or cabinet face.*