

## SPECTRUM KNOBS & PULLS ~ 7 SIZES

Matching Appliance Pulls - see page 201

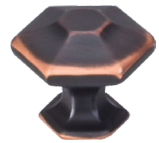


12" cc Appliance Pull  
Polished Nickel

6<sup>5</sup>/<sub>16</sub>" cc Pull  
Umbrio

5<sup>1</sup>/<sub>16</sub>" cc Pull  
Sable

3<sup>3</sup>/<sub>4</sub>" cc Pull  
Brushed Satin Nickel



1<sup>1</sup>/<sub>4</sub>" Knob  
Umbrio



1<sup>1</sup>/<sub>8</sub>" Knob  
Brushed Satin Nickel



1" Knob  
Polished Chrome

	BSN	PC	PN	SAB	UM
1" Knob	TK711BSN	TK711PC	TK711PN	TK711SAB	TK711UM
1 <sup>1</sup> / <sub>8</sub> " Knob	TK712BSN	TK712PC	TK712PN	TK712SAB	TK712UM
1 <sup>1</sup> / <sub>4</sub> " Knob	TK713BSN	TK713PC	TK713PN	TK713SAB	TK713UM
3 <sup>3</sup> / <sub>4</sub> " cc Pull	TK714BSN	TK714PC	TK714PN	TK714SAB	TK714UM
5 <sup>1</sup> / <sub>16</sub> " cc Pull	TK715BSN	TK715PC	TK715PN	TK715SAB	TK715UM
6 <sup>5</sup> / <sub>16</sub> " cc Pull	TK716BSN	TK716PC	TK716PN	TK716SAB	TK716UM
12" cc Appliance Pull	TK719BSN	TK719PC	TK719PN	TK719SAB	TK719UM

## CABINET LATCHES



Brushed Satin Nickel



Polished Chrome



Polished Nickel



Sable



Umbrio

	<b>NEW</b> AG	BSN	<b>NEW</b> HB	PC	PN	SAB	UM
1 <sup>15</sup> / <sub>16</sub> " Cabinet Latch	TK729AG	TK729BSN	TK729HB	TK729PC	TK729PN	TK729SAB	TK729UM

Drilling pilot holes recommended for Latches

Part Number is specific to shape and finish. cc = measurement center-to-center between the screw holes.

NOTE: For detailed dimensions such as overall length, height, base width, etc. see price list or visit [TopKnobs.com](http://TopKnobs.com).