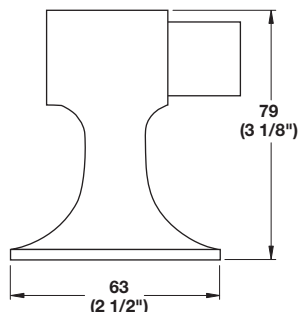


4



### Model SF210

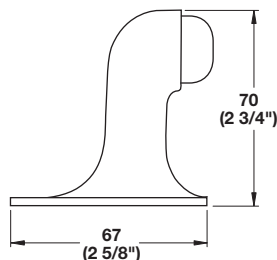
- ANSI/BHMA A156.16, L12131

Material: Cast Brass or Bronze; Bumper: Durable Vinyl

Finish	Item No.
605 brass, polished (US3)	937.94.061
606 brass, satin (US4)	937.94.062
612 bronze, satin (US10)	937.94.063
613 bronze, oil rubbed (US10B)	937.94.064
625 chromium, polished (US26)	937.94.066
626 chromium, satin (US26D)	937.94.067

#### Supplied With

Fasteners



### Model SF220

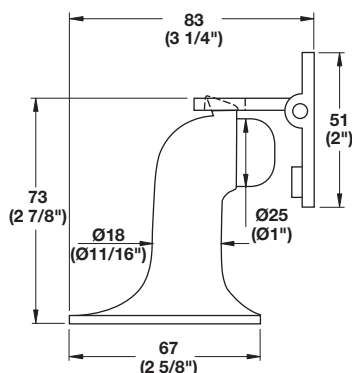
- ANSI/BHMA A156.16, L12131

Material: Cast Brass or Bronze; Bumper: Durable Vinyl

Finish	Item No.
605 brass, polished (US3)	937.94.071
606 brass, satin (US4)	937.94.072
612 bronze, satin (US10)	937.94.073
613 bronze, oil rubbed (US10B)	937.94.074
625 chromium, polished (US26)	937.94.076
626 chromium, satin (US26D)	937.94.077

#### Supplied With

Fasteners



### Model SF320

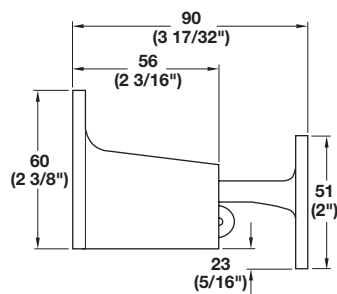
- Stop with hinged manual holder
- ANSI/BHMA A156.16, L11371

Material: Cast Brass or Bronze; Bumper: Durable Vinyl

Finish	Item No.
605 brass, polished (US3)	938.43.001
606 brass, satin (US4)	938.43.002
612 bronze, satin (US10)	938.43.003
613 bronze, oil rubbed (US10B)	938.43.004
625 chromium, polished (US26)	938.43.006
626 chromium, satin (US26D)	938.43.007

#### Supplied With

Fasteners



### Model SW410

- Wall-mounted in high traffic areas
- ANSI/BHMA A156.16, L11291

Material: Die-Cast Brass or Bronze; Durable Hardened Rubber

Finish	Item No.
605 brass, polished (US3)	938.43.011
606 brass, satin (US4)	938.43.012
612 bronze, satin (US10)	938.43.013
613 bronze, oil rubbed (US10B)	938.43.014
625 chromium, polished (US26)	938.43.016
626 chromium, satin (US26D)	938.43.017

#### Supplied With

Fasteners

Dimensions in mm  
Inches are approximate