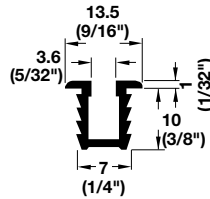


- Maximum door weight: 12 kg (26 lbs.)
- Fittings form combinations for sliding doors with upper and lower guides
- Guide track is designed to be used both at the top and bottom of the cabinet
- Bottom roller guide glides friction-free in the track recess

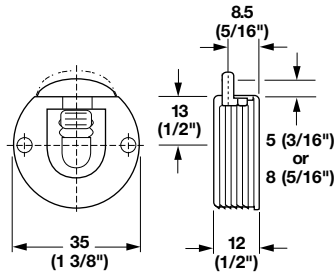
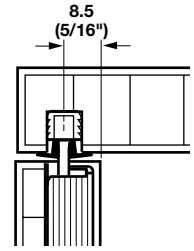


Guide Track

- Press-fit
- With flanged edges and barbed shoulders
- For top and bottom of cabinet

Material: Plastic

Color	Length	Item No.
brown	2.5 m (8' 2 7/16")	404.14.111
	3 m (9' 10 1/8")	404.14.133
white	2.5 m (8' 2 7/16")	404.14.701
	3 m (9' 10 1/8")	404.14.713

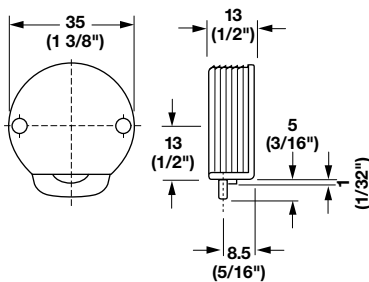
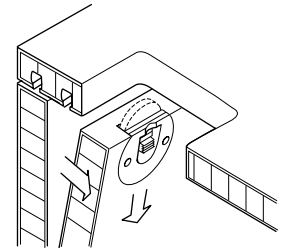


Upper Guide

- Press-fit
- Lockable at 5 and 8 mm

Material: Plastic

Color	Item No.
brown	404.19.118
white	404.19.716

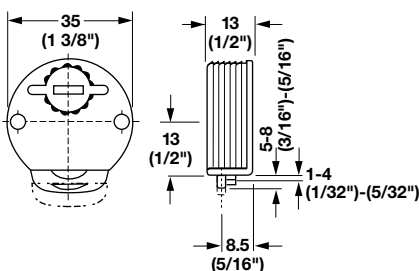


Lower Guide

- Press-fit
- With steel spindle, nylon roller and guide

Material: Plastic

Color	Item No.
brown	404.20.120
white	404.20.728



Lower Guide

- Press-fit
- With vertically adjustable steel spindle, nylon roller and guide

Material: Plastic

Color	Item No.
brown	404.20.139
white	404.20.737

Dimensional data not binding. We reserve the right to alter specifications without notice.