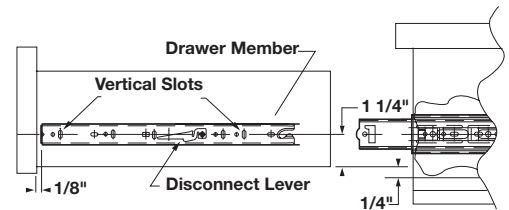
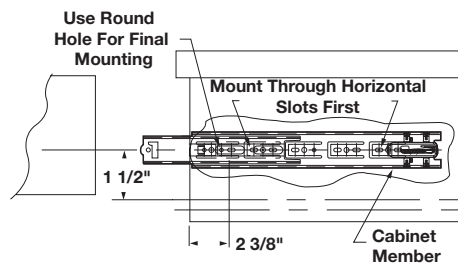
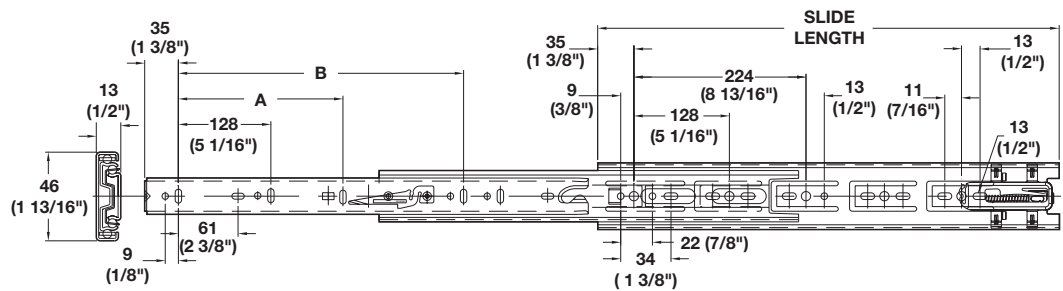


Accuride Full Extension, Telescopic

- Weight capacity: 45 kg (100 lbs.)/pair
- Heavy duty hold-in detent
- Self-closing with a pull force x 2 of standard 3832SC slide
- Bounce back is eliminated
- Keeps drawer front aligned
- Features low profile for shallow drawers
- Lever disconnect
- For optimal performance make drawers 1 1/16" (27 mm) less than cabinet opening



8

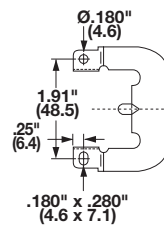
3832HDSC - Side Mounted

Material: Steel, plated

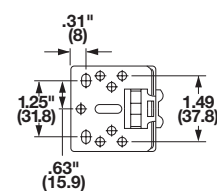
Installed and Extension Length	Zinc	Black
12" (300)	422.97.930	422.97.330
14" (350)	422.97.935	422.97.335
16" (400)	422.97.940	422.97.340
18" (450)	422.97.945	422.97.345
20" (500)	422.97.950	422.97.350
22" (550)	422.97.955	422.97.355
24" (600)	422.97.960	422.97.360
26" (650)	422.97.965	422.97.365



Front Clip-on Bracket



Rear Metal Bracket



Face Frame Brackets

Material: Steel

Finish	Item No.
zinc-plated	422.04.000



Dimensional data not binding. We reserve the right to alter specifications without notice.