

Grass TIOMOS

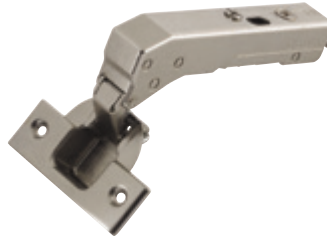
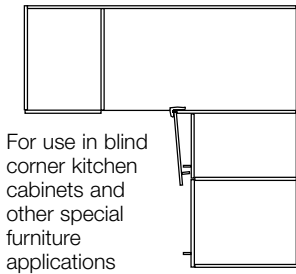
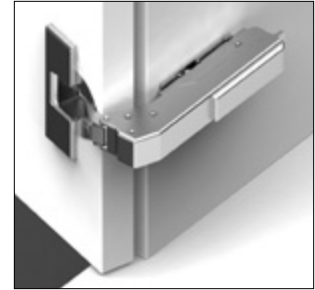
- Soft close or self close
- Screw or dowel mounted
- For blind corner applications
- For door thickness up to 24 mm (61/64"); for door thickness over 24 mm (61/64"), a trial mounting is recommended

Note

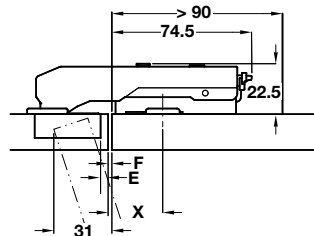
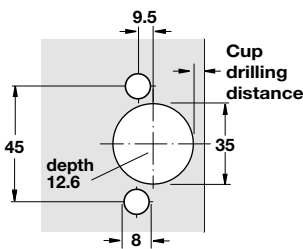
Dimensions in drawings and tables are calculated using factory settings and for mounting plate height 3 mm (1/8").

soft&silent)))

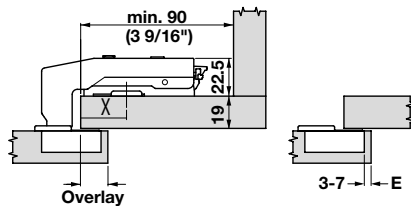
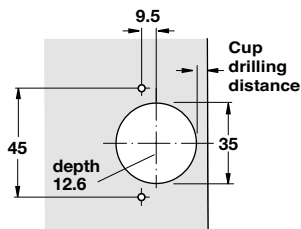
Opening angle: **110°**



Dowel mounted



Screw mount

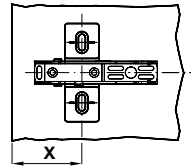


Blind Corner Hinge, Inset

Material: Steel; Hinge Arm: Zinc Alloy; Finish: nickel-plated

Version	Screw	Dowel
soft close	348.37.800	348.37.810
self close	348.37.600	348.37.610

Cross plate



Inline plate

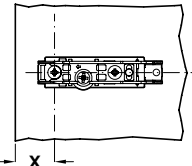


Table for Cross Plate

Dim X	Drilling Distance E			
	4	5	6	7
28	1	0		
27	2	1	0	
26	3	2	1	0
Door reveal F				

Table for Inline Plate

Dim X	Drilling Distance E			
	4	5	6	7
11	1	0		
10	2	1	0	
9	3	2	1	0
Door reveal F				

Blind Corner Hinge, Overlay

Material: Steel; Hinge Arm: Zinc Alloy; Finish: nickel-plated

Version	Screw	Dowel
soft close	348.37.820	348.37.830
self close	348.37.620	348.37.630

Dim X	Drilling Distance E				
	3	4	5	6	7
30	18	19	20	21	22
29	17	18	19	20	21
28	16	17	18	19	20
27	15	16	17	18	19
28	14	15	16	17	18
Door overlay					

Dim X	Drilling Distance E				
	3	4	5	6	7
13	18	19	20	21	22
12	17	18	19	20	21
11	16	17	18	19	20
10	15	16	17	18	19
9	14	15	16	17	18
Door overlay					