



EOD6400-SF

Features and Assembly

64" Outdoor Digital Sigange LCD

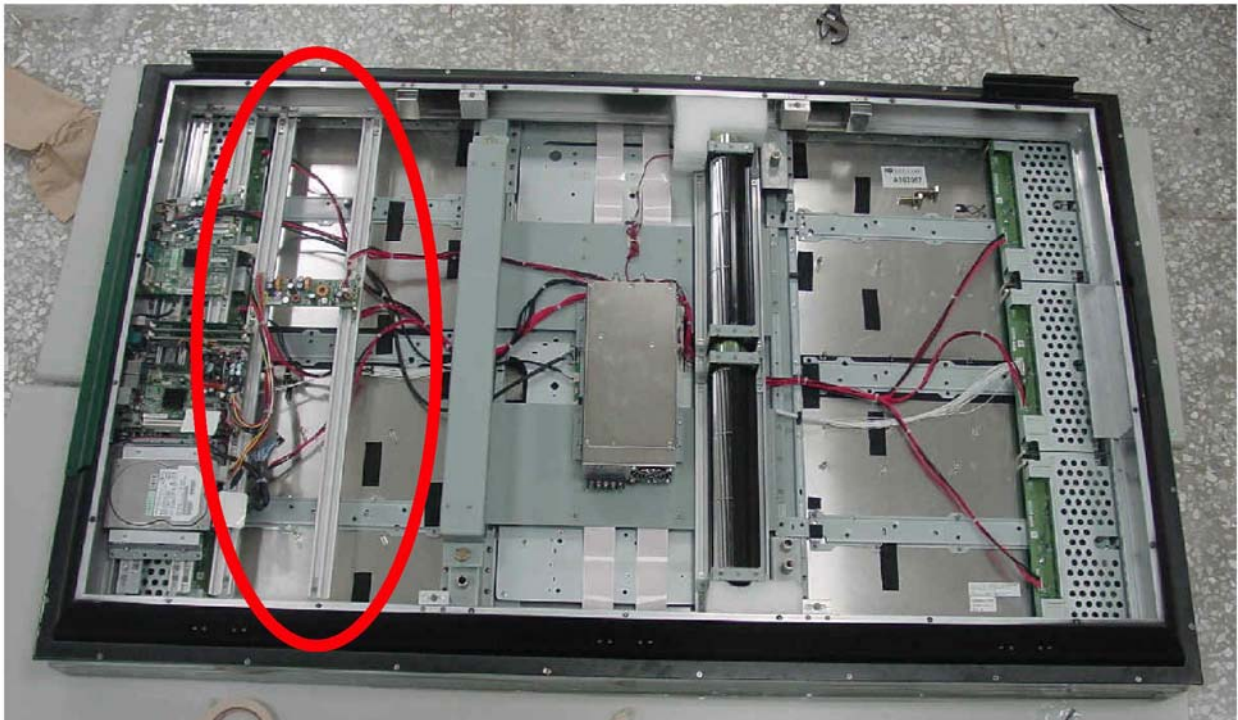
One-Piece Flow Lean Management – Do it Right The First Time!



i-Tech Company LLC
TOLL FREE: (888) 483-2418 • EMAIL: info@i-techcompany.com • WEB: www.i-techcompany.com

Features

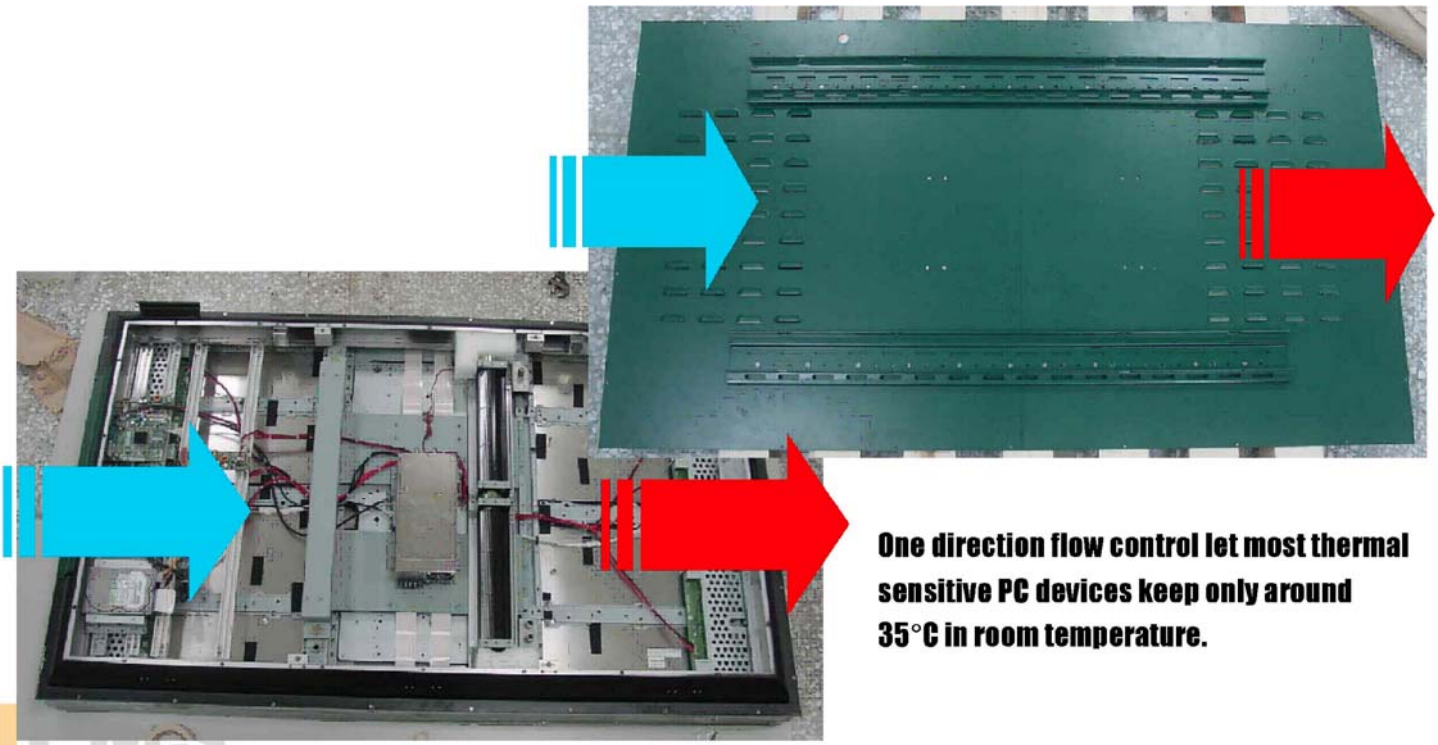
- Adjustable Placement



Components and PC parts are mounted by aluminum rails and picks which could be easily moved and remounted.

Features

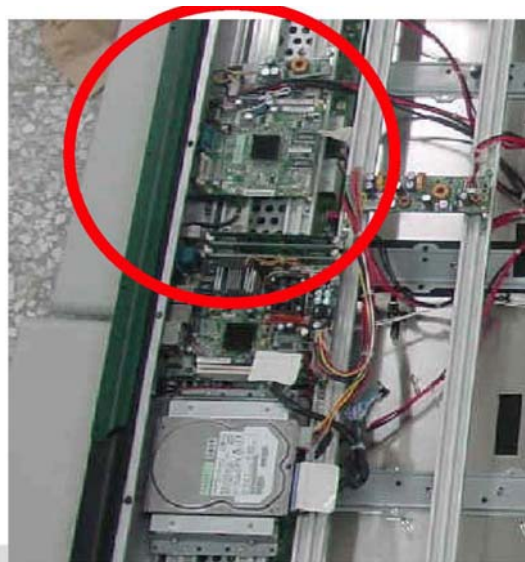
- One Direction Flow Control



One direction flow control let most thermal sensitive PC devices keep only around 35°C in room temperature.

Features

- AD Board Integration Provides Hardware OSD Interface, Remote Control and Auto-dimming Function



Auto-dimming and IR remote receiver
(will be removed to front bezel next Ver.)

Features

- Aluminum Structure



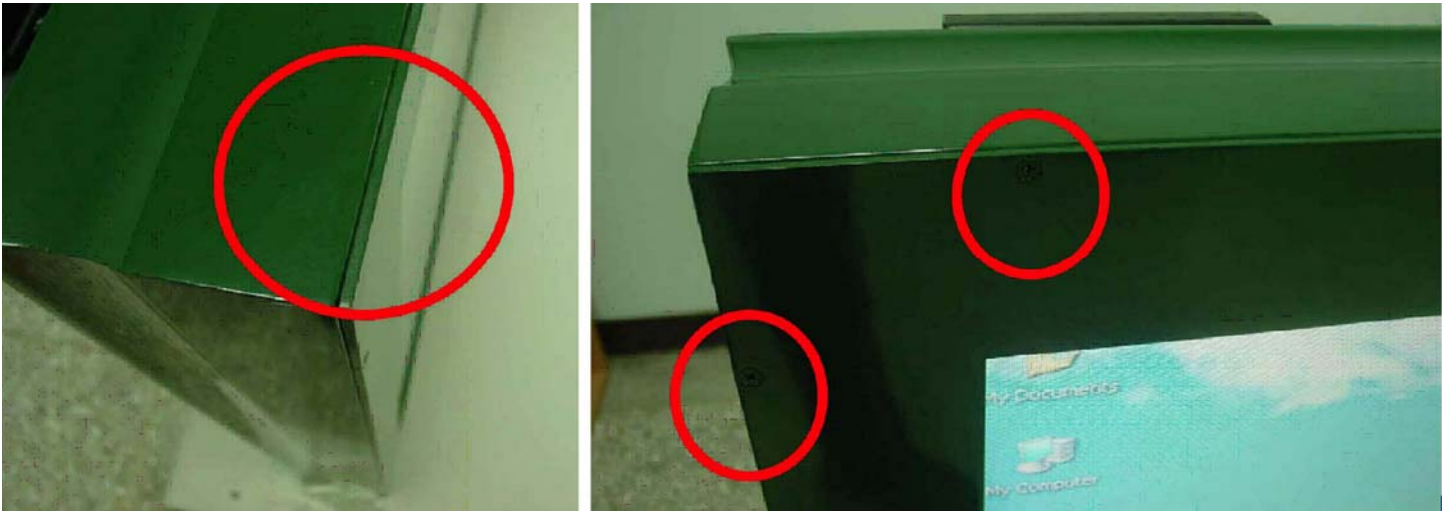
Different from normal metal sheet products, ICP provide this sample in aluminum structure which can sustain more mechanical stress and stylish outside looking.

Features

- Easy Replacement for Cover

We use reinforced acrylic plate as EOD6400-SF front cover. This kind of material is very suitable for optical features and tough operating environment. The front cover also meet the IP64 Spec. which can resist life dust and water splitting.

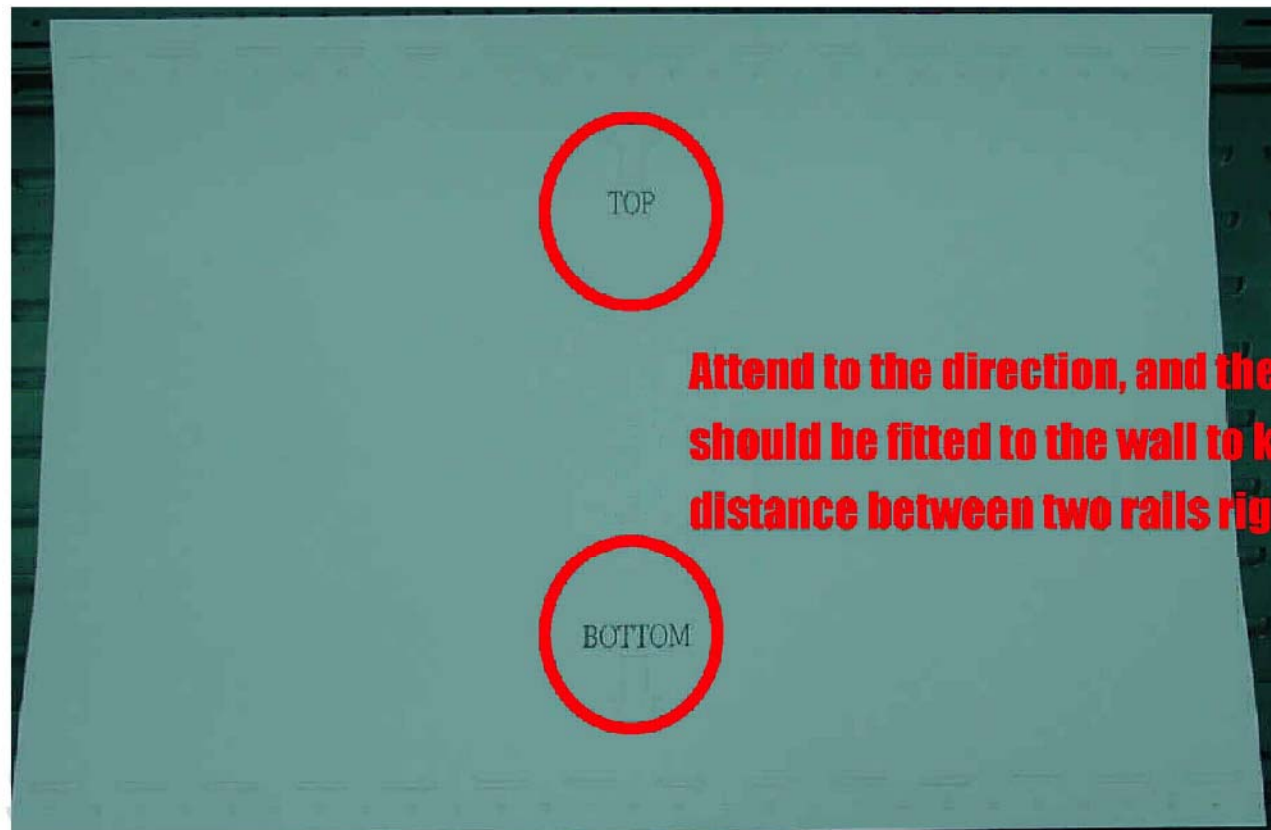
We also built this front cover with easy replacement structure which let user change the cover via several screws.



Mount Steps

- Place Mounting Rail Graph on Wall

Mounting Rail Graph is attached in accessories pack.



Mount Steps

- Drill the Mounting Hole According to the Graph



Drill the hole according to the graph properly, at least 15 holes per rail

Mount Steps

- Assemble the Rails on Hole

Top Rail



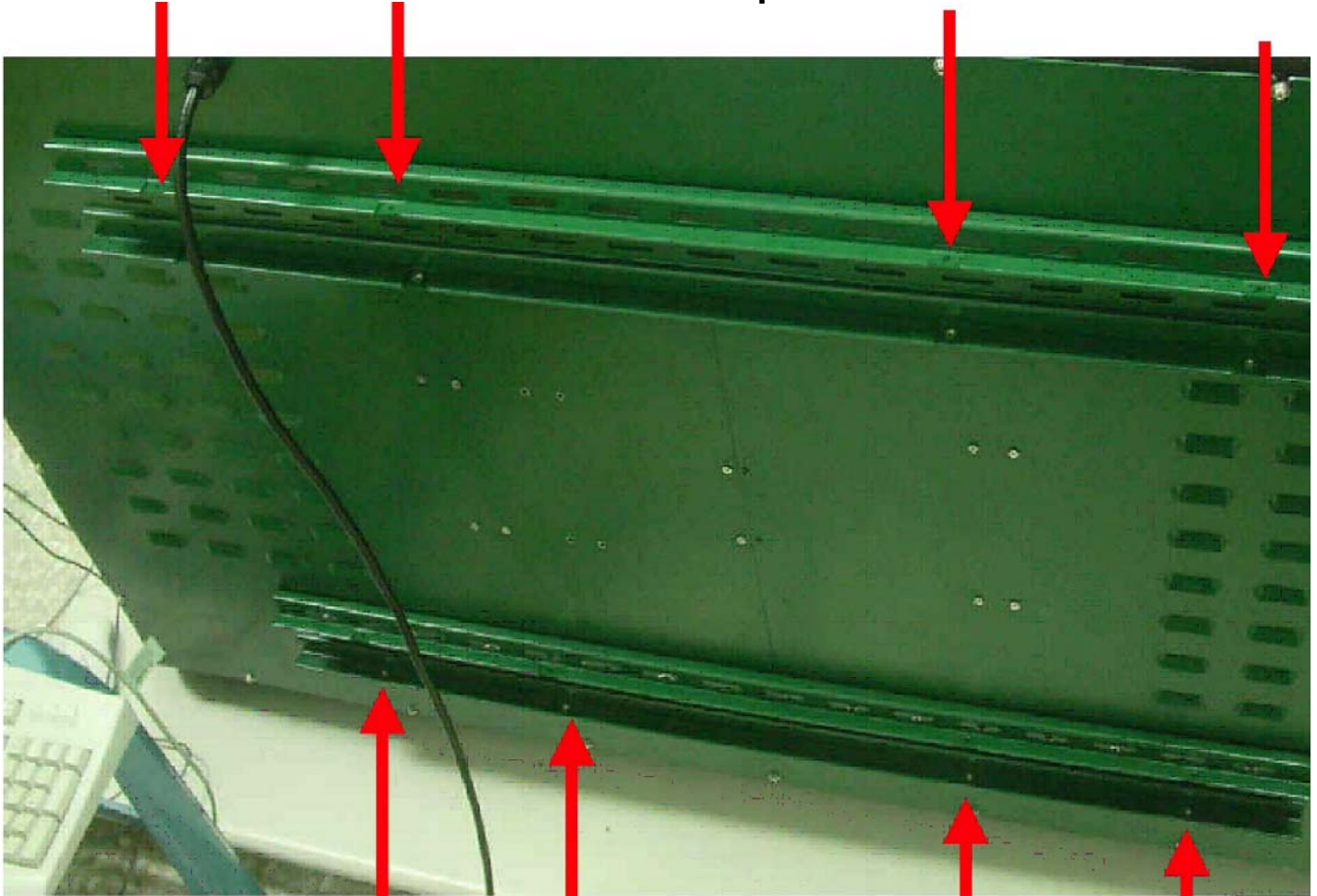
**Note the difference
between two rails.**

Bottom Rail



Mount Steps

- Mount EOD6400-SF on Wall and put the Fix Screws

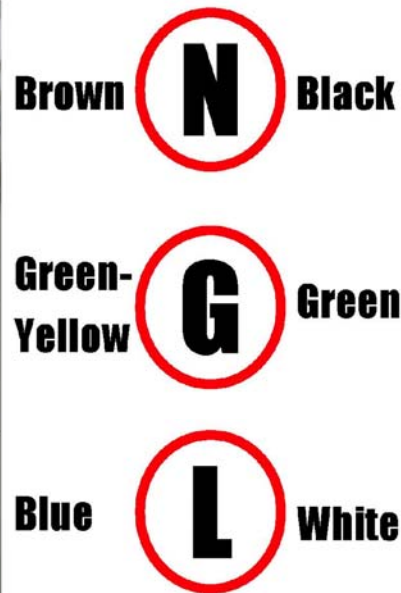


Reference to another graph in accessories pack. Screw on the upper side of the top rail and down side on the bottom rail.

Mount Steps

- **Connect Power Line**

You can change the power connector or just connect the US type power cord in accessories pack.



Mount Steps

- **Configure PC Status**

We pre-installed the Windows XP test version in this system with a 30 days trial serial number. If user want to install other OS, the device drivers are attached in accessories pack.

