

## CEL-6704 dB12 Version 2 Windows Software for CEL-300 & 400 Dosimeters

### Introduction

The CEL-6704 software is designed to be used in conjunction with the CEL-320 and 360 range of noise dosimeters and sound level meters. It provides additional graphing capabilities over and above the standard CEL-6702 (dB10) software that is provided with the CEL-320 model.

The dB12 software version 2.0 is used to provide a download capability for the CEL-320 and 360 dosimeter family following completion of measurement Runs.

Simply connect the dosimeter to the serial comm. port of a standard computer running MS Windows and choose from a list of up to 50 stored Runs. Runs can be downloaded one at a time or in groups and saved in a datafile directory for further inspection and manipulation.

The overall Run data can be viewed in a standard report format that allows the user to inspect the noise exposure measurements quickly and easily.

When the measurements have been made with a CEL-360 Logging dosimeter up to ten profiles may be recorded and inspected to see the time history of the varying levels.

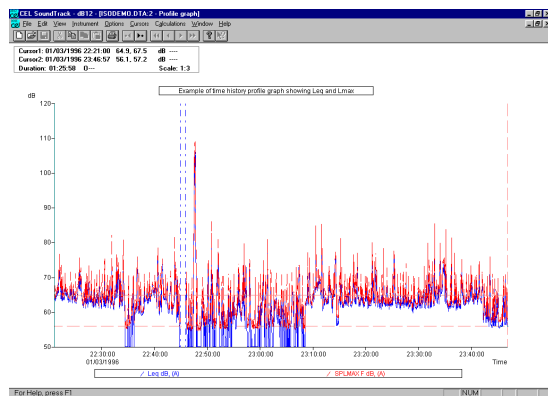
A built in word processor is provided to allow for the simple preparation of report ready documents containing all the necessary graphics and text.

The software also allows the dosimeters to be configured from the computer. A setup file can be sent to the instrument to carry out measurements according to user specified methodologies.

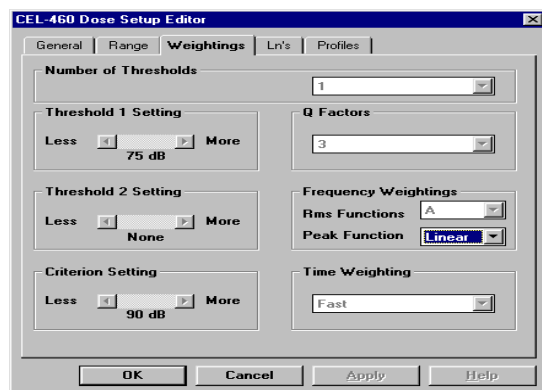
Up to 13 user setups are available to transmit to an instrument together with the seven factory default setups.

### Key Features

- ❑ Windows 95, 98, 2000 compatible
- ❑ provides download capability of the results at the end of a run
- ❑ shows the noise results as graphs or text screens
- ❑ time history profile noise level data can be exported to an external spreadsheet package such as MS Excel
- ❑ recalculate time average levels defined by cursors
- ❑ calculate any percentile values from histogram data
- ❑ load user defined setups to the instruments for special measurements
- ❑ set delay start and stop timers to control up to 16 separate runs
- ❑ change Y axis scale and alter the colour scheme to suit preferences
- ❑ save customised reports in RTF format for import into word processors such as MS Word



Example of the time history profile graph showing two noise parameters Leq and Lmax simultaneously



Example of the instrument setup screens

## ORDERING INFORMATION

CEL-6704V2      dB12 software for MS Windows for the CEL-320 and 360 (and CEL-420 and 460) instruments (standard for CEL-360, optional for the CEL-320)

C6671/2          Connecting cable from CEL-320/360 to computer (9 way D type connector) 6 ft (2m)

Note that the C6671/2 cable is provided as a standard item with all CEL-320 & 360 model instruments

The CEL-6704 version 2.0 software is also compatible with the earlier CEL-420 and 460 Noise dosimeters and CEL-424 and 464 sound level meters and CEL-422/426 and 462/466 Intrinsically Safe instruments