

## CEL-6830 dB30 Software for the CEL-430 meters

### Introduction

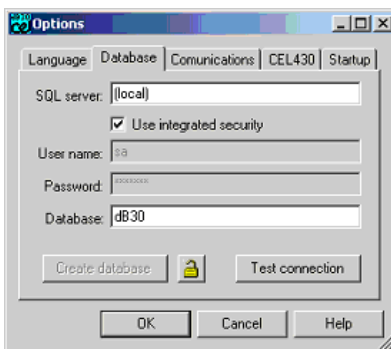
The CEL-430.A sound level meter is a multi purpose wide dynamic range sound level meter with memory for up to 99 separate measurement runs. The CEL-6830 software package is the complimentary product to facilitate the download of stored runs and the upload of setups for the CEL-430 noise meter. Comprehensive organizational capabilities allow the software to be customized in a number of ways to suit the requirements of the user. Standard OSHA, ISO, DIN setups are provided with displays to show only those results in tabular format.

### Applications

The CEL-430 is a new design of sound level meter that features an easy to use menu system to control the meter's operation. Pre programmed setups for the most popular measurement protocols are already built in to the meters with 2 additional user selectable configurations that can be uploaded from the pc and saved in the meter for later use. The setups can be labeled and configured to display up to 9 different noise parameters from a total of 33 simultaneous measurements available for every run. All of the 33 parameters are available at the end of a run and are downloaded to the database where they can be displayed or exported as a CSV file to a spreadsheet or word processor.

### Ordering information

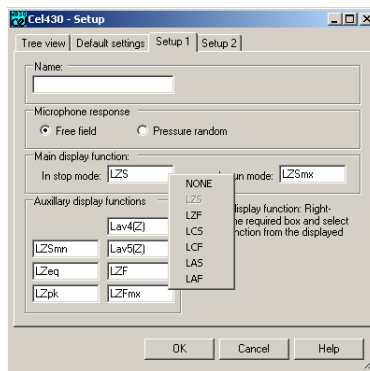
CEL-6830	dB30 database software supplied on CD ROM suitable for MS™ Windows™ XP, 2000 and NT
C6724	Serial communications cable from CEL-430 to 9 way RS232 port on pc
Minimum pc requirements	Pc with Pentium III processor - 1 GHz, 128 MB memory, 20 GB hard drive, CDROM drive, spare 9 way RS232 communication port



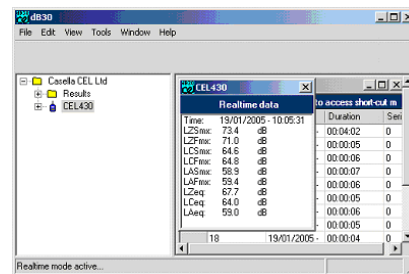
setting up a new database ready to store results from CEL-430

### Key benefits

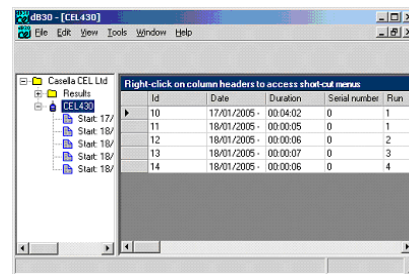
- Powerful database structure
- Display all of the measured parameters for all runs
- Download the results from CEL-430 sound level meters and organize into specific folders
- Upload custom user setups as a configuration file to a CEL-430 sound level meter
- Export sets of run data into other Windows programs
- View and save live noise measurements in real time to any valid hard drive
- Lock setup for use to prevent tampering by user



configuring the user setup tab to show only the required noise parameters



viewing real time data



viewing downloaded run data