

CEL-90336 USB to RS232 Adaptor Instructions For Use

The USB to RS232 adaptor can be used for computers that do not have a traditional 9 way RS232 communications port. The CEL-90336 adaptor supplied by Casella USA comes complete with a small cdrom that contains the necessary drivers that must be installed for Windows XP to create a “virtual port” on the computer. This must be created before any connections are made to this adaptor to set it up properly for the instrument and software to use correctly. Disconnect any other cables from the adaptor and follow the instructions given below for correct operation with your system.

USB Driver Installation Under Windows XP

Plug in the USB type A receptacle of the cable to the USB connector of your computer. The “Found new hardware” wizard should start automatically on the computer. Place the enclosed CD into the CD ROM drive to load the necessary driver software. Click “next” at the Found New Hardware Wizard screen.

See Figure 1



Figure 1

Select the default location and click “**next**” to continue.

See Figure 2

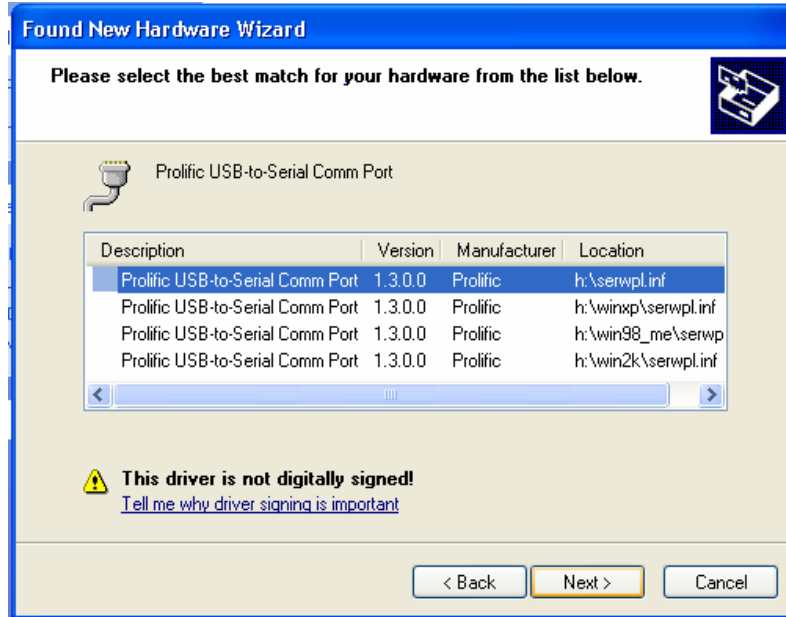


Figure 2

Click “**Continue anyway**” to proceed with the installation.

See Figure 3



Figure 3

The Wizard will continue installing the software, click “**Finish**” to close the Wizard.

See Figure 4.

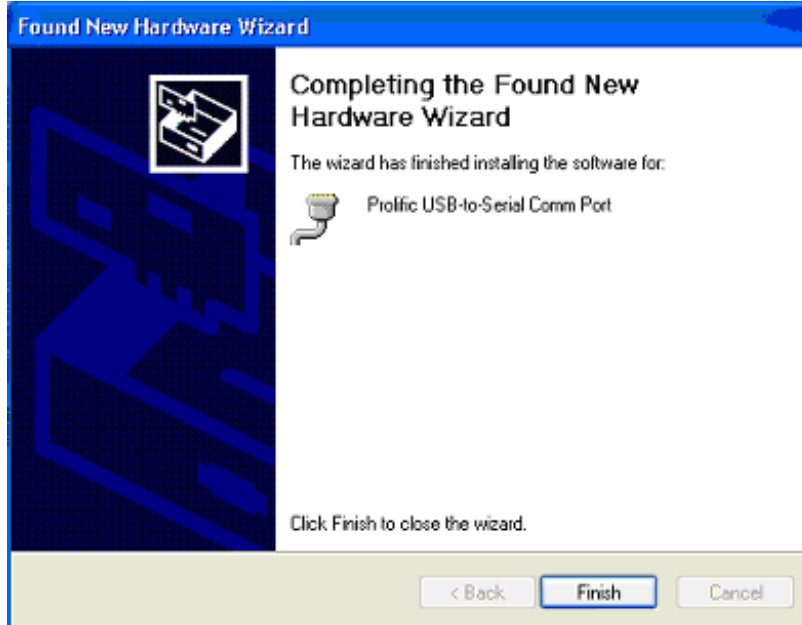


Figure 4

Double click "My Computer" → "System Properties" → "Device Manager" → Ports (Com & LPT) to make sure the device you have just installed is correctly displayed. See Figure 5

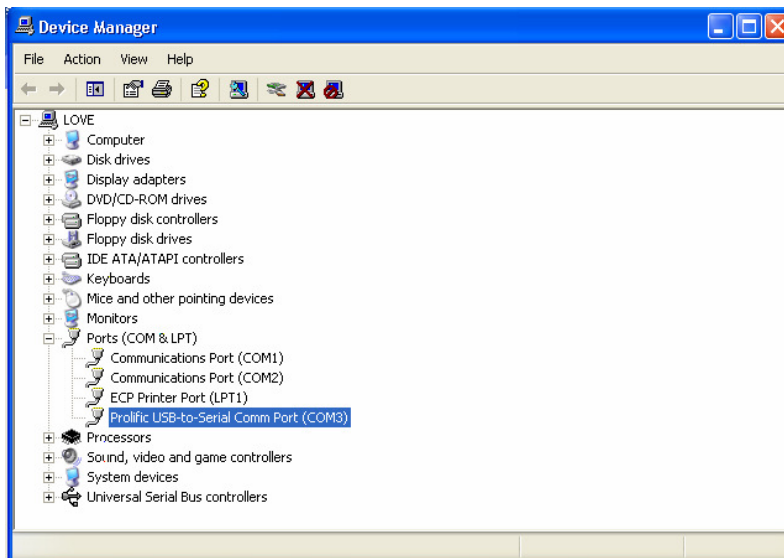


Figure 5

Make a note of the new "virtual port" that Windows has installed the USB adapter to and enter this into the Comm. Port selection in your CEL or Casella software program before attempting to communicate with your instrument. In this case it has been installed as Com3.