

Casella USA
17 Old Nashua Rd #15
Amherst, NH 03031
TF (800) 366-2966
FX (603) 672-8053

CMC39 (also 182091A.IR)

Infra Red Interface Unit

Operator Manual

The CMC39 IR Interface unit is a “Plug and Play” device in Windows XP Operating System so it is not necessary to install any drivers for it. Just connect to the computer and follow the onscreen prompts.

When connecting the interface to a computer with Windows 98 installed you must install the software for the relevant drivers first and then physically connect the interface unit to the 9 way RS232 connector on the back of the computer.

The CMC39 interface may also be used with a CEL-90336 RS232 to USB adaptor on computers that are not fitted with conventional 9 way D type sockets. In this case be sure to install the USB adaptor first using the software CD provided with that unit and to configure it as a valid RS232 port before connecting the CMC39 interface.

Contents

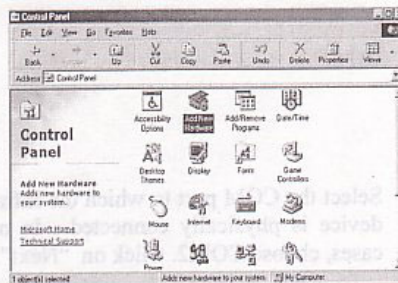
Installing the software drivers for Windows 98	page 2
Users manual introduction	page 4
Setting up	page 5
Trouble shooting	page 6
Specifications	page 7
Warranty	page 8

Windows 98 IR setup for IR220L/220L+/210L/200L

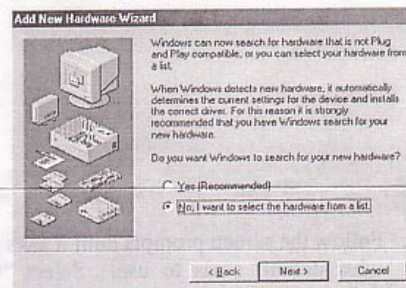
Caution: To install IR driver for this SIR adapter in Windows98, please be sure no FIR adapter was installed previously. If the FIR adapter and driver were already installed, even you remove this FIR driver in 'Device Manager' and then install IR driver for this SIR adapter, it may not work properly.

Connect ACT-IR2xxL serial adapter to the Com port of desktop PC. If there is no IR window on the portable PC, another IR2xxL should be connected to the portable PC.

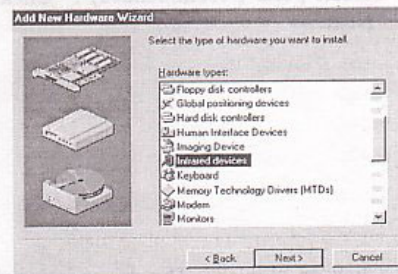
1. Go to "Control Panel" and double click on "Add New Hardware".
2. On the following screens, click on "Next" twice, then select "No, the device isn't in the list". And click on "next".



3. Select "No I want to select Hardware from the list",

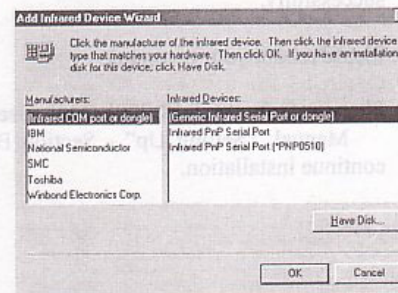


4. Scroll down the menu and highlight "Infrared Devices", then click on "Next" twice.



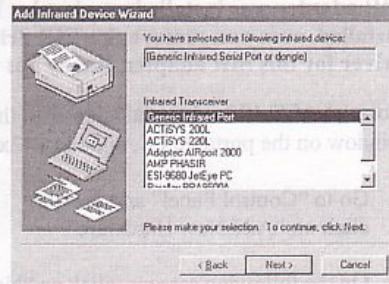
5. Under "Manufacturers" Select "(Infrared COM port or dongle)", and then in "Infrared Devices" Select "(Generic Infrared Serial Port or dongle)".

Click on "OK".



Casella USA
17 Old Nashua Rd #15
Amherst, NH 03031
TF (800) 366-2966
FX (603) 672-8053

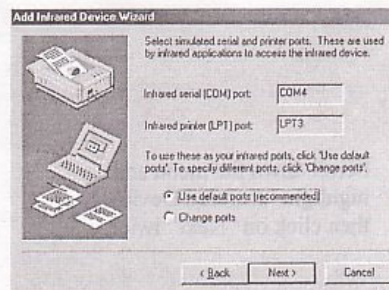
- At "Infrared Transceiver", Select "ACTiSYS IR-220L or ACTiSYS IR-200L". For ACT-IR-210L, Select "Generic Infrared Port" instead. Then click on "Next".



- Select the COM port to which the Infrared device is physically connected. In most cases, choose COM2. Click on "Next".



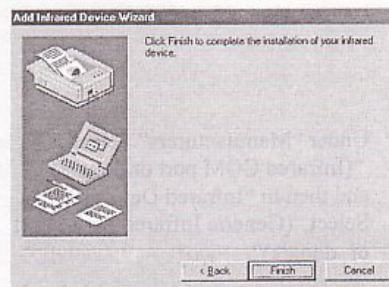
- Follow the screen prompts until it asks you what default ports to use. Select "Use default ports (recommended)". Click on "Next".



- Click on "Finish", The driver is installed successfully.

10. Please reboot your computer.

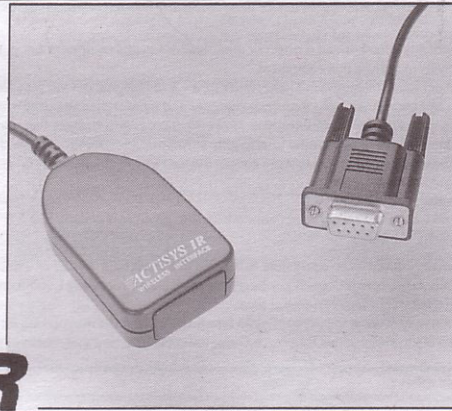
- Please refer to ACT-IR 200L/220L User's Manual, "Setting Up" - Section B to continue installation.



(Ver.1.0, 8-31-98)

Casella USA
17 Old Nashua Rd #15
Amherst, NH 03031
TF (800) 366-2966
FX (603) 672-8053

A C T i S Y S



ACTIR

ACT-IR 200L/220L

User's Manual and Windows 95 IR Application Guide

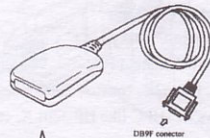
INTRODUCTION

Congratulations on purchasing the ACT-IR infrared wireless interface products from ACTISYS. The ACT-IR products enable you to build a wireless data highway between your convenient mobile devices and your host computers. The compact IR head can be attached easily to any convenient location using Velcro.

- **IR200L** attaches to the PC serial port connector and is compatible with multiple IR standards; ASK (500KHz) used by Sharp's Wizard and Zaurus, Apple's Newton, and IrDA-1.0 (SIR) used by many IrDA capable notebook PCs, PDAs, etc. No external power needed!
- **IR220L** attaches to the PC serial port connector and is IrDA-1.0 (SIR) compatible that in most cases can reach an IR communication distance of 0 cm to 240 cm, by using serial-port power only. No external power needed!

PARTS IDENTIFICATION

ACT-IR200L/IR220L



This IR head can be attached to any convenient desktop location using two Velcro strips which can be attached to the back, along the edge of the two lone sides, between rubber pads.

Casella USA
17 Old Nashua Rd #15
Amherst, NH 03031
TF (800) 366-2966
FX (603) 672-8053

SETTING UP

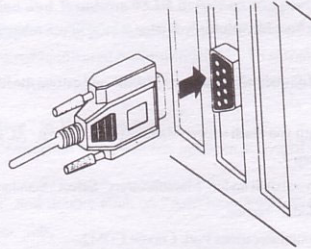
A. ACT-IR200L/IR220L

1. Locate a COM (serial) port on the back of your PC. Most COM ports use 9-pin male connectors.

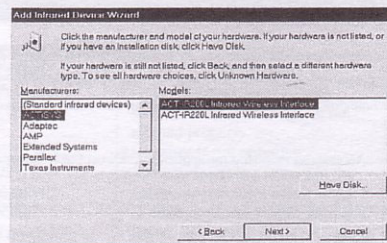
Note:

If all of your PC's COM ports are already used by a mouse and / or a modem, you must disconnect the modem or the mouse (both physical device and the corresponding software COM port connection) to vacate one COM port, or install an add-in board with additional COM ports.

2. Insert the 9-pin ACT-IR200L/IR220L connector in the 9-pin COM port, as shown in the following diagram.



If your PC has a 25-pin connector, you must use a 9-pin-to-25-pin converter, as shown in the following diagram.



Enable Infrared communication and Windows 95 IR driver on the portable PC:

Aim the ACT-I R2xxL serial adapter to the portable PC infrared window. Double click the Infrared icon in the Control Panel, and select "Option" and check "Enable infrared communication". To automatically enable the infrared port when the computer is started, create a shortcut to Windows\System\irmon.exe in the Startup folder.

Setup "Direct Cable Connection" in Windows 95:

If Windows 95 "Direct Cable Connection" program has not been activated in both PCs, please follow the instructions as listed below:

1. Go to "Control Panel" and double click on "Add/Remove Programs"
2. Click "Windows Setup" tab.
3. Highlight "Communications" and then click on "Details"
4. Check the "Dial-up Networking" and "Direct Cable Connection" boxes, then click "OK"
5. Click on "OK" under "Windows Setup" and follow the instructions on your screen.

Casella USA
 17 Old Nashua Rd #15
 Amherst, NH 03031
 TF (800) 366-2966
 FX (603) 672-8053

TROUBLE SHOOTING

Before making a service call, please check the following:

SYMPTOM	PROBLEM	REMEDY
Can not establish link (General)	<ul style="list-style-type: none"> • ACT-IR device and IR ready device on the other side are not aligned properly • Distance is not optimum. 	<ul style="list-style-type: none"> • Check to be sure units are properly aligned & leveled. • Check to keep optimum distance.
ACT-IR200L/220L is connected to and takes power only from the serial port of the notebook computer, not working or communication distance is too short.	<ul style="list-style-type: none"> • The power-saving feature in the notebook computer either stops or reduces power output from the signal lines of the serial port to the ACT-IR200L/220L devices, • Certain notebook computer requires you to set the Comm port to "Serial" or "Infrared", especially when it has a built-in IR window. 	<ul style="list-style-type: none"> • Set the "Power management" control to "Advanced" or "off" to enable power supplied from computer serial port to ACT-IR220L/200L devices. • Go to the appropriate control panel specified in the user's manual of your notebook computer and set the Comm port to "Infrared".
File Transfer between IR-equipped PDA and ACT-IR device-attached host computer stops before finishing up and an error message appears.	<ul style="list-style-type: none"> • The infrared communication is interfered. For example, something blocks out the infrared beam or the burst of strong light source, etc. 	<ul style="list-style-type: none"> • Check to find out the source of interference and eliminate it before trying again. • If you were restoring data, simply try again.. • If you were doing backup, sometimes the PDA does not reset its flags and keeps stopping at the same position unless you press the RESET button once. Be very careful, DO NOT initialize (press ON key and RESET button at the same time) your PDA. Otherwise you may lose all your data.

SYMPTOM	Problem	REMEDY
	<ul style="list-style-type: none"> • Software does not drive the IrDA controller chip on the motherboard. • Serial port is occupied and not available for IR transmission. 	<ul style="list-style-type: none"> • Make proper model # selection in the software as specified in your PC system user's manual. • Make sure to disconnect modem, etc. from the serial port to make it available for IR transmission.

Casella USA
17 Old Nashua Rd #15
Amherst, NH 03031
TF (800) 366-2966
FX (603) 672-8053

THE FOLLOWING WARRANTY GIVES YOU SPECIFIC LEGAL RIGHTS. YOU MAY ALSO HAVE OTHER RIGHTS WHICH VARY FROM STATE TO STATE.

LIMITED WARRANTY

ACTISYS Corporation warrants to the first consumer purchaser, for a period of 1 year from the date of purchase, that this wireless interface ("the Product") will be free from defective workmanship and materials, and agrees that it will, at its option, either repair the defect or replace the defective Product or part thereof at no charge to the purchaser for parts or for labor.

This warranty does not apply to any appearance items of the Product, any consumable items such as paper, ink ribbon, or batteries supplied with the Product, or to any equipment or any hardware, software, firmware, or peripheral other than the Product. This warranty does not apply to any Product the exterior of which has been damaged or defected, which has been subjected to misuse, abnormal service or handling, or which has been altered or modified in design, construction or interfacing. **Tampering With Label Voids Warranty**

In order to enforce the rights under this limited warranty, the purchaser should mail, ship, or carry the Product, together with proof of purchase, to ACTISYS.

The limited warranty described above is in addition to whatever implied warranties may be granted to purchasers by law. To the extent permitted by applicable law, ALL IMPLIED WARRANTIES INCLUDING THE WARRANTIES OF MERCHANT ABILITY AND FITNESS FOR USE ARE LIMITED TO A PERIOD OF 1 YEAR FROM THE DATE OF PURCHASE. Some states do not allow limitations on how long an implied warranty lasts, so the above limitation may not apply to you.

Neither the sales personnel of the seller nor any other person is authorized to make any warranties other than those described above, or to extend the duration of any warranties beyond the time period described above on behalf of ACTISYS Corporation.

The warranties described above shall be the sole and exclusive remedy available to the purchaser. Correction of defects, in the manner and for the period of time described above, shall constitute full satisfaction of all claims, whether based on contract, negligence, strict liability or otherwise. In no event shall ACTISYS Corporation be liable, or in any way responsible, for any damages or defects in the Product which were caused by repairs or attempted repairs performed by anyone other than ACTISYS technician. Nor shall ACTISYS Corporation be liable or in any way responsible for any incidental or consequential economic or property damage. Some states do not allow the exclusion of incidental or consequential damages, so the above exclusion may not apply to you.