

CEL-63X Plugin for Casella Insight Database Software

Introduction

The CEL-63X Plugin for the Casella Insight software allows measurement results stored in a CEL-63X series logging analyzer to be transferred and saved in the master database for archival purposes.

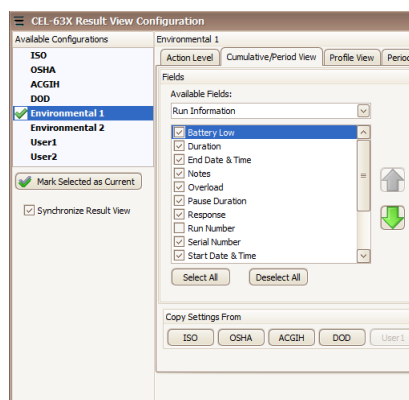
Results can be viewed, plotted and output to reports in a wide variety of popular file formats.

Noise measurements can be integrated into a complete report that also includes noise dosimetry measurements and allocated to specific users or areas on site or for a process.

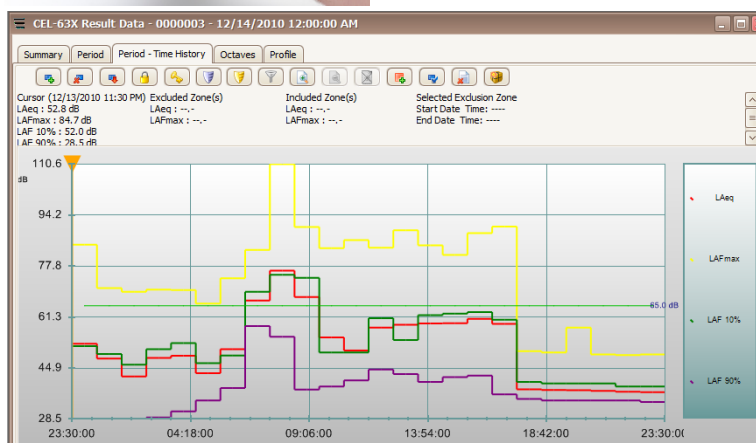


Key benefits

- Download results to a single software package
- View all measurements taken by the instrument no matter what was shown on the display
- Calibration information can be saved with reminders for the next recertification due
- View results in tabular format or as a graph with relevant octave band frequency information
- Use the report generator to make a comprehensive hard copy of run data



Summary list of results



Period time history results from CEL-633 logging analyzer

Applications

Casella Insight can be used to view the run results as a table or as a graphical representation when frequency or time history data have been recorded. The Plugin allows the user to customize the view such that only the key results are displayed from the complete list of many possible

combinations of parameters that will have been saved in the instrument. The **Period** interval time history and the additional **Profile** time history can be examined and inspected using cursor and exclusion zones to remove unwanted data. Markers applied in the meter can be seen

on screen for the correct identification of significant times in the recording. Multiple runs can be combined to make a week's run from 7 daily continuous recordings. Reports are available for export as pdf, rtf, xls file formats to email to customers or clients.

Ordering information

Insight F
ISU005

Plugin license for CEL-63X meter for single user on one computer
Add CEL-63X Plugin license to existing licensed copy of Insight