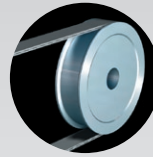


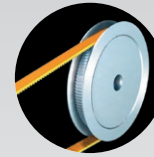
# E170



V-BELT



FLAT BELT

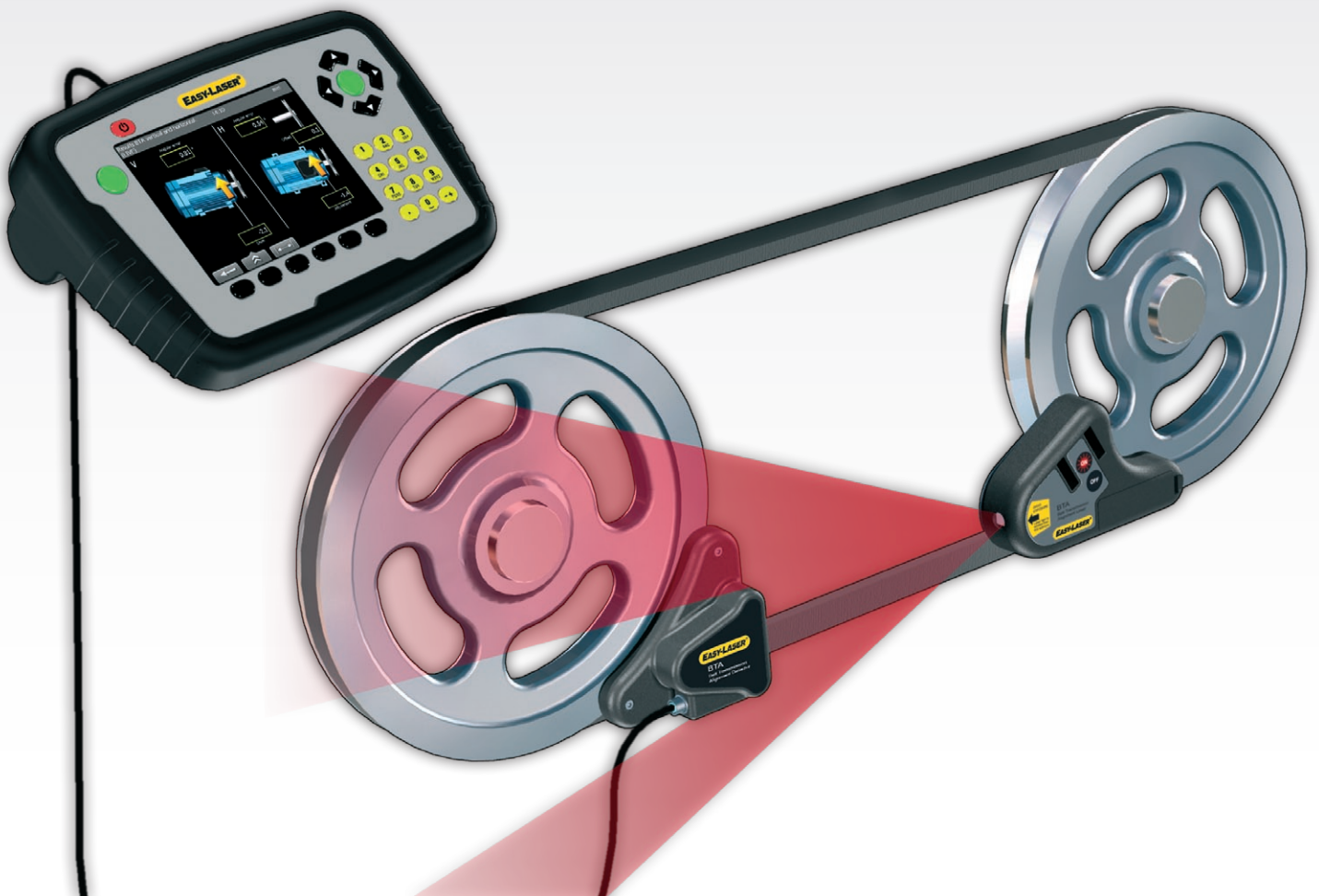


TIMING BELT



CHAIN DRIVES

*Fits almost any kind of sheave!*



## BELT ALIGNMENT

*Alignment of belts, sheaves and pulleys with digital precision*

**EASY-LASER®**

- Read off alignment results continuously where the adjustment is made
- The adjustment values are always displayed live
- Much faster and more accurate than measuring with earlier, conventional methods
- Alignment can be made by one operator
- Also suitable for non-magnetic sheaves
- Save and document the results

*Note! This is not a complete system but an accessory for the E710 system.  
Display unit and cable are not included.*

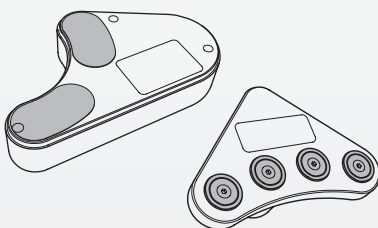
## EXTEND THE LIFE OF BELTS AND SHEAVES

### EASY TO USE

Easy-Laser® BTA is attached in a few seconds (magnets) with the laser transmitter on one of the sheaves and the detector on the other. The program guides the user on how to mount the units. The transmitter generates a laser plane parallel to the reference sheave. The detector reads the position in relation to the laser plane and provides a live digital display of both offset and angular value. Graphics clearly indicates adjustment directions. This makes the alignment of the adjustable machine very simple. The accuracy of the digital readout also means that you can align within prescribed tolerances and rely on the result. Using a separate display unit makes it all even easier, as you can read off and follow the adjustment at the precise point on the machine where the adjustment is made.

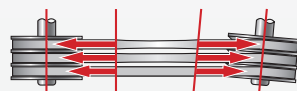
### ALIGNMENT SAVES MONEY

When aligning with the Easy-Laser® BTA you reduce the wear on sheaves/pulleys, belts, bearings and seals as well as reducing vibration. Increased efficiency also means large energy cost savings. Especially transmissions with two or more belts, or wide belts, are highly affected by misalignment, causing large differences in belt tensions and also increased wear and tear on edges.

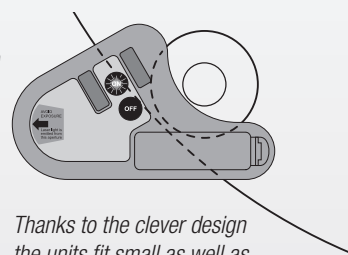


Magnetic reference surface on both transmitter and detector for easy attachment to the sheaves.

On non-magnetic sheaves the units can be mounted with double sided tape, thanks to the low weight.



Difference in belt forces.



Thanks to the clever design the units fit small as well as large sheaves.



### TECHNICAL DATA

#### Easy-Laser® E170 BTA, Part No. 12-0659

1	Laser transmitter
1	Detector
2	Targets
1	Carrying case, WxHxD: 10.6"x8.8"x3.1" [270x225x80 mm]
Note! This is not a complete system but an accessory for the E710 system. Display unit and cable are not included.	

#### Laser transmitter

Sheave diameters	∅ 2.5" [60 mm] and larger
Laser class	2
Output power	<1 mW
Laser wavelength	635-670 nm
Beam angle	60°
Accuracy	Laser plane - Reference plane: Parallelity: < 0.05°, Offset < 0.008" [0.2 mm]
Battery type	1xR6 (AA) 1.5 V
Battery operation	8 hours continuously
Material	ABS plastics / Hard anodized aluminium
Dimensions	WxHxD: 5.7x3.4x1.2" [145x86x30 mm]
Weight	9.5 oz [270 g]

#### Detector unit

Measurement distance	Up to 9.8' [3 m] between Transmitter and Detector
Measurement range	Axial offset: ± 0.12" [3 mm]. Angular value: ±8°
Connection	Standard Easy-Laser® "red cable" (not included)
Material	ABS plastics / Anodized aluminium
Dimensions	WxHxD: 3.7x3.7x1.4" [95x95x36 mm]
Weight (without batteries)	6.0 oz [170 g]

The E170 BTA works with the BTA program in the display unit of system E710. Please note that the E170 BTA cannot be connected to any D-series equipment.

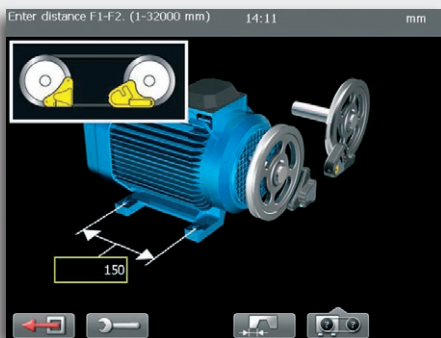


Fig. 1. The program guides you on how to mount the units on the sheaves.

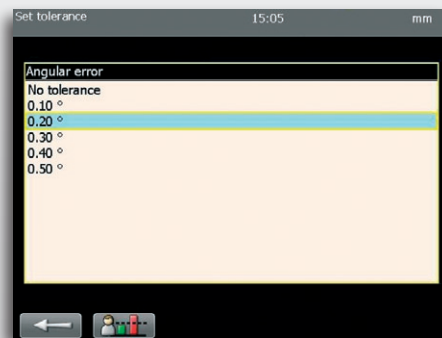


Fig. 2. You can set a tolerance of 0.10°-0.50°, or a value you specify yourself.

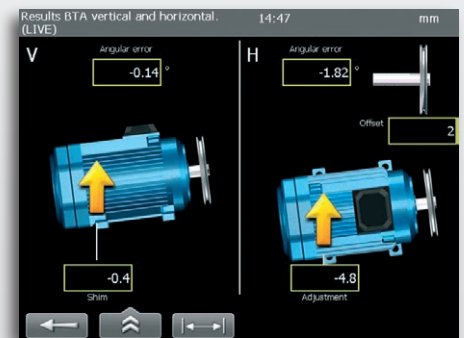


Fig. 3. Shim and adjustment values are displayed live for easy alignment. Green values=within tolerance, red=outside.

Easy-Laser® is manufactured by Damalini AB, Alfagatan 6, 431 49 Mölndal, Sweden, Phone +46 31 708 63 00, Fax +46 31 708 63 50, email: info@damalini.se, www.damalini.com © 2011 Damalini AB. We reserve the right to make modifications without prior notification. Easy-Laser® is a registered trademark of Damalini AB. This product complies with: SS-EN60825-1-1994, 21 CFR 1040.10 and 1040.11 Extend the warranty from 2 to 3 years by registering your system on the Internet.

