



USB RH/TEMPERATURE DATA LOGGER with LCD DISPLAY

USER'S MANUAL



HT20

Please read this manual carefully and thoroughly before using this product.

TABLE OF CONTENTS

Introduction	3 – 4
Key Features	4 – 5
Safety Instruction	5
What's in the Blister Pack	5
Product Overview	6 – 7
Setup Instructions	7 – 12
Installing/Replacing the Battery	7 – 8
Install Software and Drivers	8 – 9
Configure the Unit	10 – 13
Operating Instructions	13 – 17
Deploy the Unit	13 – 14
Stop Logging and Import Logs	14 – 15
Viewing, Printing and Exporting Data Logs	15 – 16
Other Indications	16 – 17
Specifications	18
Maintenance Tips	19
Warranty Information	19
Return for Repair Policy	20

INTRODUCTION

Thank you for purchasing General Tools & Instruments' HT20 USB RH/Temperature Data Logger with LCD Display. Please read this user's manual carefully and thoroughly before using the instrument.

The HT20 is a low-cost, compact, battery-powered thermohygrometer capable of unattended logging (recording) of the ambient temperature and relative humidity (RH) of an environment for days, weeks or months. Data logging can be started or stopped by pushing a button on the unit, eliminating the need to bring a laptop to the job site.

After a data log has been captured and stored, it can be uploaded as a .txt file to any PC running the Windows®7 or Windows® XP operating system after plugging the HT20 into one of the computer's USB ports. The HT20's internal flash memory is large enough to store up to 8000 pairs of humidity and temperature readings.

Included with the product—which is slightly larger than a thumb drive—is a mini-disc with the drivers needed to interface the unit to the computer, as well as software that can display a data log file as a table or graph and/or export it to Microsoft Excel. Exporting to Excel is recommended for sophisticated trending and analysis of humidity and temperature data and easy detection of unexpected excursions.

Windows® 7 and Windows® XP are registered trademarks of Microsoft Corporation.

Applications for the HT20 include:

- **Water damage restoration**—Because the HT20 is designed to be deployed and left in place over the duration of the job, it is always in equilibrium with the environment.
- **Process control**—The HT20 enables, simplifies and cuts the cost of environmental monitoring of office buildings, greenhouses, food and equipment storage facilities, wineries, freezers, shipping containers, HVAC/R installations, computer rooms, labs, libraries, museums and saunas.
- **Electronics manufacturing**—Alerts provided by the low-humidity alarm function of the HT20 can mitigate the risk of damaging high-voltage static discharges.

KEY FEATURES

- One button starts/stops data logging without a PC
- Plug-and-play USB 2.0 interface; no need for cables, cradles or docks
- Large storage capacity: Up to 8000 pairs of humidity and temperature readings
- 3-1/2-digit LCD displays real-time temperature and humidity readings; also indicates device working status and “memory full”
- Included software is used to set: Sampling time from 10 seconds to 12 hours; Hi/Lo alarm setpoints for humidity and temperature; Temperature unit (°F or °C)
- Software also calculates dew point and displays data logs as time-based graphs synchronized to your PC’s clock

- One-click exporting of logs to Excel or Word
- Long battery life (up to one year)
- Includes USB extension cable
- One-year warranty

SAFETY INSTRUCTION

Do not use the HT20 in the presence of flammable or explosive gases.

WHAT'S IN THE BLISTER PACK

The HT20 comes in a blister pack that also contains

- One “1/2 AA” battery
- A disc with software drivers for Windows7 or Windows XP computers, a program for capturing data logs and displaying them as curves, and a PDF of this user’s manual
- A USB extension cable
- A hard copy of this user’s manual (inside the fold-over card)

PRODUCT OVERVIEW

Fig. 1a below shows the main components, controls and connectors of the HT20. Fig. 1b (on the facing page) shows all possible indications on the HT20's display. Familiarize yourself with their names and functions before moving on to the Setup Instructions.

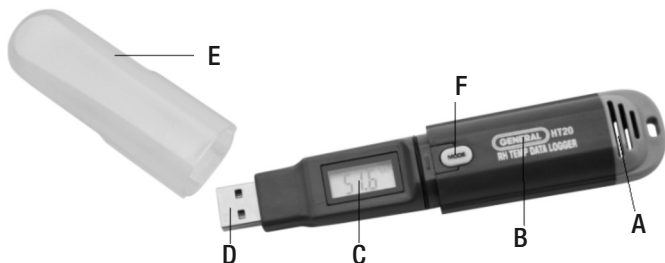


Fig. 1a. The components, controls and connector of the HT20

- A. Temperature and humidity sensor window
- B. Battery compartment (latch is on rear of unit)
- C. 3-1/2-digit LCD (displays temperature and humidity readings; also indicates device working status and “memory full”)
- D. USB plug
- E. Protective cap
- F. **MODE** button



Fig. 1b.
All possible
display
indications
on the HT20

Display Legend

▲: indicates reading is higher than high alarm setpoint for that parameter

▼: indicates reading is lower than low alarm setpoint for that parameter

%RH: relative humidity unit

°C: Celsius temperature unit

°F: Fahrenheit temperature unit

[-]188.8: Humidity or temperature value or one of the following four working status indications

LOG: Unit is logging data

- - -: Unit is in standby mode, ready to log data

FUL: Internal memory is full (and logging has been stopped)

CON: Unit needs to be configured by software

SETUP INSTRUCTIONS

INSTALLING/REPLACING THE BATTERY



LATCH ↓

The HT20 uses a 3.6VDC “1/2 AA” Lithium-ion battery.


To open the battery compartment, use a paper clip or a screwdriver with a fine point to push in the silver flange showing through the small square hole in the rear of the unit

(left photo on previous page). Push back the cover (middle photo), remove the old battery (right photo) and insert a fresh battery in the correct orientation. Then replace the cover, pushing it forward until you feel and hear a click.

After you replace the battery, the LCD will “wake up” and begin displaying real-time readings. If the **MODE** button is not pressed within 60 seconds, the LCD will be automatically powered off.

Note: If the battery is removed from a unit before it has been set up from software or while it is recording, the unit must be reconfigured before it can be reactivated. If it is not reconfigured, the unit will remain in standby mode.


INSTALL SOFTWARE AND DRIVERS

1. Place mini-disc in tray of CD/DVD drive, shiny side down. Close tray.
2. When the AutoPlay window appears, click on “Open folder to view files using Windows Explorer.”
3. Windows Explorer will indicate that there are two “Files Currently on the Disc”. One is actually a folder containing a PDF of the HT20 user’s manual (as well as PDFs of the manuals for the HT10 and HT50—versions of the HT20 without an LCD and with an IR thermometer). Copy the HT20 manual to your computer’s hard drive for permanent storage. The other file is a Windows Installer Package (.msi file) named “ELUSB V1.0”. Double-click its  icon.
4. A window titled “Welcome to the ELUsb Setup Wizard” will appear. Click **Next** to continue.
5. Within the window that appears next, click the box next to “I accept the terms in the License Agreement”. Then click **Next** to continue.

6. The next window advises that the ELUSB application will be installed in your computer's C:\Program Files folder in a new subfolder named <ELUSB>. If you want to install the software elsewhere, click **Browse** and choose another location. After selecting either the default location or another location, click **Next** to continue.
7. When the "Ready to install ELUsb" window appears, click **Install** to continue.
8. Before the installation begins, a User Account Control window may appear and ask, "Do you want to allow [ELUSB V1.0.msi] to make changes to this computer?" Click **Yes** to continue.
9. The ELUsb Setup Wizard will now install the program on your computer. On the next window that appears, click **Finish**.
10. At the bottom of the Device Driver Installation Wizard that appears next, click **Next** to continue.
11. The next window to appear is a Windows Security window. Click on "Install this driver software anyway" to continue.
12. The next Device Driver Installation Wizard window will advise you that an HT10/20/50 driver from General Tools or Kecheng Laboratories was successfully installed and that your device is now "Ready to use." Click **Finish** to continue.



CONFIGURE THE UNIT

Note that the software installation has added a  icon to your desktop. To facilitate access to the program, right-click on the icon and pin it to both your Start button and the Quick Start area at the left of your taskbar. You can now eject the installation mini-disc and store it with your other important software.

Plug the HT20 into an available USB port of your computer. **If your computer is a laptop and the only available USB jack does not have enough vertical clearance to accommodate the HT20 without mechanically stressing its USB plug, do not plug the HT20 directly into the jack. You do not want the plug of the HT20 to support any of the weight of the laptop.** If that is the case, plug the HT20 into the jack of the included USB extension cable and insert the plug of the extension cable into the computer's USB jack.

The first time you plug the HT20 into your computer, your system tray will notify you that the computer is "Installing Device Driver Software". When the notification disappears, open the ELUSB program by selecting it via your Start button, clicking on its icon on your taskbar, or double-clicking its desktop icon.

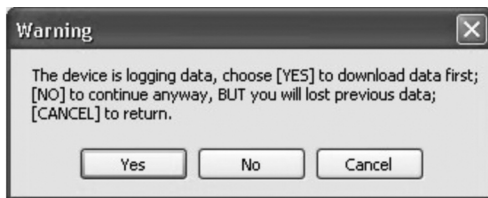
If the software has installed correctly and you have plugged the HT20 into a working USB port of your computer, the following screen should appear on your computer's display.





Fig. 2. The three options made available by plugging the HT20 into a USB port

Note: If you have already used your HT20 to log data and it is still in recording mode, plugging the unit in will cause the following window to appear.



Click **Yes** to stop recording and import all data recorded to that point in time. Click **No** to continue to Setup without importing recorded data (meaning it will be lost). Click **Cancel** to go back and unplug the unit from the USB port.

You can now use the software to “configure” your HT20. Configuring the device means choosing four key parameters:

- **Sampling time**—How often it makes and stores humidity and temperature measurements.
- **Temperature unit**—degrees Fahrenheit or Celsius (°F or °C).
- **High and low temperature alarm** setpoints
- **High and low humidity alarm** setpoints

To begin, click on “Set up the USB Data Logger” in the window shown in the figure above. Doing so will cause the following window to appear.

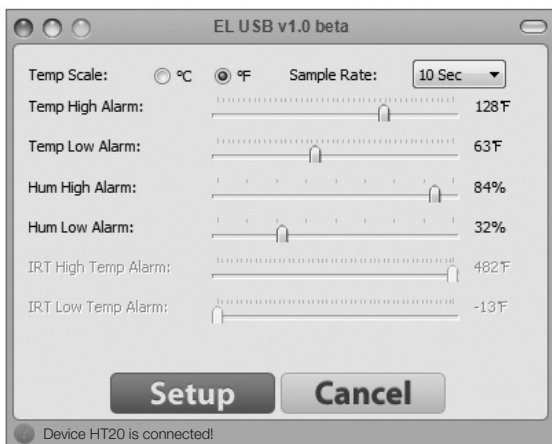


Fig. 3. The HT20 configuration (Setup) window

Using your mouse, trackball or touchpad, first choose your Temp Scale and Sample Rate (sampling time). With regard to sampling time, using the shortest setting of 10 seconds may result in too much essentially identical data being stored in

memory, potentially limiting its capacity to capture important events such as an unexpected excursion of temperature or humidity. Conversely, using the longest sampling time setting of 12 hours will likely cause important events to go undetected.

If you are an experienced data logger, you already know how to choose the optimum sampling time for your application. If you are a novice, pick a sampling time closer to the minimum sampling time than the maximum, on the assumption that the HT20 probably has enough memory (8000 pairs of humidity and temperature readings) to store all the data you ask the meter to log—unless you use it to log data for months, rather than weeks or days.

If you wish, you can also drag the sliders shown in the figure to set high and low alarm setpoints for temperature and humidity.

Once you have chosen your data logging parameters, click **Setup**. A window will appear advising that “The device is set up successfully.” Clicking **Setup** also synchronizes the HT20’s internal clock with your computer’s clock, giving all data logs to be captured an absolute time reference.

You can now unplug the HT20 from your computer’s USB port. The unit is in “standby” mode, ready to begin logging data.

OPERATING INSTRUCTIONS

DEPLOY THE UNIT

The HT20 is particularly easy to deploy on a job site because the unit does not need to be plugged into a computer to be activated (ready to start logging data). Working together, the **MODE** button and the LCD serve as the control and indicators needed to: 1) start and stop data logging and 2) verify and change the unit’s working status.

That leaves only two things to be sure of when choosing a place to deploy the HT20:

- The temperature and humidity sensor window (Fig. 1a, Callout A) is not covered
- The humidity and temperature values at the unit's location are “representative” of the room

The HT20—with its protective cap on—can be deployed either by laying it on a horizontal surface or by hanging it vertically within the included plastic mounting bracket. The back of the bracket features both a magnet and a hanger hole.

Once you have deployed the HT20, you can initiate data logging. **To start data logging**, press and hold the **MODE** button for at least 3 seconds. **The LCD will display the word “LOG” to confirm that logging has begun.**

STOP LOGGING AND IMPORT LOGS

To stop data logging, press and hold the **MODE** button for at least 3 seconds. **The LCD will display three dashes (- - -) to confirm that logging has stopped.**

That is how you should stop data logging if you plan to initiate another logging session later without uploading logged data to your computer in the interim. If you allow logging to continue and you do not upload your data to your computer soon, you risk filling up the HT20's memory.

A simpler and safer way to stop data logging is to plug the HT20 into your computer's USB port immediately after completing a logging session and then use the ELUSB software to stop logging.

Each time you plug the HT20 into the USB port, the window shown in Fig. 2 will appear. When you plug in the unit, it makes no difference whether it is still logging; the procedure

for uploading (importing) data logs is identical. Just click on the middle selection—**Stop the USB Data Logger and download data**—to instantly execute both functions. The data will be imported as a .txt file. A “Save As” window will appear, asking you to identify where you want the file to be stored and what you want to name it.

VIEWING, PRINTING AND EXPORTING DATA LOGS

Immediately after you close the “Save As” window by clicking on **Save**, the uploaded data log will automatically be displayed as a set of curves representing all loggable values. Fig. 4 is a typical example. The initial display includes all parameters, including dew point (which the software automatically calculates) and alarm setpoints that you may have entered during Setup. To remove any parameter or horizontal and vertical grid lines from the overall plot, uncheck its box at right.

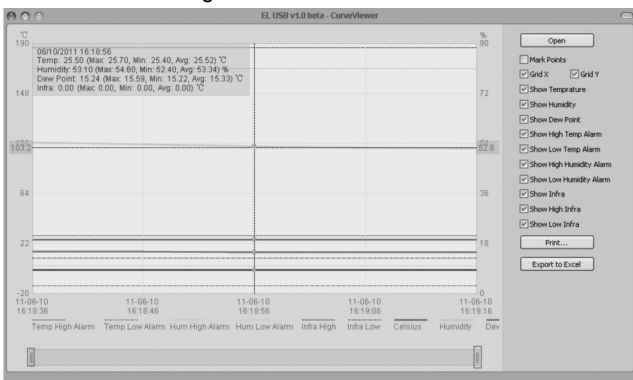


Fig. 4. A typical initial plot of an imported data log

There are several features shown in Fig. 4 worth noting:

- To mark the position of every recorded data point on the curve, check the “Mark Points” box at the top of the sidebar at right.
- To get a higher-resolution view of the data recorded during a specific period of time, scale up and down the curves by dragging the slider at the bottom of the window left and right.
- Hovering the cursor over a particular point of the curve displays all data related to this point—including the maximum, minimum and average values of the entire curve—in a shaded box at upper left.
- The dates and times shown on the x-axis scale and in the upper left corner are in sync with your computer’s clock.
- **To print** the .txt file of any data log, click the **Print** virtual button.
- **To open** a previously saved data log, click the **Open** button. This function is also available as the “View previously saved data” option shown in Fig. 2.
- **To export** a file to Excel for advanced trending and analysis, click the **Export to Excel** button.

OTHER INDICATIONS

As mentioned earlier, the **MODE** button and the LCD can be used together to display real-time temperature and humidity measurements, and to indicate the current working status of the HT20.

Circuitry inside the HT20 automatically shuts down the LCD (to conserve battery life) if the **MODE** button has not been

pressed within the past 60 seconds. That is the case even when the unit is logging data. In other words, the LCD is normally “asleep”.

To wake up the LCD, briefly press the **MODE** button. This first press of the button will cause the LCD to resume displaying the same indication that was on-screen when the LCD was last put to sleep.

There are four possible display indications: (1) current temperature in Celsius, (2) current temperature in Fahrenheit, (3) current relative humidity (in %), and (4) current working status. Each press of the **MODE** button changes the display to the next indication in the sequence; pressing the **MODE** button when the LCD is displaying the unit’s current working status (4) resets the cycle to (1).

There are four possible working status indications:

- **LOG**: The unit is currently logging data
- **- - -**: The unit is in standby mode, ready to log data
- **FUL**: The unit’s internal memory is full and logging has been stopped
- **CON**: The unit needs to be configured by software

When the LCD is displaying a temperature or humidity reading, it also gives an indication if the reading is outside the “acceptable” range of readings for that parameter—assuming that high and/or low alarm setpoints were entered during the Setup procedure. If an “up” arrow appears at the left of the reading (see Fig. 1b on p. 7), the measured value of that parameter is higher than its high alarm setpoint. If a “down” arrow appears at the left of the reading, it is lower than the low alarm setpoint for that parameter.

SPECIFICATIONS

Temperature Measurement Range	-4° to 158°F (-20° to 70°C)
Temperature Measurement Accuracy	±0.7°F (0.4°C)
Temperature Measurement Resolution and Repeatability	±0.2°F (0.1°C)
Relative Humidity (RH) Measurement Range	10 to 90%
RH Measurement Accuracy	±3%
RH Measurement Resolution and Repeatability	±0.1%
Internal Storage Capacity	8,000 pairs of RH/Temp readings
Display	3-1/2-digit LCD with 60 second auto power off
Temperature Response Time	0.5 seconds
Humidity Response Time	5 seconds
Interface	USB 1.0/2.0
Length of USB Extension Cable	7.9 in. (200mm)
Dimensions	4.96 x 1.10 x 2.01 in. (126 x 28 x 51 mm)
Weight	<7 oz. (<200g)
Power Source	3.6V non-rechargeable (1/2 AA) 1200mAh Lithium-ion battery
Current Consumption	<0.2mA
Battery Life (typical)	1 year

RETURN FOR REPAIR POLICY

Every effort has been made to provide you with a reliable product of superior quality. However, in the event your instrument requires repair, please contact our Customer Service to obtain an RGA (Return Goods Authorization) number before forwarding the unit via prepaid freight to the attention of our Service Center at this address:

General Tools & Instruments
80 White Street New York, NY 10013 212-431-6100

Remember to include a copy of your proof of purchase, your return address, and your phone number and/or e-mail address.



Specialty Tools & Instruments

GENERAL TOOLS & INSTRUMENTS

80 White Street
New York, NY 10013-3567
PHONE (212) 431-6100
FAX (212) 431-6499
TOLL FREE (800) 697-8665
e-mail: sales@generaltools.com
www.generaltools.com
HT20 User's Manual

Specifications subject to change without notice

©2011 GENERAL TOOLS & INSTRUMENTS

NOTICE - WE ARE NOT RESPONSIBLE FOR TYPOGRAPHICAL ERRORS.

MAN#HT20 3/16/12