



# MODEL.6710 CAPTURE HOOD DATA ACQUISITION SOFTWARE

## INSTRUCTION MANUAL



01001
1 2 .07

## **Note:**

1. Specifications and the related details in this manual will be subject to change along with the software version upgrade.
2. Working principle :one software corresponding to one PC.

# TABLE OF CONTENTS

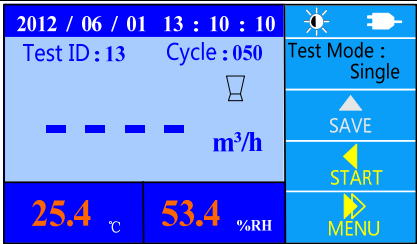

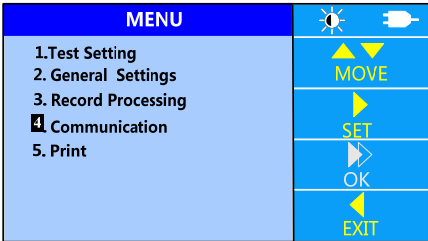


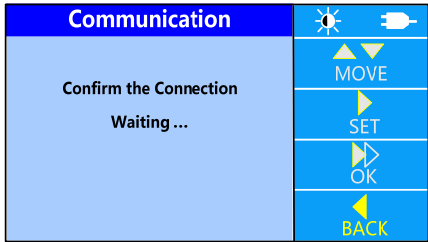
<b>1. SUMMARY</b> .....	4
<b>2. Software installation:</b> .....	6
<b>3. How to use the software</b> .....	9
<b>3.1 Start</b> .....	9
<b>3.2 Data download</b> .....	9
<b>3.3 Data Hiding</b> .....	10
<b>3.4 Unit switch</b> .....	11
<b>3.5 Temperature unit switch:</b> .....	11
<b>3.6 Data Save</b> .....	11

# 1. SUMMARY

This manual explains how to upload the data with the computer software. The data stored in the flash memory will be read and transferred, including: Air flow rate (m³/h) , Temperature (°C) , Humidity (%RH) and so on. Then these records will be saved in Microsoft office Excel (\*.CSV) compatible file format.

## Instrument settings:

### 1) Communication settings

Display Shows	Operating key	Explanation
	POWER	Press "POWER" to enter the main interface.
↓	<b>【MENU】</b> 	Press and hold for 2 seconds to enter "MENU".
	<b>【MOVE】</b> 	Press the "MOVE" buttons to select option 4."Communication".
↓	<b>【SET】</b> 	Under "MENU", press "SET" to enter the "Communication"
	The display will then indicate: "Confirm the Connection Waiting..."	

**2) Connection illustration for reference:**

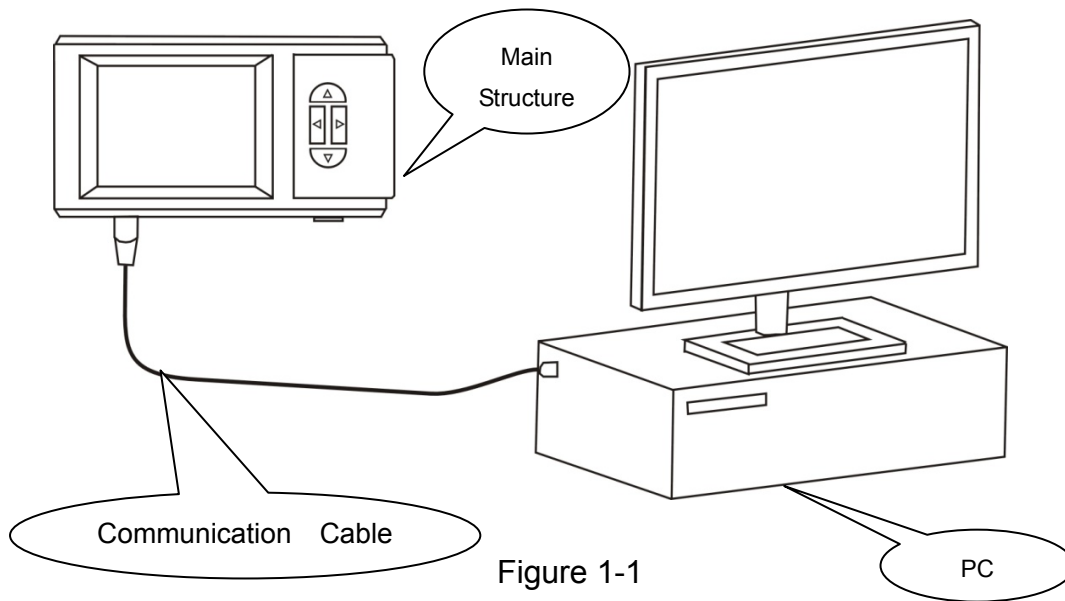


Figure 1-1

**3) Software support:**



Item	content
Operating system	Microsoft Windows XP, Microsoft Windows 7
Language	English or Simplified Chinese
Communication	USB connection with PC

**4) PC configuration request:**

- .CPU            IBM PC compatible machine with CPU Pentium II or above
- .Interface        1 USB port
- .Operating system    Microsoft Windows XP, Microsoft Windows 7
- .RAM             ≥256MB
- .HDD             ≥100MB free disc space
- .Corresponding model: 6710

## 2. Software installation:

- 1) It's recommended that you turn off other application programs before the installation. Insert the CD-ROM into the disk driver.

Then open the folder  **6710\_setup** , and double click  to begin the installation. The screen shown in Figure 2-1 will appear. Press "Next".

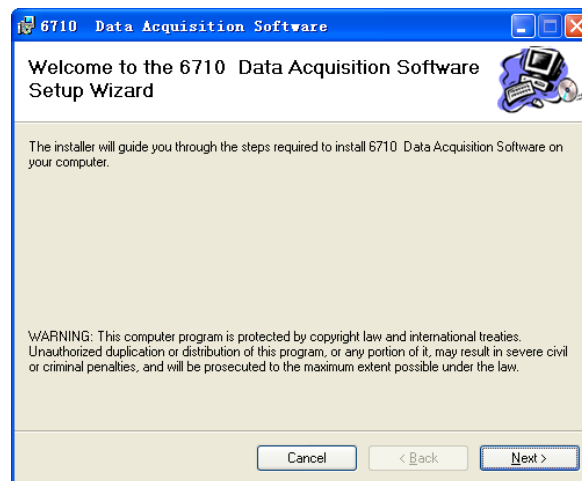


Figure 2-1

- 2) Then the screen shown in Figure 2-2 appears. Press "Next" after you select a folder to install this software.

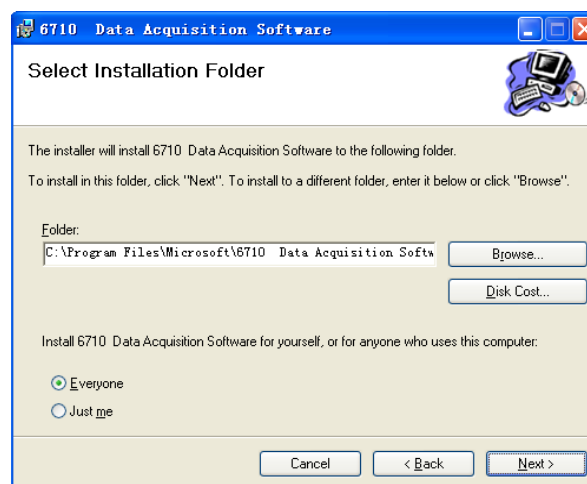


Figure 2-2

3) Then the screen shown in Figure 2-3 appears. Press “Next” to start the installation.

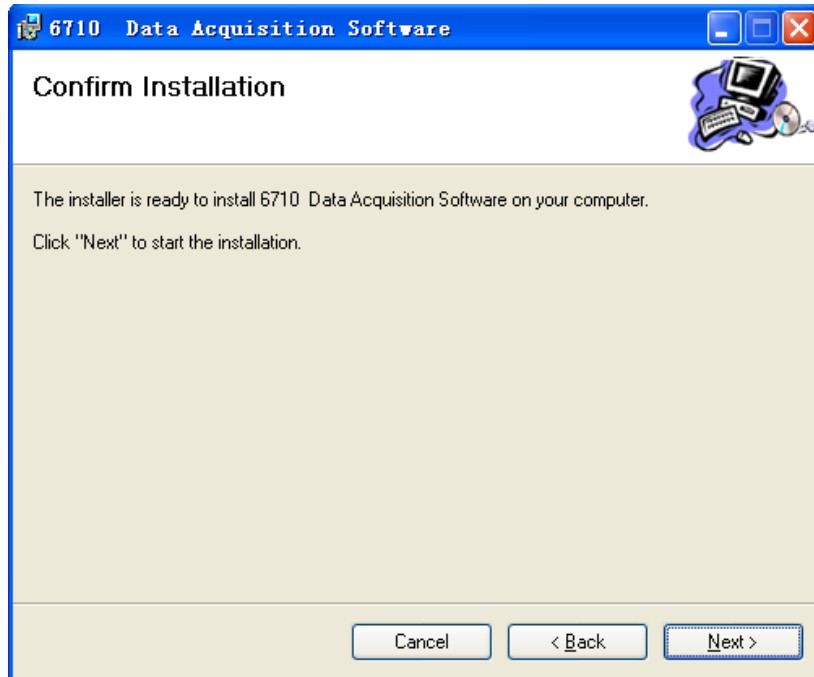


Figure 2-3

4) Wait until the installation finishes, as shown in Figure 2-4.

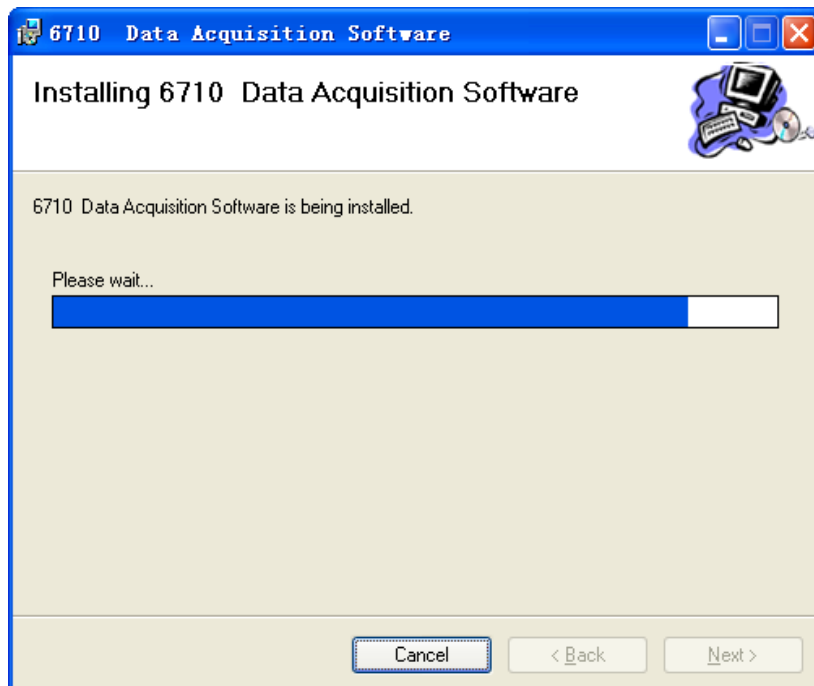


Figure 2-4

5) When the screen shown in Figure 2-5 appears, press “Close”.

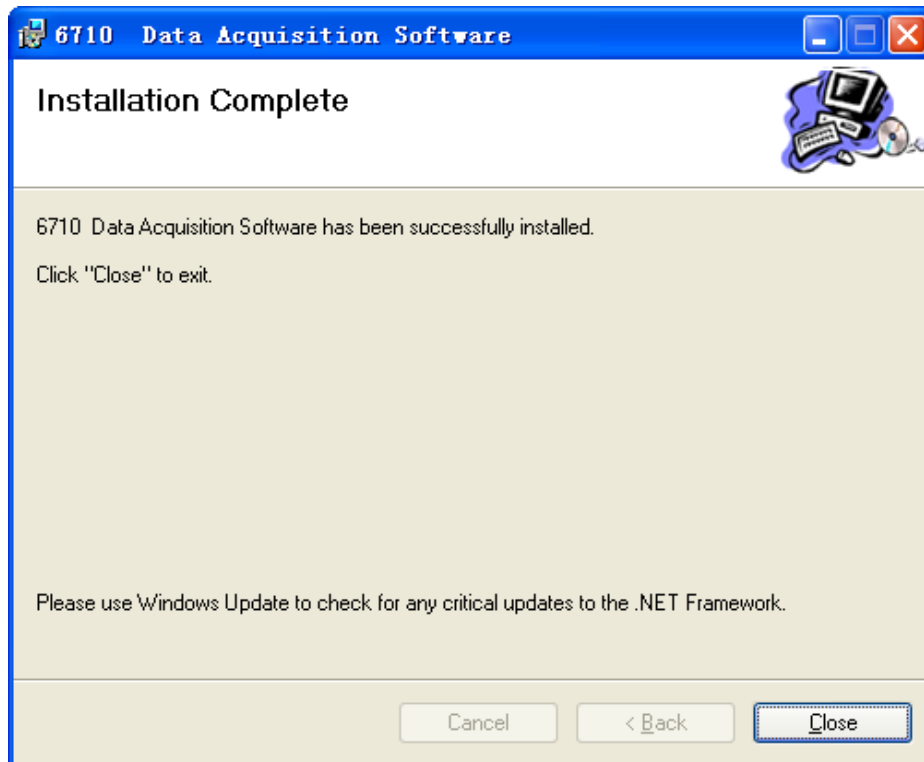


Figure 2-5

6) After clicking “Close”, the icon shown in Figure 2-6 will be displayed on the screen indicating installation was successful.

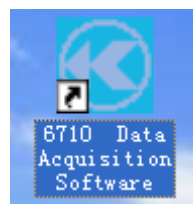



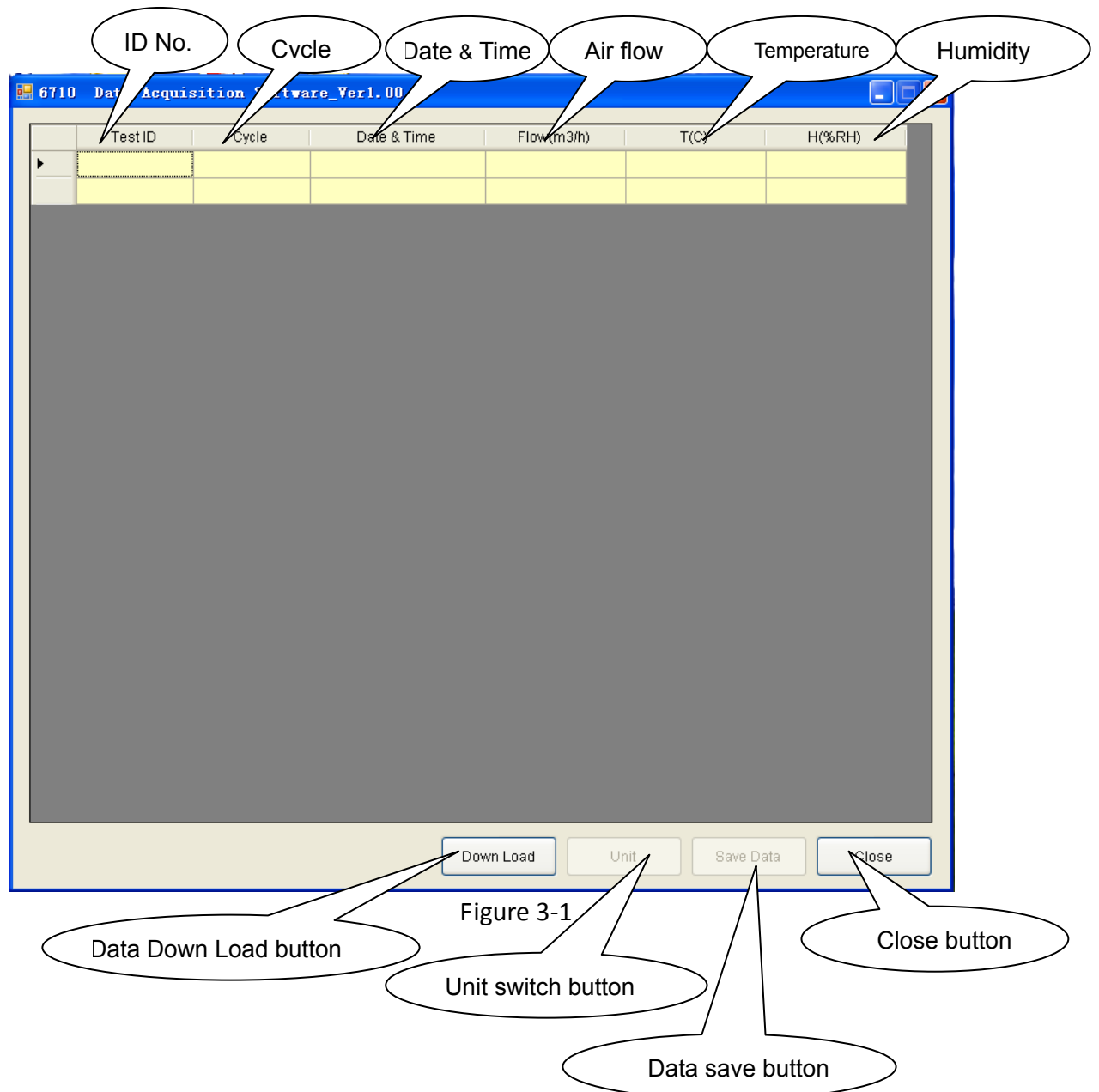
Figure 2-6



### 3. How to use the software

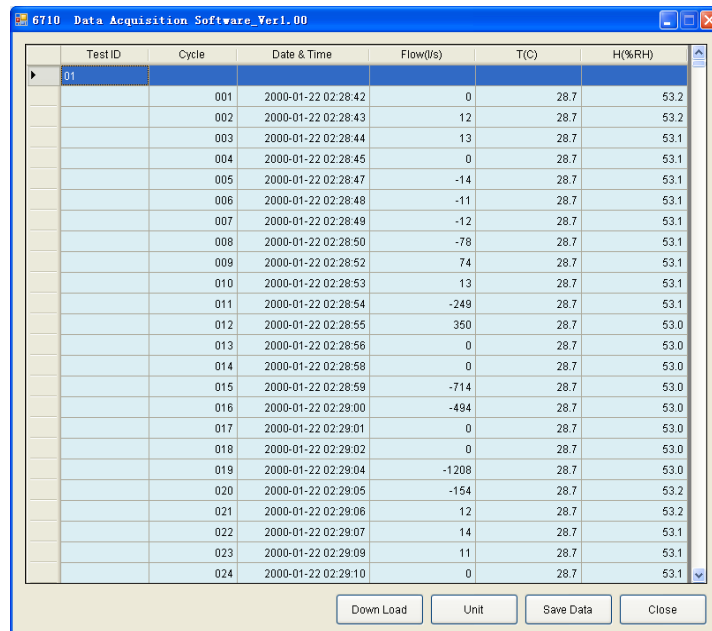
#### 3.1 Start

Double click the icon  to start the data reading software. A sample of the opening software screen is shown for reference:



### 3.2 Data download

Connect a USB cable, click **【Down Load】** and the display will change as shown below:

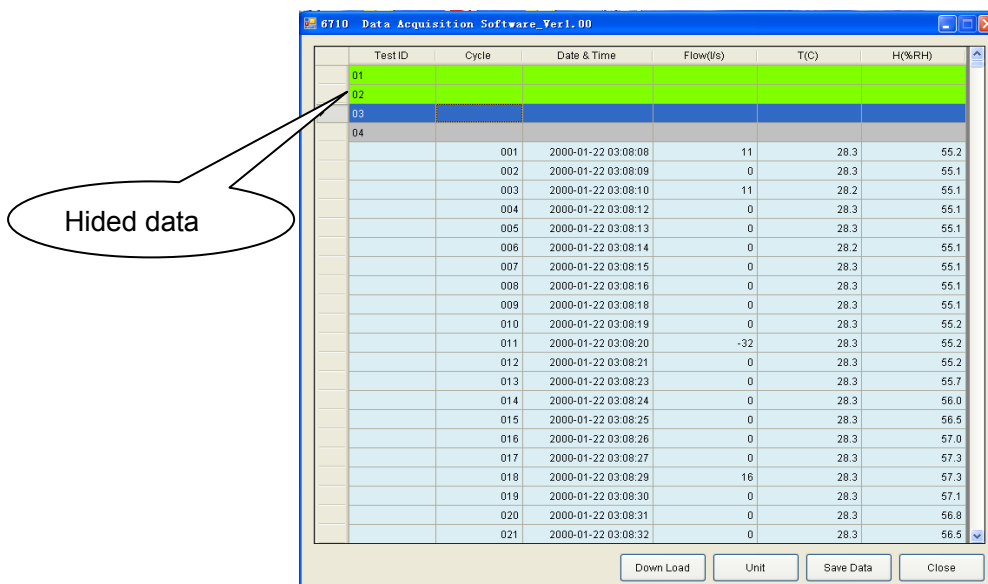


TestID	Cycle	Date & Time	Flow(Us)	T(C)	H(%RH)
01					
	001	2000-01-22 02:28:42	0	28.7	53.2
	002	2000-01-22 02:28:43	12	28.7	53.2
	003	2000-01-22 02:28:44	13	28.7	53.1
	004	2000-01-22 02:28:45	0	28.7	53.1
	005	2000-01-22 02:28:47	-14	28.7	53.1
	006	2000-01-22 02:28:48	-11	28.7	53.1
	007	2000-01-22 02:28:49	-12	28.7	53.1
	008	2000-01-22 02:28:50	-78	28.7	53.1
	009	2000-01-22 02:28:52	74	28.7	53.1
	010	2000-01-22 02:28:53	13	28.7	53.1
	011	2000-01-22 02:28:54	-249	28.7	53.1
	012	2000-01-22 02:28:55	360	28.7	53.0
	013	2000-01-22 02:28:56	0	28.7	53.0
	014	2000-01-22 02:28:58	0	28.7	53.0
	015	2000-01-22 02:28:59	-714	28.7	53.0
	016	2000-01-22 02:29:00	-494	28.7	53.0
	017	2000-01-22 02:29:01	0	28.7	53.0
	018	2000-01-22 02:29:02	0	28.7	53.0
	019	2000-01-22 02:29:04	-1208	28.7	53.0
	020	2000-01-22 02:29:05	-154	28.7	53.2
	021	2000-01-22 02:29:06	12	28.7	53.2
	022	2000-01-22 02:29:07	14	28.7	53.1
	023	2000-01-22 02:29:09	11	28.7	53.1
	024	2000-01-22 02:29:10	0	28.7	53.1

Figure 3-2

### 3.3 Data Hiding

Double click the gray area for hiding the small ID data , so you can easy see the bigger ID data.



TestID	Cycle	Date & Time	Flow(Us)	T(C)	H(%RH)
01					
02					
03					
04					
	001	2000-01-22 03:08:08	11	28.3	55.2
	002	2000-01-22 03:08:09	0	28.3	55.1
	003	2000-01-22 03:08:10	11	28.2	55.1
	004	2000-01-22 03:08:12	0	28.3	55.1
	005	2000-01-22 03:08:13	0	28.3	55.1
	006	2000-01-22 03:08:14	0	28.2	55.1
	007	2000-01-22 03:08:15	0	28.3	55.1
	008	2000-01-22 03:08:16	0	28.3	55.1
	009	2000-01-22 03:08:18	0	28.3	55.1
	010	2000-01-22 03:08:19	0	28.3	55.2
	011	2000-01-22 03:08:20	-32	28.3	55.2
	012	2000-01-22 03:08:21	0	28.3	55.2
	013	2000-01-22 03:08:23	0	28.3	55.7
	014	2000-01-22 03:08:24	0	28.3	56.0
	015	2000-01-22 03:08:25	0	28.3	56.5
	016	2000-01-22 03:08:26	0	28.3	57.0
	017	2000-01-22 03:08:27	0	28.3	57.3
	018	2000-01-22 03:08:29	16	28.3	57.3
	019	2000-01-22 03:08:30	0	28.3	57.1
	020	2000-01-22 03:08:31	0	28.3	56.8
	021	2000-01-22 03:08:32	0	28.3	56.5

Figure 3-3

### 3.4 Flow Unit switch

Click **【Unit】** to change the displayed unit and the following box will appear:

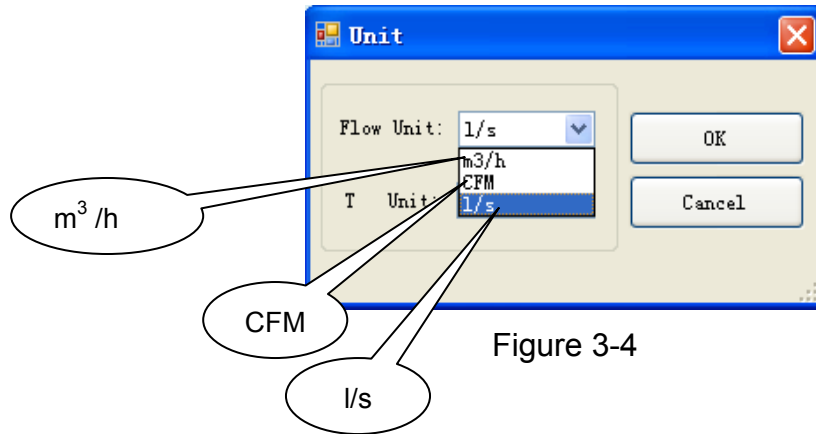


Figure 3-4

### 3.5 Temperature unit switch:

Select the temperature unit as shown below:

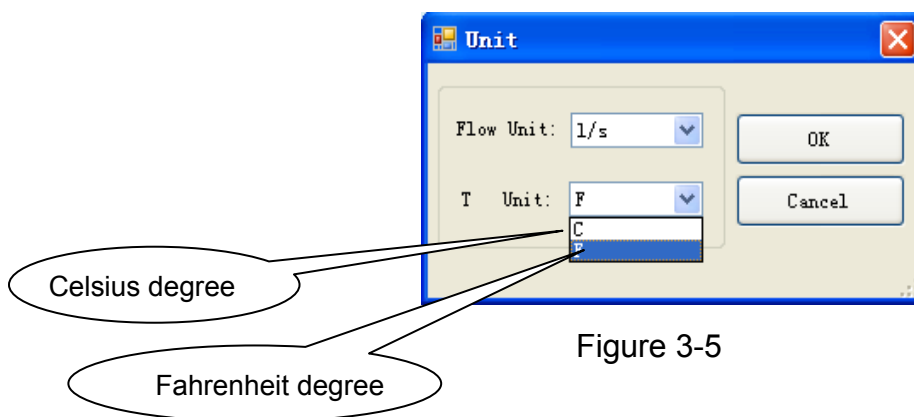


Figure 3-5

### 3.6 Data Save

Click **【Save Data】** to save the data and you will be prompted to choose a location to save the data to as figure 3-6 shown below. Select a file name and location then click save to finish saving the data.

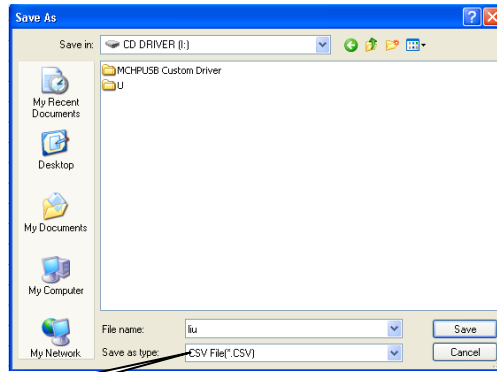


Figure 3-6

EXCEL file layout