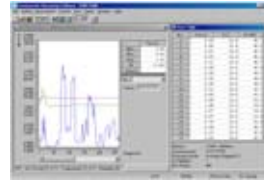


Climomaster™ Model A531 Series

Multi-function hot-wire Anemometer with detachable compatible probes

Features:

- Simultaneously measures and displays air velocity, flow rate, humidity, temperature, and differential pressure
- Airflow rate calculation based on registered duct size
- Data HOLD function, Record and recall MAX / MIN / AVG
- Store up to 1500 measurements
- 5 interchangeable probes are available for various applications
- Smart probe technology: easy probe replacement without recalibration of the main unit
- Includes probe, 79 in (200cm) probe connection cable, 6 pcs. AA batteries, carrying case, and NIST Certificate



Optional data processing software allows real-time measuring and downloading data to your PC





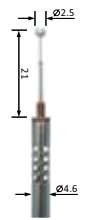


As well as HVAC testing, Climomaster and its probes are suitable for IAQ investigation, laboratory control, cleanroom control, and industrial applications, such as automotive.

Main Unit Specifications

Model	A531 / A541 / A542 / A533 / A543
Air Velocity Ranges	Varies by Model, See below for Probe Specifications
Accuracy	+/- (2% of reading + 0.1 m/s)
Temperature Ranges	32 to 212°F (0 to 100°C)
Accuracy	+/- 1.0°F (0.5°C)
Relative Humidity Ranges	Varies by Model, See below for Probe Specifications
Accuracy	+/- 2%RH
Differential Pressure Ranges	+/- 5.00 kPa *Option
Accuracy	+/- 3% of reading
Interface	RS232C
Datalogging	1500 measurements
Analog Output	0 to 1 V *Option
Power Supply	6 x AA Batteries or AC Adapter
Dimensions	W3.4" x H7.4" x D1.6"
Weight	0.9 lbs (400 g)

Probe Specifications

					
Model	A531-01	A541-01	A542-01	A533-01	A543-01
Probe Type	Uni-Directional	Uni-Directional	Omni-Directional	Omni-Directional	Omni-Directional
Air Velocity	20 to 6000 fpm (0.10 to 30.0 m/s)	20 to 6000 fpm (0.10 to 30.0 m/s)	20 to 6000 fpm (0.10 to 30.0 m/s)	10 to 1000 fpm (0.05 to 5.00 m/s)	10 to 1000 fpm (0.05 to 5.00 m/s)
Temperature	32 to 140°F (0 to 60°C)	32 to 140°F (0 to 60°C)	32 to 140°F (0 to 60°C)	32 to 140°F (0 to 60°C)	32 to 140°F (0 to 60°C)
Relative Humidity	2.0 to 98.0 %RH	n/a	n/a	2.0 to 98.0 %RH	n/a

Accessories

- 6531-04: Telescopic Extension Rod (Flex-Neck)
- 6531-05: Telescopic Extension Rod (Straight)
- 6531-06: Probe Cable (available 2, 5, 10, 20 m)
- 6531-07: Pressure Sensor
- 6531-08: Analog Output
- S600-00: Data Processing Software (for Windows)
- 6000-02: Communication Cable to PC (RS232C)
- 6000-03: Printer Cable for DPU-S245
- 6000-04: Carrying Case
- 6000-05: AC Adapter
- DPU-S245: Portable Thermal Printer
- TP-202L: Rolled Printer Paper (10 rolls)



6531-04



6531-05



DPU-S245



6000-04