



TIM[®] – Total Instrument Manager

[Computer Calibration System]

FiveStar[®] Alarm
Orion[®] Multigas Detector
Passport[®] Personal Alarm
Gasport[®] Gas Tester
Watchman[®] Multigas Monitor



Features

In line with the quality, performance and support that you've come to expect from MSA, the TIM System provides the following data:

- Full calibration
- Bump test
- Instrument tracking
- Printed test receipt
- Printed reports
 - Calibration history
 - Calibration due date
 - Instrument inventory
- One-button operation



Immediate Calibration Results

The TIM system can bump test or fully calibrate an instrument and immediately display and print the results.

The TCC display:

- shows if an instrument passes or fails the bump test or calibration
- displays the results for each sensor.

To allow the user to compare instrument status before and after TIM System calibration, the display shows:

- the “AF” (As Found) sensor reading
- the “AL” (As Left) sensor reading.

In addition, these results display on the computer monitor and are maintained in the TIM System database permanent record.



Password Availability

If desired, the TIM System allows password identification.

The system can:

- maintain identification of individual users and instrument serial numbers
- record the user date, time and calibration type (bump test or full calibration) performed



Calibrate Four Instruments Simultaneously

The TIM System software can calibrate up to four instruments at the same time— with only one computer and four TIM Control Centers (TCCs).

The monitor display identifies each TCC that is in operation.

With four TCCs running, the computer can simultaneously display the four calibration processes.

Whether one, two, three or four instruments are being calibrated, the TIM System ensures that each instrument is fully calibrated and ready to go!



Auto-Recognition Capability

The TIM System automatically recognizes the MSA instrument intended for calibration:

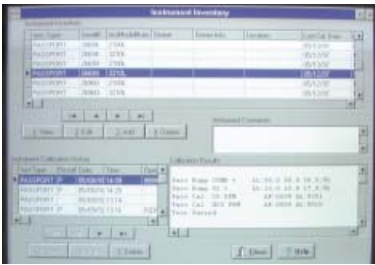
- Passport Personal Alarm
- Gasport Gas Tester
- Watchman Multigas Monitor
- FiveStar Alarm
- Orion Multigas Detector

This unique feature:

- automatically identifies the instrument serial number and model type
- eliminates the need for changing setups
- alerts the user when an instrument is not in proper working condition and specifies the cause.

Beyond instrument calibration, the TIM System:

- automatically generates test protocol based on instrument sensor configuration
- adjusts run time for instrument and pump type to ensure shortest test time
- checks instrument software and sensor compatibility
- notifies user if gas for instrument test is not assigned to a TCC
- synchronizes date and time of instrument calibration with personal computer
- prints computer-generated test receipt.



Stores All Calibration Records

The TIM System electronically stores all bump test and calibration records.

With a click of the mouse, a drop-down screen displays all recorded calibrations of any particular instrument.

The calibration record of each instrument is stored by date, time and result.

Instrument Records:

- Instrument and pump type
- Model number (sensors installed)
- Owner information
- Instrument location
- User comments

Test Records:

- Test date and time
- Test pass/fail
- Operator running test (optional)
- Detailed sensor-by- sensor records



Computer Requirements

A computer is required to operate the system at the local site, but a single computer can run up to four TCCs.

To ensure that the TIM System can be easily enhanced for future use, it is designed to operate on a standard IBM-compatible personal computer. The software is compatible with all versions of Windows.

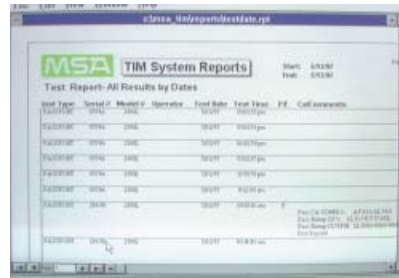
Minimum Requirements

Version 2.0 Standard System

- Processor: Pentium
- RAM: 16 Megabytes recommended
- Disk Space: 30 Megabyte Hard Drive
- COM Ports: 1 to 4 available

Minimum Instrument Software Requirements:

- Passport, Version 4.0
- Watchman, Version 4.0
- Gasport, Version 2.0
- FiveStar, Version 3.0
- Orion, Version 1.5



Report Capability

The TIM System's data software includes a user-friendly archive with view and print capability for all calibrations of all instruments bump-tested or calibrated on the TIM System.

The TIM System provides a quick reference for any particular instrument and its calibration results, or a complete detailed master report of all instruments, categorized and printed in hard-copy form.

With the click of a mouse, the TIM System can collate instrument calibration reports by:

- Test Results
- Instrument Reports
- User Reports

Test results can be identified by:

- Date
- Instrument
- Serial Number

Instrument reports can be categorized by:

- Instrument Type
- Serial Number
- Last Calibration Date

User reports can be collated and identified by the user's IDENTIFICATION NUMBER or LAST NAME.

The TIM System report capability allows the user to retrieve and print all calibration and instrument information in the desired format.

TIM System Kits

Choose from any one of 11 pre-configured TIM System kits designed to calibrate your specific instrument.

ORDERING INFORMATION

TIM System Components \ TIM System Kit Part No.	10010742	10010151	10010152	10010153	10010154	10010155	10010156	10010157	10010158	10010150	10030771
TIM Control Center (P/N 710338)	•	•	•	•	•	•	•	•	•	•	•
Software CD (P/N 710460)	•	•	•	•	•	•	•	•	•	•	•
Fresh Air Inlet Filter (P/N 633697)	•	•	•	•	•	•	•	•	•	•	•
Instruction Manual (P/N 710548)	•	•	•	•	•	•	•	•	•	•	•
6-foot Length of Tubing (P/N 603806)	•	•	•	•	•	•	•	•	•	•	•
Warranty Card (P/N 10006796)	•	•	•	•	•	•	•	•	•	•	•
PC Computer, Pentium (P/N 10006402)		•									
Data Docking Module (P/N 804679)			•	•							
Module Bracket, Watchman (P/N 10006711)			•	•							
Gas Miser Model RP Regulator (P/N 710288)	•	•	•		•		•		•		•
Gas Miser Model BD Regulator (P/N 710289)				•		•		•		•	
Holster Assembly, Integral Pump (P/N 710658)					•	•					
Holster Assembly, Add-On Pump Module (P/N 711391)							•	•			
Holster Assembly, FiveStar (P/N/ 10010164)									•	•	
Holster Assembly, Orion (P/N 10028009)											•

Chlorine and Ammonia

The TIM System is released for use with Chlorine and Ammonia calibration gas ONLY with the Fivestar® Alarm instrument.

Whether you perform a manual calibration or a computer calibration, Chlorine and Ammonia are gases that require proper use and delivery to calibrate an instrument properly. Unlike most gases used with the TIM System (connect and go) the nature of Chlorine and Ammonia gases requires additional programming of the TIM System software, special regulators suitable for use with Chlorine or Ammonia, and a modified gas delivery system.

The Fivestar Alarm has numerous combinations of gas sensors that can be installed in conjunction with Chlorine and Ammonia sensors, and some combinations may require a change in the TIM System software to ensure proper delivery of Chlorine or Ammonia calibration gas.

TIM Systems for use with Chlorine or Ammonia can only be ordered through our MSA Customer Service Center, to ensure that the software is programmed for use with your particular sensor configuration in the Fivestar Alarm.

Assemble-To-Order

If MSA's 11 pre-configured TIM System kits do not meet your exact requirements, you can custom order a complete system that will meet your needs. To configure your TIM System, select instrument options and mark them in the appropriate boxes below. Then, contact your MSA Safety Products Distributor to place your order. As with all MSA Assemble-To-Order requests, your order will be shipped the same day it is received.

A - TIM- _____ - _____ - _____
1 2 3 4

1-Basic TIM System

All TIM Systems come complete with this basic configuration ("A-TIM"). The only other component needed is a holster assembly or data docking module which can be ordered as an accessory. The Basic TIM System includes:

Part No.	Description
710338	TIM Control Center (TCC)
710460	Software Disks
633697	Fresh Air Inlet Filter
710548	Instruction Manual
710288	Gas Miser Regulator, Model RP
603806	6-foot Calibration Tubing

2-Data Docking Module

Select only option. Enter number of selection in position 2 above.

- 0 = None
- 1 = Add-on Pump Holster Assembly (P/N 711391)
- 2 = FiveStar Holster Assembly (P/N 10010164)
- 3 = Data Docking Module (P/N 804679)
- 4 = Integral Pump Holster Assembly (P/N 710658)
- 5 = Orion Holster Assembly (P/N 10028009)

3-Gas Regulator Type

This option allows your system to be ordered with multiple regulators. Enter letter of selection in position 3 above.

- 0 = None
- A = Gas Miser, Model BD (P/N 710289)
- B = Gas Miser, Model RP (P/N 710288)
- C = Natural Gas Regulator (P/N 710545)
- D = Gas Miser BD and Gas Miser RP
- E = Gas Miser RP and Natural Gas Regulator
- F = Gas Miser BD and Natural Gas Regulator
- G = All: Gas Miser BD, Gas Miser RP and Natural Gas Regulator

4-Personal Computer

This option allows users to order a personal computer with the TIM System. The computer will have the TIM System software installed and the icon initialized. Enter number of selection in position 4 above.

- 0 = None
- 1 = Pentium computer (software installed)

The supplied computer is configured with the following minimum requirements. However, because of rapid advancements in computer technology, MSA reserves the right to ship a computer of a larger size and faster processor speed.

Minimum requirements:

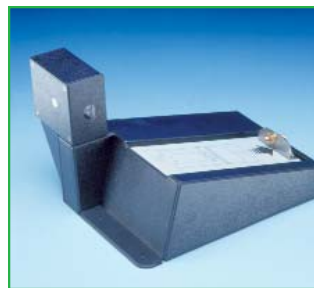
- IBM compatible 333 MMX processor
- 6.4 GB hard drive
- 32 MB RAM
- 32x CD-ROM drive
- Windows 98
- 56K internal fax modem
- 15" monitor
- PC Anywhere
- 3 1/2" 1.44MB floppy drive
- mouse
- keyboard
- optional 3-year on-site warranty

Included with the purchase of a computer is a fax modem and PC Anywhere software that allows the MSA Technical Support Line to provide on-line service and technical assistance (during normal working hours). With a few clicks of the mouse, MSA's Technical Support Department will have the capability, via modem, to actually view the operation of your TIM System and computer. Installation requires a dedicated telephone line. Your TIM System can be set up, installed, tested and ready to use within 30 minutes.

Accessories

The TIM System requires one of the holster assemblies or the data docking module described below to communicate with the instrument. Other accessories are optional.

Part No.	Description
710658	Holster assembly for use with Passport integral pump and Gasport-style instruments. Includes built-in data docking module and gas feed connection. Just load and press “run” on TCC to calibrate.
711391	Holster assembly for use with Passport add-on pump. Includes built-in data module and gas feed connection. Just load and press “run” on the TCC to calibrate.
10010164	Holster Assembly for use with FiveStar Alarm. Includes Jet Eye Infrared Communication Module and gas feed connection. Just load and press “run” on TCC to calibrate.
804679	Data docking module for use with Gasport, Passport and Watchman instruments. Includes MSA Link Data Logging software.
10010168	A/B Switchbox (6” x 6” x 2½”) Connect two holster assemblies or data docking modules for use with one TCC. Shipped complete with inter-connecting cable and dual feed calibration gas flow system. Switch allows usage with connected holster or module assembly. Only one instrument can be calibrated at a time.
10010167	TCC Printer (6” x 6” x 9”) Shipped complete with 5 rolls of printer paper and required cables. Connects directly to the TCC and automatically prints a 3” x 5” test receipt of instrument test. Ideal for confined space entry permits.
10028009	Holster Assembly for use with Orion instruments (pump only). Includes Jet Eye Communication Module and gas feed connection. Just load and press “run” on TCC to calibrate.



P/N 710658 Integral Pump



P/N 711391 Add-On Pump



P/N 10010164 Holster Assembly Shown with FiveStar Alarm



P/N 804679 Data Docking Module



P/N 10028009 Holster, shown with Orion Instrument



P/N 10010168 A/B Switchbox



P/N 10010167 TCC Printer

Portable and Equipped

Designed for use where space is limited, the portable TIM Control Center (TCC) measures only 11" x 9" x 6" and weighs less than 7 pounds.

The housing is .090 aluminum, painted with rugged wear-resistant epoxy paint.

The unit features a sloped face panel, four non-skid mounting feet, and an illuminated, easy-to-read display for operation in low-light areas.

A membrane-activated, alpha/numeric, panel-mounted keyboard provides easy touch-button data entry.

While the unit comes with an independent on/off switch, it is actually designed to stay on continuously. The unit's power requirement is 1.5 Amp, 115/220 VAC.

The TCC is self-contained with:

- A six-port calibration gas input manifold
- Barbed tubing connections
- An RS 232 connector for short-range data transmission
- An RS 422 connector for long-range data transmission.

System Setup

All necessary connectors and power connectors are supplied. In less than 15 minutes, your TIM System is completely operational:

1. Plug the power cord into the TCC.
2. Plug in a computer interface connector from the TCC to the personal computer.
3. Plug in a unit-under-test stand or module connector.
4. Attach the calibration tubing from the calibration cylinder to the TCC manifold.

The software is easy to install and designed for users with limited computer experience. All you need to know is where the keyboard "ENTER" key is located and how to click a mouse.

The software:

- Is supplied on one easy-to-install CD
- Loads onto your computer hard drive
- Automatically establishes an icon on the desktop display screen



Instrument Software Requirements

The TIM System will recognize Passport or Watchman units with version 4.0 or later software, the FiveStar Alarm with software version 3.0, and the Gasport Gas Tester with software version 2.0, Orion Instrument with software version 1.5. Please contact MSA regarding upgrades to existing instruments.



Note: This Bulletin contains only a general description of the products shown. While uses and performance capabilities are described, under no circumstances shall the products be used by untrained or unqualified individuals and not until the product instructions including any warnings or cautions provided have been thoroughly read and understood. Only they contain the complete and detailed information concerning proper use and care of these products.



ID 0818-02-MC /Oct 2001
© MSA 2001 Printed in U.S.A.

Corporate Headquarters
P.O. Box 426, Pittsburgh, PA 15230 USA
Phone 412-967-3000
www.MSAnet.com

U.S. Customer Service Center
Phone 1-800-MSA-2222
Fax 1-800-967-0398

MSA Canada
Phone 800-267-0672
Fax 905-238-4151

MSA Mexico
Phone 01-800-71-754-11
Fax 01-5-359-4330

MSA International
Phone 412-967-3354
FAX 412-967-3451

Offices and representatives worldwide
For further information:

