

Mini 7mm USB Flexible Inspection Camera Borescope Endoscope

Model: Flex-Camera-7

Flex-Camera-7-3.3ft

Flex-Camera-7-9.8ft

User's Manual



Technical Details

- Image Resolution: 640 x 480 pixels
 - Formats: JPEG
- Video Resolution: 640 x 480 pixels
 - Format: WMV
 - Frame Rate: up to 30FPS @ VGA
- Focal Distance: around 5cm, fixed focus
- Magnification: up to 10x
- Waterproof camera head & cable (handle is NOT waterproof) meet IP66 standard
- Photo Taken: by the software. Mirror Attachment included in the package
- Illumination: 4 white LED lights with adjustable brightness
- USB Cable: 82cm (2.7ft) long with USB 2.0 interface
- Measurement Functions: Measure Length, Arc, Angle

Product Details

- Dimension: Flexible cable with handle: 90cm (2.9ft), 110cm (3.6ft), or 310cm (10.2ft); Flexible cable: 80cm (2.6ft), 100cm (3.3ft), or 300cm (9.8ft); Flexible cable diameter: 6mm (0.24in); Camera head outer diameter: 7mm (0.28in)
- Weight: 186g (6.3oz)for Model Flex-Camera-7
- Compatibility: Windows 7/Vista/XP, MAC 10.5 or above, Linux (note: For Mac, please use Photo Booth or Facetime to open it. No software for Mac at this time).
- Package Includes: Mini USB Inspection Camera, CD Software (with User's Manual and software)
- Manufacturer's Warranty: 1 year

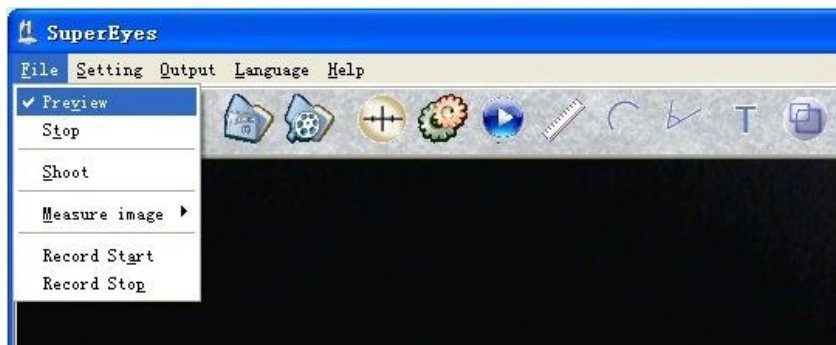
Software:

1. Installation

To install the Supereyes software, simply copy and paste the 'supereyes software' folder into your desired directory. To open the software, find the 'supereyes software' folder and double click the 'supereyes.exe'

2. Starting Device

Plug the endoscope into the USB port. Double click on the icon of 'supereyes.exe'. Click 'preview' to view objects under examination.



3. Languages

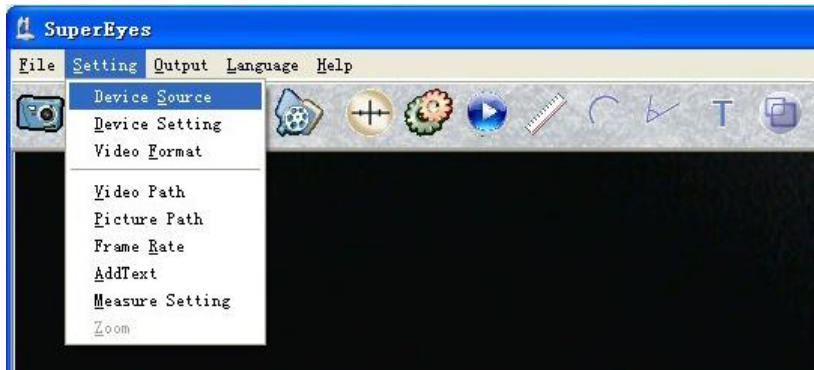
Three languages are available: English, Chinese and Japanese.



4. Basic Setting

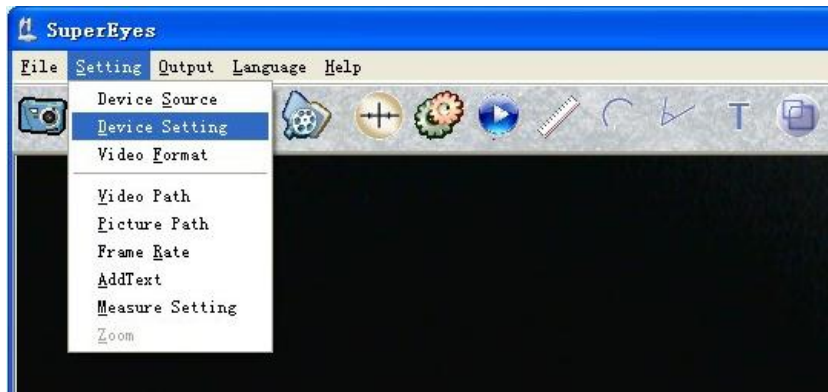
1) Device source

Click 'Device Source', choose the device you need.



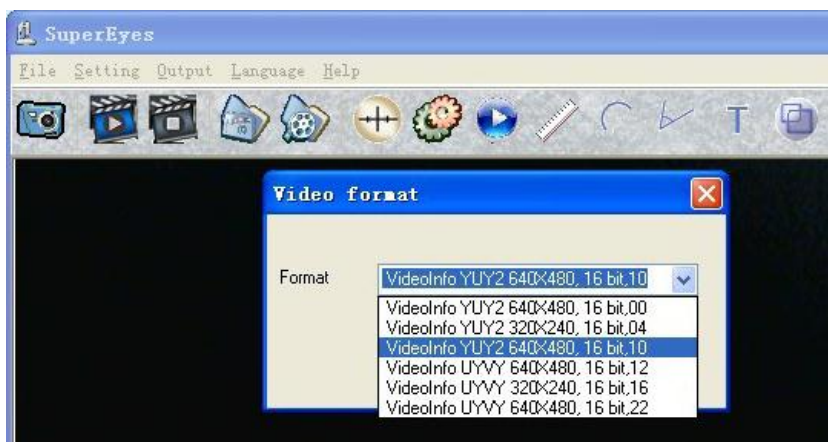
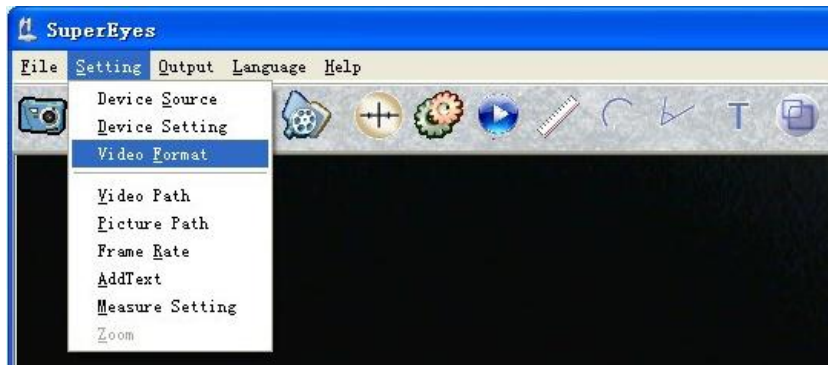
2) Device Setting

You can change the Device Setting based on your need.



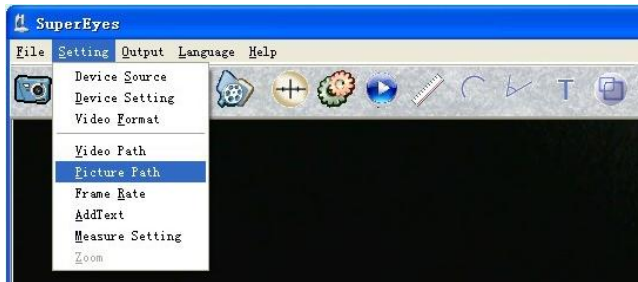
3) Video Format Setting

Set Video format for video resolution

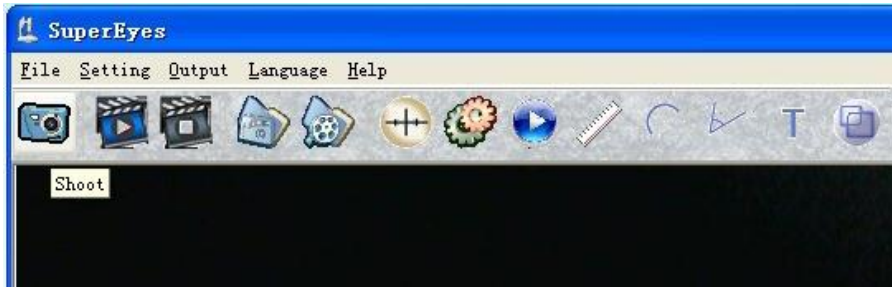


5. Picture Capture

1) Setting Picture Path



2) Shoot



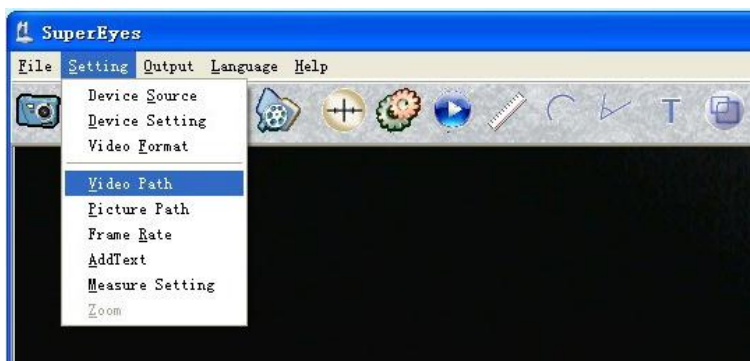
3) Preview the stored picture

- After the photo has been taken and saved, you can open it through
 - A. Open the Image Folder
 - B. Double click the picture in the 'type Picture'

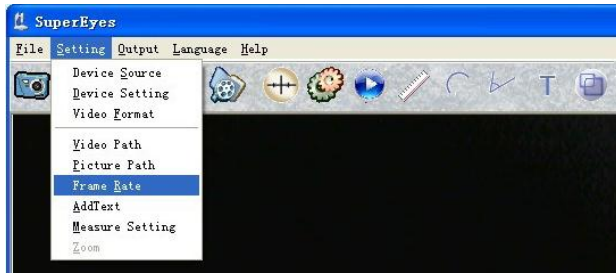


6. Video Recording

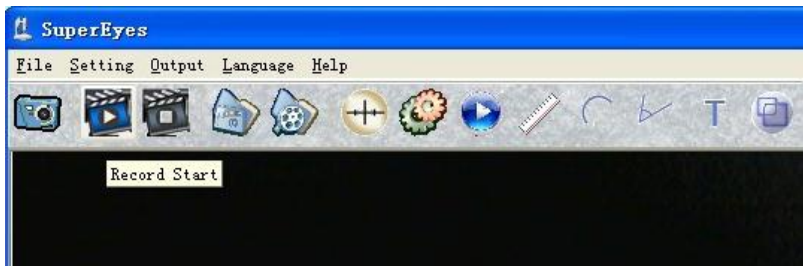
1) Setting the video path



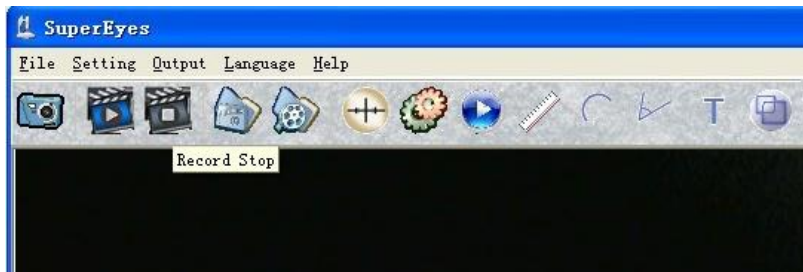
2) Setting Frame Rate



3) Video Recording

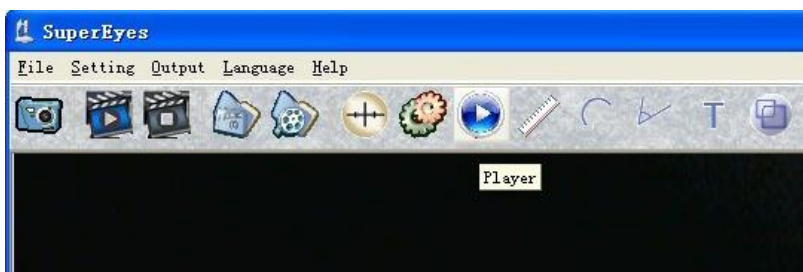


4) Stop



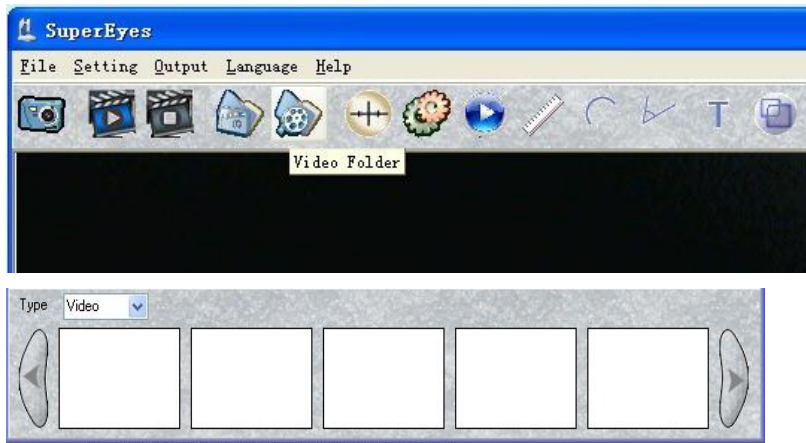
5) Play Video

A. click player to play (only for DZC file)



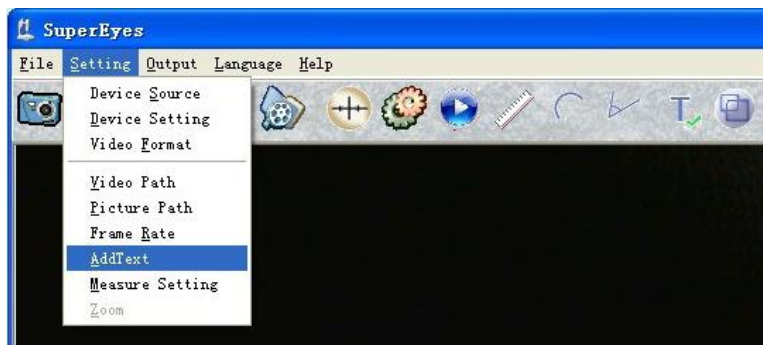
B. open video files by Video Folder

C. double click video on the 'Type video'



7. Add Text

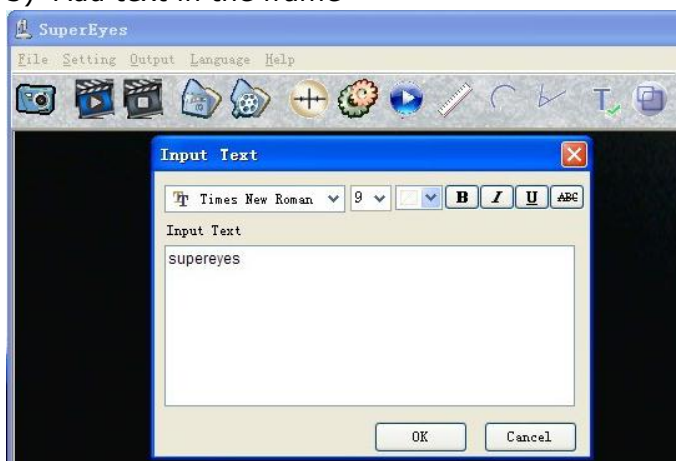
1) Click the device of 'Add Text'



2) Click the button of the 'Add Text'



3) Add text in the frame



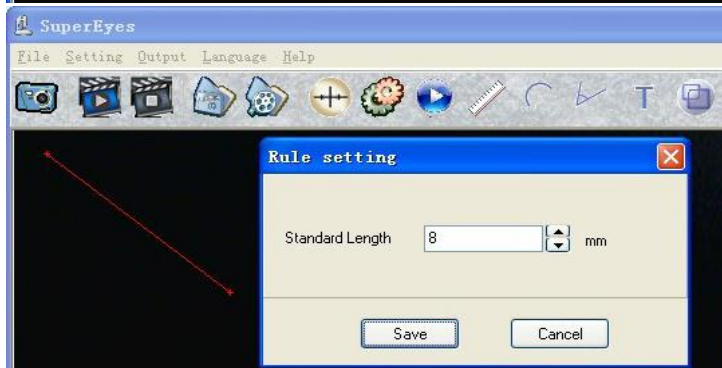
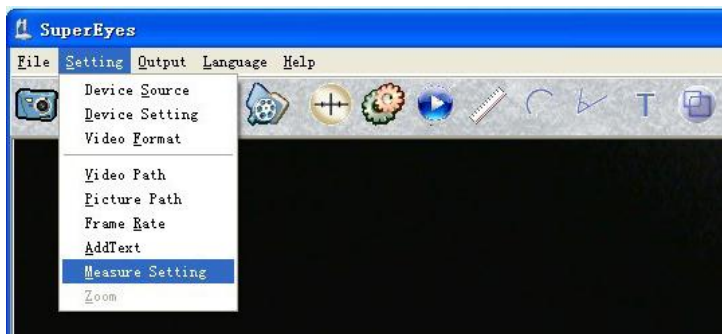
4) Display the text in the screen



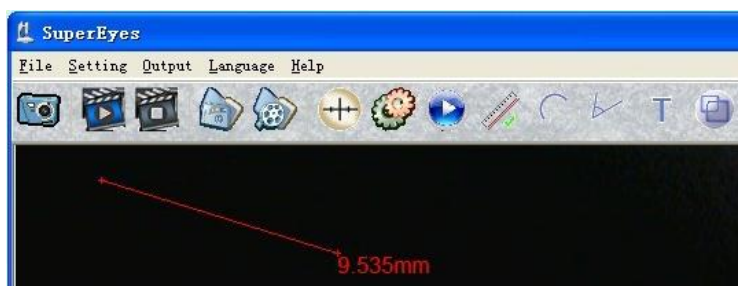
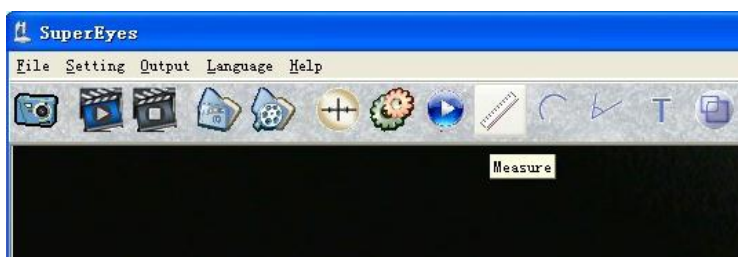
8. Measurement

1) Setting the Measuring Standard

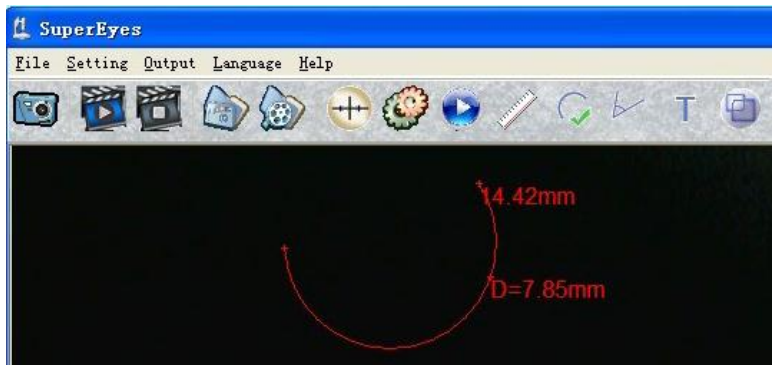
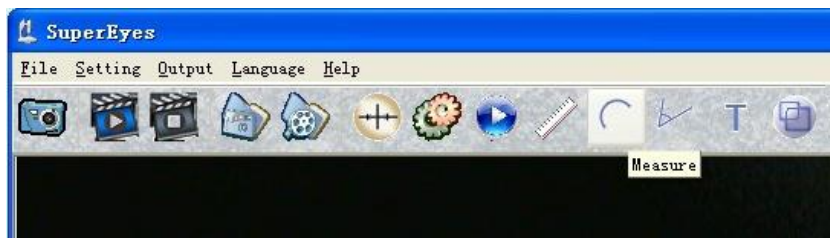
Put a precision ruler under the lens of endoscope, pull a line about one millimeter, and write down the number



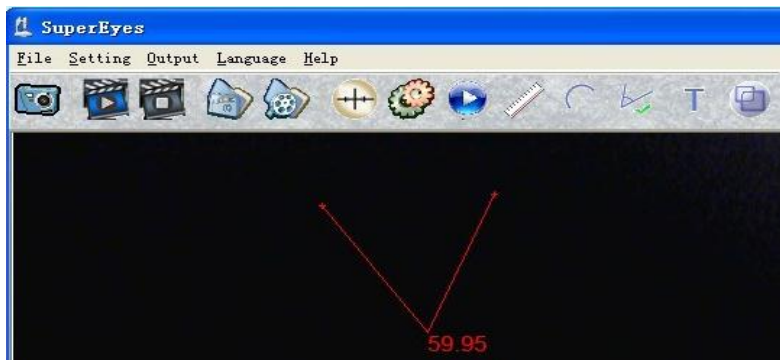
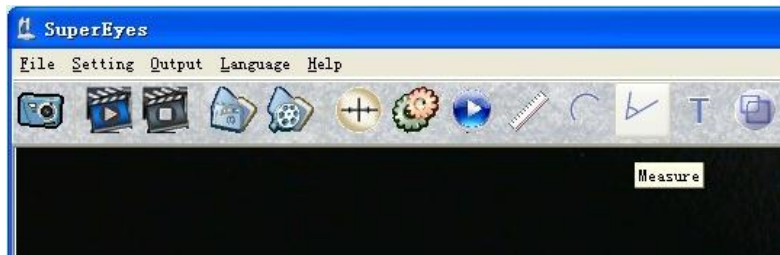
2) Measure the length



3) Measure the arc length

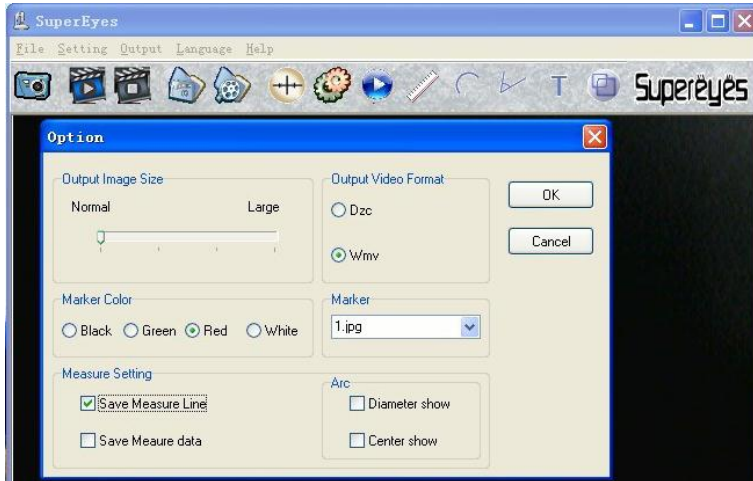
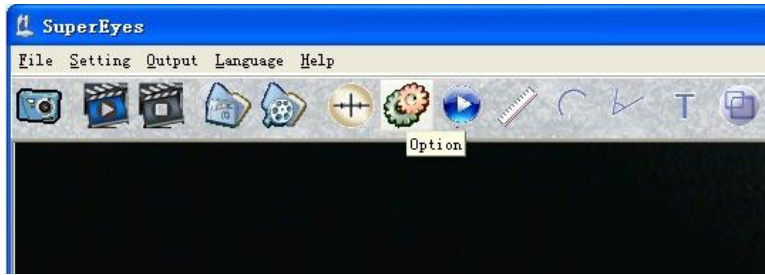


4) Measure the angle

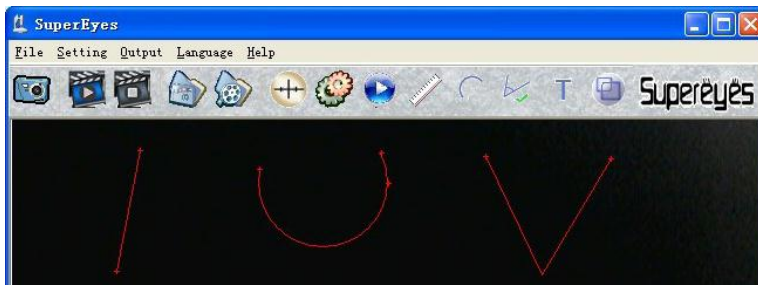
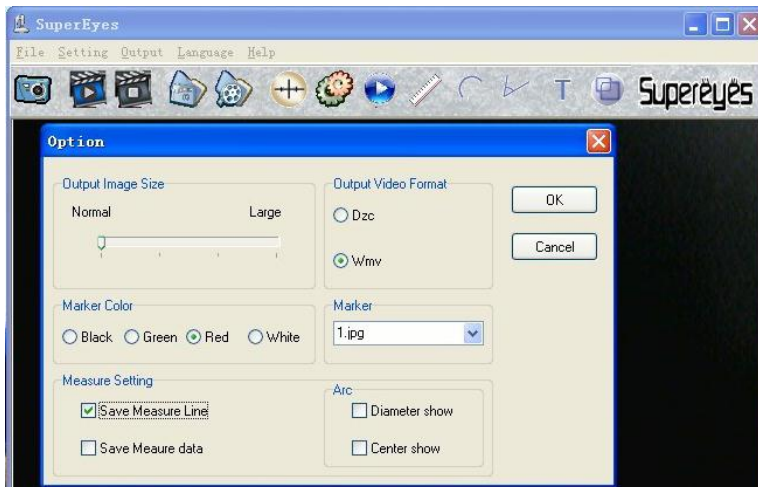


9. Option Set Up

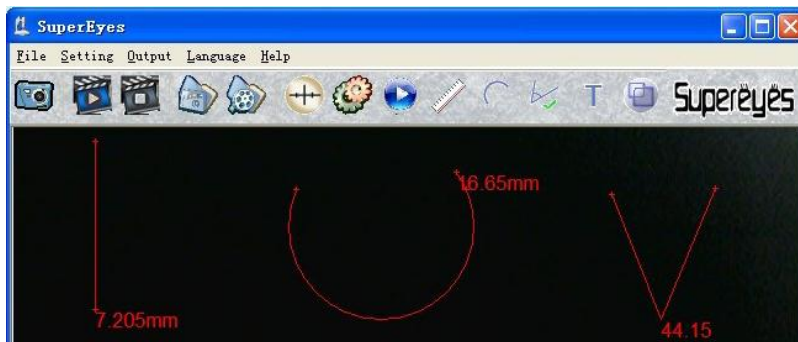
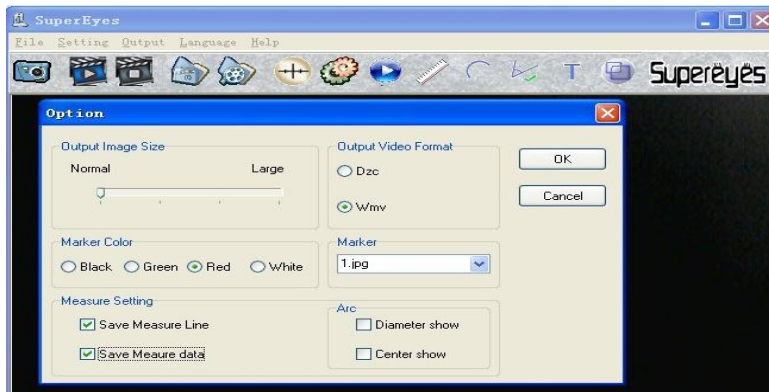
- 1) select video record format
WMV (general format) or DZC (professional high compression ratio format)
- 2) Select photo size
- 3) Select color of the ruler
- 4) Select the measure setting



The drawing can be saved by selecting the 'Save Measure Line'.

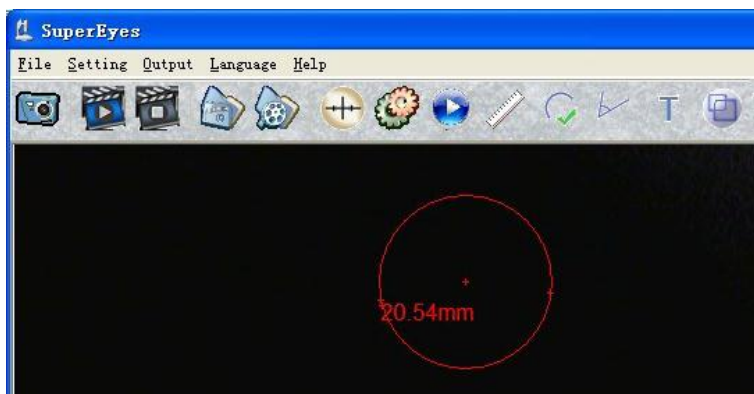
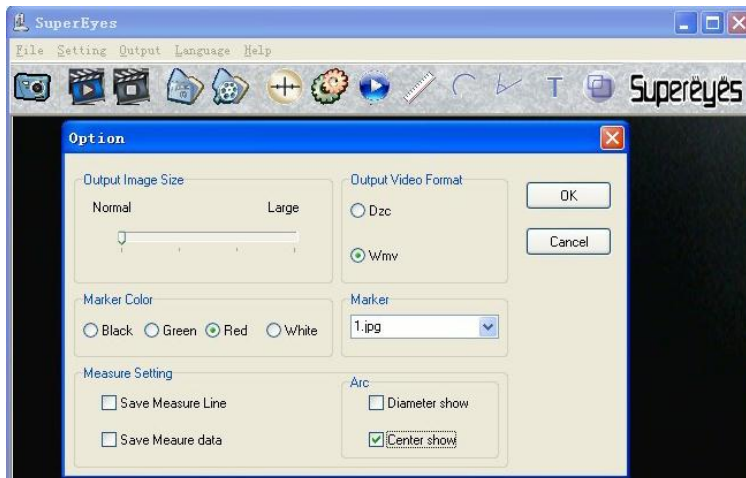


The data of measurement can be saved by selecting the 'Save Measure data'.

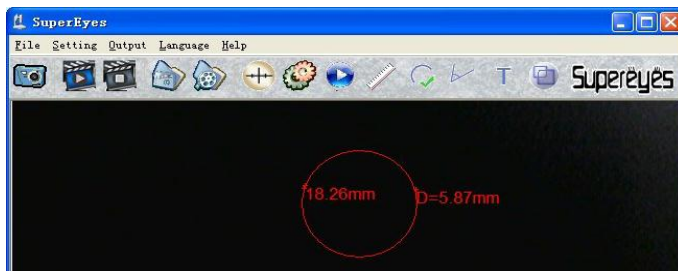
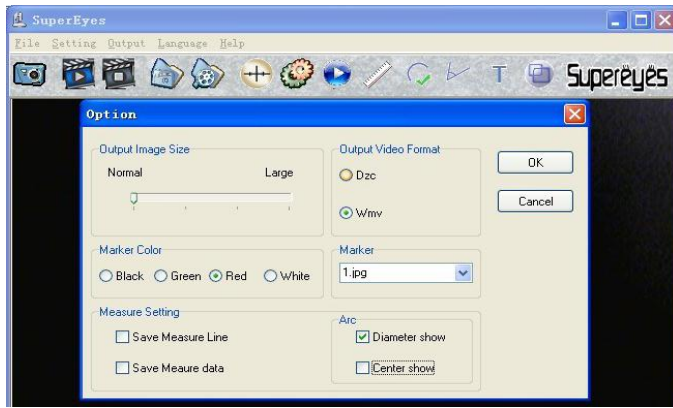


5) Select the Arc setting

Selecting the 'Center show' allows you to see the central point.

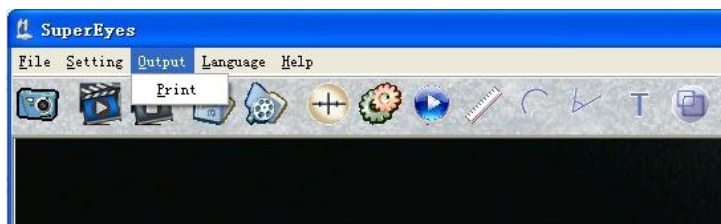


Selecting the "Diameter show" allows you to see the diameter data of the arc.



10. Output

Print the photos



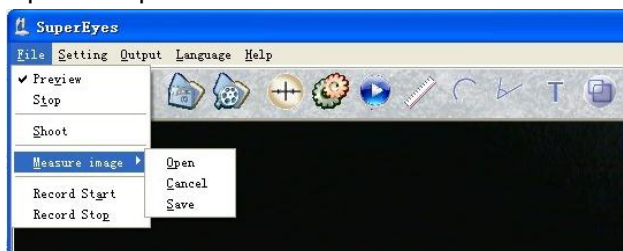
11. Marker

Click the button 'Marker' to play or cancel the marker.



12. Measure the Picture

Open the picture that will be measured



Complete the measurement. Click the right key mouse to select 'save' or 'cancel'.

13. Use of Mirror Attachment

- 1) Unscrew Protection Ring from camera.
- 2) Screw in Mirror Attachment for side view (**please screw in the mirror attachment gently and smoothly, otherwise it might get stuck, and hard to remove**).

