



Committing to the future

The precise thermal imager
with outstanding features



testo 885



The advantages of testo 885



Detector size 320 x 240 pixels

With 76.800 temperature measurement points, the measurement objects are detected in excellent image quality, very clearly and precisely.



SuperResolution technology (to 640 x 480 pixels)

SuperResolution technology improves the image quality by one class, i.e. the resolution of the thermal images is four times higher.



Thermal sensitivity < 30 mK

Thanks to an excellent temperature resolution of < 30 mK, even the smallest temperature differences are visible.



Large field of view thanks to 30° lens

With the 30° standard lens, large image sections are immediately recognized, and the temperature distribution of the measurement object recorded at a glance.



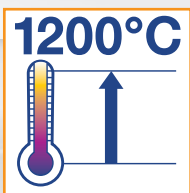
Panorama image assistant

For large measurement objects, the panorama image assistant allows the analysis and documentation of a total image stitched together from many individual images. There is no need to administer, view and compare several images.



SiteRecognition technology

For repetitive thermography of similar measurement objects, the SiteRecognition technology offers the direct recognition, allocation and archiving of the measurement sites, as well as the automatic allocation and archiving of the thermal images.

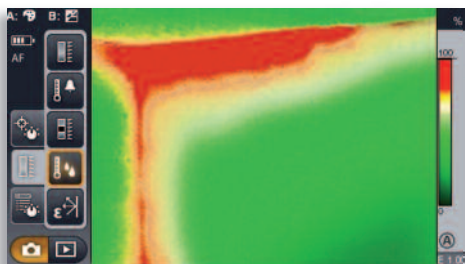


High temperature up to 1200°C

With the high temperature option, the measuring range can be flexibly extended up to 1200 °C.



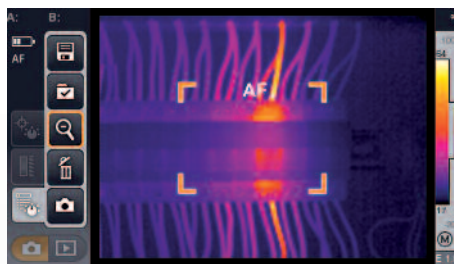
Exchangeable lenses



Special measurement mode for detecting areas with danger of mould



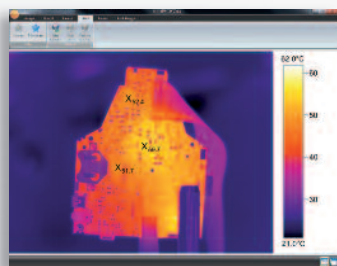
Lens protection glass



Auto focus



Built-in digital camera with power LEDs



USB video measurement with up to 3 measurement points



Voice recording using headset

Function of the PC software: Image overlay TwinPix



Technical data testo 885

	testo 885-1	testo 885-2
Infrared image output		
Detector type	FPA 320 x 240 pixels, a.Si	
Thermal sensitivity (NETD)	< 30 mK bei 30°C	
Field of view/min. focus distance	30° x 23° / 0.1 m (standard lens) 11° x 9° / 0.5 m (telephoto lens)	
Geometric resolution (IFOV)	1.7 mrad (standard lens), 0.6 mrad (telephoto lens)	
SuperResolution (pixel / IFOV) - optional	640 x 480 pixels / 1.06 mrad (standard lens), 0.38 mrad (telephoto lens)	
Image refresh rate	33 Hz*	
Focus	auto / manual	
Spectral range	8 to 14 µm	
Image output visual		
Image size / min. focus distance	3.1 MP / 0.5 m	
Image presentation		
Image display	4.3" LCD touchscreen with 480x272 pixels	
Digital zoom	1 to 3 fold	
Display options	IR / real image	
Video output	USB 2.0	
Colour palettes	8 (iron, rainbow, cold-hot, blue-red, grey, inverted grey, sepia, Testo)	
Measurement		
Temperature range	-20°C to 100°C / 0°C to 350°C (switchable)	
High temperature measurement - optional	-	+350°C to +1200°C
Accuracy	±2°C, ±2% of m.v.	
Emissivity / reflected temperature	0.01 to 1 / manual	
Transmission correction (atmosphere)	✓	
Measuring functions		
Display of surface moisture distribution (using manual input)	-	✓
Humidity measurement with radio humidity probe** (automatic measurement value transfer in real time)	-	(✓)
Solar mode	✓	
Analysis functions	up to 3 measurement points, Hot/Cold Spot Recognition, Area measurement (Min/Max & average), Isotherm and alarm values	
Imager equipment		
Digital camera	✓	
Standard lens	30° x 23°	
Exchangeable lens - optional	-	11° x 9°
SiteRecognition (measurement site recognition with image management)	-	✓
Panorama image assistant	✓	
Laser*** (laser classification 635 nm, Class 2)	Laser marker	
Voice recording	-	Bluetooth**** / wired headset
Video measurement (via USB)	up to 3 measurement points	
Image storage		
File format single image	.bmt; export options in .bmp, .jpg, .png, .csv, .xls	
File format video (via USB)	.wmv, .mpeg-1	
Storage device	SD card 2 GB (2.000-3.000 images)	
Power supply		
Battery type	Fast-charging, Li-ion battery can be changed on-site	
Operating time	4.5 hours	
Charging options	in instrument or optionally in charger	
Mains operation	Yes	
Ambient conditions		
Operating temperature range	-15°C to 50°C	
Storage temperature range	-30°C to 60°C	
Air humidity	20% to 80% non-condensing	
Housing protection class (IEC 60529)	IP 54	
Vibration (IEC 60068-2-6)	2G	
Physical specifications		
Weight	1.570g	
Dimensions (L x W x H) in mm	253 x 132 x 111	
Tripod mounting	1/4" - 20UNC	
Housing	ABS	
PC software		
System requirements	Windows XP (Service Pack 3), Windows Vista, Windows 7, interface USB 2.0	
Standards, tests, warranty		
EU Directive	2004 / 108 / EC	
Warranty	2 years	

✓ Standard (✓) optional - not available

* Inside the EU, outside 9 Hz

** Wireless humidity probes only in the EU, Norway, Switzerland, USA, Canada, Colombia, Turkey, Brazil, Chile, Mexico, New Zealand, Indonesia

*** Excepting USA, Japan and China

**** Bluetooth only in the EU, Norway, Switzerland, USA, Canada, Colombia, Turkey, Japan, Russia, Ukraine, India, Australia

Ideal ergonomics and intuitive operation



Ergonomic handle

In order to be able to be used safely and efficiently in all applications, the testo 885 offers sophisticated ergonomics. The fold-out, rotatable display allows images to be recorded above the user's head. The ergonomic rotatable handle additionally allows secure handling in difficult-to-access places (such as at floor level).



Flexible fold-out, rotatable display



Intuitive hybrid operation

With the intuitive hybrid operation, input by touchscreen can be selected in addition to the proven joystick operation. In order to always have a hand free (e.g. for safety reasons), one-hand operation by joystick is recommended. In order to navigate through the menu directly on the display, touchscreen operation is the best choice.



Overview of variants

Features	testo 885-1	testo 885-2	testo 885-2 set
Detector	320 x 240 pixels		
Thermal sensitivity (NETD)	< 30 mK		
Image refresh rate	33 Hz*		
Temperature range	-20 to 350 °C		
SuperResolution	(✓)	(✓)	(✓)
Exchangeable telephoto lens 11° x 9°	-	(✓)	✓
Auto focus	✓	✓	✓
High temperature measurement up to 1.200 °C	-	(✓)	(✓)
SiteRecognition (measurement site recognition with image management)	-	✓	✓
Laser marker**	✓	✓	✓
Display of surface moisture (via manual input)	-	✓	✓
Humidity measurement with wireless humidity probe*** (automatic measurement value transfer in real time)	-	(✓)	(✓)
Voice recording using the headset****	-	✓	✓
Solar mode	✓	✓	✓
Lens protection glass	(✓)	(✓)	✓
Additional battery	(✓)	(✓)	✓
Fast battery charger	(✓)	(✓)	✓

✓ included in delivery (✓) optional - not available

* inside the EU, outside 9 Hz

** excepting USA, China and Japan

*** Wireless humidity probes only in the EU, Norway, Switzerland, USA, Canada, Colombia, Turkey, Brazil, Chile, Mexico, New Zealand, Indonesia

**** Bluetooth only in the EU, Norway, Switzerland, USA, Canada, Colombia, Turkey, Japan, Russia, Ukraine, India, Australia

Ordering data

Thermal imagers testo 885	Order no.	EUR
Thermal imager testo 885-1 in a robust case incl. pro software, SD card, USB cable, carrying strap, lens cleaning cloth, mains unit, and Li ion rechargeable battery	0563 0885 V1	6,500.00
Thermal imager testo 885-2 in a robust case incl. pro software, SD card, USB cable, carrying strap, lens cleaning cloth, mains unit, Li ion rechargeable battery, headset	0563 0885 V2	7,500.00
Thermal imager testo 885-2 set in a robust case incl. pro software, SD card, USB cable, carrying strap, lens cleaning cloth, mains unit, Li ion rechargeable battery, exchangeable lens, lens protection glass, spare battery, fast charger, headset	0563 0885 V3	9,000.00

In addition to the equipment of the testo 885-2, the testo 885-2 set also includes:

- Telephoto lens
- Lens case
- Lens protection glass
- Additional battery
- Fast battery charger



Accessories	Code ¹⁾ (Initial equipment)	Order no. (Retrofit)	EUR
SuperResolution. Four times more measurement values for even more detailed analysis of the thermal images.	S1	0554 7806	295.00
Lens protection glass. Special protective glass for optimum protection of the lens from dust and scratching.	F1	0554 0289	400.00
Additional battery. Additional Lithium ion rech. battery for extending the operating time.	G1	0554 8852	95.00
Fast battery charger. Desktop charging station for two rechargeable batteries for the optimization of the charging time.	H1	0554 8851	195.00
High temperature measurement up to 1.200 °C	I1	²⁾	800.00
Humidity measurement with wireless humidity probe***	E1	²⁾	265.00
Exchangeable telephoto lens 11° x 9°	D1	²⁾	1,900.00
Aluminium tripod. Professional, extremely light and stable aluminium tripod with Quick-Release legs and 3-way tripod head.		0554 8804	220.00
Emissivity adhesive tape. Adhesive tape, e.g. for bare surfaces (roll, L.: 10 m, W.: 25 mm), e=0.95, temperature-resistant to +250 °C		0554 0051	91.00
ISO calibration certificates Calibration points at 0 °C, 25 °C, 50 °C Calibration points at 0 °C, 100 °C, 200 °C Freely selectable calibration points in the range -18 °C to 250 °C		0520 0489 0520 0490 0520 0495	495.00 495.00 on request

¹⁾ When ordering as initial equipment, you receive the accessories directly in the case.
Example: testo 885-1 incl. lens protection glass and SuperResolution:
Order no. 0563 0885 V1 F1 S1

²⁾ Please contact our customer service