

VOXI Controller

MP883 Dual Channel

Quick Start Guide



mPower Electronics Inc.

2910 Scott Blvd. Santa Clara, CA 95054

www.mpowerinc.com

info@mpowerinc.com

PN: M028-4010-000

v1.0

Read Before Operating

The VOXI Controller full User's Guide must be carefully read by all individuals who have the responsibility of using, maintaining, or servicing this product. The product will perform as designed only if it is used, maintained, and serviced in accordance with the manufacturer's instructions.

⚠ Warnings

- The MP883 Controller is NOT certified for use in hazardous gas locations. VOXI gas transmitters in hazardous locations may be connected to it with appropriate cabling.
- Never operate the Controller when the cover is removed.
- Remove the Controller cover only in a non-hazardous area.
- Use only mPower's sensors and accessories. Substitution of components will impair intrinsic safety and void warranty.

Mounting

Using the four mounting feet and attach to any solid surface in a non-hazardous-gas location. The VOXI transmitters may be mounted in hazardous locations with appropriate cabling connecting to the MP883 Controller outside the hazardous area.

User Interface

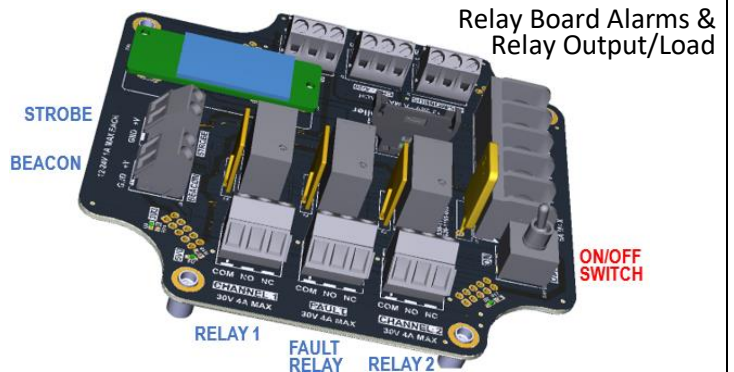
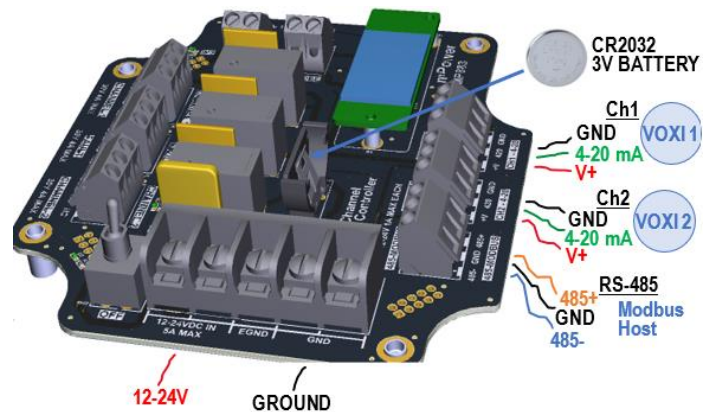
The MP883 is a remote controller, display and alarm for one or two VOXI transmitters. The user interface has an LCD graphic display, LED indications and 4 push-buttons for programming.



2

Wiring Connections

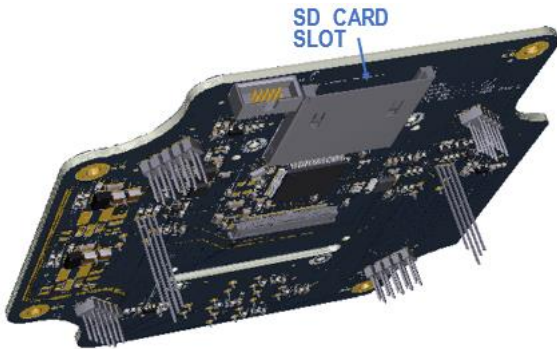
Relay Board 4-20 mA Channels and RS-485 Modbus



3

SD Card

A user-provided 32GB SD card can optionally be used to log events such as power on/off, calibration, alarms, and faults. Insert the card in the slot on the back side of the main circuit board. If no SD card is present, the Channel 2 LED will show solid red during the 60-sec power on warmup period. Data can be downloaded on a PC using mPower Suite.



Battery

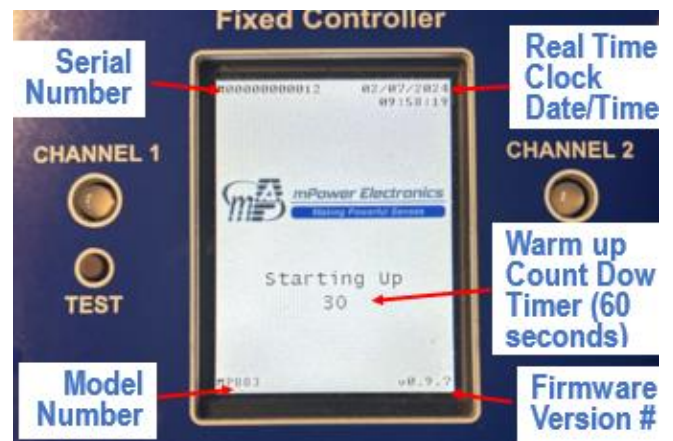
A CR2032 3V button cell battery is used to back up the real time clock in case main power is lost.

Start Up

Once 12-24V power is connected, the MP883 Controller enters a 60-sec warm up while various functions are tested, and parameters displayed.

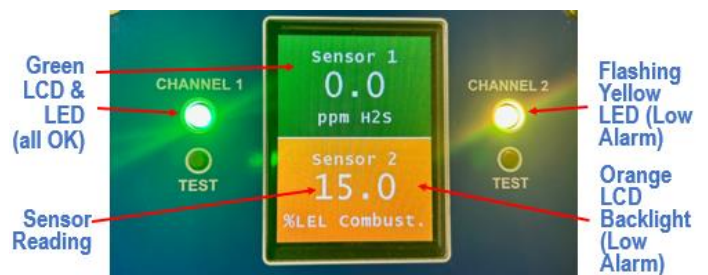
4

Start Up Display



Operating Display

When the startup is complete, the gas concentrations are displayed. If any alarm level is exceeded, the Channel LED flashes and the display backlight changes color.



5

Operating Display (continued)

The operating displays include:

Condition	Panel Backlight	LED
Normal	Green	Green Steady
Low Alarm	Orange	Yellow Flashing
High Alarm	Red	Red Flashing
High High Alarm	Red	Red Flashing
Sensor Warm Up	Light Blue	Blue Steady
Cal in Progress	Light Blue	Blue Steady
No Signal	Dark Blue	Blue Flashing
Sensor Fault	Dark Blue	Blue Flashing

Alarm Test

Press Test for 5 seconds to test alarm/relay functions.

Programming

• Enter Setup Menu

Press and hold the Escape button for 5 seconds and enter the password (if activated). The default is 0000.

• Navigating Menus

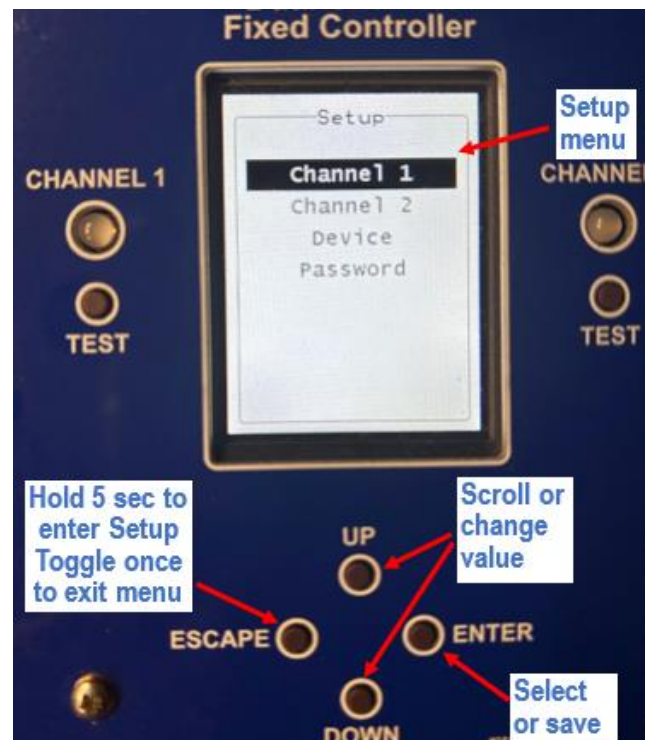
- **Up & Down** keys move the cursor or increase & decrease numbers in editing mode (underline).
- **Enter** enters a sub-menu, enters/exits editing mode, or saves a change.
- **Escape** exits the sub-menu or main menu.

6

Programming (continued)

• Main (Setup) Menu

The Setup Menu has 4 items – Channel 1, Channel 2, Device and Password.



7

Programming (continued)

- **Sub-Menus**

The sub-menus are listed below

Channel 1 or Channel 2	
Configure	Function
Name	Channel name
Gas	Gas name
Measure	Gas unit
Span	Span value
Decimals	# of decimal point displayed
Enabled	Enable/disable channel
Alarm 1, 2 or 3	
Sub-Menu	Function
Enabled	Enable/disable alarm
Set Point	Set trigger value
Low Trip	Trigger above or below
Latching	Latching or no latching alarm
Strobe	Activate strobe light
Horn	Activate horn
Relay1	Activate relay 1
Relay2	Activate relay 2

Programming (continued)

Channel 1 or Channel 2	
Calibration	Function
Reading	Current reading
Gain	Channel gain adjustment
Offset	Channel offset adjustment

Device	
Clock	Function
Date	Change date
Time	Change time

Modbus	Function
Baud	Baud rate

Fault Relay	Function
Fail Safe	Yes or No

Serial Number	Function
Serial Number	View serial number

Password	
Password	Function
Lock	Need protection or not
Password	Change password