

## Dock Manager Software Quick Reference Guide

### Getting Started

Dock Manager interacts with the docking stations either via IR Link or by USB. The software allows the user to retrieve test logs, TOCSIN unit event logs, program configurations, and perform firmware upgrades. Below are detailed instructions for how to use the software.

#### Connecting via IR Link

Open Dock Manager and plug in the IR Link to your computer. Next, power on the docking station. Place the IR Link in front of Unit #1.

Once the IR Link is placed correctly, make sure that the IR button is selected. Click “Read”. A successful connection will result in a green bar in the lower right corner.

#### Connecting via USB

Remove the USB from the docking station (located underneath the metal hatch).

*NOTE: To remove the cover, please use the hex key that was included with the shipment.*

Place the USB into your computer; make sure the USB button is selected. Click “Read”. A successful connection will result in a green bar in the lower right corner.

### Changing Settings

After successful communication has been made with the docking station, additional default settings will be shown. Setting that should not be changed are: Number of Event Logs, Maximum bump time, and gas concentration (Gas Type and Concentration).

### Dock Settings

Customization may be made to the settings listed below.

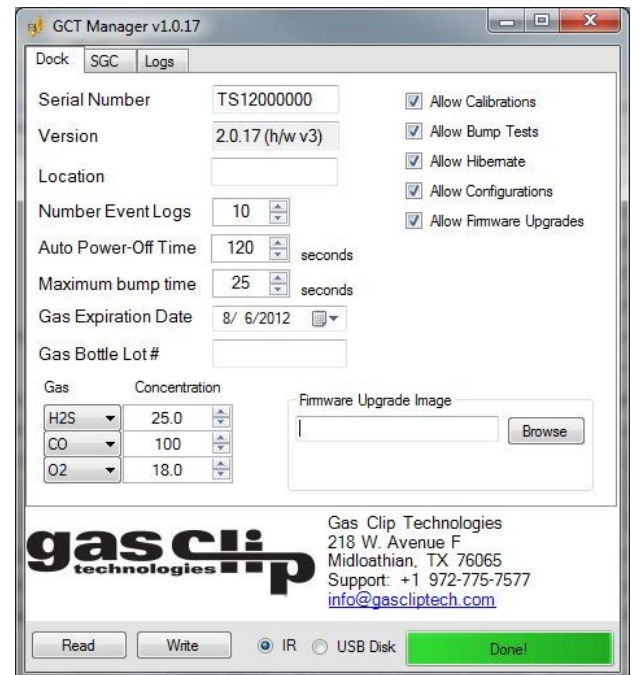
#### Location

This field can be used to assign a unique name to the docking station. This will appear on the test log file. Ex: “Trailer 3 Docking Station”

#### Number Event Logs

By default, the docking station will retain 10 TOCSIN even log outputs; changing this setting will allow for more event logs to be saved.

*NOTE: Changing this field does not impact the number of events that are recorded by the TOCSIN.*



### Auto Power Off Time

After performing a test, the unit will power off after 120 seconds. To change the auto power off time from 120 seconds, adjust this setting to the desired time.

### Gas Bottle Fields

Detailed information can be programmed about the gas bottle. Expiration Date and Bottle Lot # will appear on each test record. If the expiration date is set to today's date, that field will remain blank on the test record.

### Test Check Boxes

These items are located in the upper right corner.

*NOTE: Changing any of these fields may disable key testing functions.*

### Firmware Updates

The docking station allows for firmware upgrades to occur during the lifetime of the unit. These may be product improvements to add features or to enhance monitor performance. Most firmware upgrades are not required unless notified by Otis Instruments.

After the requested changes have been made, click the “Write” button. If the write is successful, a green bar will be displayed at the bottom of the window.

## TOCSIN Settings

TOCSIN configurations can be made for each sensor type. Once this configuration has been programmed to the dock, every TOCSIN detector that is bump tested will take on the new configuration values. In order to make changes to any particular field, please update the value and ensure the box on the left side is checked. Below is a description of the individual fields:

### User IR

Each unit can now have a unique electronic user ID—up to six characters.

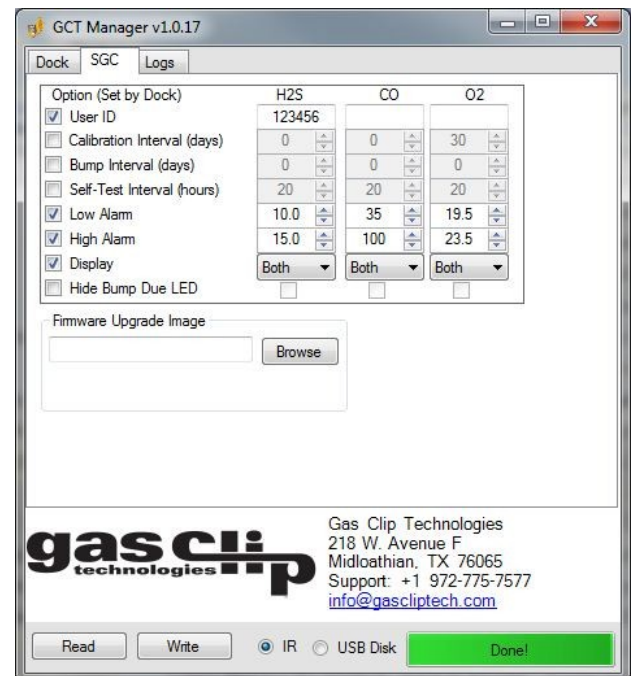
*NOTE: Some alphabetic characters do not display well.*

### Bump Interval

To help ensure bump test accountability, users can adjust the Bump Interval. If a unit has not been bump tested within the time frame, the unit will emit a flash until it has been tested (either manually or via a docking station).

### Self-Test Interval

By default, all TOCSINs have a 20-hour self-test. Frequency can be set between 8-20 hours.





### *Alarm Set Points*

High and Low set points may be adjusted in this setting.

*NOTE: When adjust set points, the alarm limit should not exceed local or site guidelines. Some sites may have different set points than others.*

### **Display**

The default setting for all TOCSIN units is for the display to show the ppm being read.

#### *Sensor (Default Setting)*

This mode will turn the monitor into a real time ppm display monitor, always showing a real time ppm reading. No life remaining is displayed in this setting

#### *Both*

In this setting, the display screen will show the life remaining when no gas is present. When gas is present, the unit will switch to display the sensor reading in real time ppm.

#### *Life*

In this setting, the unit will only display the life remaining on the display. When gas reached alarm levels, the unit will display the respective warning messages. However, the unit will not display the specific concentration.

#### *Hide Bump Due LED Flashing*

If it is preferred to not have the unit flash when due for a bump test, this box should be checked.

**After all requested changes have been made, click the “Write” button.**

### **TOCSIN Settings Firmware Upgrades**

TOCSIN units allow for firmware upgrades to occur during the lifetime of the unit. These may be product improvements to add additional features or to enhance monitor performance. Most firmware upgrades are not required unless notified by Otis Instruments, Inc.

Once new firmware has been programmed to the docking station, units will be upgraded before testing. During the upgrade the LED will remain orange and flash.

*NOTE: Do not move the unit during a firmware upgrade.*

## Logs Tab

Test records, as well as individual detector event logs, can be accessed using the Dock Manager software. Test records contain detailed dates and times for individual bump checks and calibrations. The test record is listed at the top of the page and starts with “TS-SGC\_Serial Number”. Event logs are listed by serial number. The event log retrieved will be up to the last 25 events. Past events can be located by accessing the USB drive. For more information, contact the Otis Instruments Service Department.

### *How to Download the Test File*

Make sure to “Read” the IR or USB Drive. The test file will automatically populate. Click the check box next to the test file and click “Read” again. A screen will prompt the user to choose the location for where the file should be stored. By default, these files are .csv and should be opened using Microsoft Excel.

This will be the default location for both test files and event logs. If you want to change this location, right click next to the “Files” field. From there, select “Set Location Destination”.

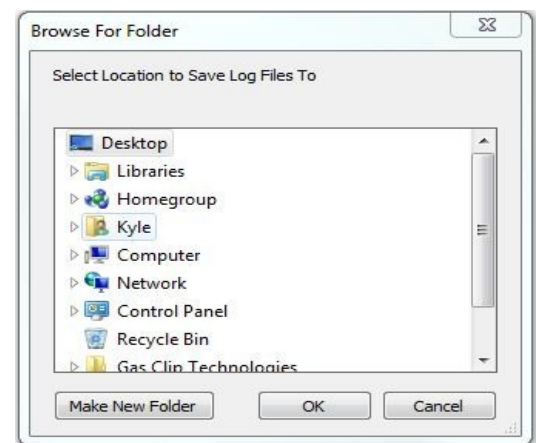
### *How to Download the Event Logs*

“Read” the IR or USB Drive. All available units will be listed by serial numbers. To select the file(s) to be downloaded, click the check box next to the desired unit. Multiple records may be downloaded at the same time. By default, these files are .csv and should be opened using Microsoft Excel.

### *Inventory File*

To allow users to keep track of their units, Dock Manager can generate an inventory file. The inventory file is listed by serial number, unit ID, and gas type. To retrieve the inventory file:

1. Right click next to the “Files” tab.
2. Select “Set Inventory Filename”.
3. When prompted, choose the location where the file should be saved and what the filename should be.
4. Return back to the Dock Manager and click on the box next to TX-SGC\_Serial Number.
5. Click “Read”.
6. Go to the specified location to find the inventory file.





## **Troubleshooting**

Error: No Memory Stick

Solution: Ensure that the USB is inserted properly into the docking station.

*NOTE: When performing a test, the docking station will blink the power light if no USB is inserted.*

Error: No IR Response Received

Solution: Ensure that the docking station is powered on.